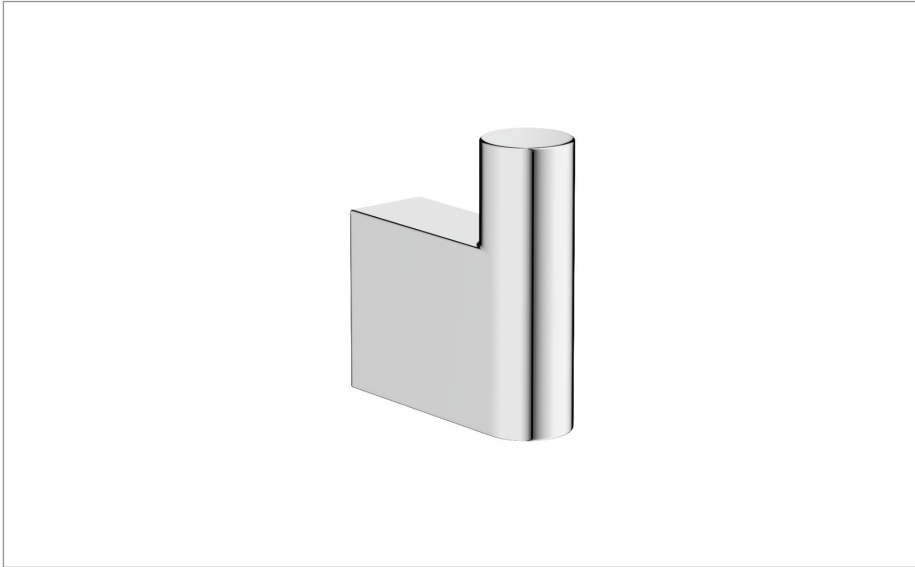


PRODUCT DATA SHEET



PRODUCT CODE

PRO021C_V2

RANGE

MPRO

DESCRIPTION

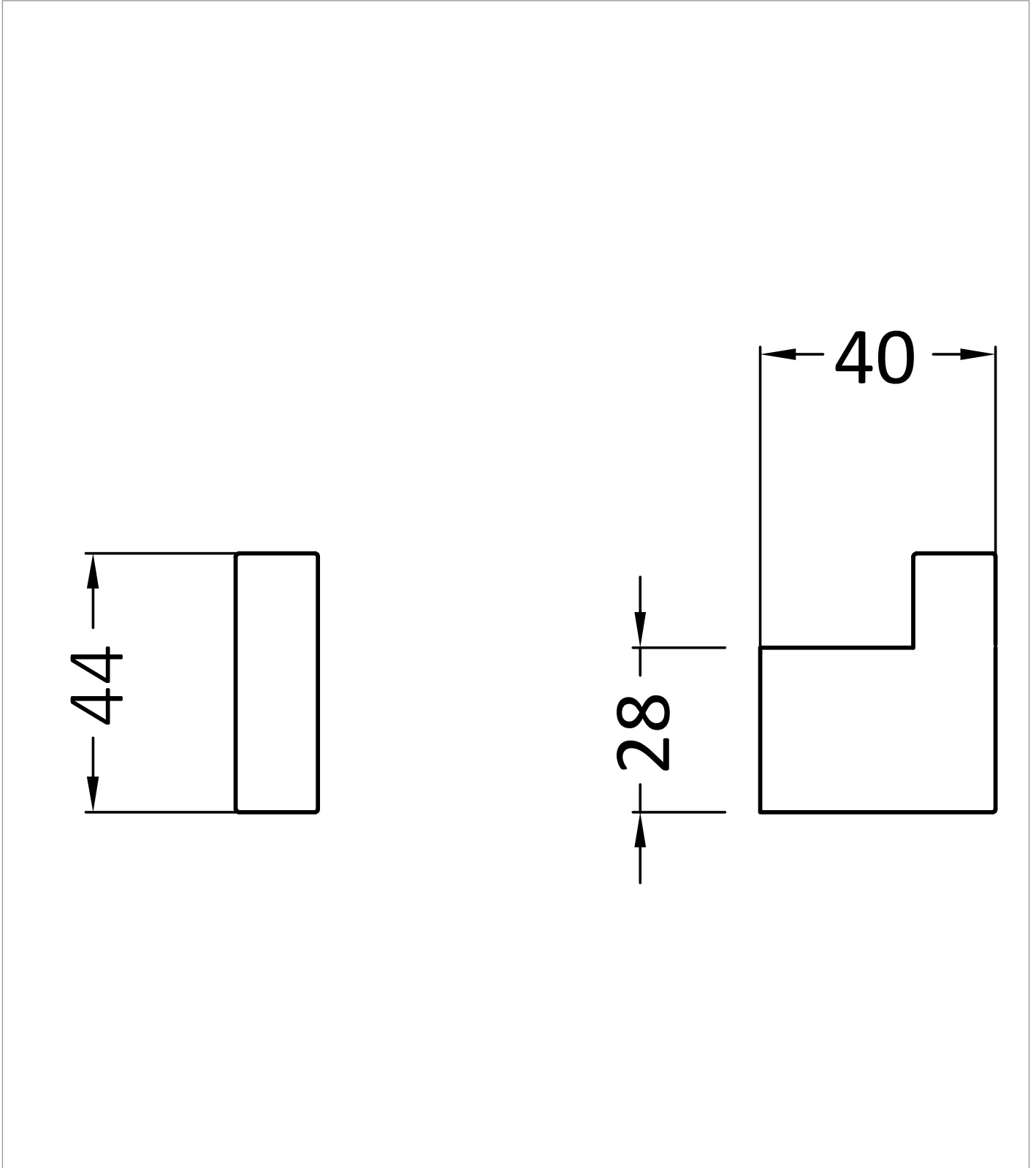
MPRO Single Robe Hook Chrome

CATEGORY	Accessories
WARRANTY DETAILS	15 Years
COLOUR	Chrome
FINISH APPLICATION	Electroplated
PRIMARY MATERIAL	Zinc Alloy
INSTALL TYPE	Wall Mounted
PRODUCT WIDTH MM	40
PRODUCT HEIGHT MM	44
PRODUCT LENGTH MM	13
PRODUCT NET WEIGHT KG	0.1

TECHNICAL DIMENSIONS

Dimensions in mm unless otherwise specified.

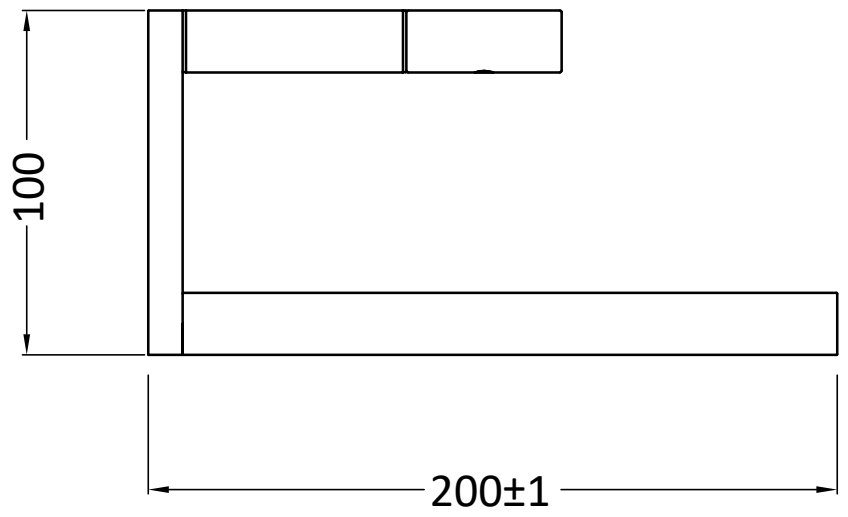
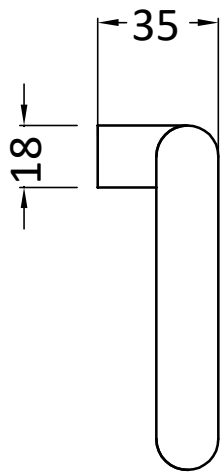
Tolerances (per material type) apply.



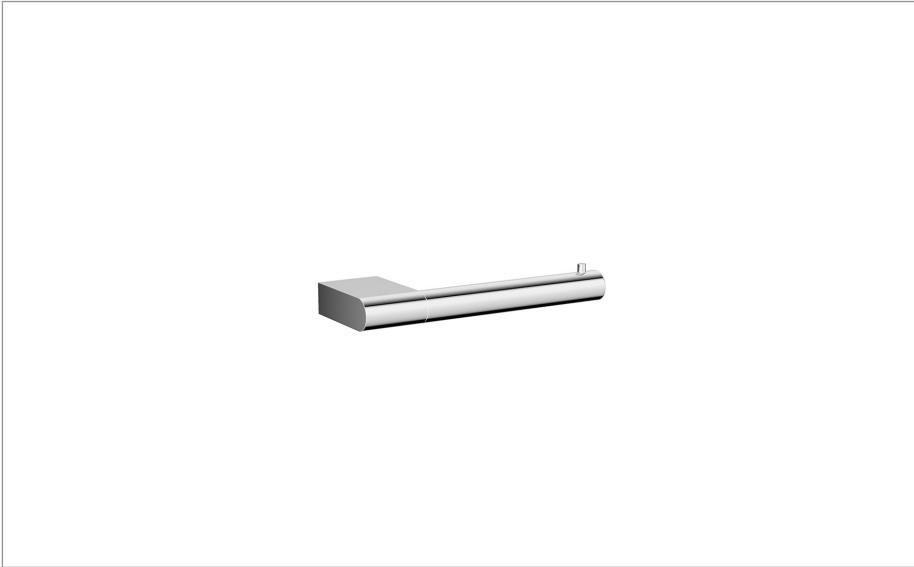
SPARES LIST

Only the parts labelled are available as spares.

NUMBER	PART CODE	DESCRIPTION
1	PRO00003	MPRO Screw Bag for PRO021/PRO047
2	PRO00004	MPRO Wall Mounting Plate for PRO021



PRODUCT DATA SHEET



PRODUCT CODE

PRO029C_V2

RANGE

MPRO

DESCRIPTION

MPRO Toilet Roll Holder Chrome

WEBSITE LINK

[Click Here](#)

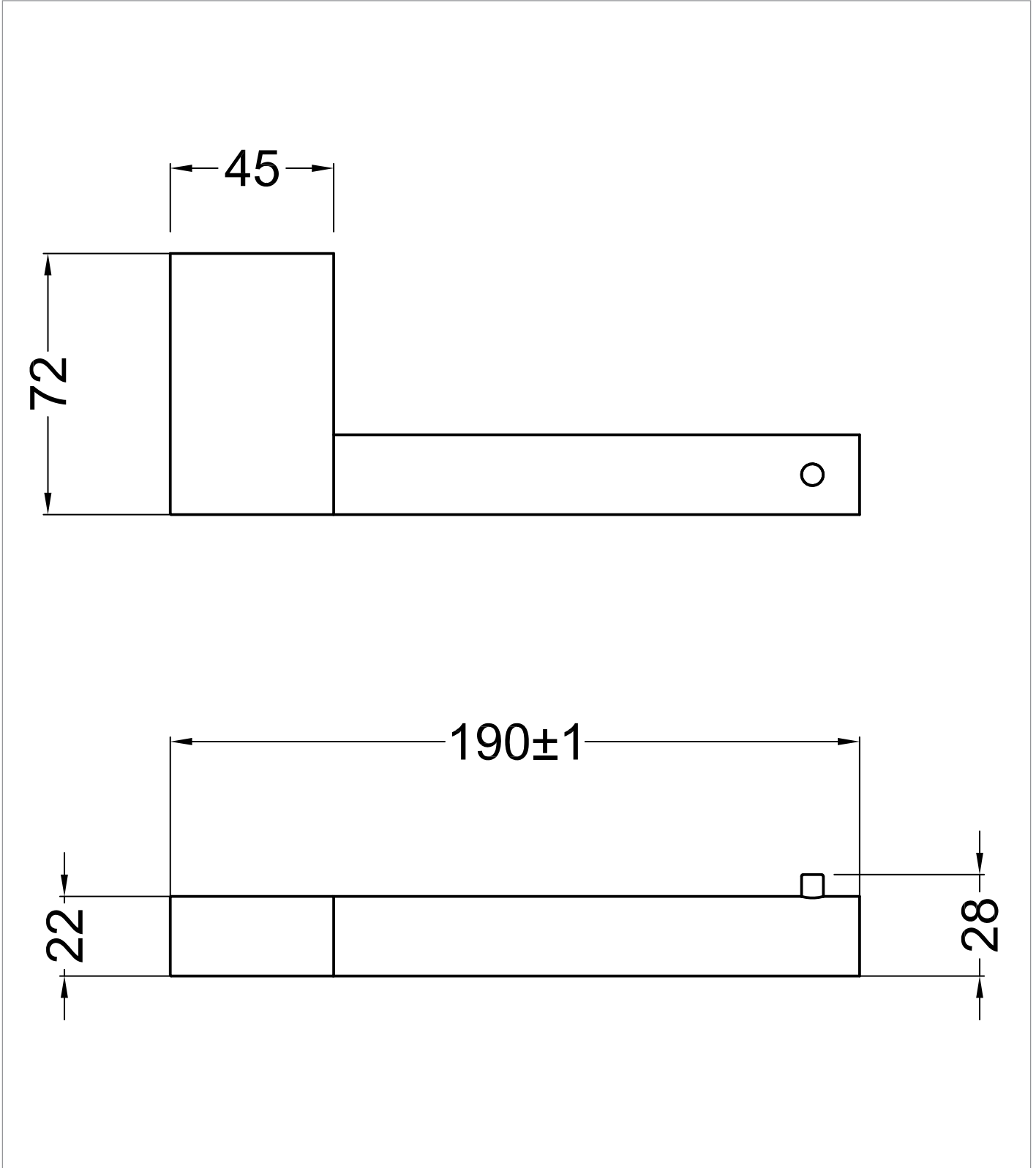
CATEGORY	Accessories
WARRANTY DETAILS	15 Years
COLOUR	Chrome
FINISH APPLICATION	Electroplated
PRIMARY MATERIAL	Brass
INSTALL TYPE	Wall Mounted
PRODUCT WIDTH MM	190
PRODUCT HEIGHT MM	28
PRODUCT LENGTH MM	72
PRODUCT NET WEIGHT KG	0.23

STANDARDS	BS EN 248 : 2002
-----------	------------------

TECHNICAL DIMENSIONS

Dimensions in mm unless otherwise specified.

Tolerances (per material type) apply.



SPARES LIST

Only the parts labelled are available as spares.

NUMBER	PART CODE	DESCRIPTION
1	PRO00001	MPRO Screw Bag for PRO005/PRO003/PRO029/PRO041/PRO013
2	PRO00006	MPRO Wall Mounting Plate for PRO029/PRO043/PRO023/PRO036
3	PRO00012	MPRO Grub Screws for PRO029/PRO041/PRO043/PRO023/PRO036

PRODUCT DATA SHEET



PRODUCT CODE

PRO025C_V2

RANGE

MPRO

DESCRIPTION

MPRO Wall Mounted Toilet Brush Set
Chrome

WEBSITE LINK

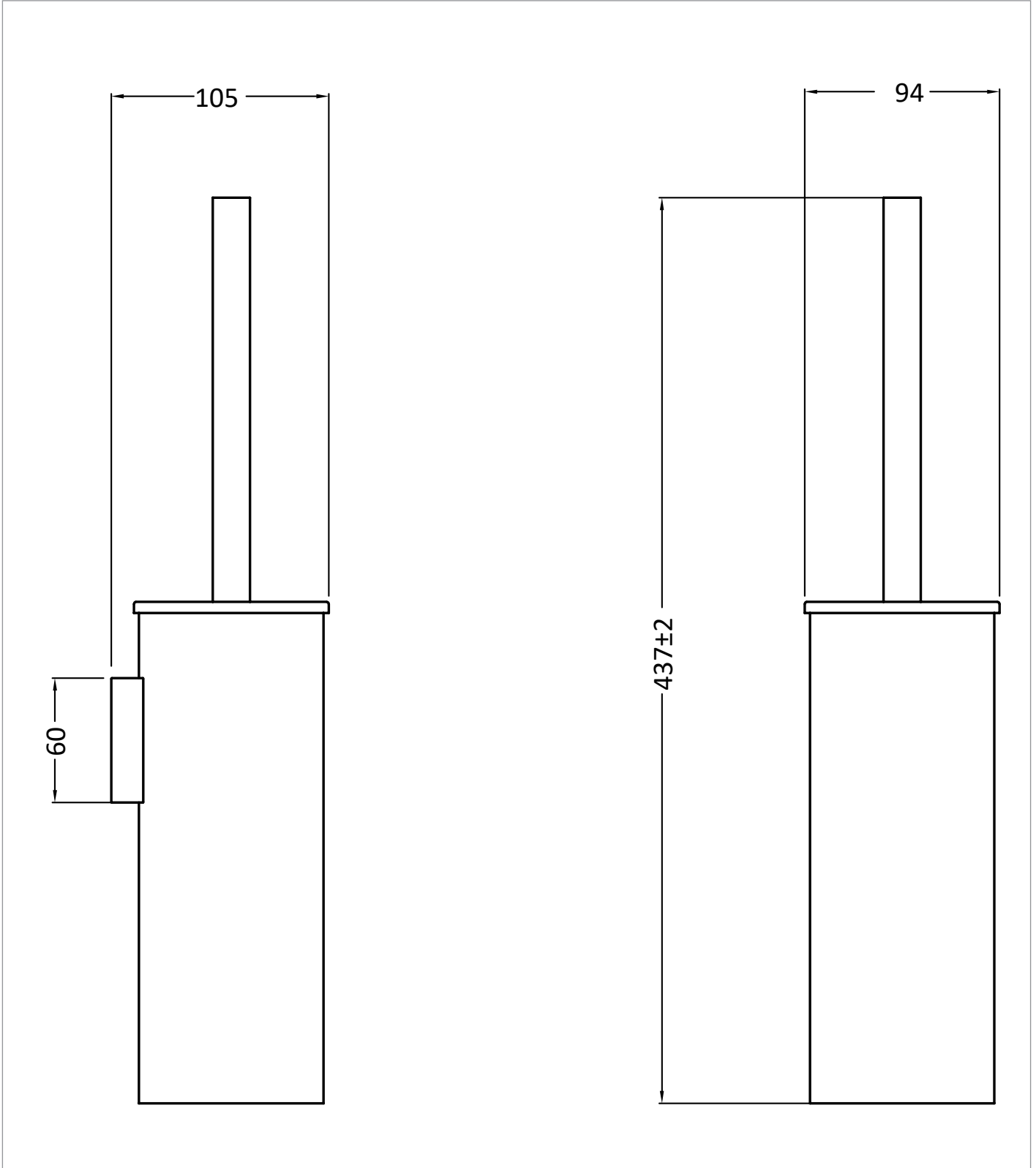
[Click Here](#)

CATEGORY	Accessories
WARRANTY DETAILS	15 Years
COLOUR	Chrome
FINISH APPLICATION	Electroplated
PRIMARY MATERIAL	Brass
SECONDARY MATERIAL	Silicone
INSTALL TYPE	Wall Mounted
PRODUCT WIDTH MM	90
PRODUCT HEIGHT MM	411
PRODUCT LENGTH MM	100
PRODUCT DEPTH MM	105
PRODUCT NET WEIGHT KG	1.02

TECHNICAL DIMENSIONS

Dimensions in mm unless otherwise specified.

Tolerances (per material type) apply.



SPARES LIST

Only the parts labelled are available as spares.

NUMBER	PART CODE	DESCRIPTION
1	PRO025BRUSHC	MPRO Wall Mount Toilet Brush Set Chrome
2	PRO00008	MPRO Wall Mounting Plate for PRO011/PRO025