

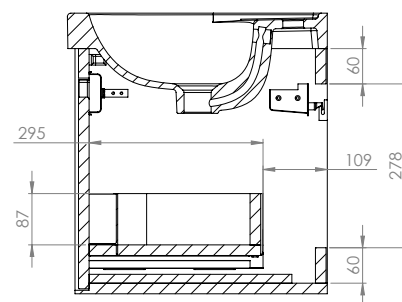
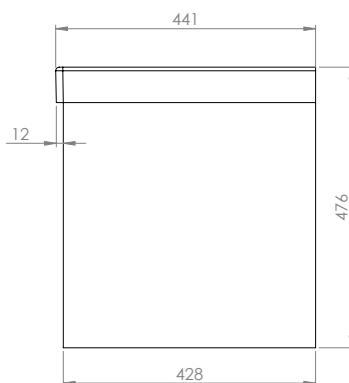
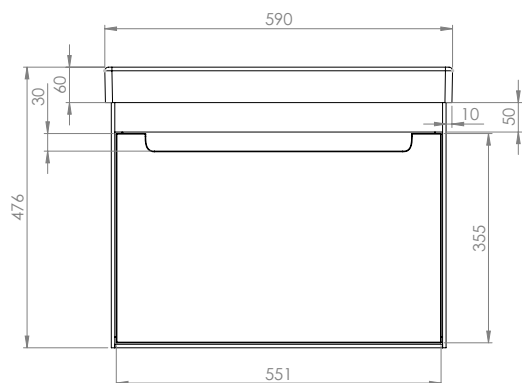
Technical Data Sheet

Acumen 600 WM unit

What's in the box: 1x ACU600W.X + fixings

TAVISTOCK
inspiring bathrooms

Refer to basin TDS for more information.



Diagrams not to scale
All dimensions in mm
Tolerance of +/-5mm

Materials

Carcass: 18mm painted MDF
Fascia components: 18mm painted MDF

**Dimensions are subject to change, customers are advised to measure actual product before commencing installation.
***Fixing point dimensions are for guidance only/the positions of wall fixing must be checked when product is received.

FAQs

- | | |
|--|--|
| Q: How big is the plumbing void? | A: 50mm |
| Q: Are the runners soft close? | A: The runners are both soft close and quick release. |
| Q: How deep is the unit when the drawers are fully open? | A: Approximately 775mm. |
| Q: Can the drawers be adjusted? | A: The drawers can be adjusted as detailed in the supplied instructions. |
| Q: What is the interior finish of the unit? | A: The unit interior is dark grey. |
| Q: Do need to install the aluminium profile trim? | A: Yes, this is available to purchase and install separately. |

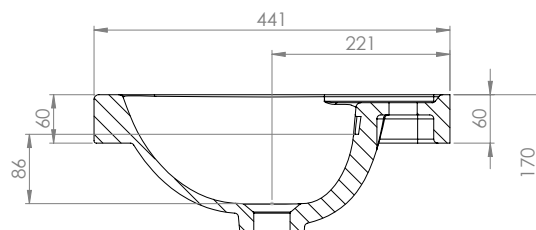
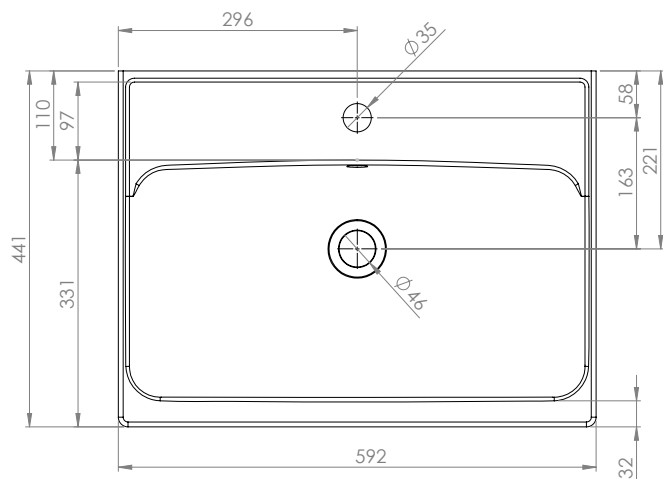
NOTE: Colours unique to Tavistock - No RAL Code available

Technical Data Sheet

ACUMEN 600mm CERAMIC BASIN

What's in the box: 1x DC12061

TAVISTOCK
inspiring bathrooms



Diagrams not to scale
All dimensions in mm
Tolerance of +/-6mm

Materials

Basin: Ceramic

**Dimensions are subject to change, customers are advised to measure actual product before commencing installation.

FAQs

Q: What is the maximum water depth of the basin?

A: 85mm up to the overflow.

Q: What is the width of the Tapledge?

A: The Tapledge is 100mm wide.

Q: What is the distance from the Taphole centre to Basin Waste?

A: 163mm

Q: Can this basin be wall mounted?

A: No, this basin cannot be wall mounted.

Q: Does the basin fit other furniture?

A: No, this basin does not fit any other furniture.

Q: Are overflow cover caps available in other finishes?

A: Yes, matching finishes to our brassware are available to order separately.

Q: What are the taphole/ basin waste sizes?

A: All sizes are to British Standard - (BS EN 31)

- Diameter of the central tap hole = 35mm : +2/ -1mm
- Bore of the waste outlet hole = 46mm : +2 / - 3mm
- Diameter of the base for the seal between the waste outlet hole and the waste fitting = ≥ 60 mm