

# PRODUCT DATA SHEET

Burlington®

PRODUCT CODE  
CQBSILLC0850

RANGE  
Classique

DESCRIPTION  
Classique Hinged Inline Bath Screen  
850 Brushed Nickel



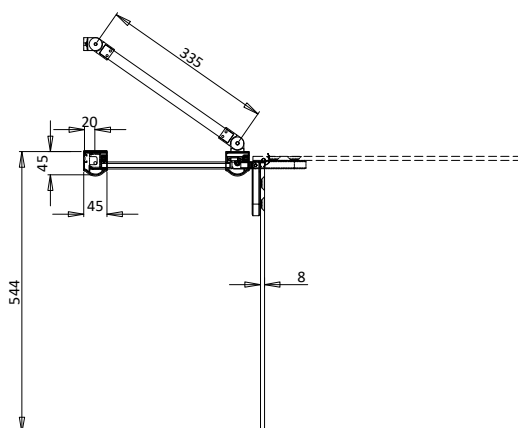
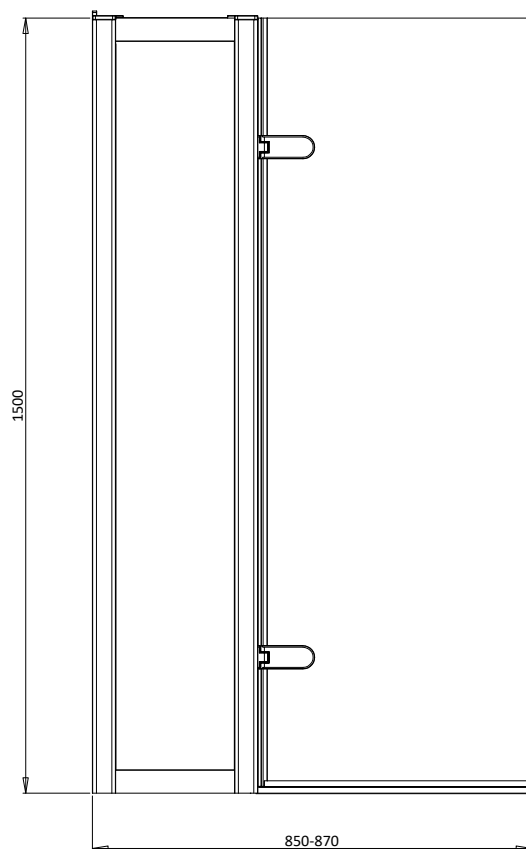
CATEGORY	Showering
WARRANTY DETAILS	Lifetime
COLOUR	Brushed Nickel
FINISH APPLICATION	Anodised
PRIMARY MATERIAL	Glass
SECONDARY MATERIAL	Aluminum
INSTALL TYPE	Wall Mounted
PRODUCT WIDTH MM	850
PRODUCT LENGTH MM	8
PRODUCT DEPTH MM	1500
PRODUCT NET WEIGHT KG	30
STANDARDS	EN14428

HANDING SHOWERING	Universal
GLASS THICKNESS	8mm
EASY CLEAN	Yes
MAGNETIC DOOR STRIPS	No
NUMBER OF DOORS	1
SOFT CLOSING DOORS	No
SAFETY GLASS	Yes
REMOVABLE SEALS	Yes
WET ROOM COMPATIBLE	No
DOOR A INFORMATION	Bath screen
DOOR OPENING	500

## TECHNICAL DIMENSIONS

Dimensions in mm unless otherwise specified.

Tolerances (per material type) apply.



## SPARES LIST

Only the parts labelled are available as spares.

SPARES AVAILABLE UPON REQUEST

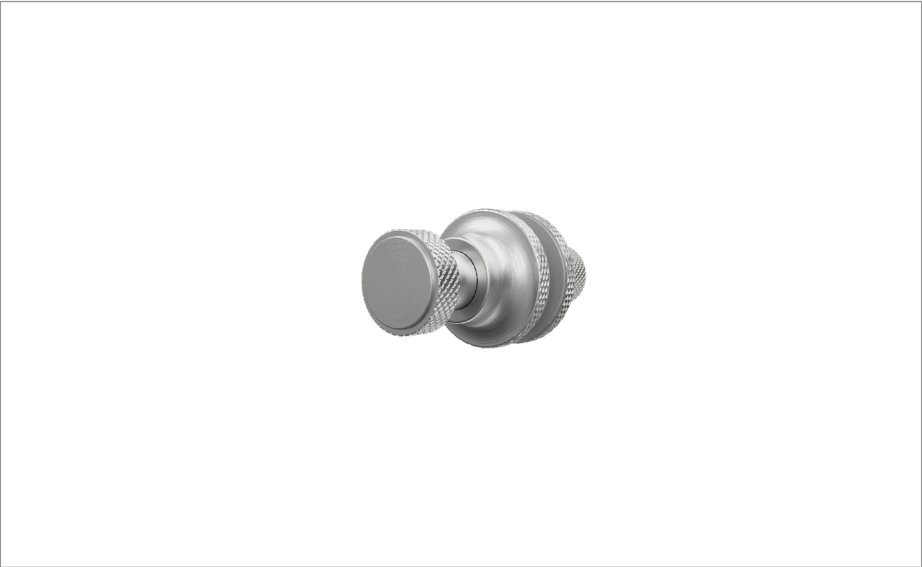
# PRODUCT DATA SHEET



**PRODUCT CODE**  
CQ1909BSHDBPL

**RANGE**  
Classique

**DESCRIPTION**  
Classique 1909 Bath Screen Handle  
Brushed Nickel



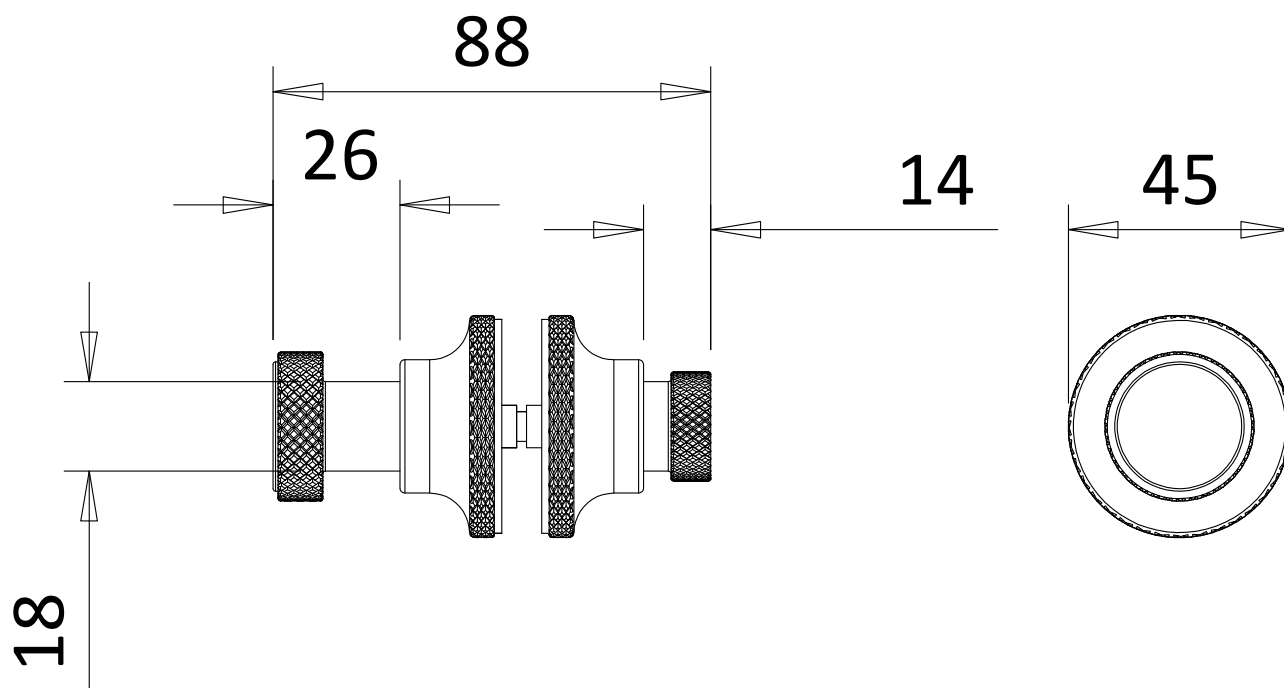
CATEGORY	Showering
WARRANTY DETAILS	2 Years
COLOUR	Brushed Nickel
FINISH APPLICATION	PVD
PRIMARY MATERIAL	304 Stainless Steel
PRODUCT WIDTH MM	45
PRODUCT LENGTH MM	88
PRODUCT DEPTH MM	45
PRODUCT NET WEIGHT KG	0.5

MAGNETIC DOOR STRIPS	No
WET ROOM COMPATIBLE	Yes
DOOR A INFORMATION	Handle

## TECHNICAL DIMENSIONS

Dimensions in mm unless otherwise specified.

Tolerances (per material type) apply.



## SPARES LIST

Only the parts labelled are available as spares.

# PRODUCT DATA SHEET



**PRODUCT CODE**  
CQ1850BSHDBPL

**RANGE**  
Classique

**DESCRIPTION**  
Classique 1850 Bath Screen Handle  
Brushed Nickel



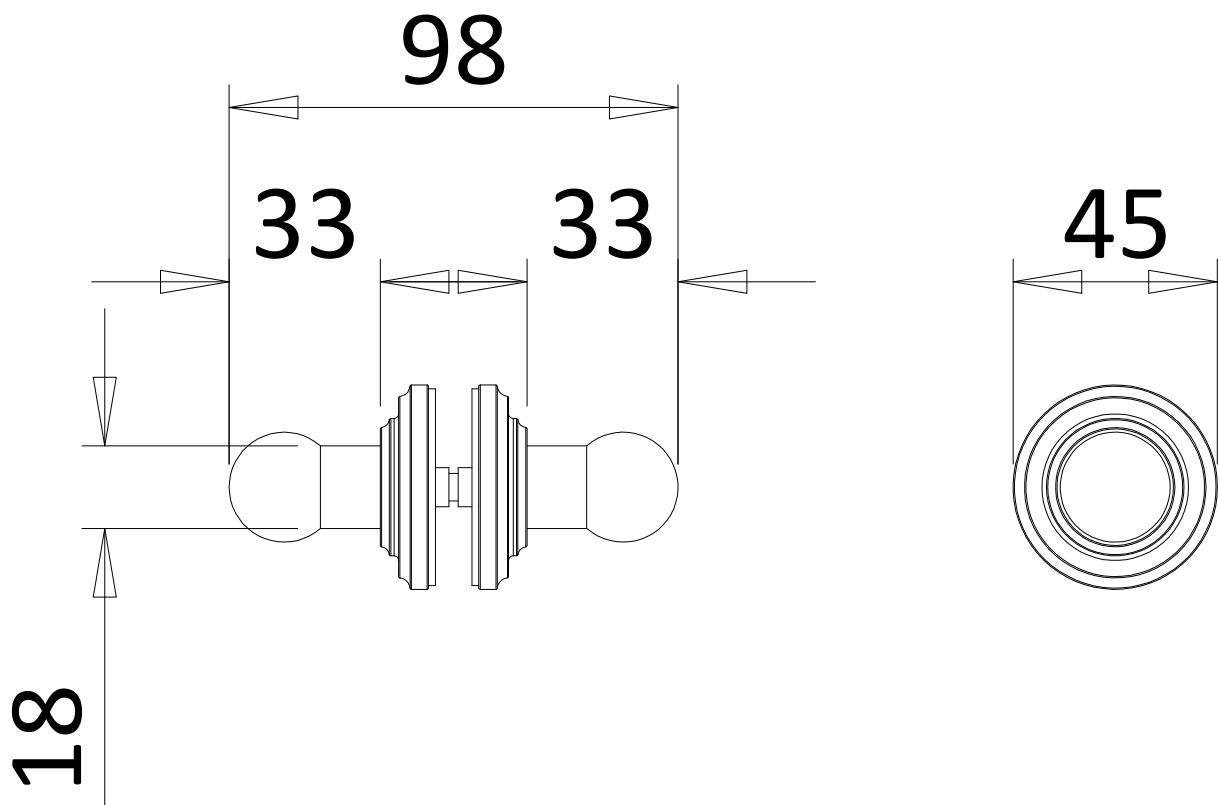
CATEGORY	Showering
WARRANTY DETAILS	2 Years
COLOUR	Brushed Nickel
FINISH APPLICATION	PVD
PRIMARY MATERIAL	304 Stainless Steel
PRODUCT WIDTH MM	45
PRODUCT LENGTH MM	98
PRODUCT DEPTH MM	45
PRODUCT NET WEIGHT KG	0.5

MAGNETIC DOOR STRIPS	No
WET ROOM COMPATIBLE	Yes
DOOR A INFORMATION	Handle

## TECHNICAL DIMENSIONS

Dimensions in mm unless otherwise specified.

Tolerances (per material type) apply.





## SPARES LIST

Only the parts labelled are available as spares.