

Installation Guide

MB2 Fixed panel Bath screen

IMPORTANT

Please read the complete instructions
before commencing fitting.

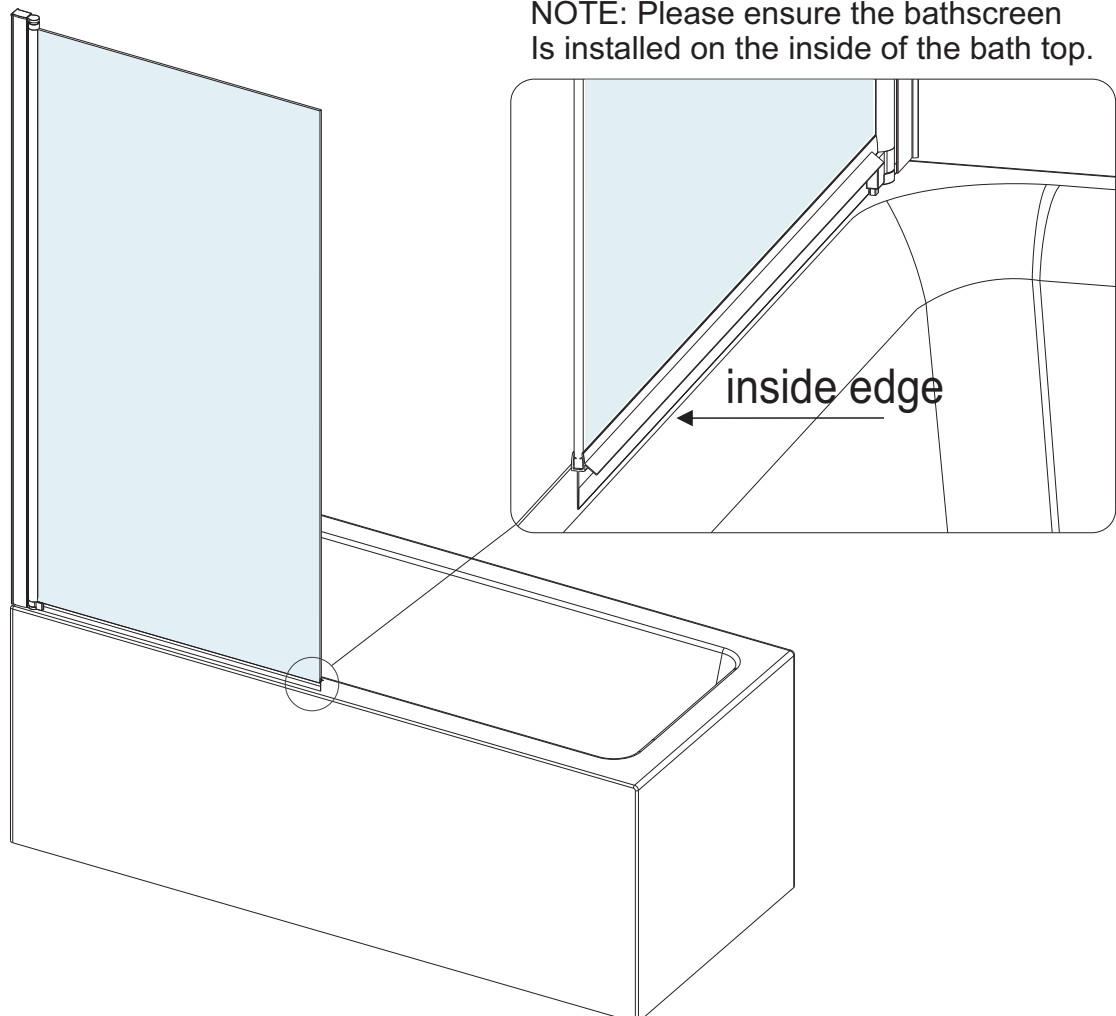
Do Not attempt to install the product unless you can tick all 4 boxes satisfactorily

- | | | | |
|---|--------------------------|--|--------------------------|
| ▪ Check that you have the tools required | <input type="checkbox"/> | ▪ Check all the enclosure components are present | <input type="checkbox"/> |
| ▪ Check the installation site is compatible with the sizes of door supplied | <input type="checkbox"/> | ▪ Check the installation kit is complete | <input type="checkbox"/> |

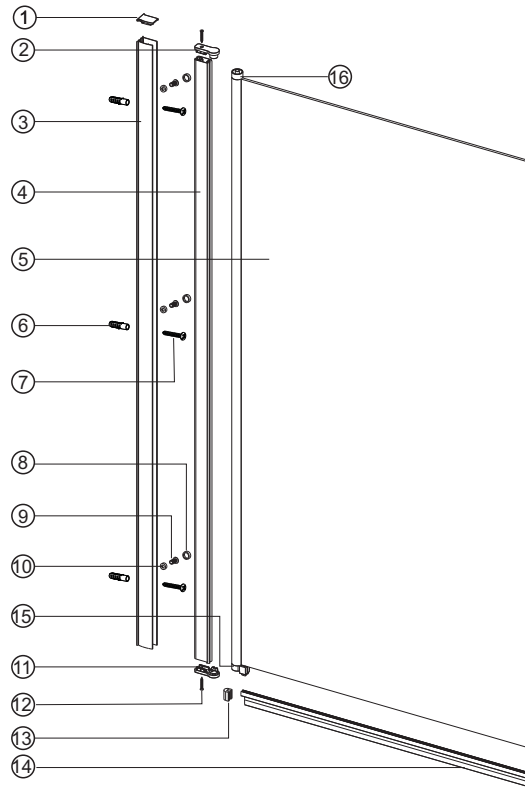
The wall plugs supplied with the installation kit are for use in solid walls. Hollow or 'stud partition' walls will require alternative fixings. Please consult a hardware supplier for the correct type. It may also be necessary to consult your tiling supplier about the correct method for drilling your tiles

**ATTENTION: TAKE EXTREME CARE WHEN HANDLING GLASS.
WEAR PROTECTIVE EYEWEAR AND CLOTHING.
DO NOT LEAVE THE GLASS ON HARD SURFACES AND AVOID
CONTACT BETWEEN THE GLASS EDGES AND HARD SURFACES OR
IMPACTS DURING THE INSTALLATION**

NOTE: Please ensure the bathscreen is installed on the inside of the bath top.

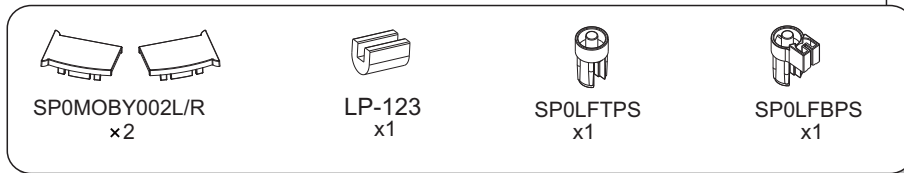
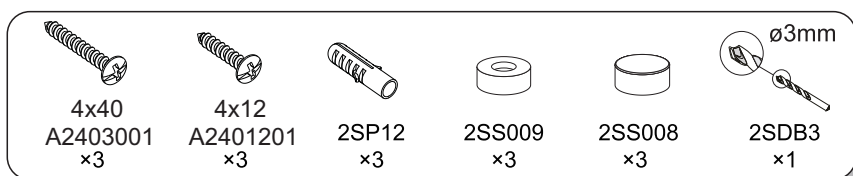


COMPONENTS AND BOX CONTENTS



No.	Description	Qty	Part No.	No.	Description	Qty	Part No.	No.	Description	Qty	Part No.
1	Wall profile cover	2	SP0MOBY002L/R	6	Wall Plug	3	2SP12	11	Bracket bottom Leakfree	1	SP0LF02
2	Bracket top Leakfree	1	SP0LF01	7	Screw(4X40mm)	3	A2403001	12	Screw(3.5X30mm)	2	SP0M7029
3	Wall profile	1	LR8387C	8	Screw Cover Cap	3	2SS008	13	foam plastics	1	LP-123
4	Hinge post	1	S030C	9	Screw(4X12mm)	3	A2401201	14	Clear Seal	1	SP0LFCFS
5	Moving Glass Panel	1	A	10	Screw Cover Cap Clip	3	2SS009	15	Top pivot sleeve	1	SP0LFBPS
								16	Bottom pivot sleeve	1	SP0LFTPS

Fixing Kit components

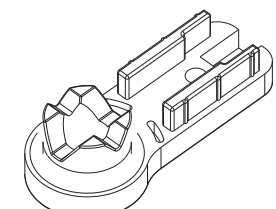
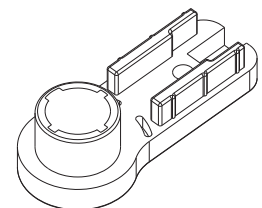


Tools required

- 6mm Masonry drill bit
- Power drill
- Neutral cure anti bacterial silicone
- Pencil
- Tape measure
- PH2 Philips Head screw driver
- Spirit level with horizontal and vertical level indicators

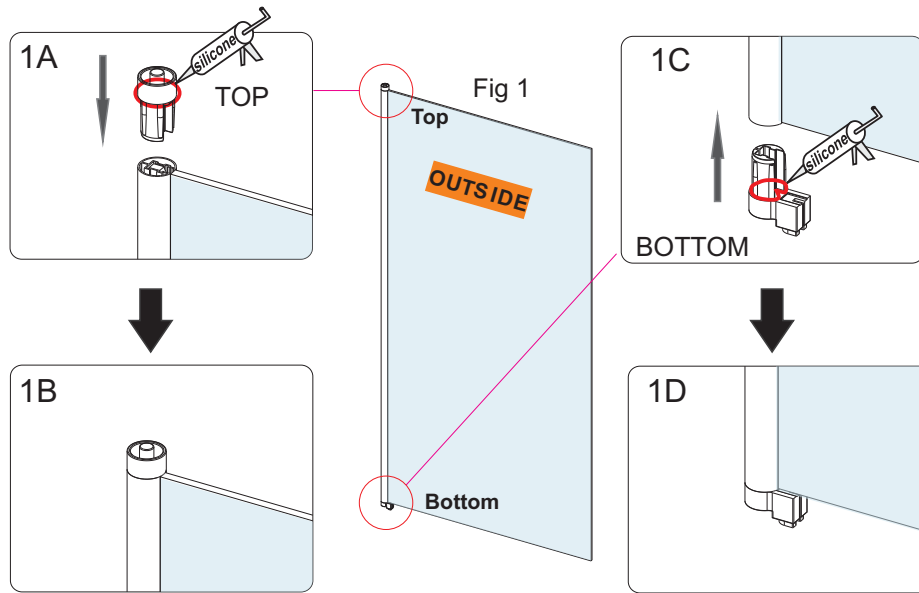
IMPORTANT - Installation Site

1. Ensure your bath is level before fitting. This screen is not designed to fit on baths with stepped fronts, roll top rims or integral soap dishes.
2. The tiling or other wall finishing should be effectively sealed at the bath edges.

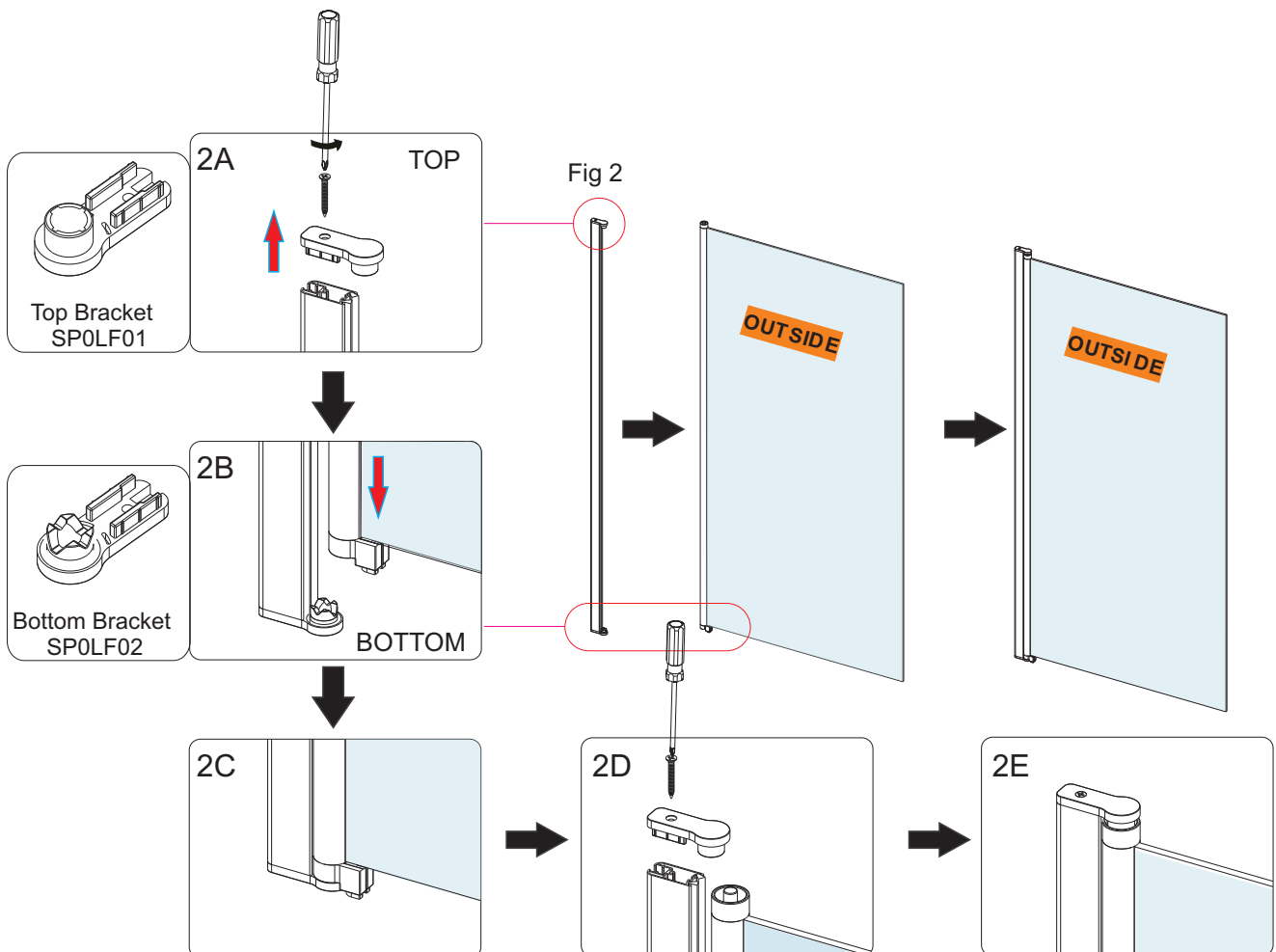


INSTALLATION

1. Bathscreen is reversible, choose which handing is required ensuring that the glass coated side is always on the inside of the bath. Silicone the top pivot bracket and bottom pivot bracket, and then insert into the round profile. Fig 1, 1A-1D.

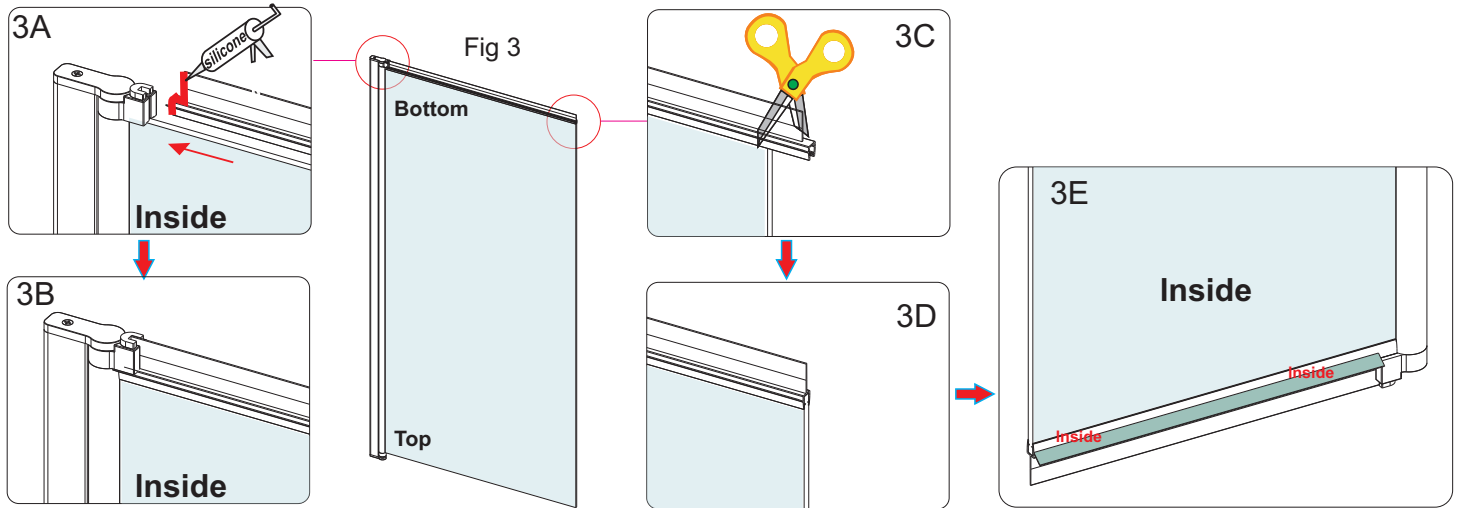


2. Unscrew the top pivot bracket SP0LF01 and insert panel A, reattach the pivot bracket. Fig 2.
Note: Ensure pivot bracket SP0LF02 is always on the bottom of the product



INSTALLATION

- To help fit the bottom seal, turn the screen upside down. Apply silicone as shown in fig 3A. Fit seal SP0LFCS on to the bottom of the bath screen Fig 3 ensuring to push the end of the seal fully into the bottom bracket .



- Position the wall profile **LR8387C** so the seal on the moving panel sits on the inside edge of the bath. **Fig 4**.

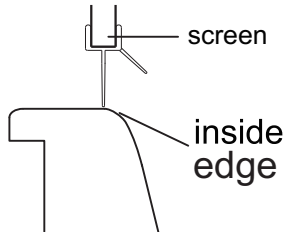
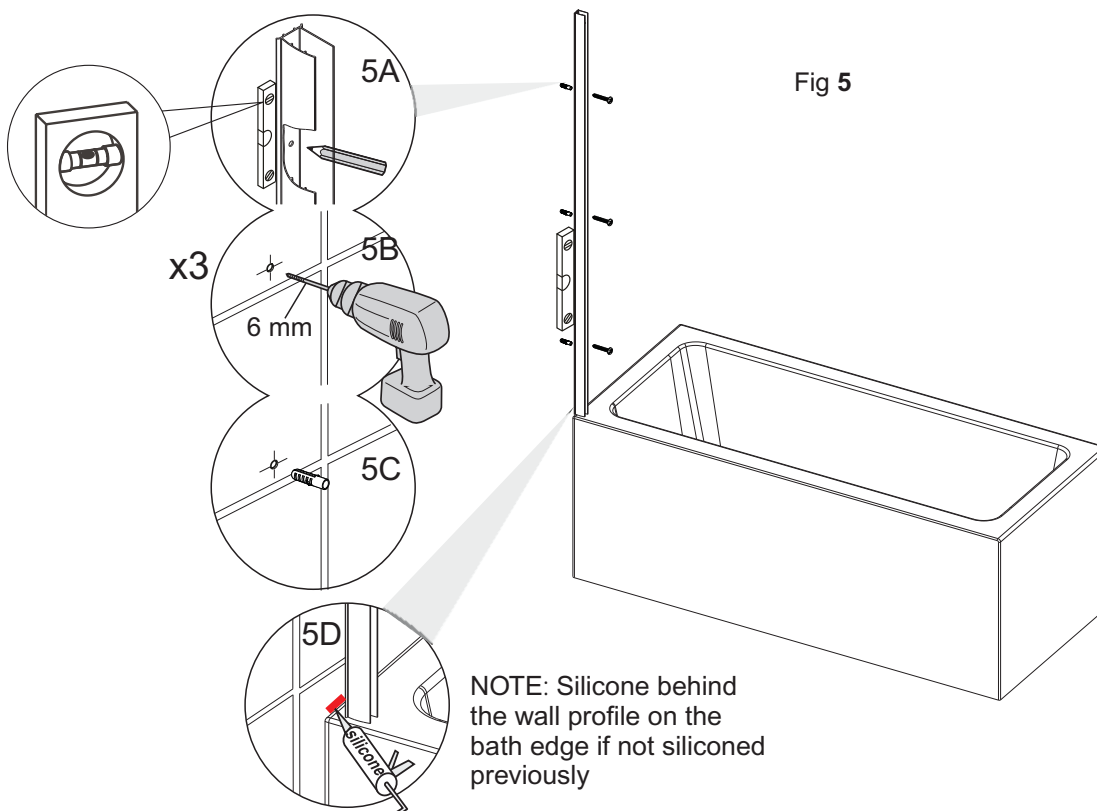
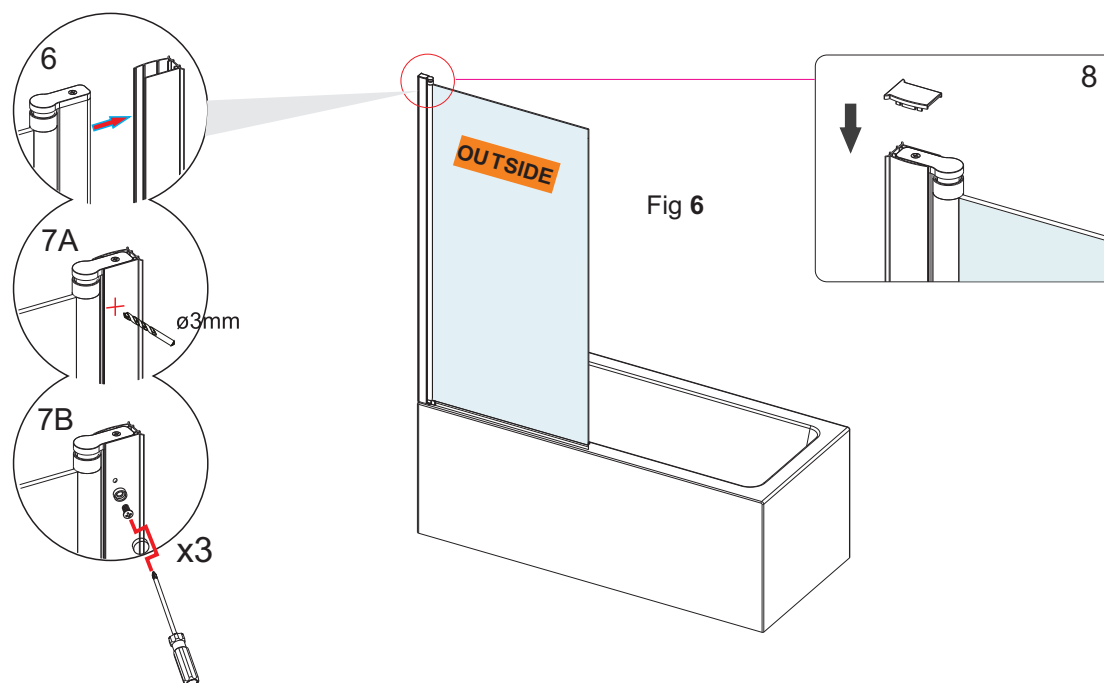


Fig 4

- Plumb the wall profile **LR8387C** using the vertical element of the spirit level. Mark 3 holes, drill with 6mm masonry bit and fit wall plugs **2SP12**. Using the 3 Screw **A2403001**, fix wall profiles to wall. **Fig 5**.



6. Insert the screen into the wall profile. Ensure the bottom seal on the moving panel **A** is parallel to the top surface of the bath.
7. Drill 3 holes top,middle and bottom through the wall profile and hinge upright using a 3mm steel drill bit. Using the Screws **A2401201**,and screw cover caps **2SS008** and screw cover caps clips **2SS009** fix the hinge upright to the wall profile in 3 places.**Fig 6.**
8. Fix the wall profile cover **SP0MOBY002L/R.** bath.



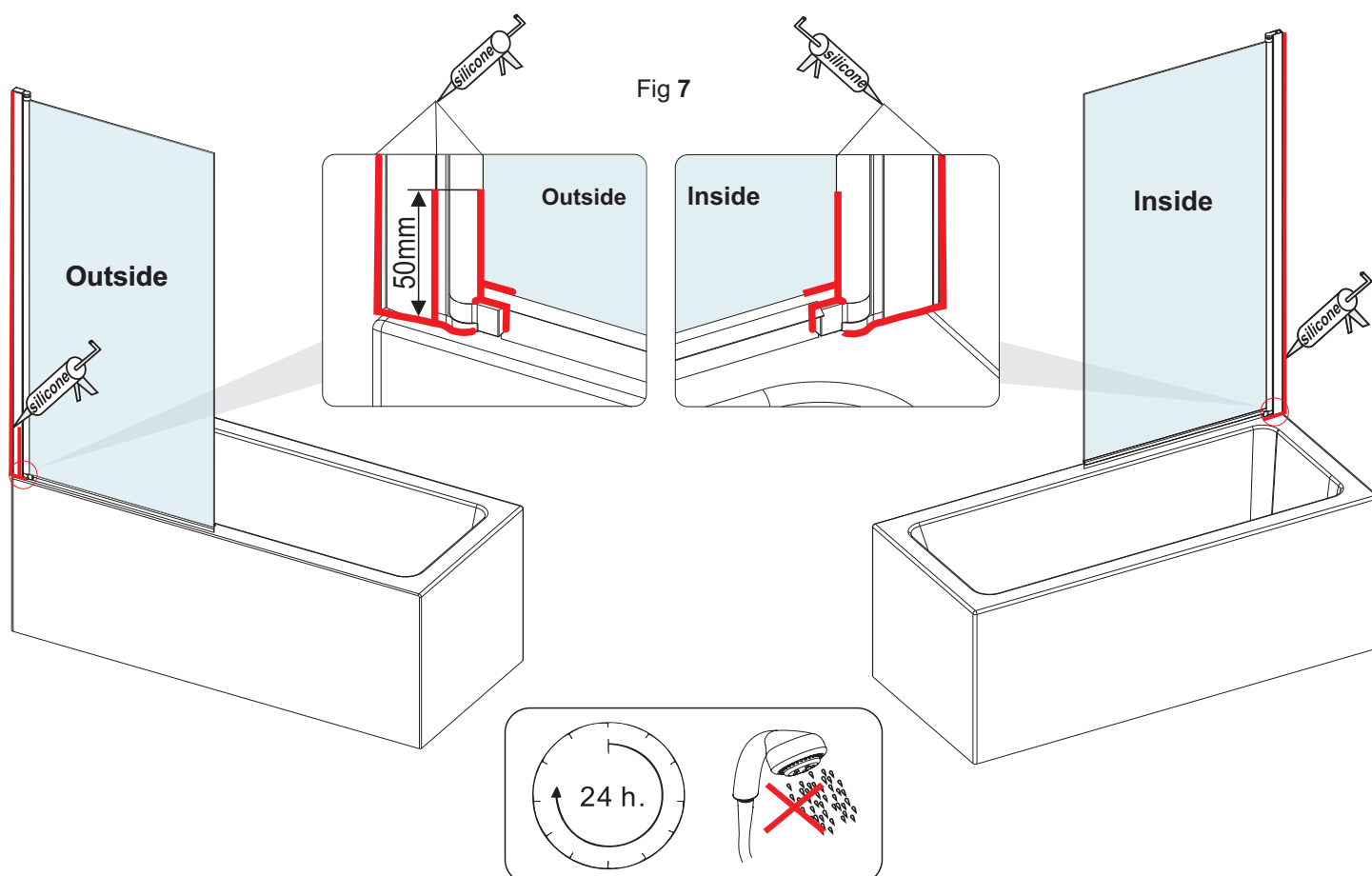
Sealing.Fig 7

Inside and outside :

When installation is complete seal the joint between the wall profile and the wall,top to bottom. Seal around the end of the seal as shown and approx 50mm between the glass and profile. Silicone where the wall profile and hinge bracket sit on the bath inside and outside.

Outside only

Seal 50mm up where the hinge upright and the wall profile over lap.



Installation Guide

Easy-Fit Profile

IMPORTANT

Please read the complete instructions
before commencing fitting.

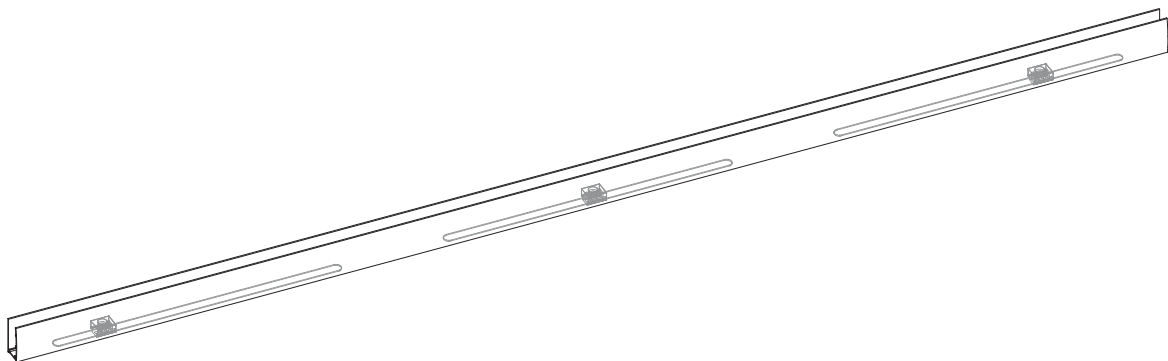
Do Not attempt to install the product unless you can tick all 4 boxes satisfactorily

- | | | | |
|---|--------------------------|--|--------------------------|
| ▪ Check that you have the tools required | <input type="checkbox"/> | ▪ Check all the enclosure components are present | <input type="checkbox"/> |
| ▪ Check the installation site is compatible with the sizes of door supplied | <input type="checkbox"/> | ▪ Check the installation kit is complete | <input type="checkbox"/> |

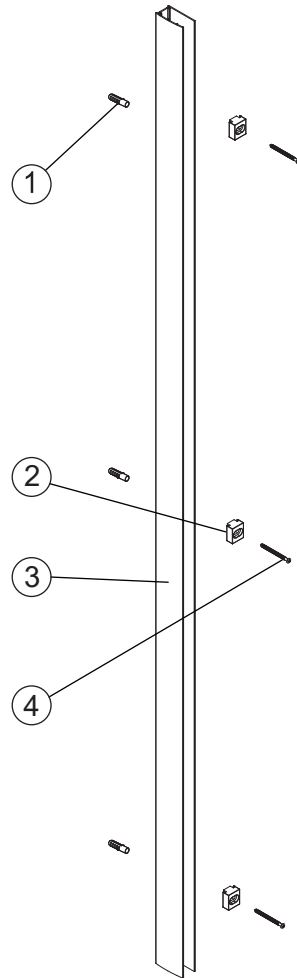
The wall plugs supplied with the installation kit are for use in solid walls. Hollow or 'stud partition' walls will require alternative fixings. Please consult a hardware supplier for the correct type. It may also be necessary to consult your tiling supplier about the correct method for drilling your tiles

ATTENTION: TAKE EXTREME CARE WHEN HANDLING GLASS.
WEAR PROTECTIVE EYEWEAR AND CLOTHING.
DO NOT LEAVE THE GLASS ON HARD SURFACES AND AVOID
CONTACT BETWEEN THE GLASS EDGES AND HARD SURFACES OR
IMPACTS DURING THE INSTALLATION

WARNING: Secure only variants of MERLYN bath screens models MB1, MB2 & MB3 only to the Easy-Fit profile.



COMPONENTS AND BOX CONTENTS



No.	Description	Qty	Part No.
1	Wall plug	3	2SP12
2	Screw block	3	FLEXBLK
3	Wall profile	1	FLEXPFL
4	Screw(4×50mm)	3	2SY50

FIXING KIT COMPONENTS, TOOLS REQUIRED, SITE CONDITIONS

Tools required

- Neutral cure anti bacterial silicone
- Pencil
- Tape measure
- #2 Philips head screw driver
- Spirit level with horizontal and vertical level indicators

IMPORTANT - Installation Site

1. Ensure your bath is level before fitting. The screen that assembles to this profile is not designed to fit on baths with stepped fronts, roll top rims or integral soap dishes.
2. The tiling or other wall finishing should be effectively sealed at the bath edges.

INSTALLATION

1. Replace current wall plugs if required with MERLYN wall plugs supplied with Easy-Fit profile to ensure bath screen will be secure. (FIG 1)

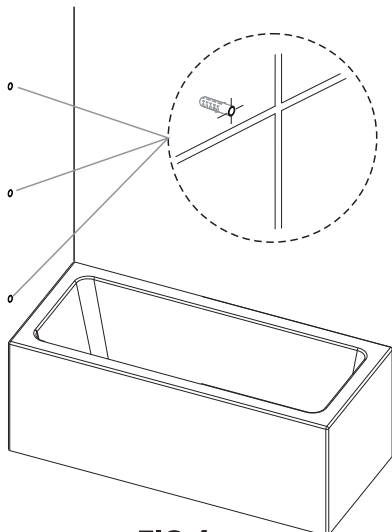


FIG 1

2. Ensure profile is plumb to the wall (FIG 2) and positioned to ensure the bathscreen will be on the inside edge of the bath. (FIG 3)

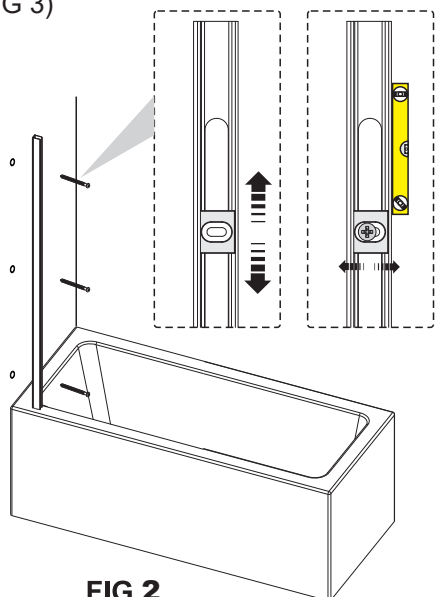


FIG 2

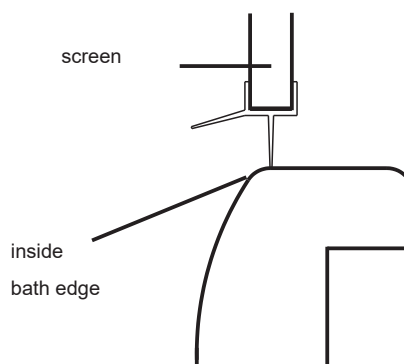


FIG 3

3. Secure only variants of MERLYN bath screens models MB1, MB2 & MB3 only to the Easy-Fit profile. (FIG 4)

4. Refer to bath screen installation instructions to complete the install of the bath screen to the Easy-Fit profile. (FIG 5)

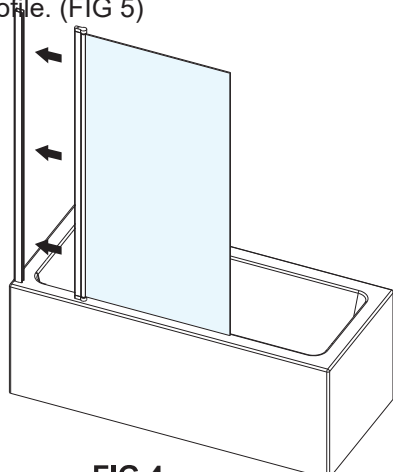


FIG 4



FIG 5