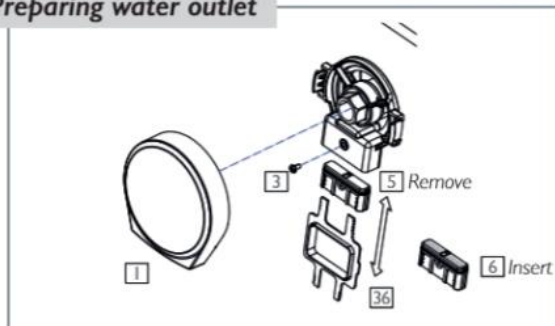


Upgrading two12 to an overflow filler (pre-install)

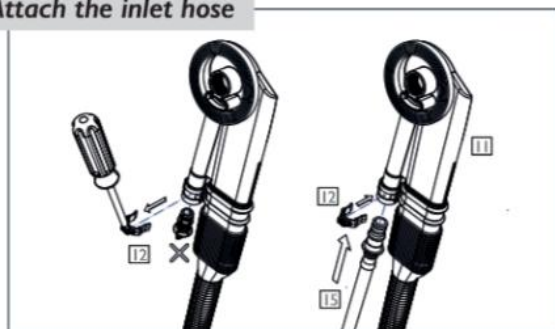
Preparing water outlet



Remove outlet bung and insert water filter aerator.

- A - Remove fixing screw (3). B - Remove white blanking cap (5) with tool (36).
C - Insert grey filter / aerator (6) (red seal to top and screw hole forward).
D - Secure with fixing screw (3). E - Replace cover cap (1).

Attach the inlet hose



Remove inlet blanking plug and install flexible hose.

- A - With a flat bladed screwdriver remove retaining clip (12). B - Remove and discard inlet blanking plug (14). C - Insert inlet flexi hose (15) into water inlet on the overflow assembly (11). D - Secure the flexi hose (15) by re-inserting securing clip (12). E - Test the flexi is secure. F - Connect flexi to mixed water supply (mixing valve not supplied). **Note:** Termination of the flexi hose is 1/2" BSP, F1/2.

Instructional videos are
also available on You Tube

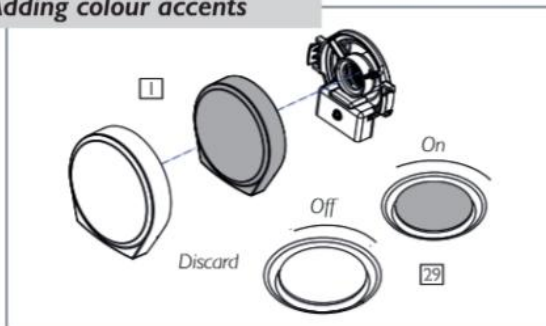
search Waters Baths



Please Scan

two12 Colour Kit Upgrade

Adding colour accents



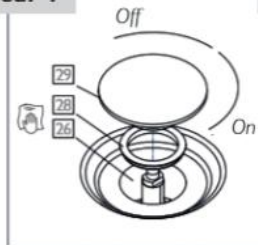
Prior to install remove & discard chrome components.

- A - Replace parts (1) & (29) with colour accent items. B - To remove domed chrome waste cap (29) twist anti-clockwise. C - To replace twist clockwise until hand tight.

Cleaning & maintenance

Clean exterior surfaces with a damp cloth and mild detergent.
CAUTION - Abrasive cloths and cleaning materials may damage exposed surfaces.

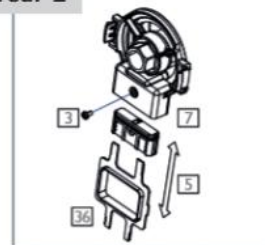
Year 1



Waste cleaning

- A - Remove domed waste cap (29). B - Remove U shaped seal (28) rinse & re-fit or replace. C - Using a soft cloth clean inner edges of waste grate (26). D - Re-fit domed waste cap (29).

Year 2



Filter cleaning

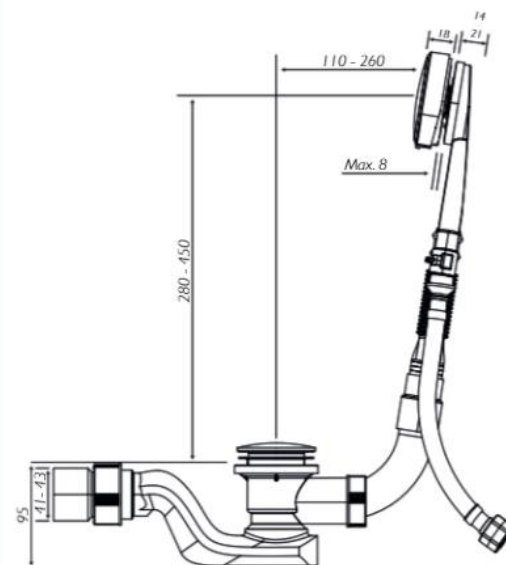
- A - Pinch overflow cover cap (1) to remove. B - Remove fixing screw (3). C - Using tool (36) remove filter aerator (36) rinse & re-fit or replace. D - Re-secure with fixing screw (3). E - Replace overflow cover cap (1).

two12 Overflow Filler Instruction manual

Installed cross-section

The Two-12 overflow filling system is a chrome dual function over flow / filler, designed for reduced space areas and can be upgraded in a choice of 12 colour accents, suitable for all bath types.

Attach to a thermostatic mixing valve (not included) to aerate and filter bathwater, while enjoying a de-cluttered bathroom design.

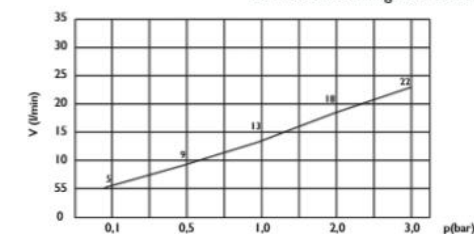


All dimensions in mm, horizontal extension kit also available.

Cross-section includes filler upgrade kit.

Flow Diagram

Do not leave a filling bath unattended.



www. **watersbaths**.co.uk

Waters Baths of Ashbourne - Unit 4, Heritage Business Centre, Belper, Derby, DE56 1SW
t: 01332 824166 e: hello@watersbaths.co.uk