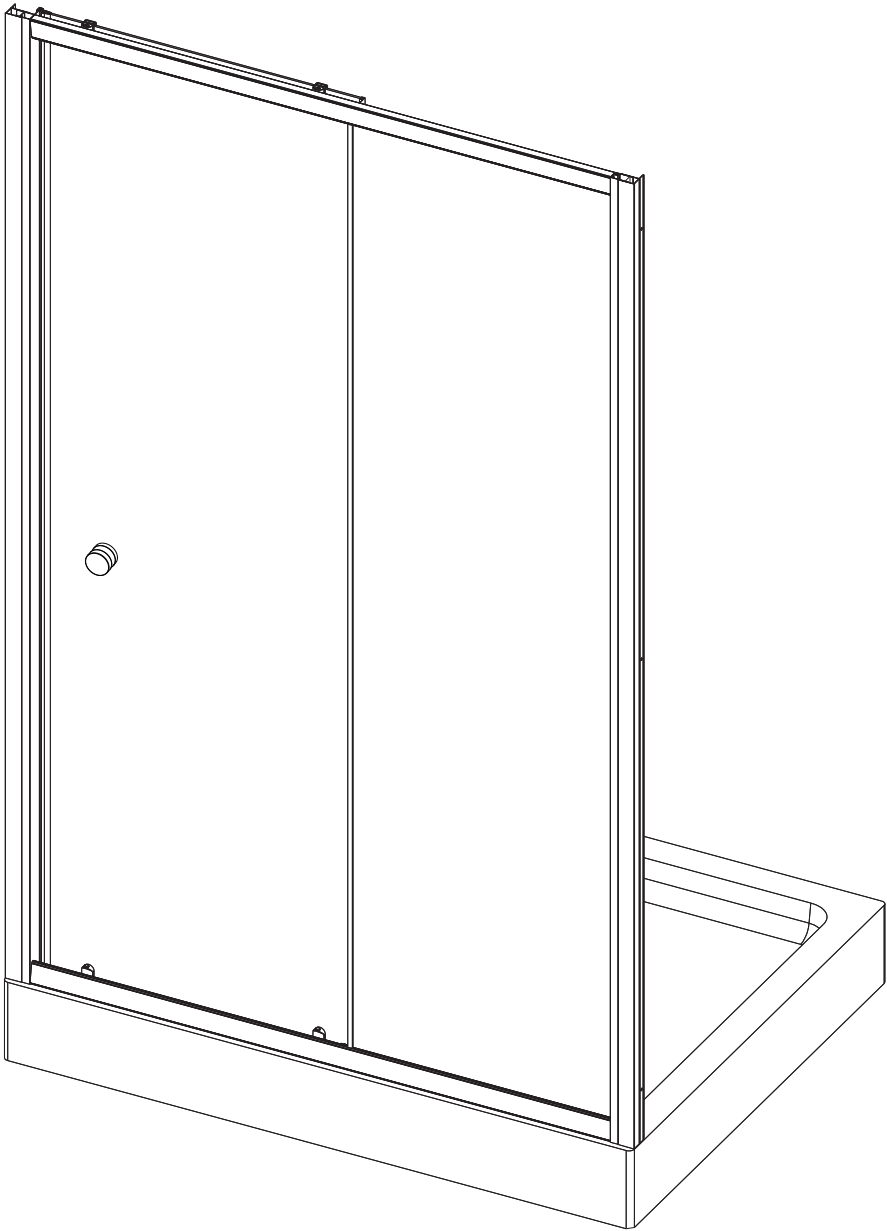


SLIDING DOOR

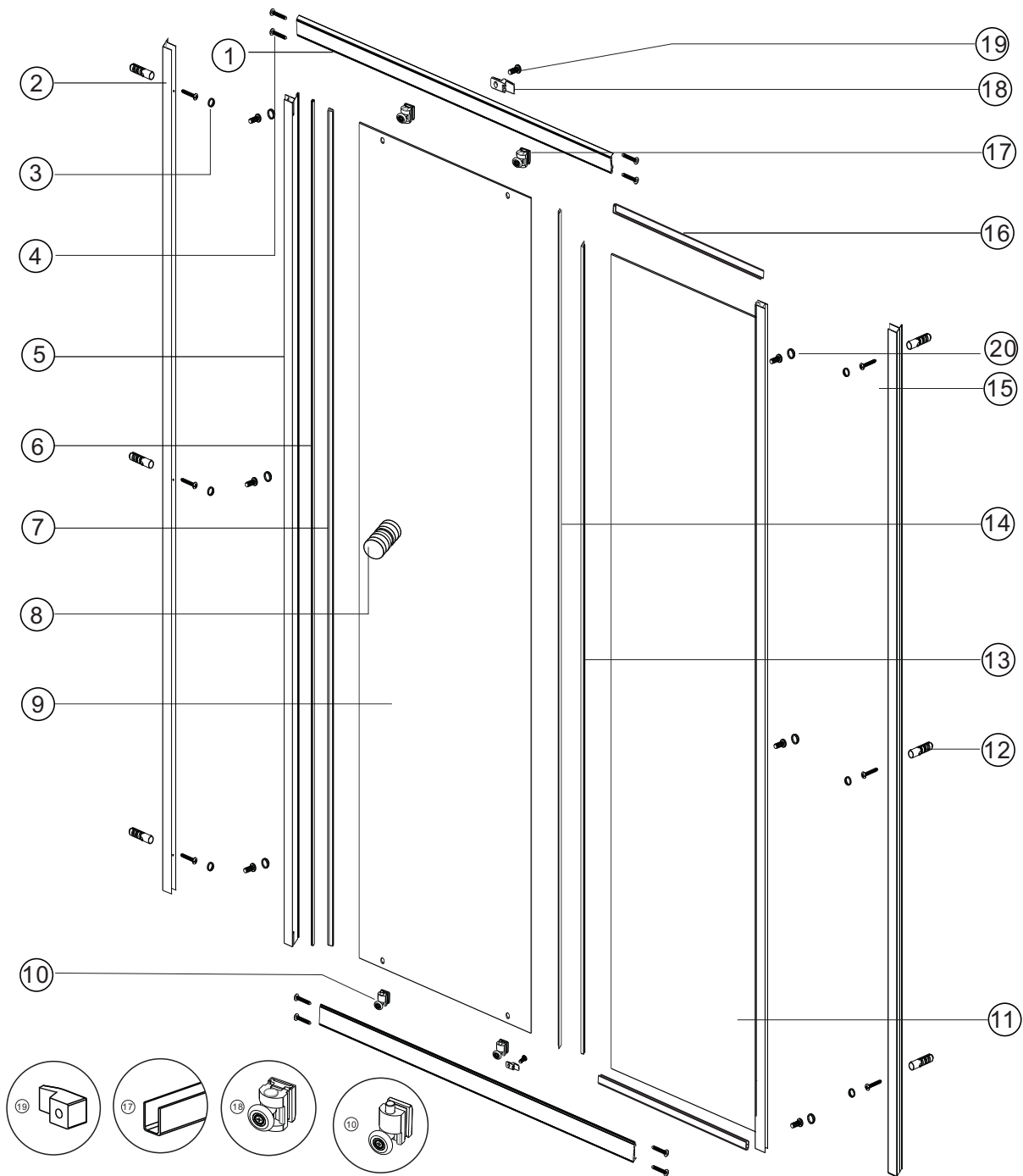


INSTALLATION GUIDE

Size	Product code	Adjustment	Opening space
1000	A1204A0	950-990	380
1100	A1204B0	1050-1090	430
1200	A1204C0	1150-1190	480

ATTENTION

If you install the product in a way that differs from this manual this will void all guarantees. Before installation check that the product meets all your requirements and is not damaged. By proceeding with installation, You accept the condition of the product. The wall plugs supplied with the installation kit are for use in solid walls. Hollow or 'stud partition' walls will require alternative fixings. Please consult your local hardware supplier for the correct type.

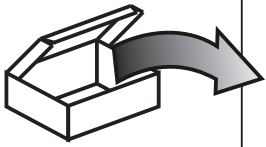


No.	Qty	Part No.
1	2	A
2	2	A02S0020
3	12	C070
4	8	N081
5	1	A02S0022

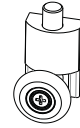
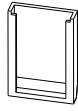
No.	Qty	Part No.
6	1	A02S0039
7	1	A12S0009
8	1	A12S0023
9	1	B
10	2	D6024

No.	Qty	Part No.
11	1	C
12	6	2SP12
13	1	A12S0013
14	1	A12S0015
15	6	2SY51

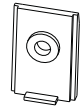
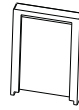
No.	Qty	Part No.
16	2	A12S0055
17	2	D6025
18	2	A12S0020
19	2	N124
20	6	2SY50



D6025
x4



D6024
x4



4x30mm

2SY51
x6



4x16mm

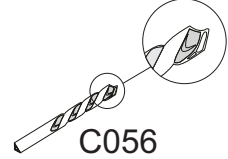
2SY50
x6



2SP12
x6

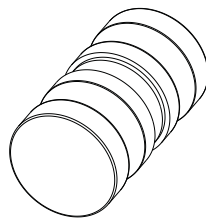


C070
x12

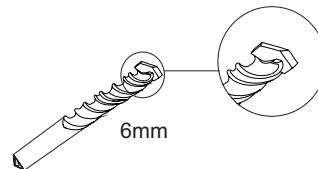
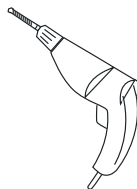
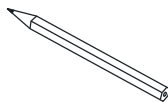


Ø3mm

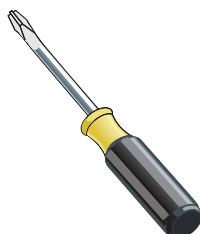
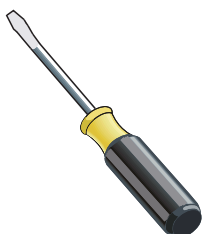
C056
x1



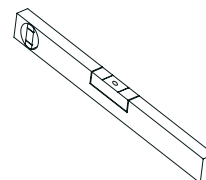
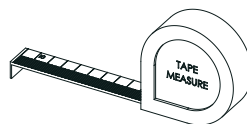
A12S0023
x1



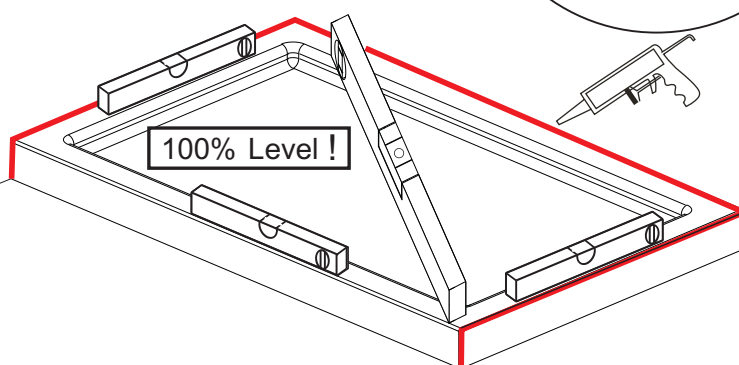
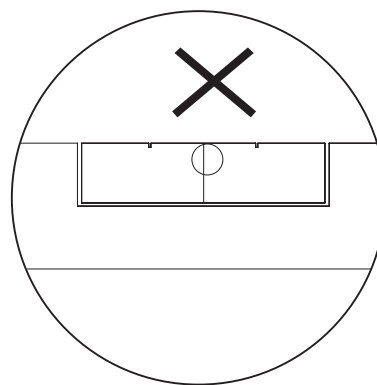
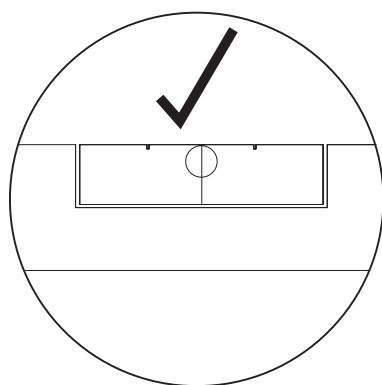
6mm



PH2

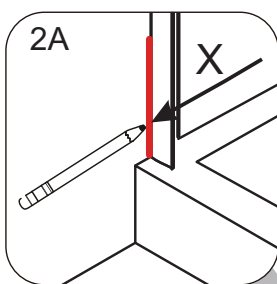


Please ensure your tray is 100% level in all directions before fitting your enclosure.

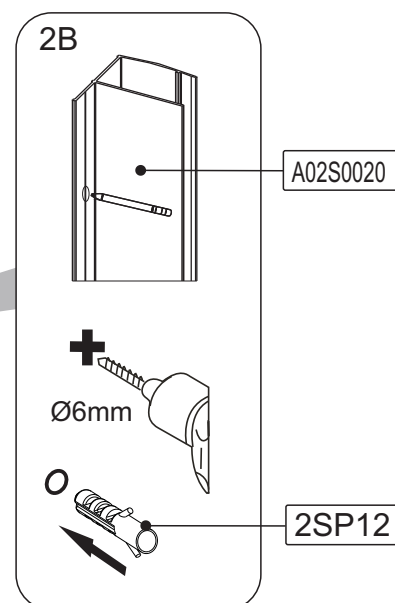
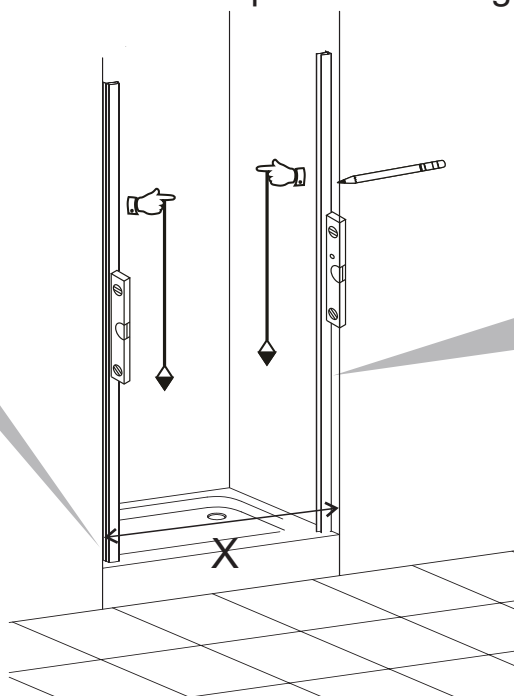


1

Determine your step in from the edge of the tray. Measure your x and y dimension. Your measurements must fall within the below table of adjustments marked as X. Level your wall profiles and mark the points of fixing.

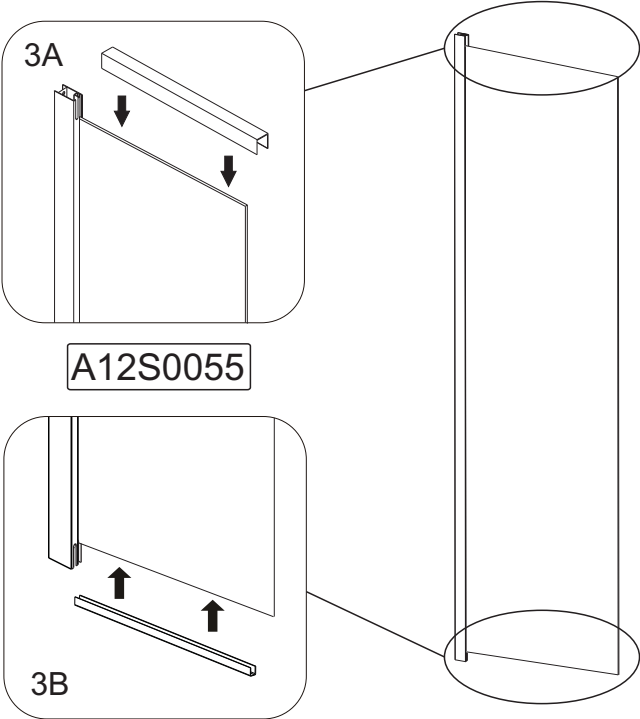


CODE	X
A1204A0	950-990
A1204B0	1050-1090
A1204C0	1150-1190



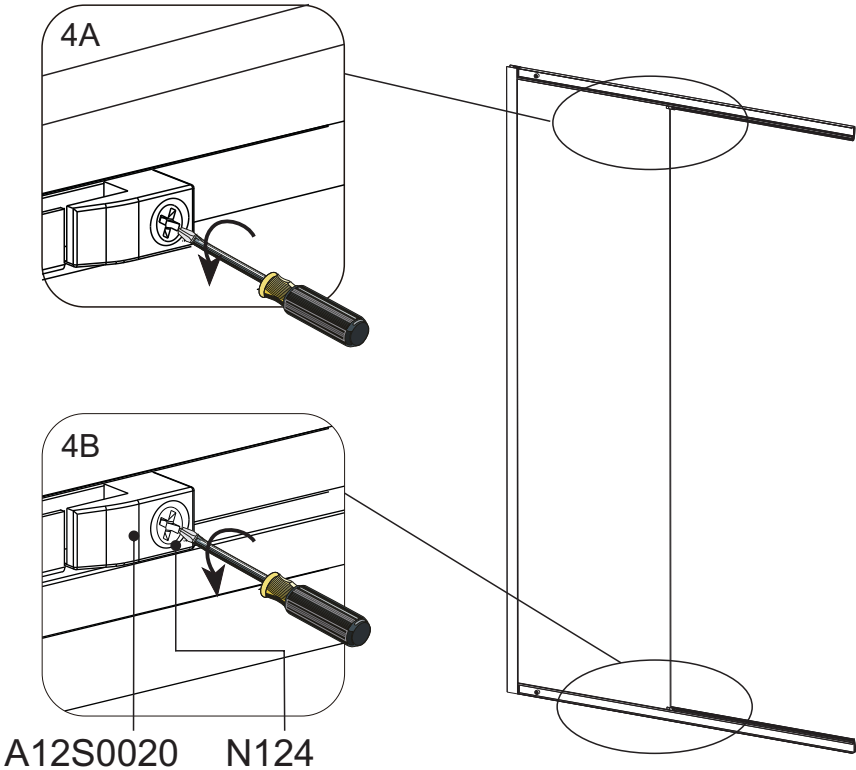
2

Fit your fixed panels seal to the top and bottom of the fixed panel.



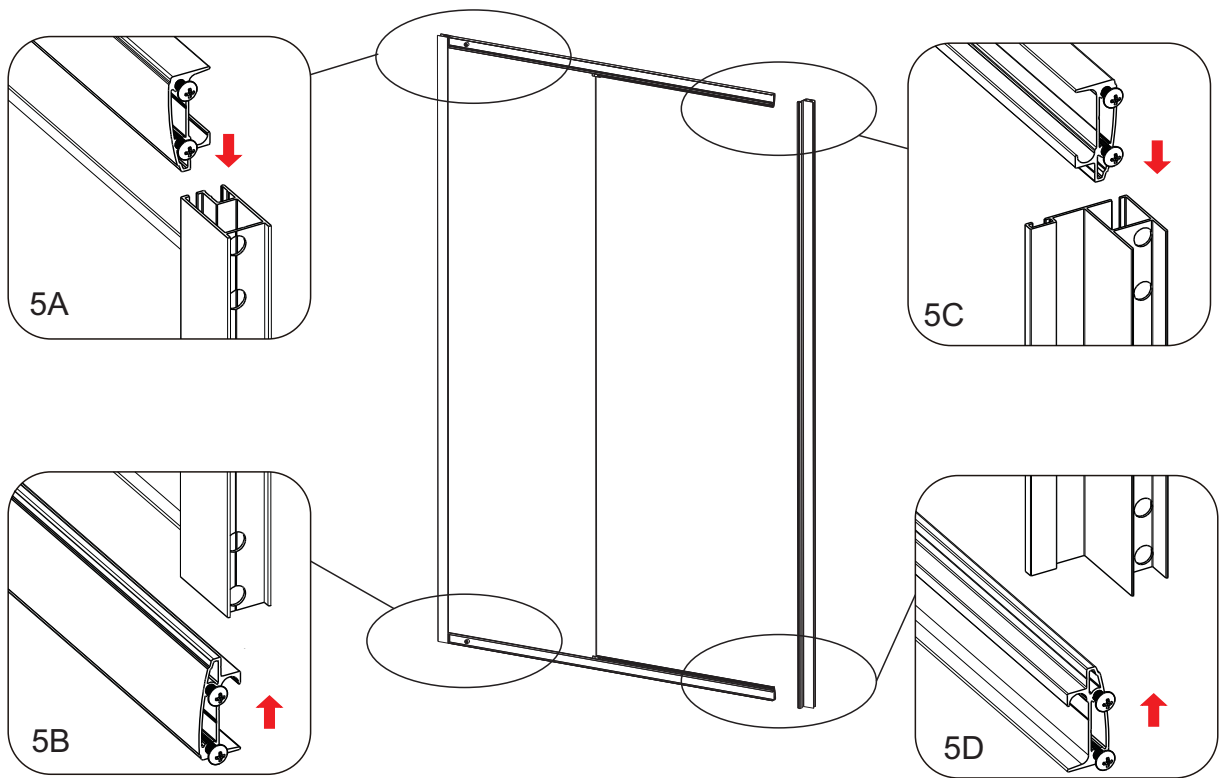
3

Loosen A12S0020 before you fit your top and bottom profile to the upright profile.

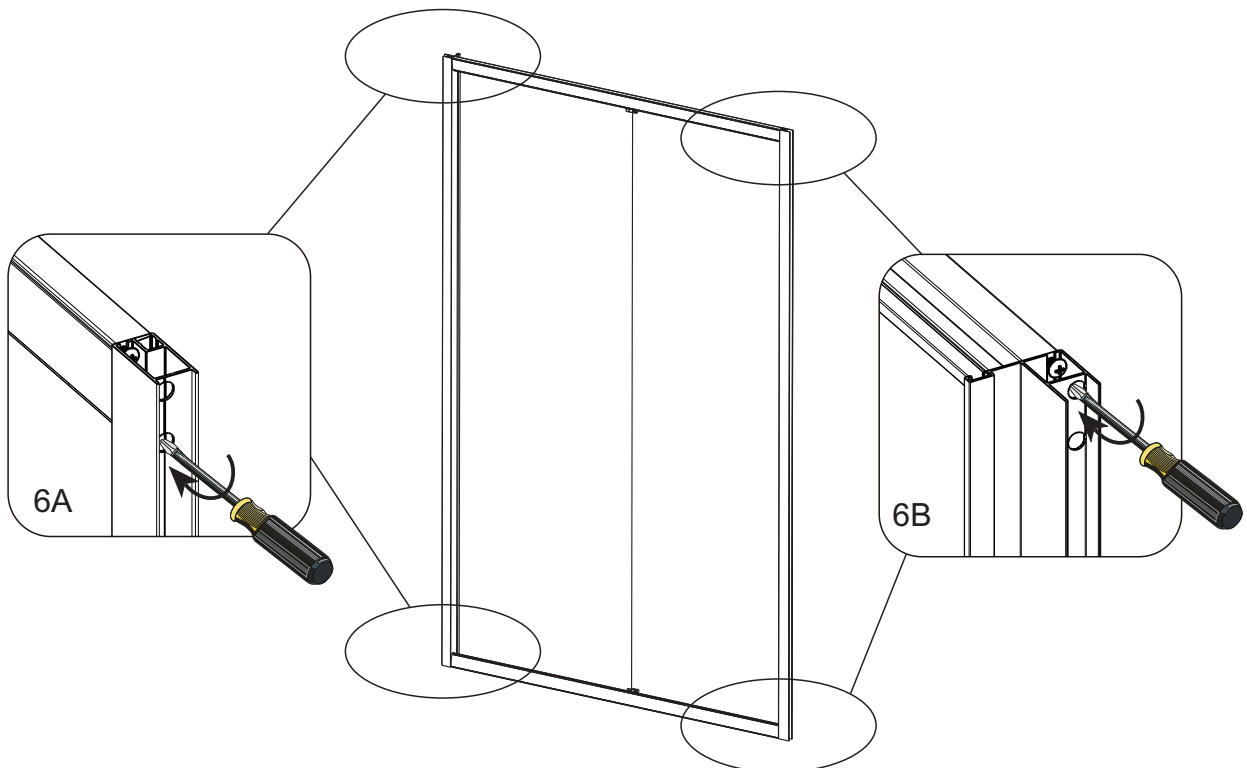


4

Slot the top and bottom profile fixing screws into the slots in the upright profile.



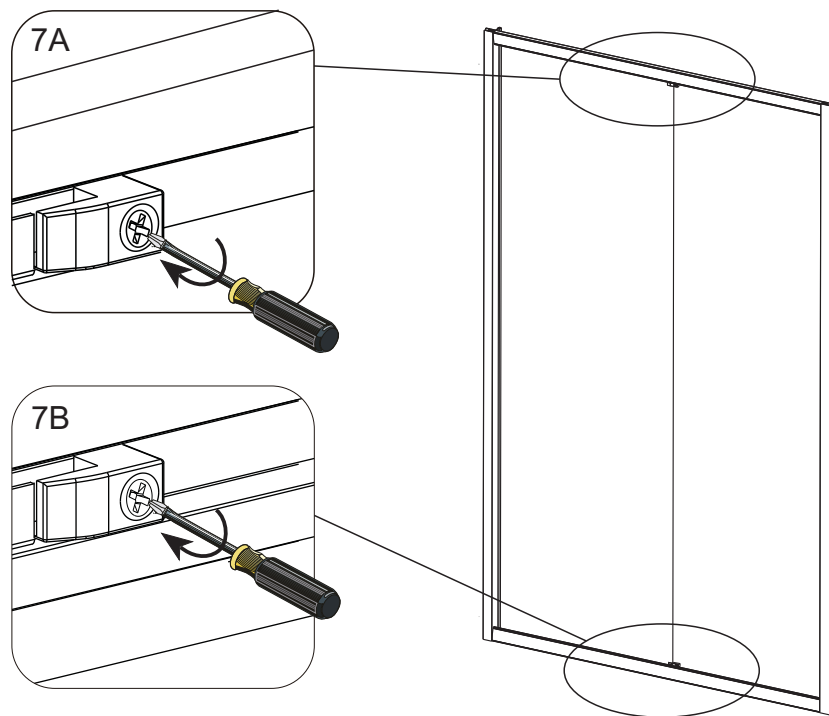
5



6

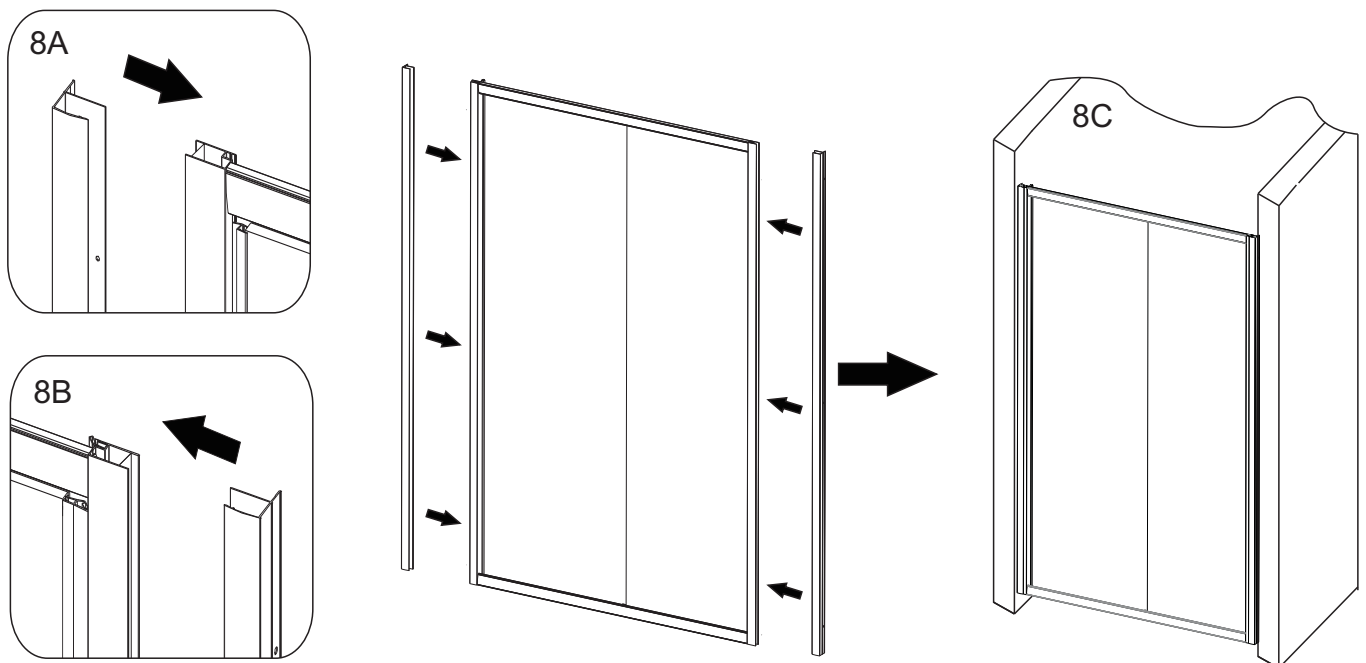
Note: Do not over tighten the screws

Tighten A12S0020 onto the fixed panel to secure the glass.



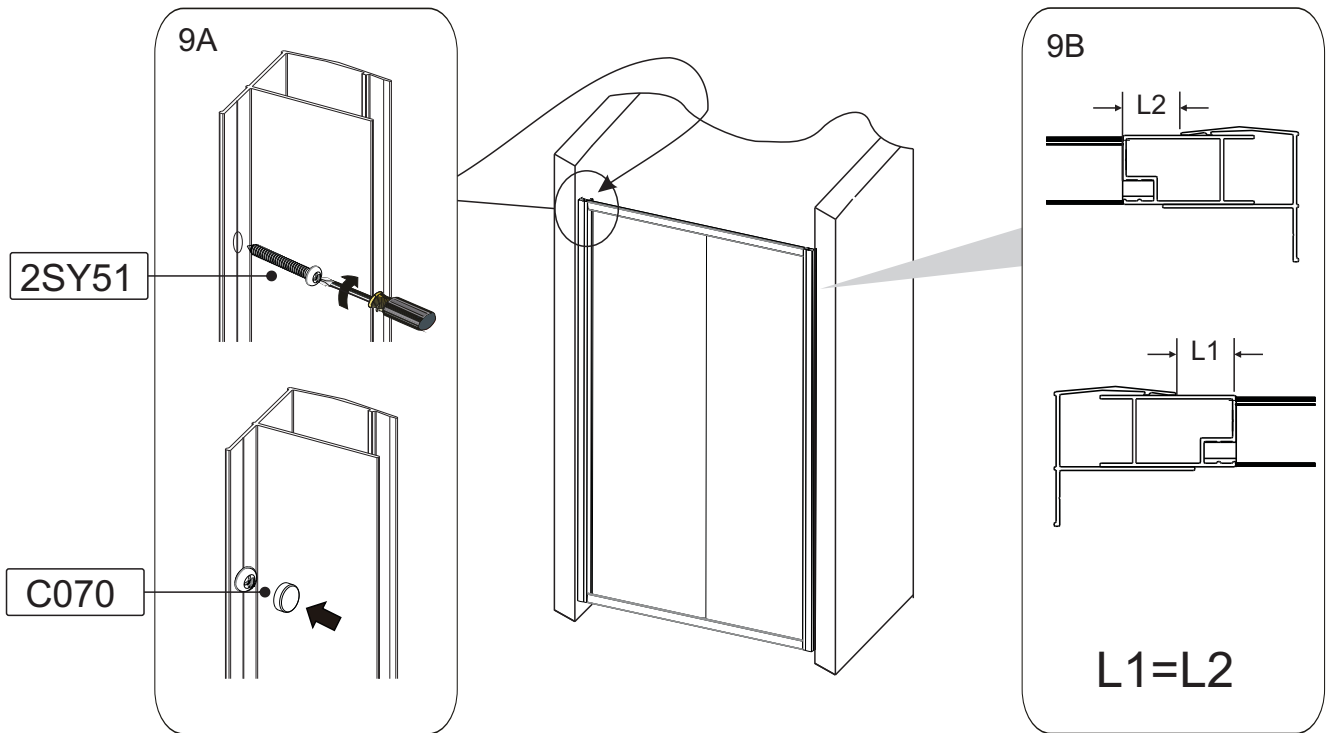
7

When fitting a fully framed product into a recess you must push the wall profiles onto the uprights. This is done as fixing the wall profiles first in a tight recess may lead to difficulty later when fitting your door.

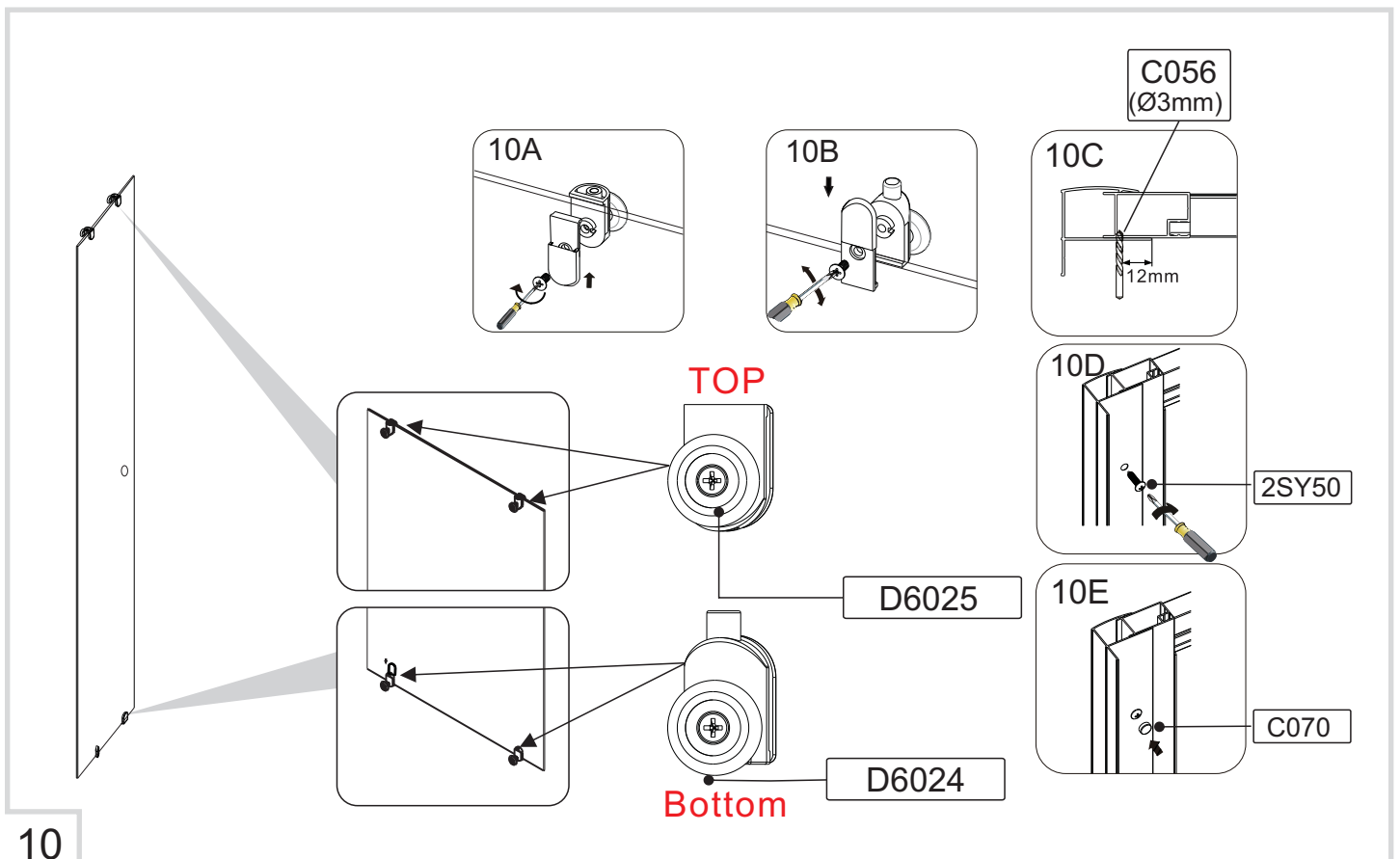


8

When the enclosure is between your two walls you can then fix your wall profiles to the walls using the fixing screws provided.
Equalise the gaps on either side of the upright profiles and fix using 2SY50

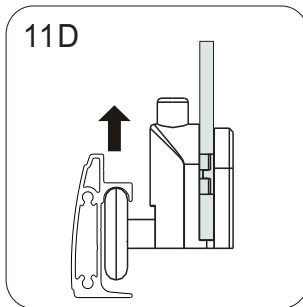
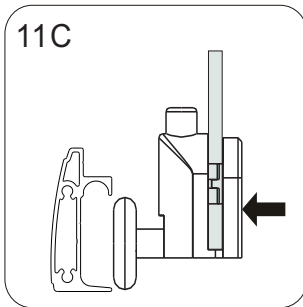
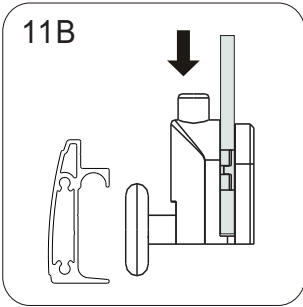
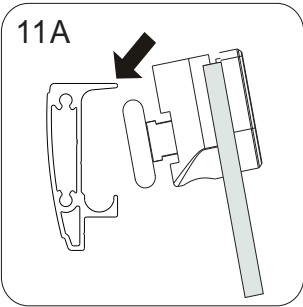
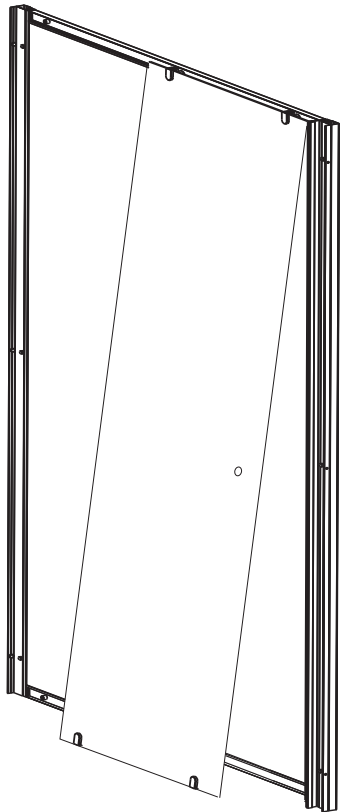


9

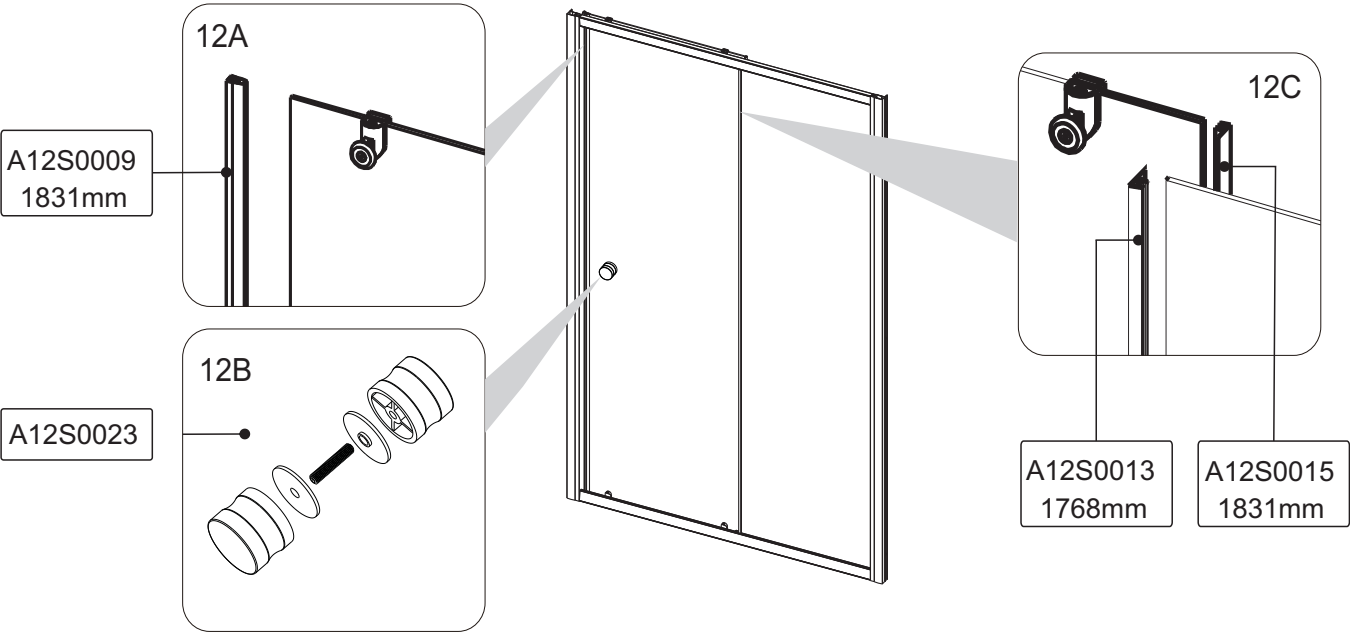


10

To fit your door panel firstly hange the top roller to support the weight of the glass panel. You can then leave your door panel hang making it easier to release your easy clean roller into the bottom track.

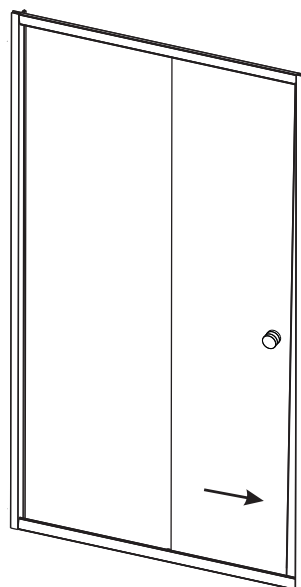
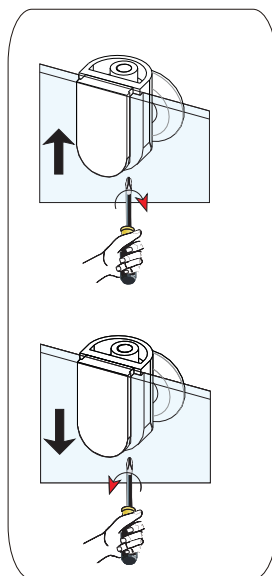
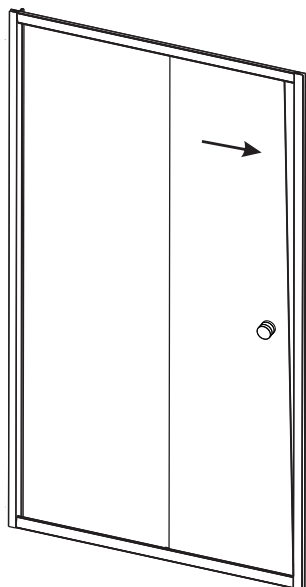


11

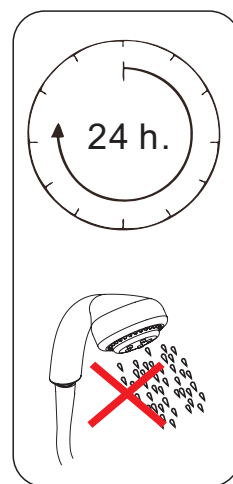
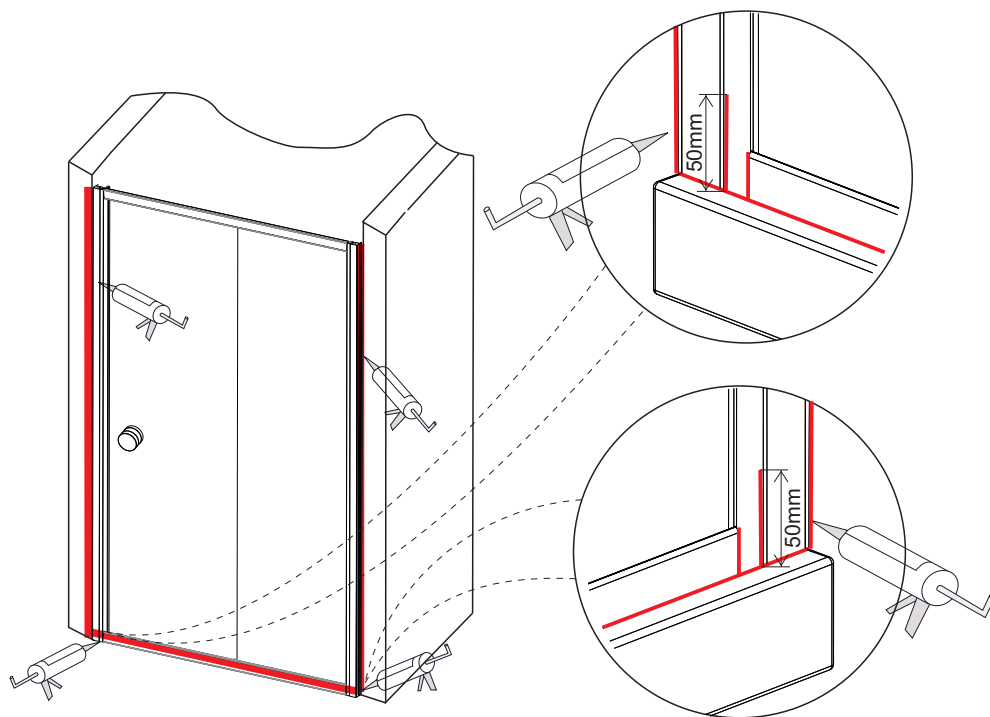


12

You can adjust the gaps between the door panel and the closing post by turning the adjustment screw in the top roller.



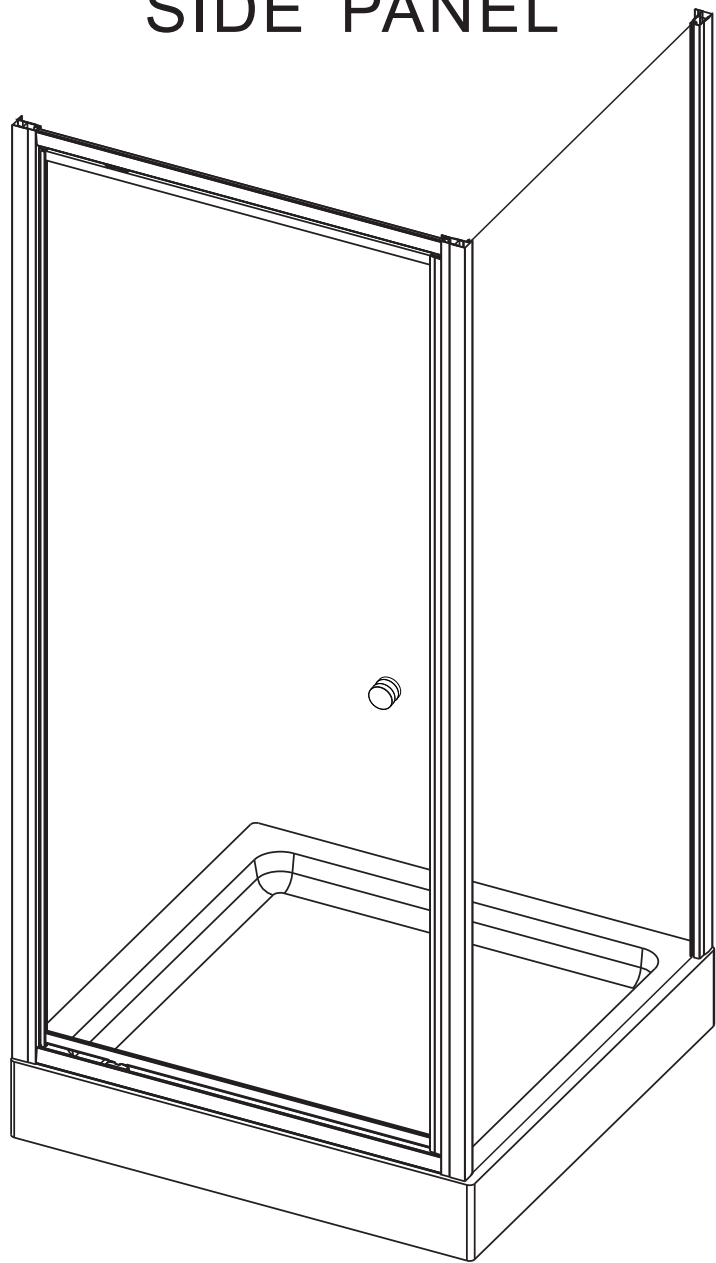
13



14

CE	
Merlyn Industries Ltd (MER09) Purcellsinch, Kilkenny, IRL.	
15	
EN 14428	
Shower enclosures with aluminium profiles and safety glass	
Cleanability	: Pass
Impact resistance/ shatter properties	: Pass
Durability	: Pass

SIDE PANEL

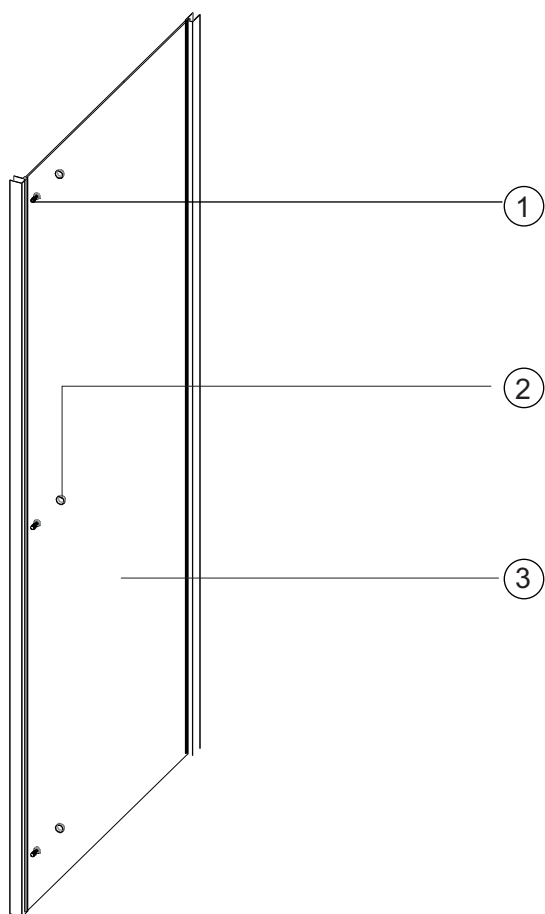


INSTALLATION GUIDE

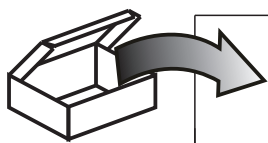
Size	Product code	Adjustment
760	A1207B0	730–750
800	A1207D0	770–790
900	A1207E0	870–890

ATTENTION

If you install the product in a way that differs from this manual this will void all guarantees. Before installation check that the product meets all your requirements and is not damaged. By proceeding with installation, You accept the condition of the product. The wall plugs supplied with the installation kit are for use in solid walls. Hollow or ‘stud partition’ walls will require alternative fixings. Please consult your local hardware supplier for the correct type.



No.	Qty	Part No
1	3	2SY50
2	3	C070
3	1	A

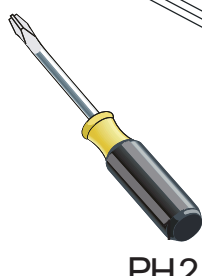


C070
x3

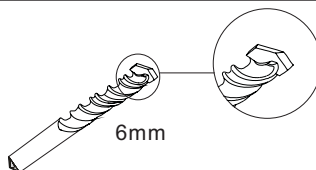
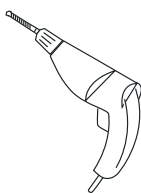
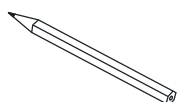
4X16mm



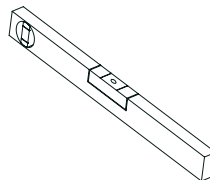
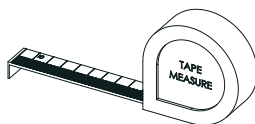
2SY50
x3



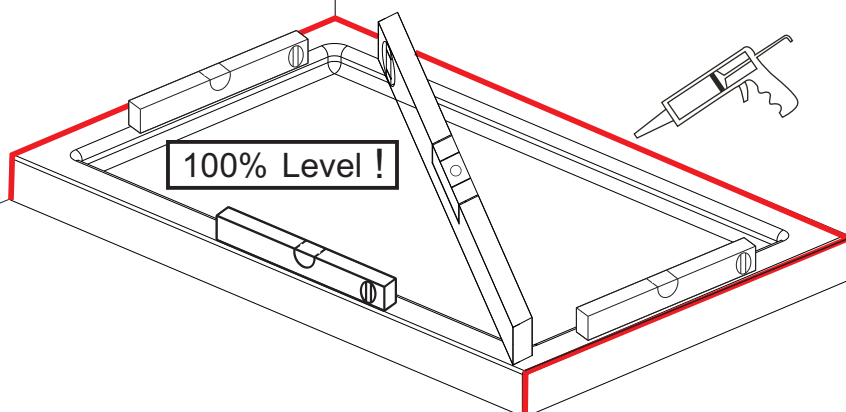
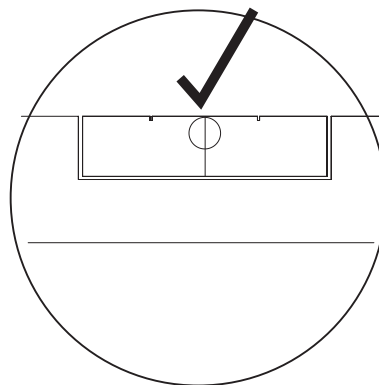
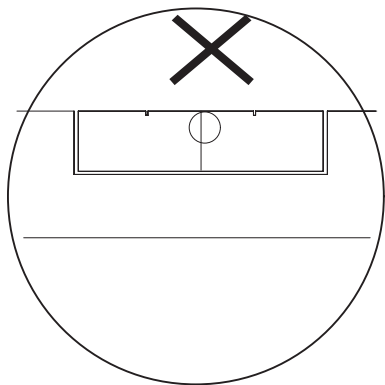
PH2



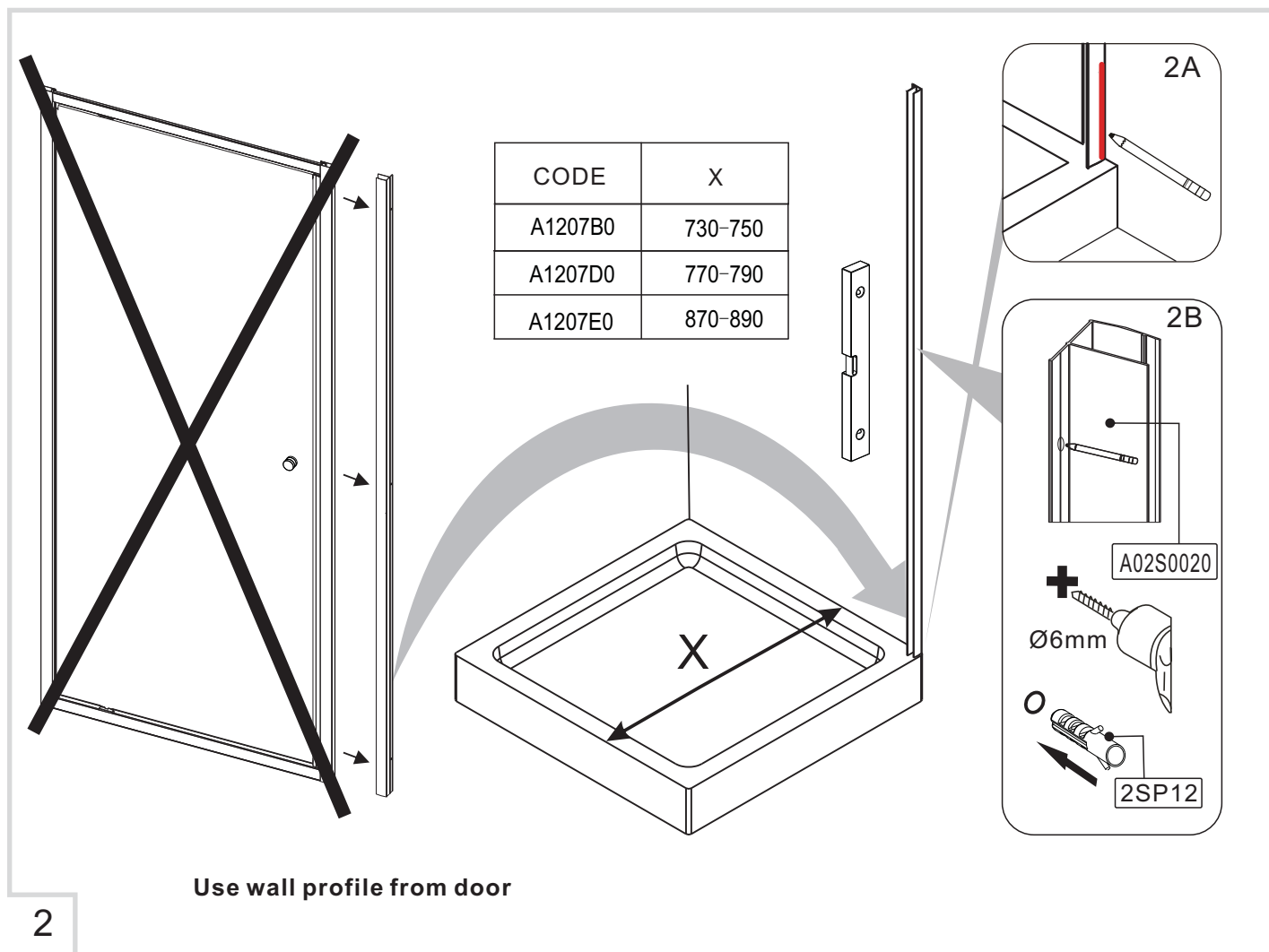
6mm



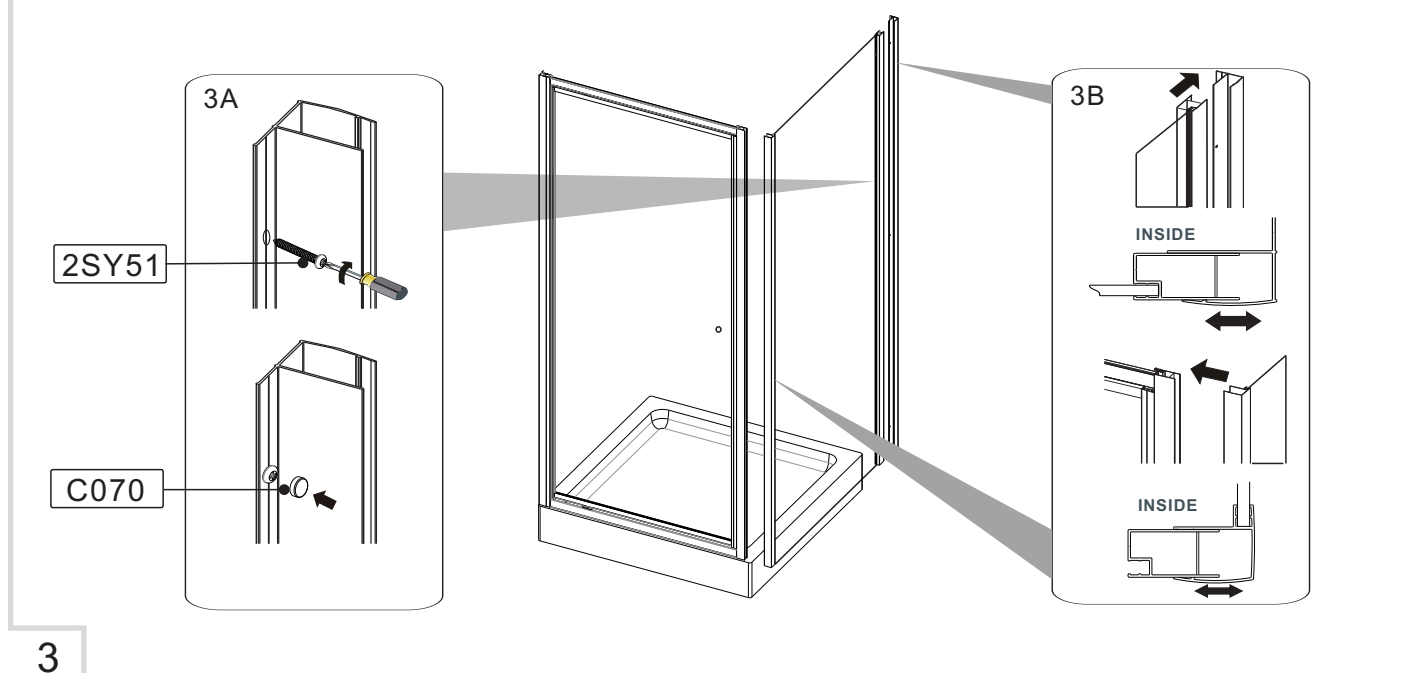
Please ensure your tray is 100% level in all directions before fitting your enclosure.



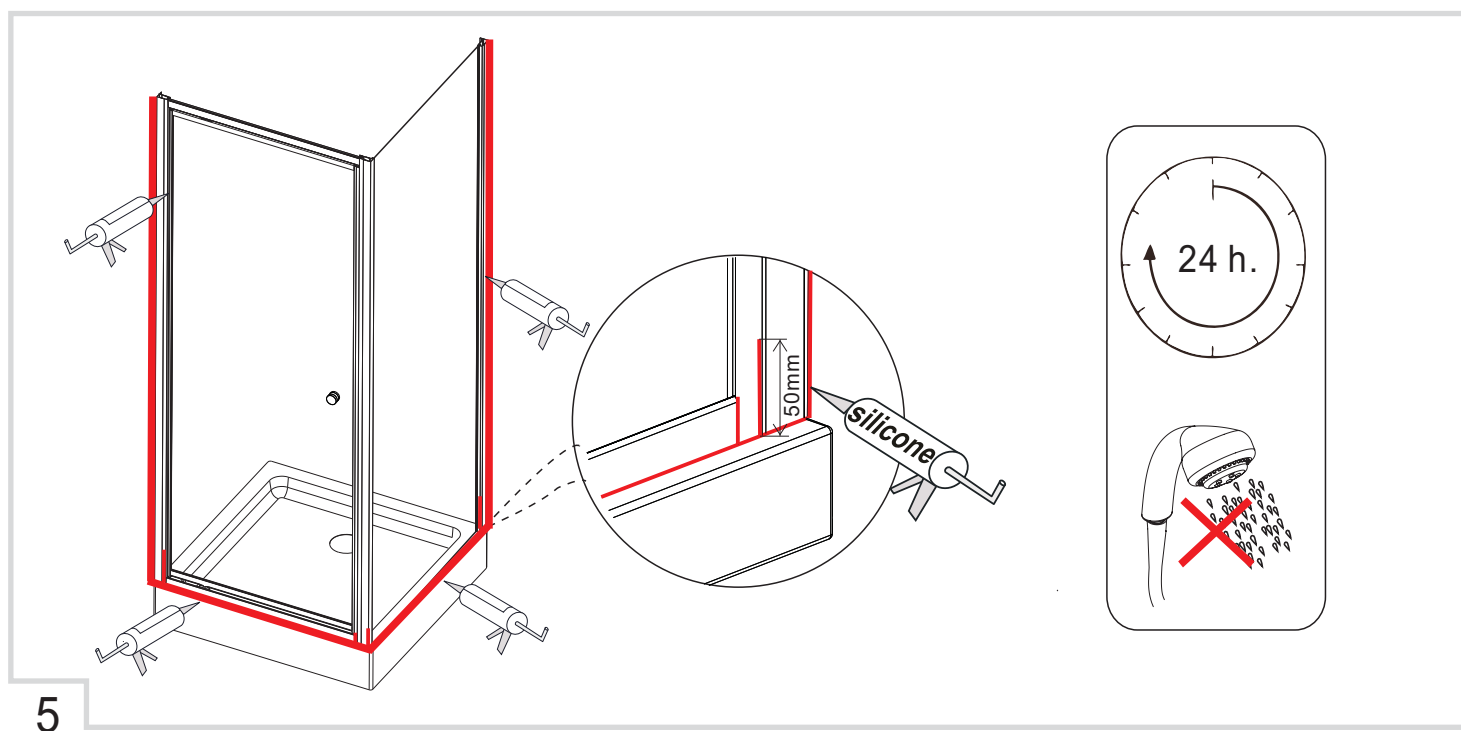
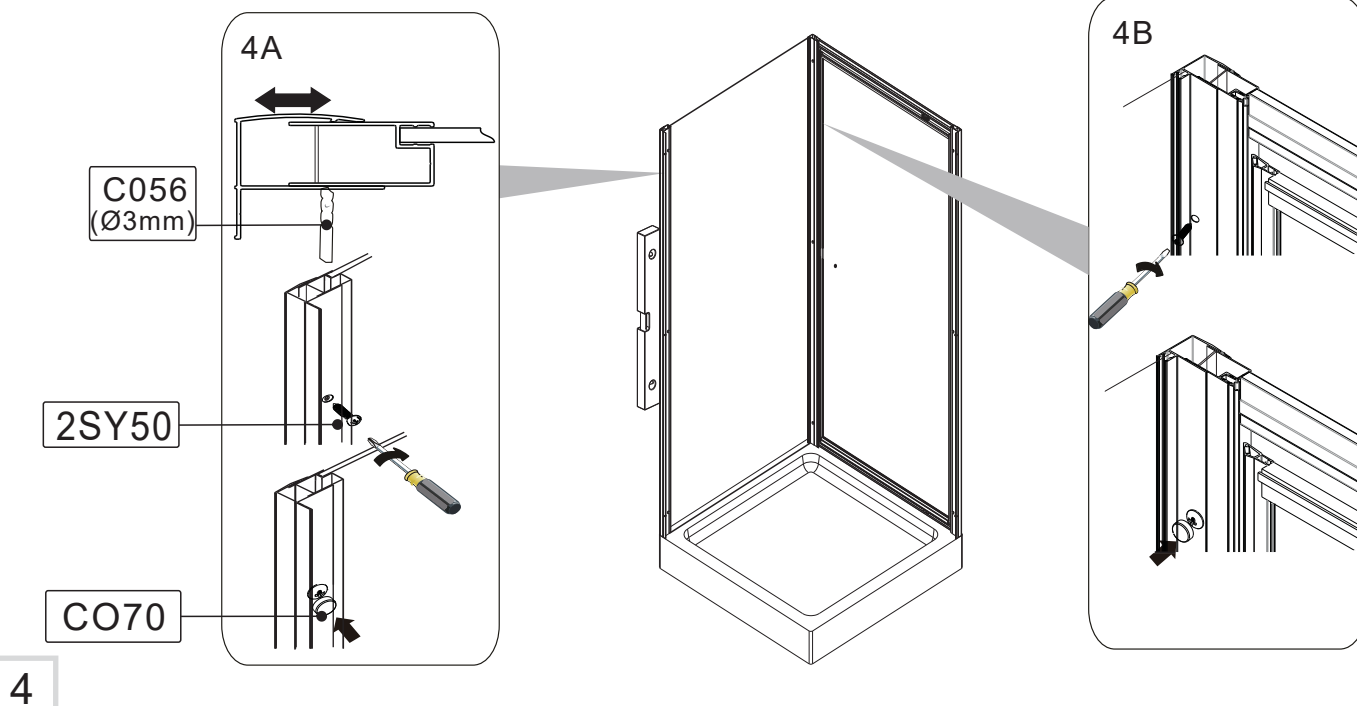
1



After your wall profiles have been fixed you can square your side panel on the tray and fix the wall profiles to the upright profiles as shown below.



The same process is used to fix the corner post to the upright profile of the enclosure.



CE	
Merlyn Industries Ltd (MER09) Purcellsinch, Kilkenny, IRL.	
15	
EN 14428	
Shower enclosures with aluminium profiles and safety glass	
Cleanability	: Pass
Impact resistance/ shatter properties	: Pass
Durability	: Pass