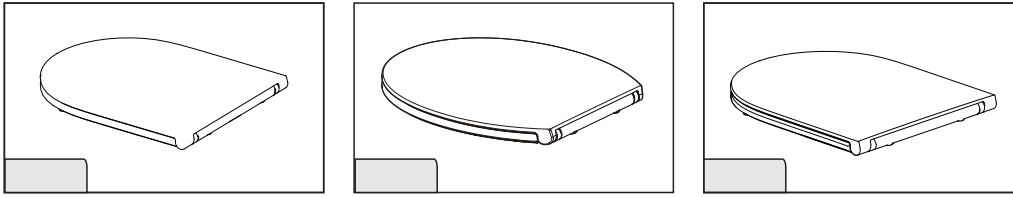
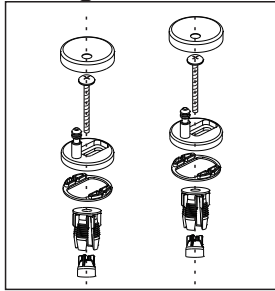


Soft Close Toilet Seat

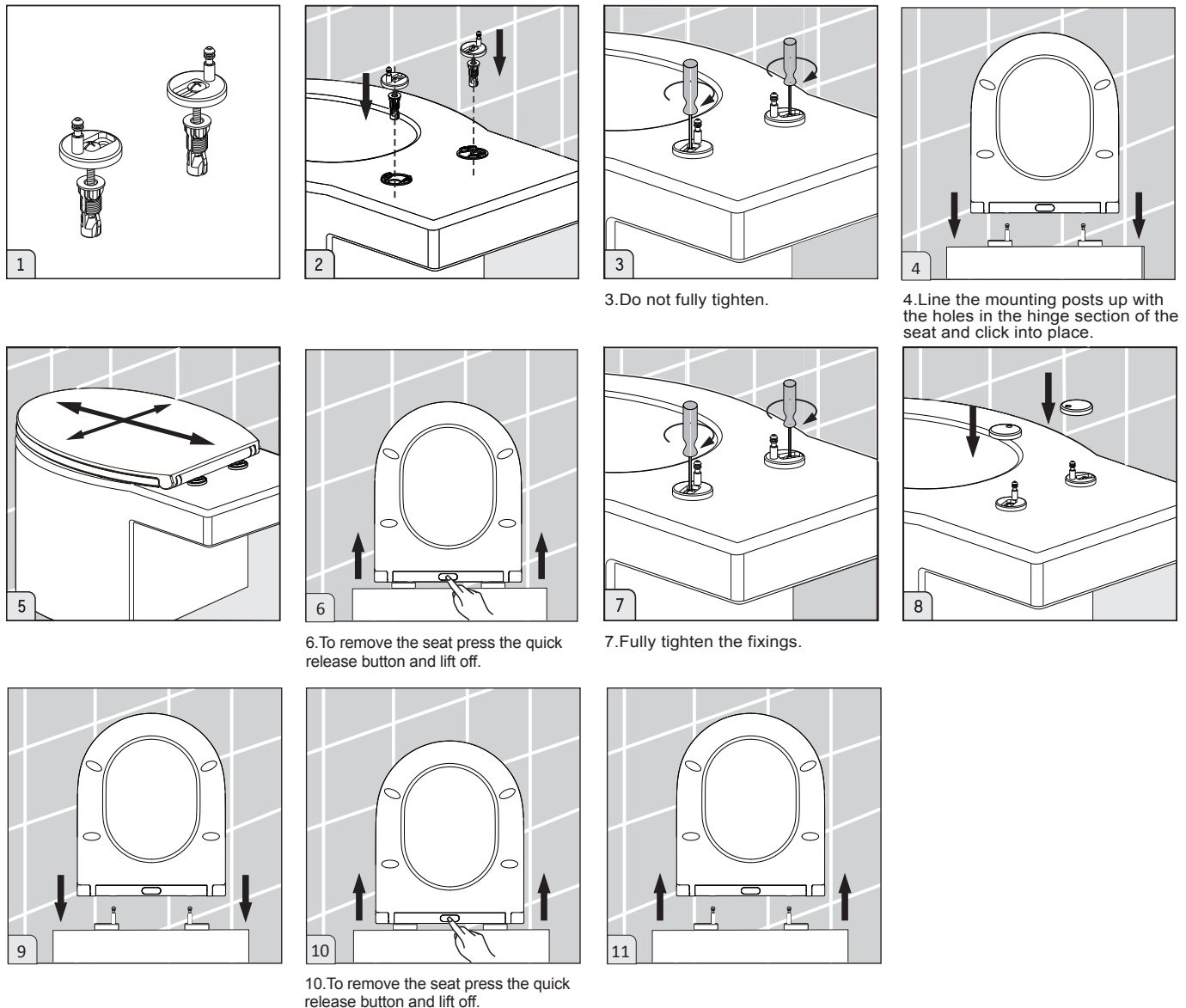


Fittings



Installation Steps

■ Before installation check that all parts are present.



Operation

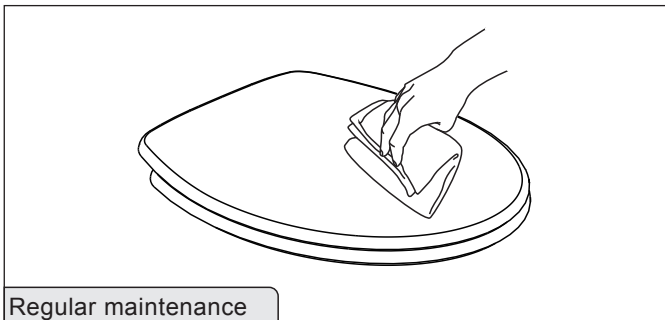
Allow the seat and lid to close under their own weight.

Care and Maintenance

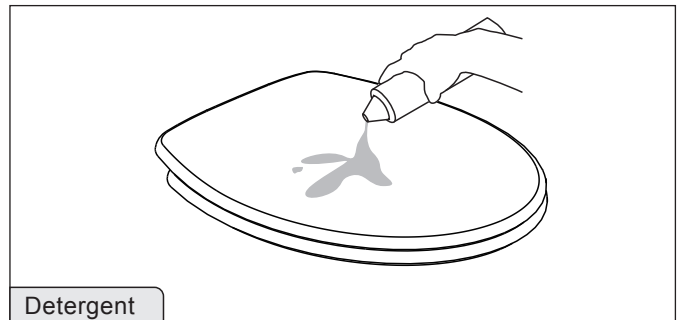


Do not stand on the seat or lid as this can cause damage.

As with all toilets seats: If you use bleaches and strong cleaners in the pan, do not leave the seat closed whilst the cleaner acts on the pan– the fumes from bleaches & cleaners may destroy and/or discolour the finish on the seat.

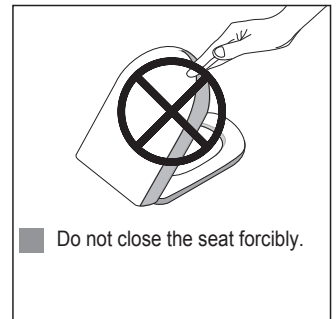
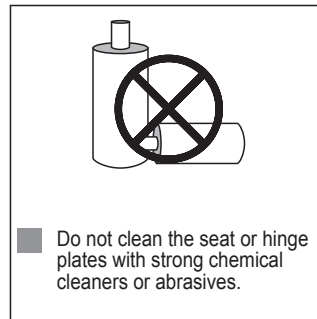
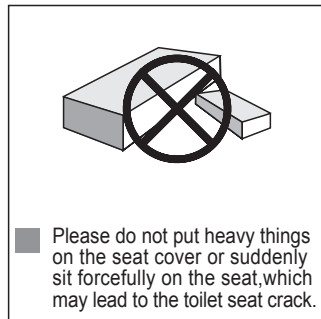
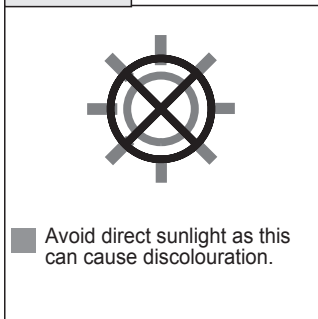


- Clean the seat and hinge plates with a mild detergent then dry with a soft cloth.

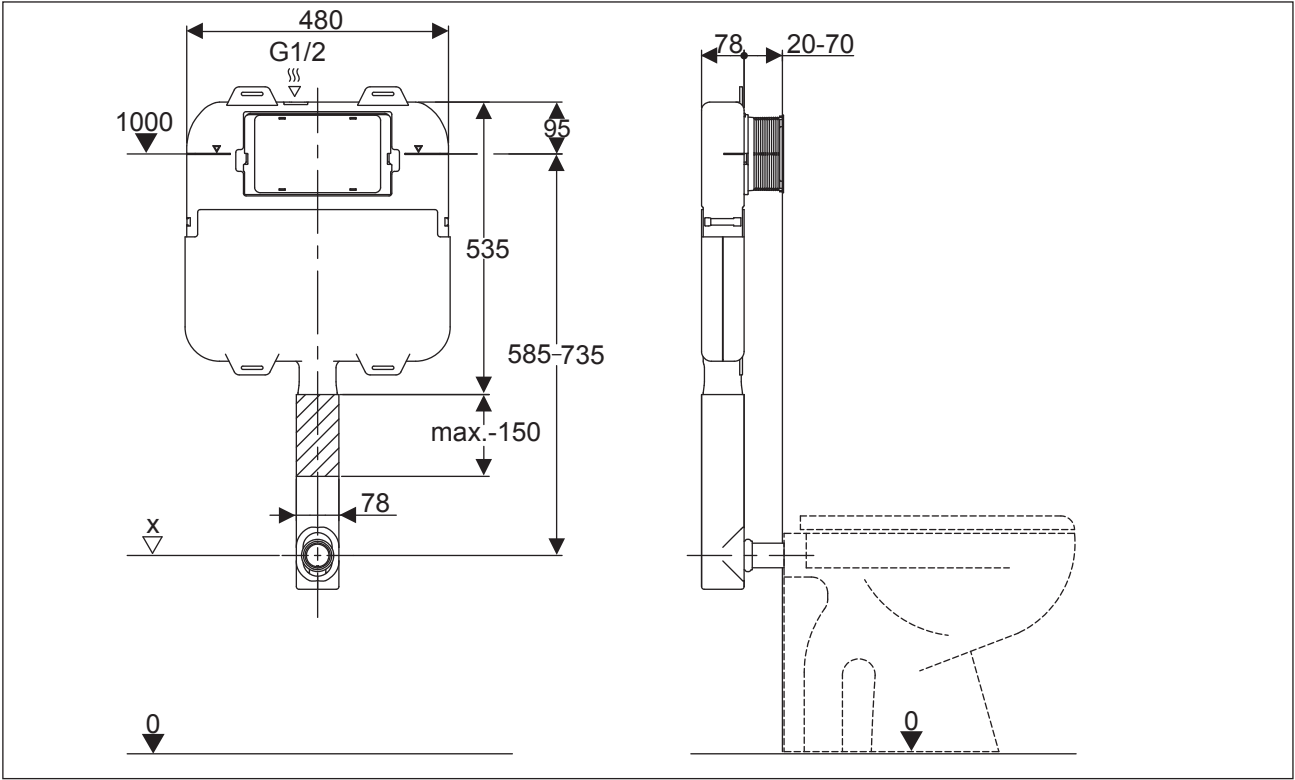
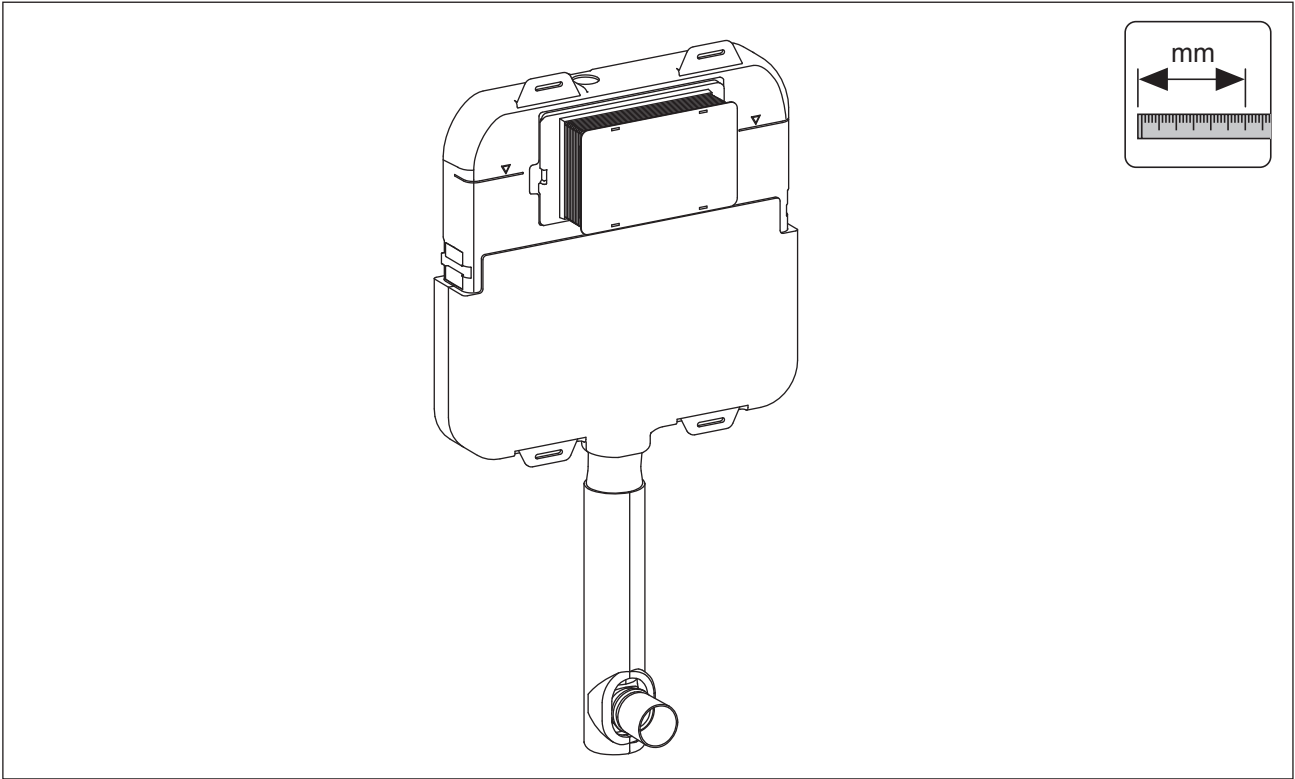


- Don't clean the toilet seat with abrasive powder.
- Do not allow chemicals or cosmetics to come in contact with the seat.

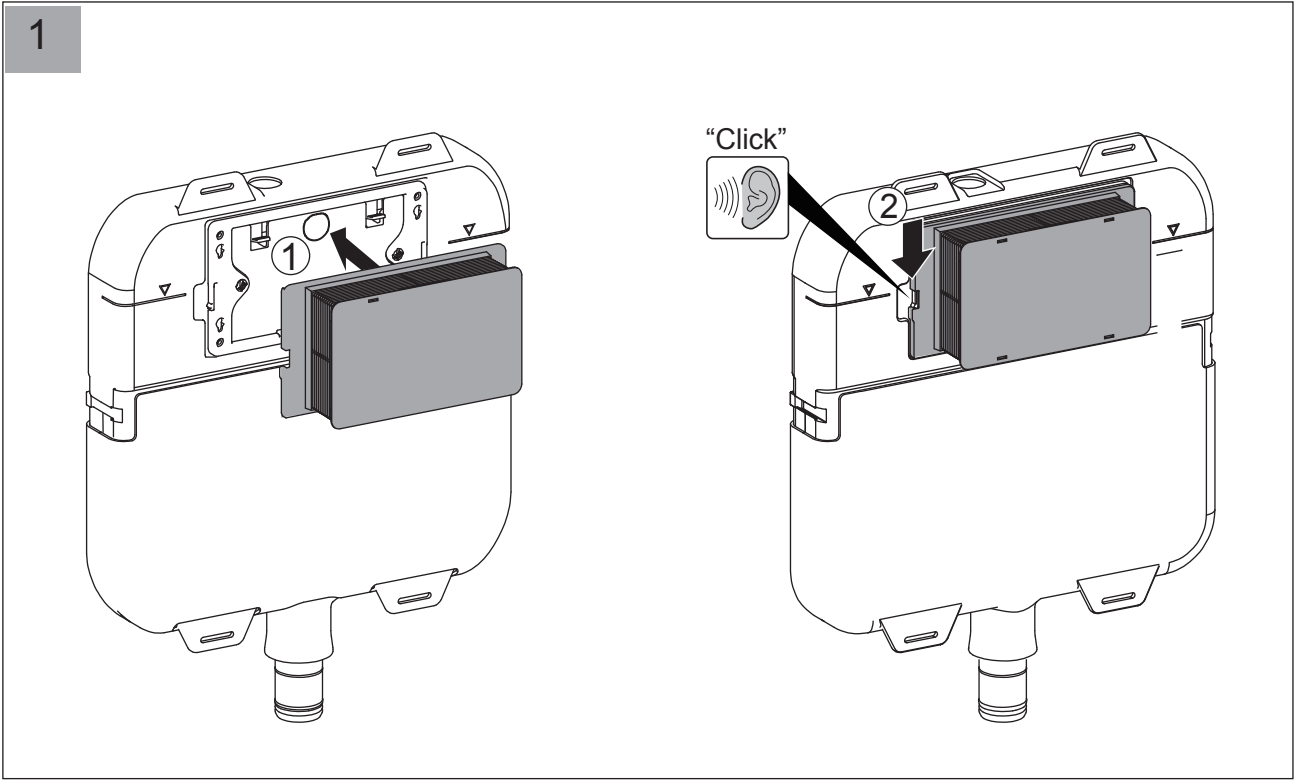
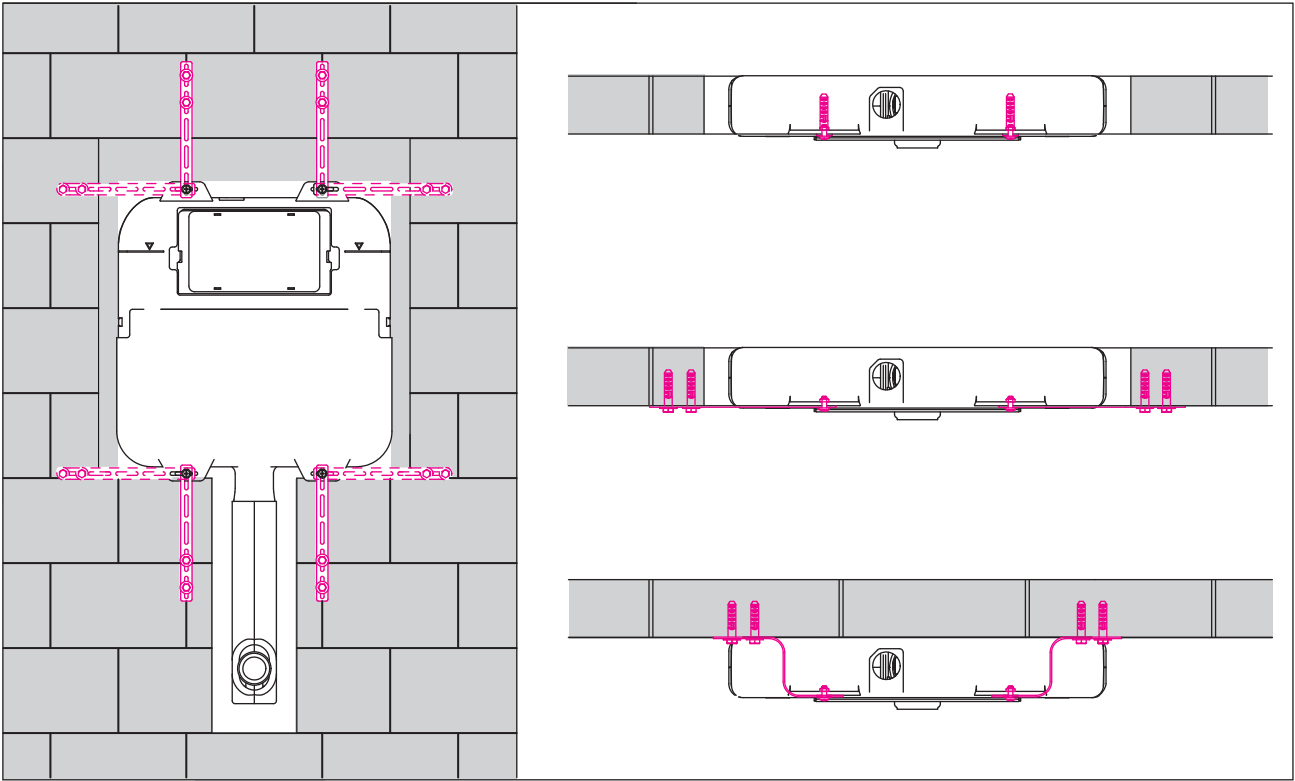
Cautions

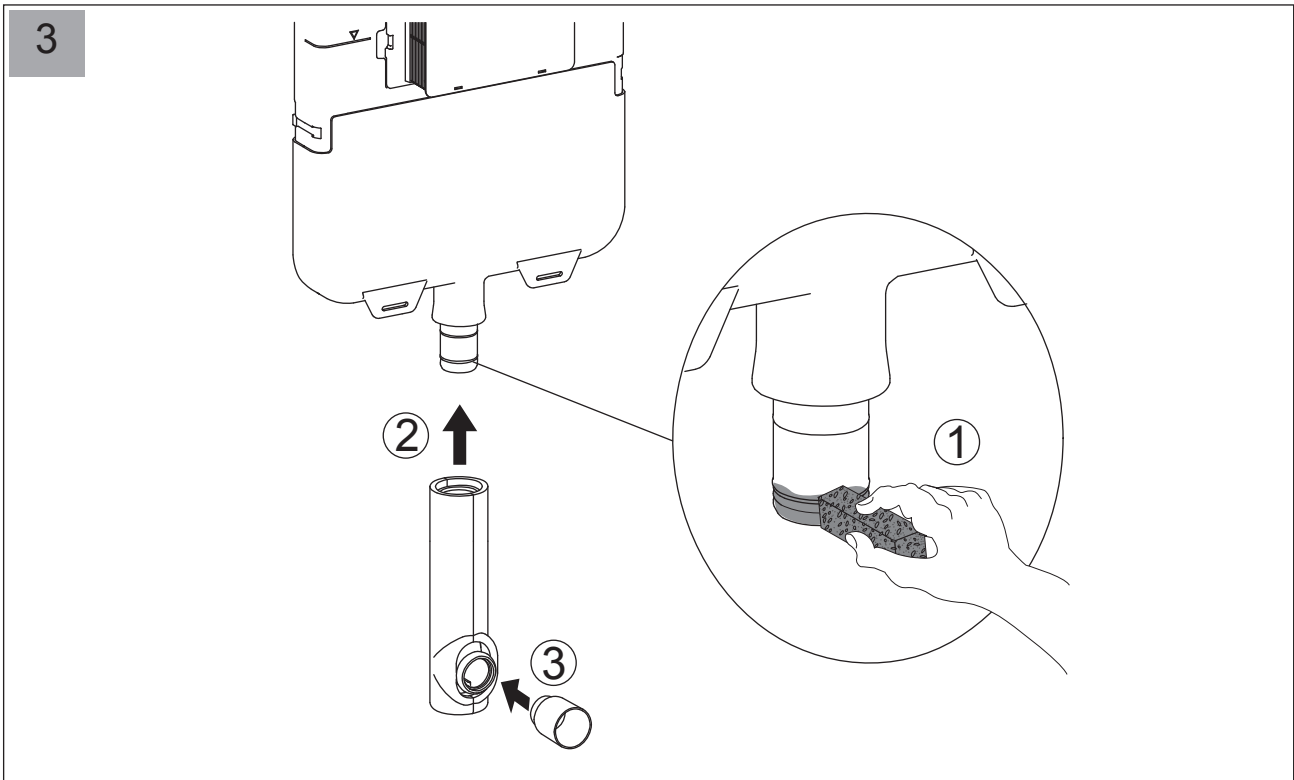
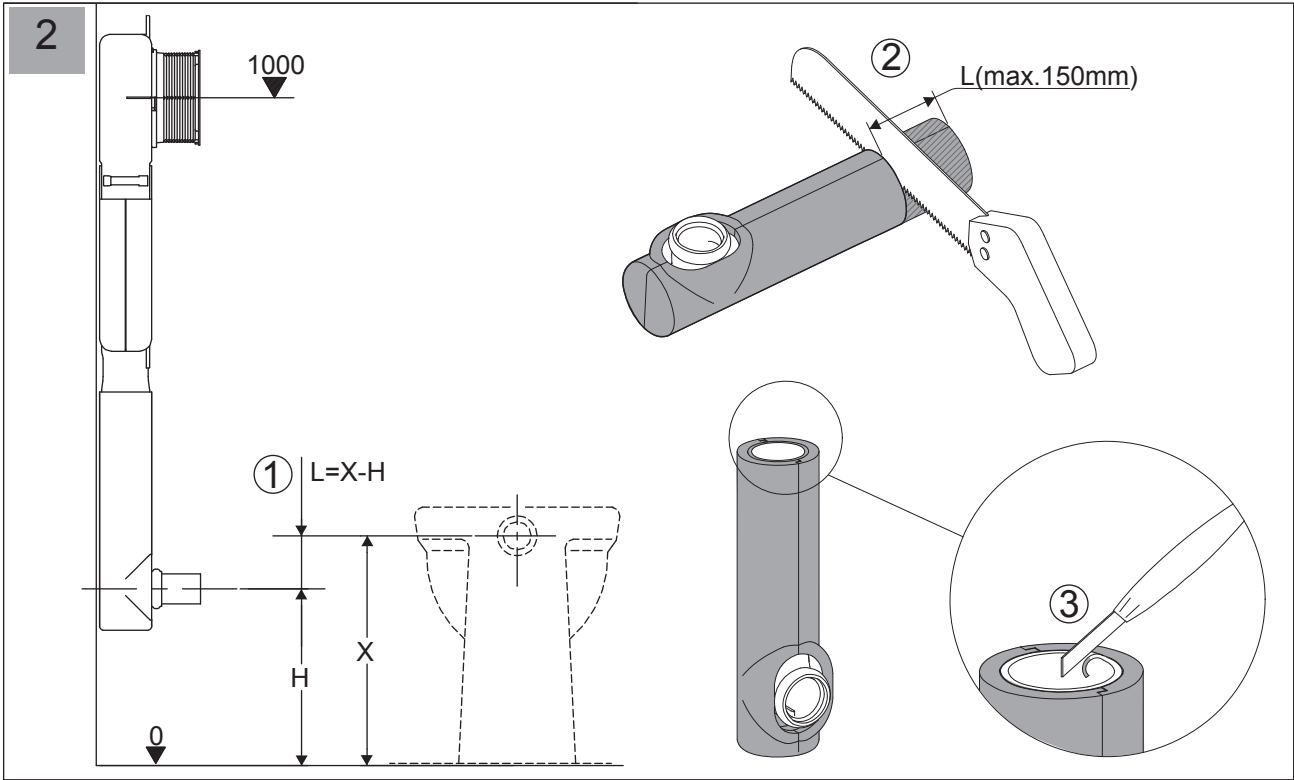


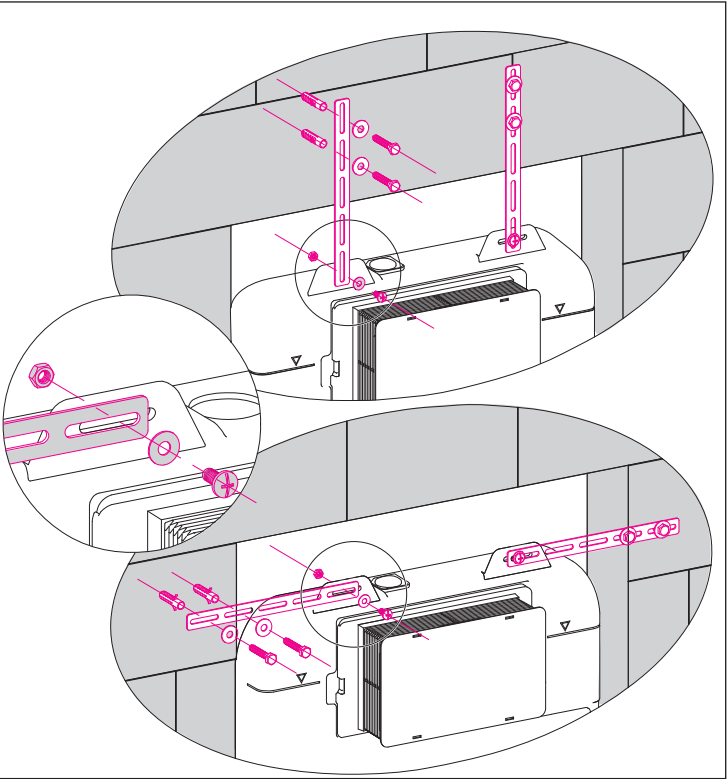
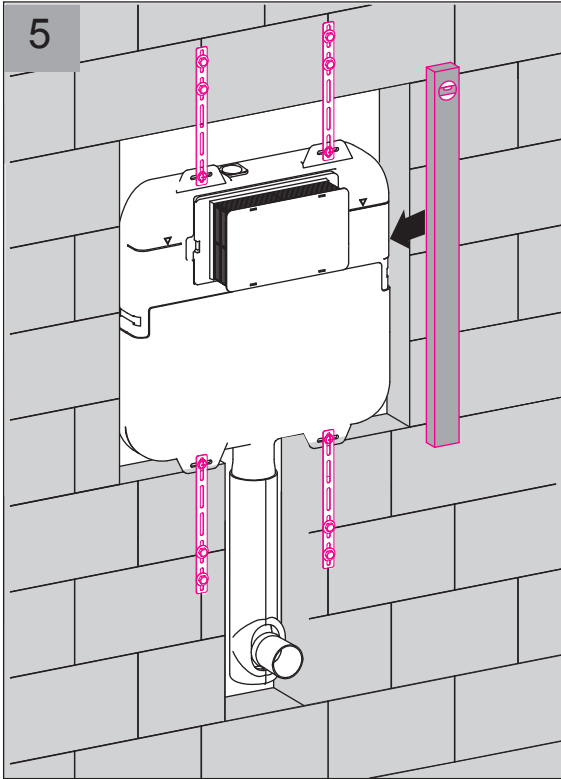
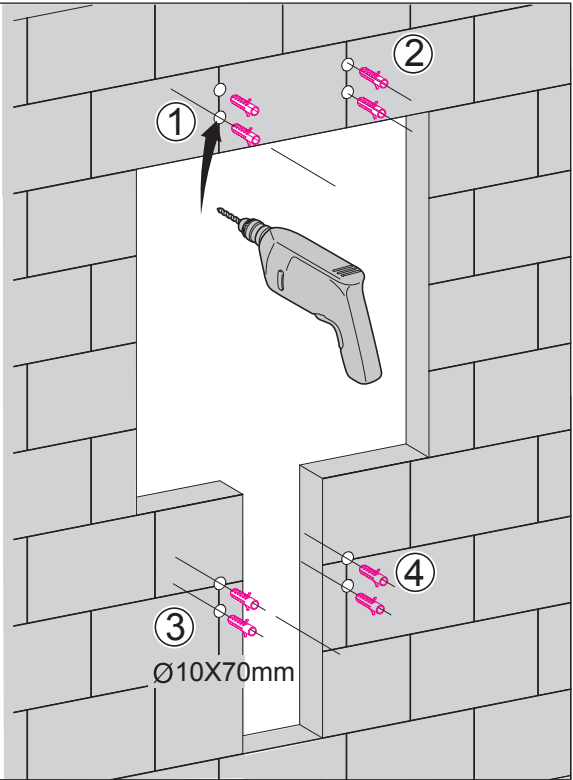
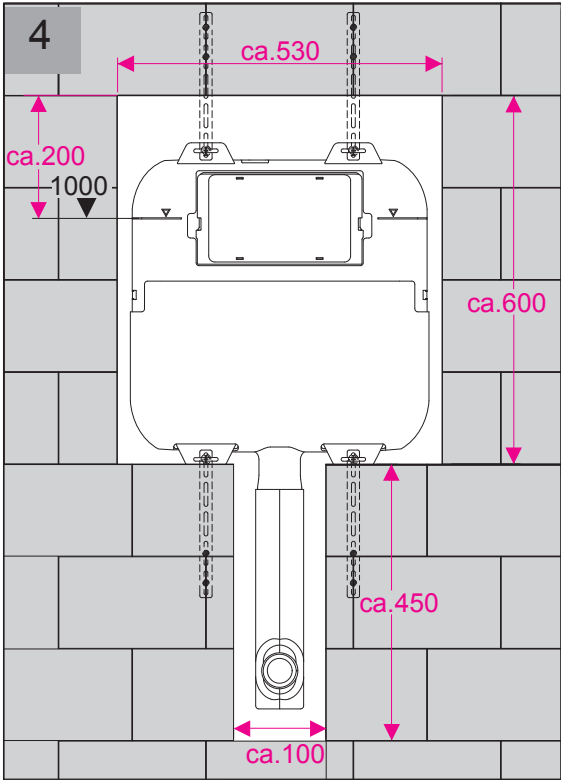
WCC57X46+

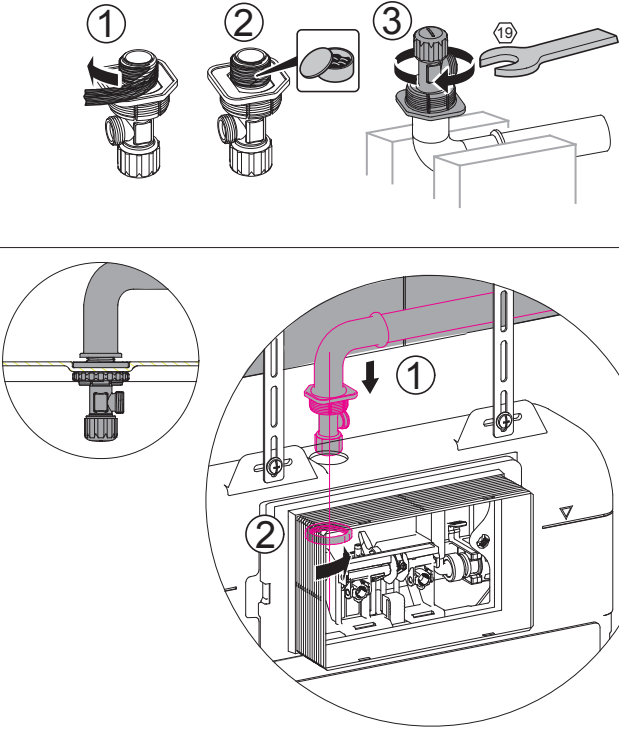
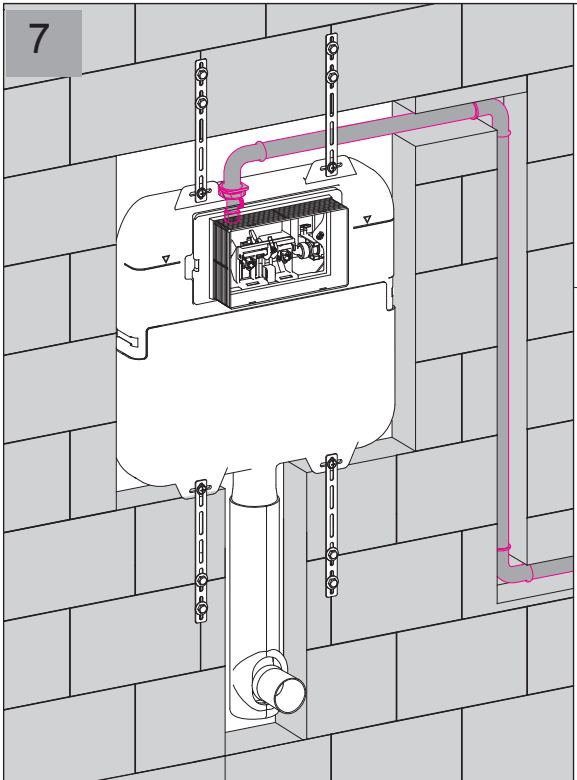
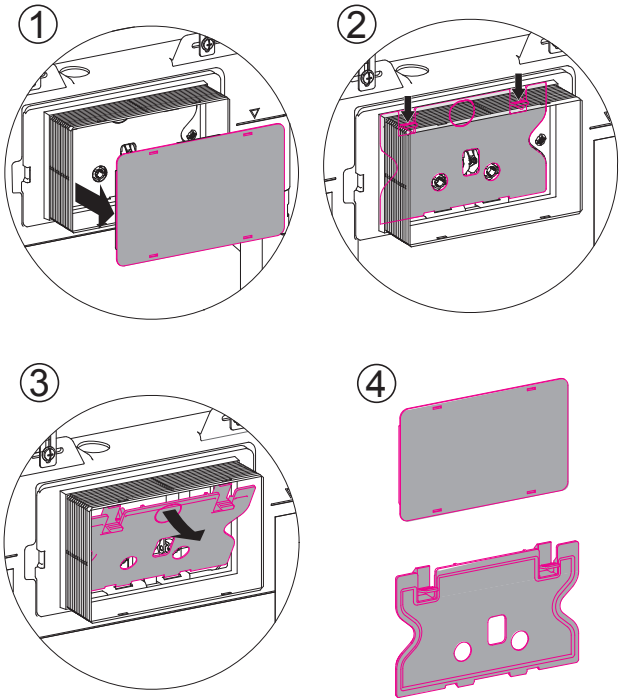
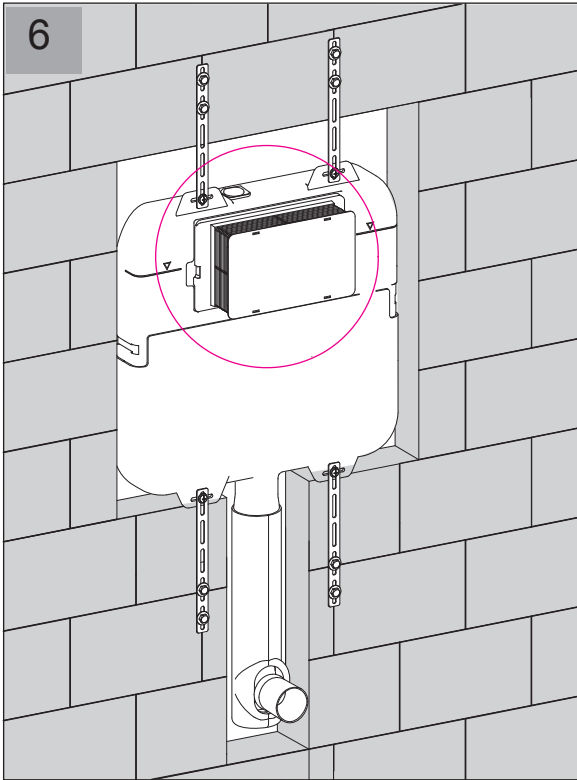


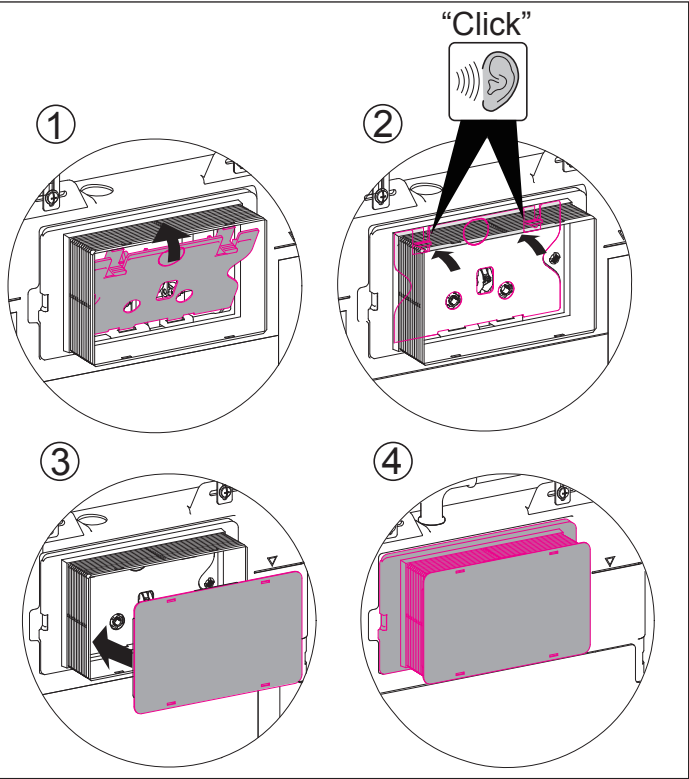
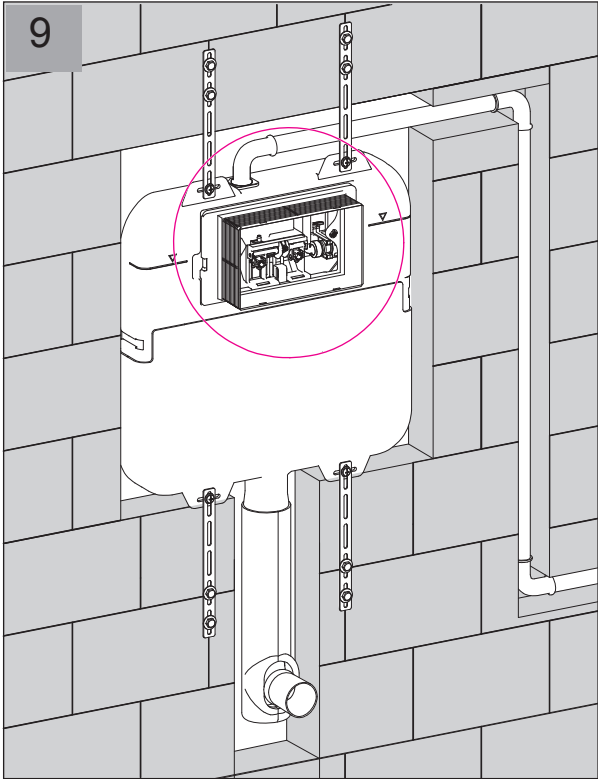
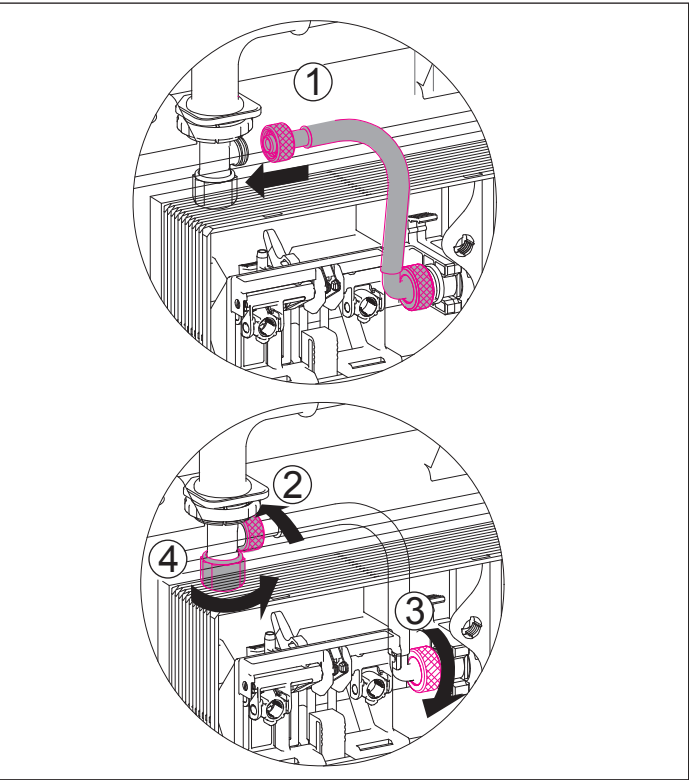
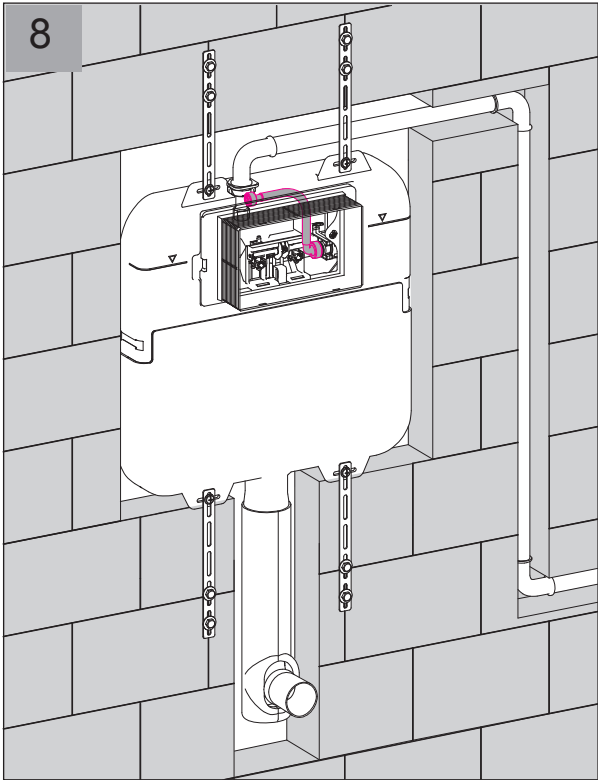
560548-1 16-1.0

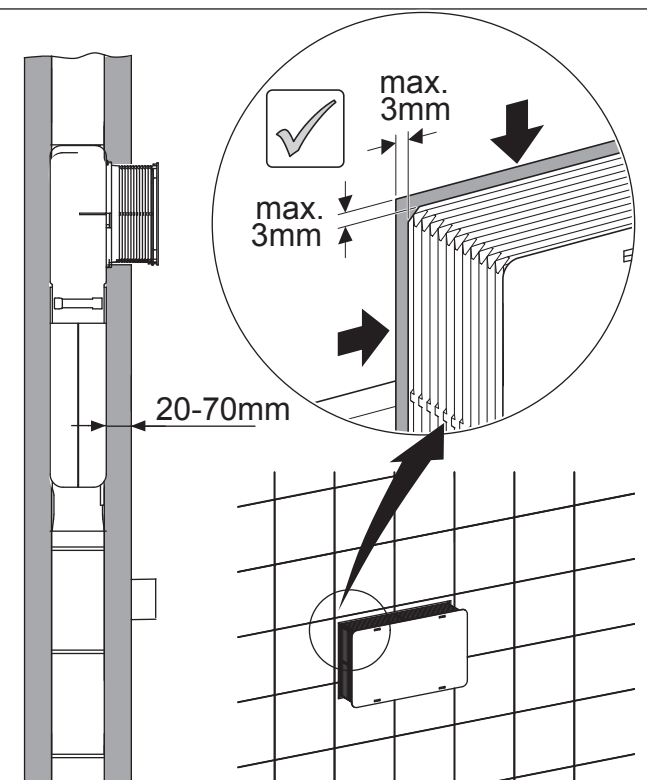
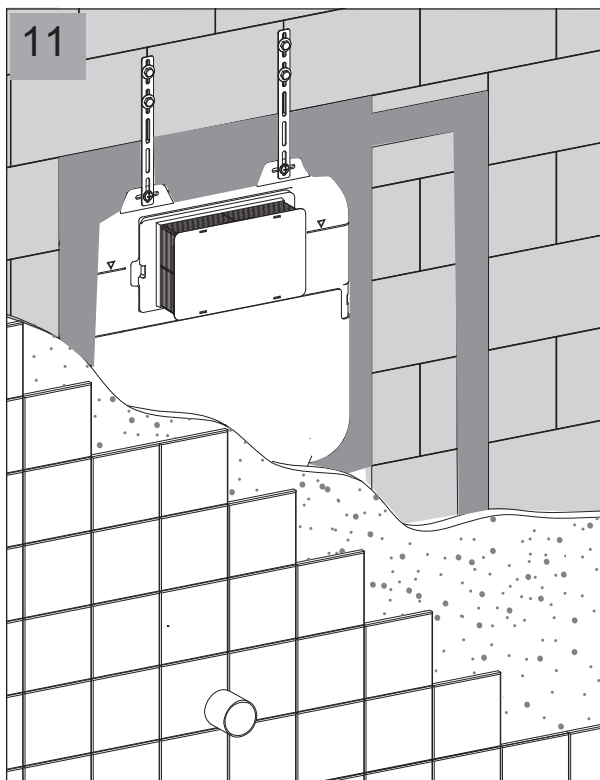
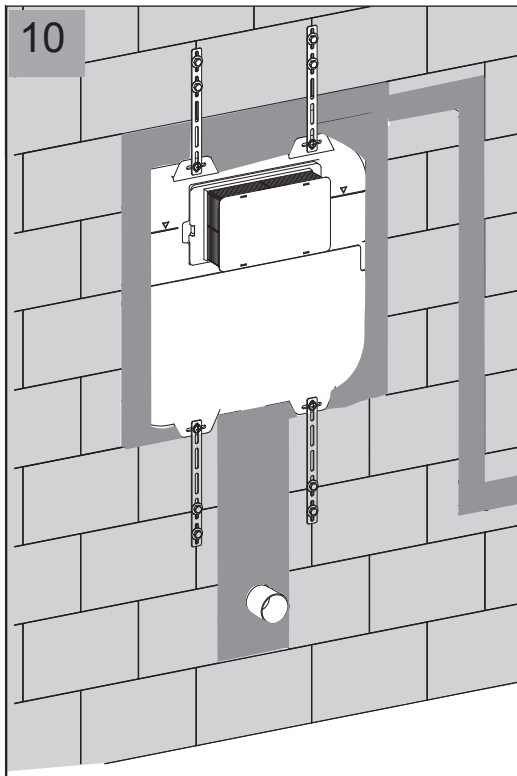


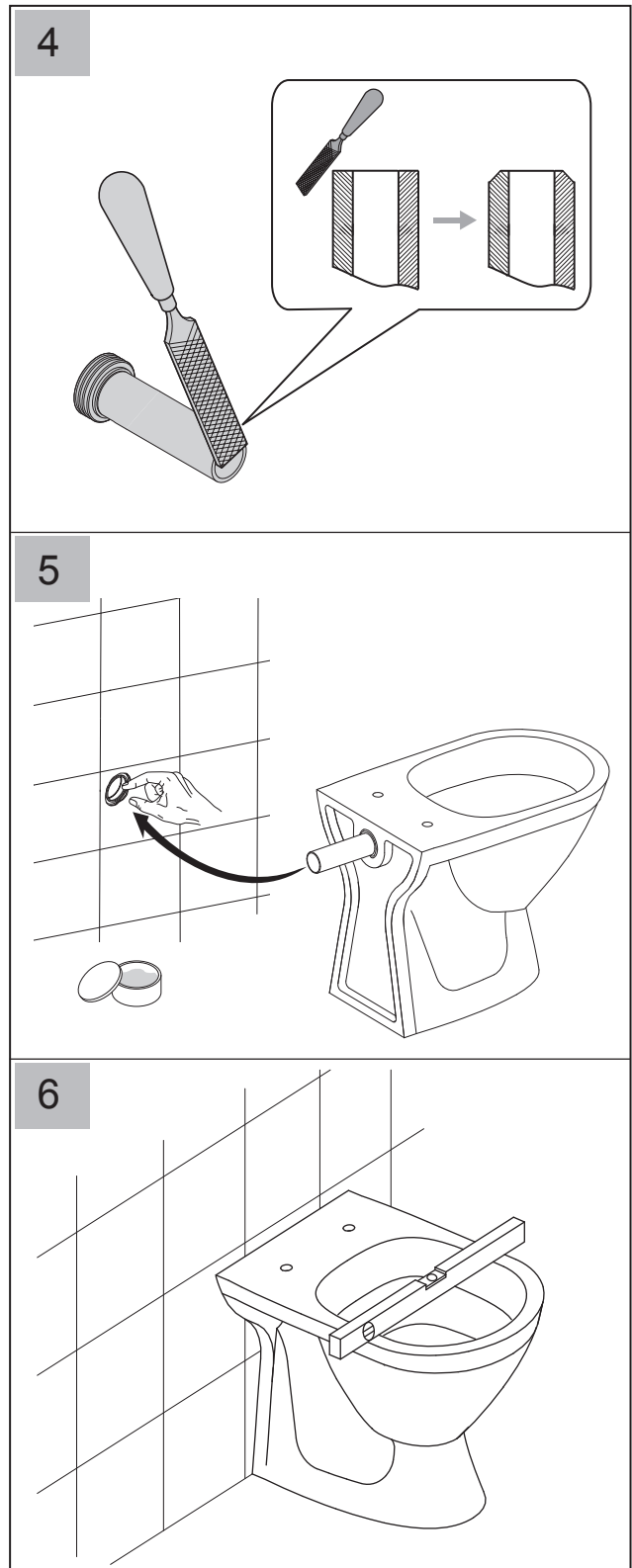
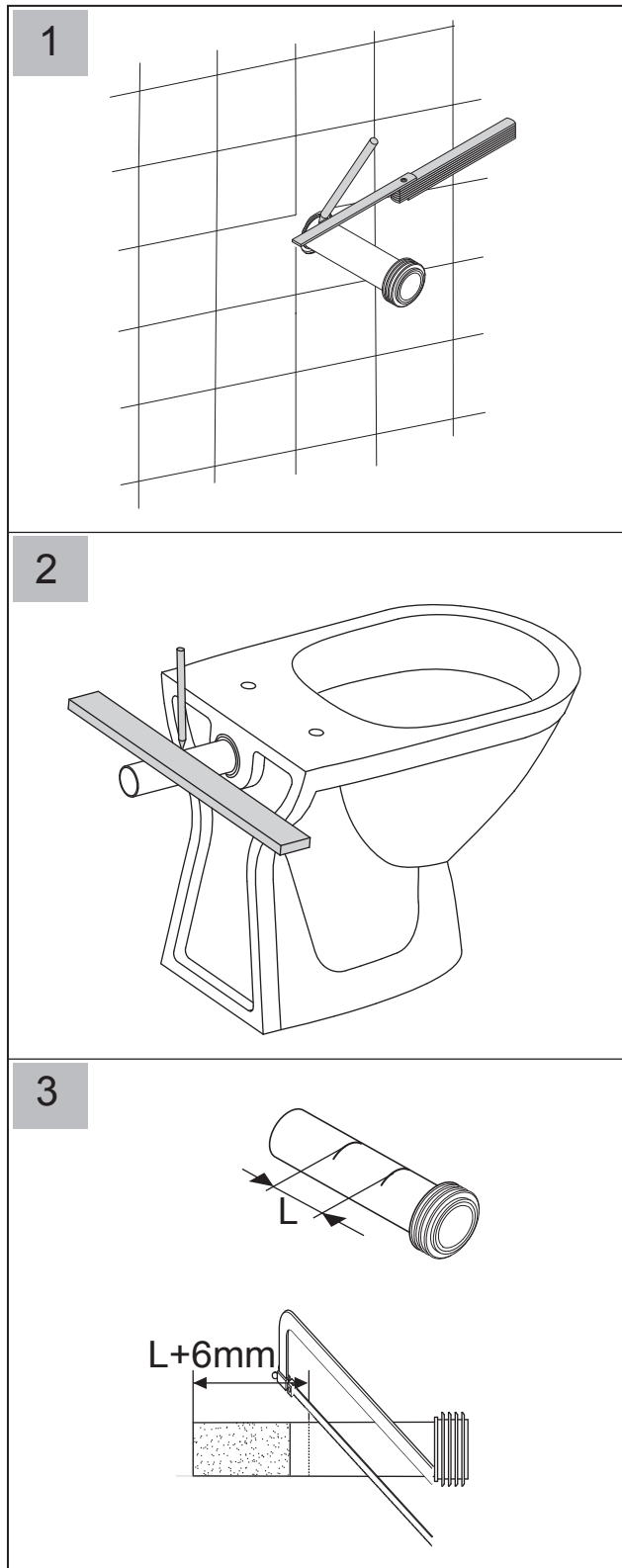












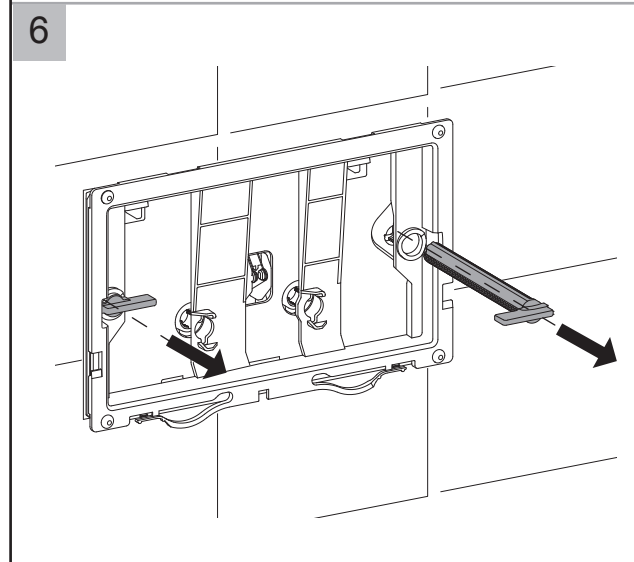
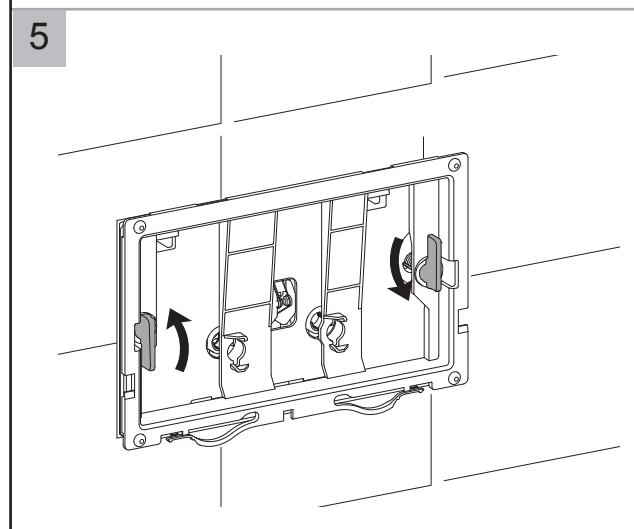
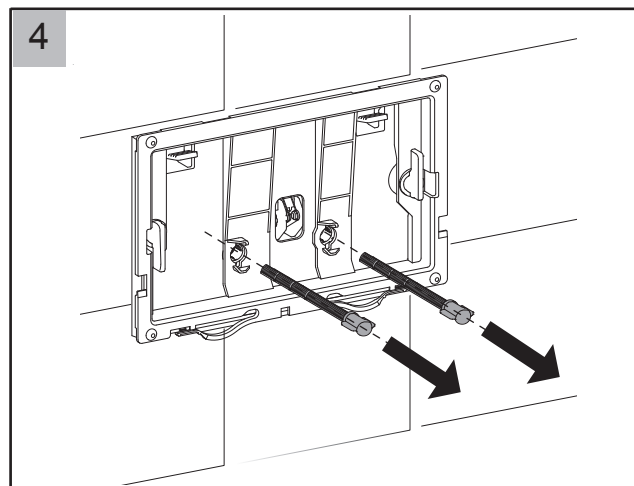
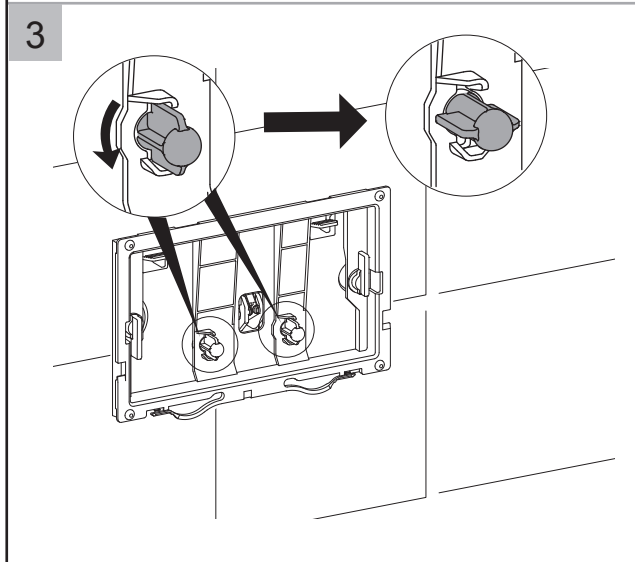
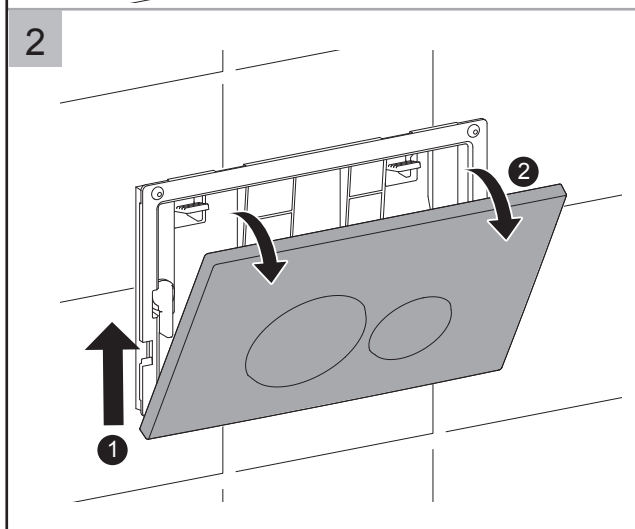
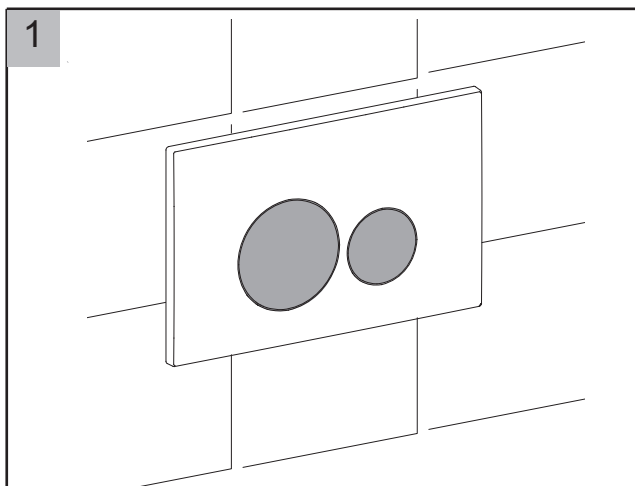
For any further information please contact

Bauhaus on: **0345 873 8840**

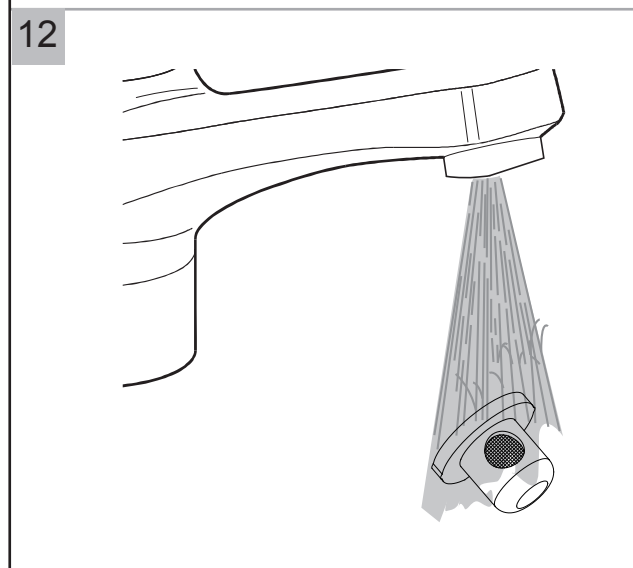
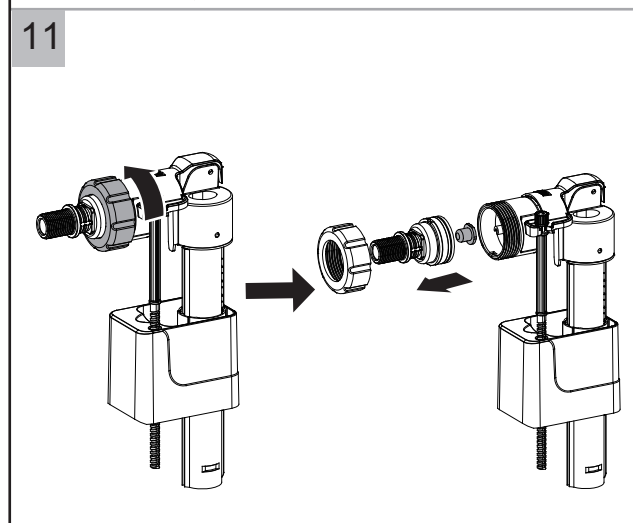
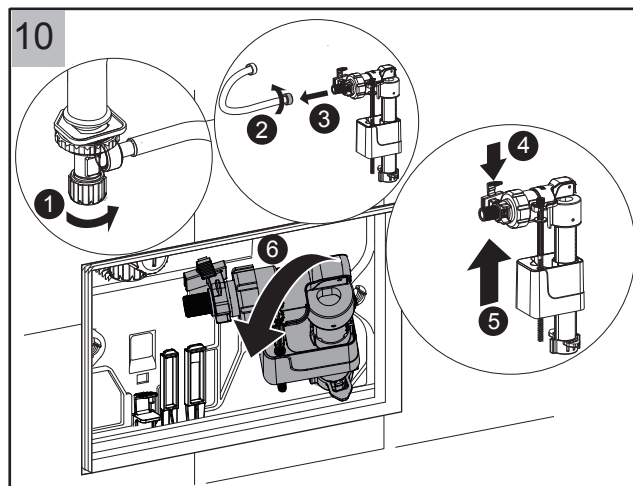
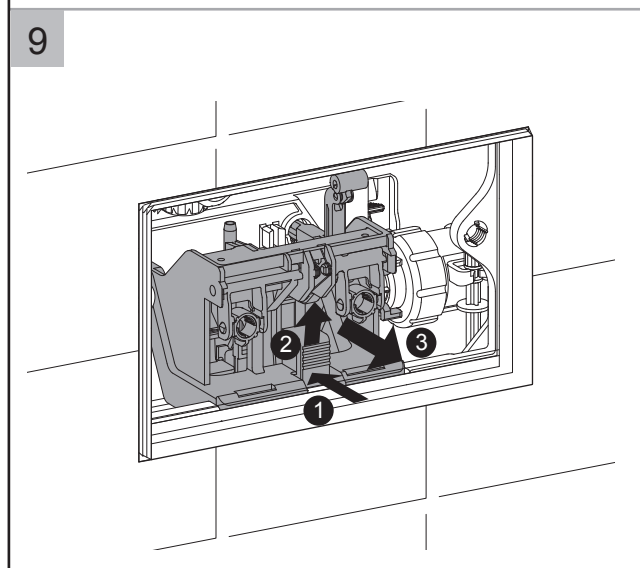
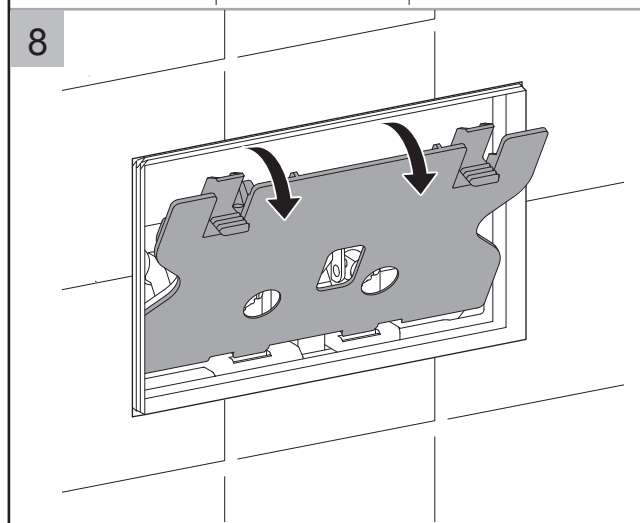
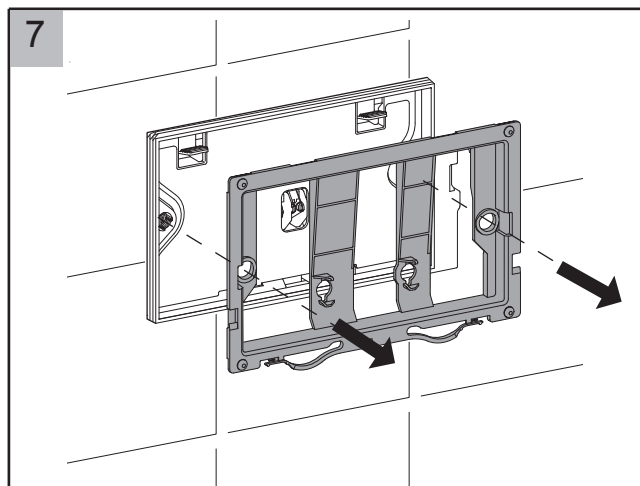
Or visit our web-site at:

www.bauhaus-bathrooms.co.uk

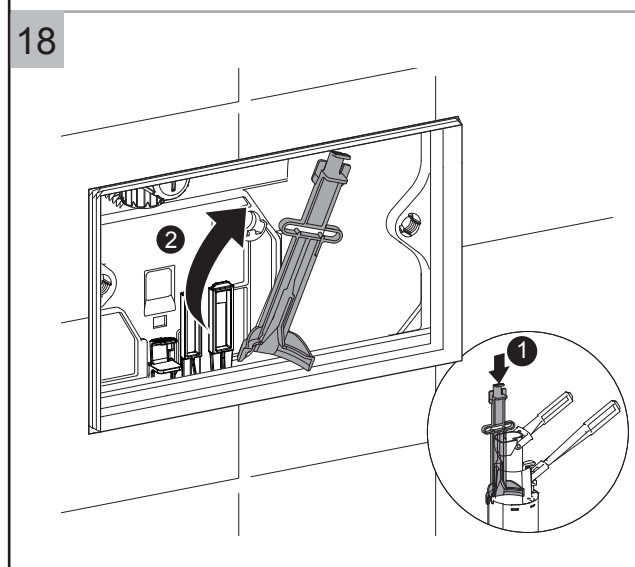
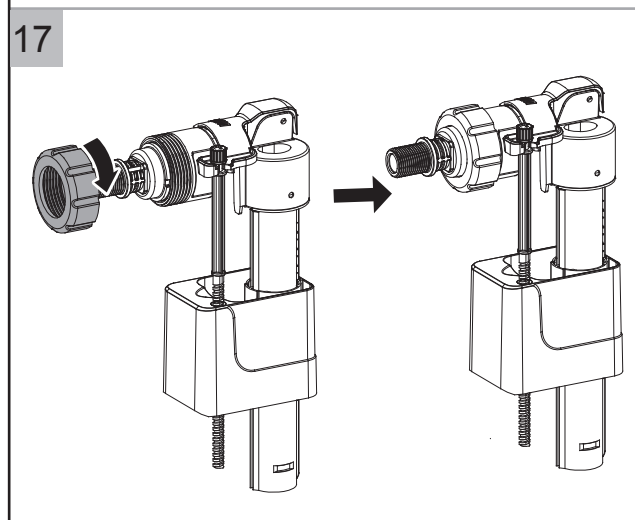
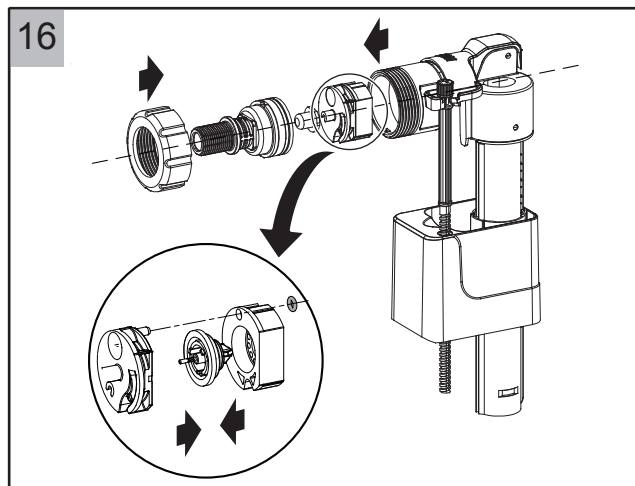
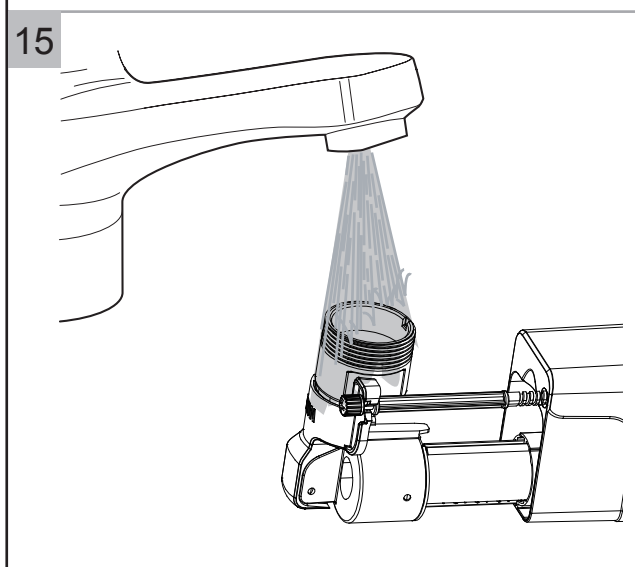
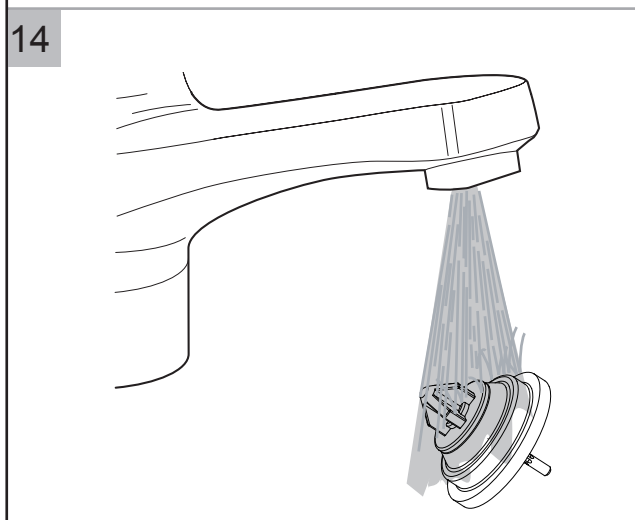
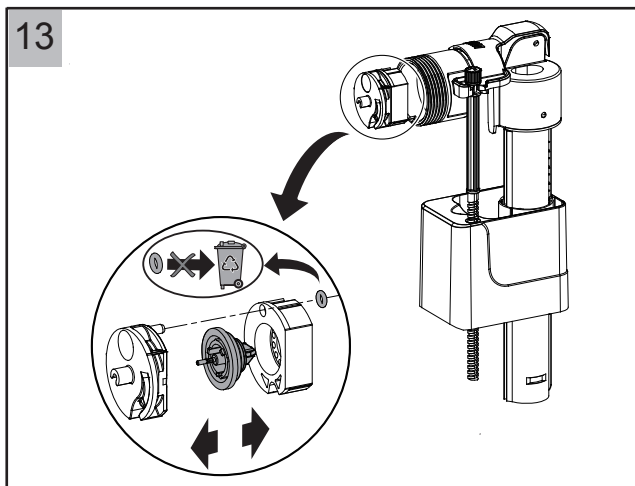
Maintenance for Concealed Cisterns



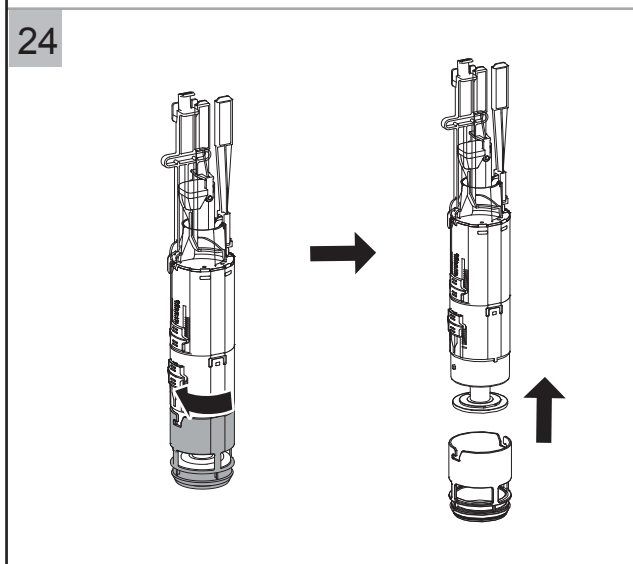
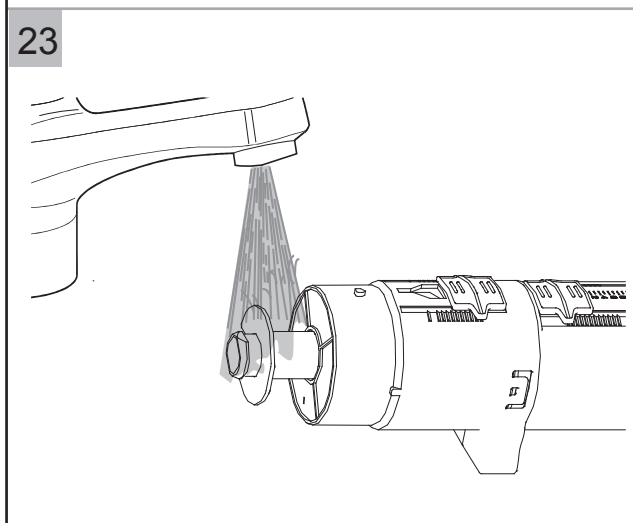
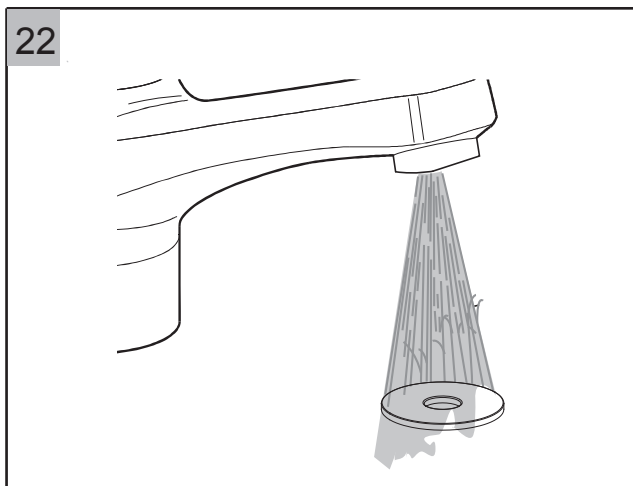
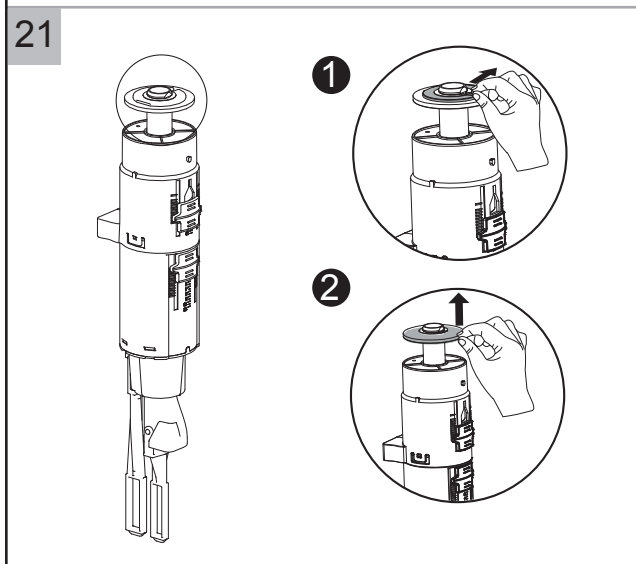
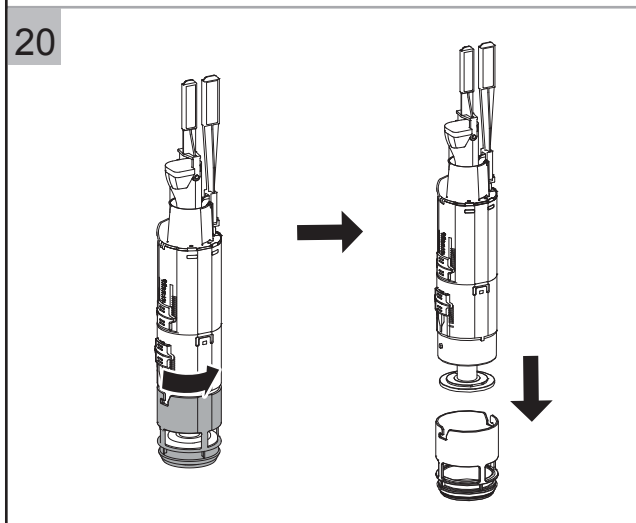
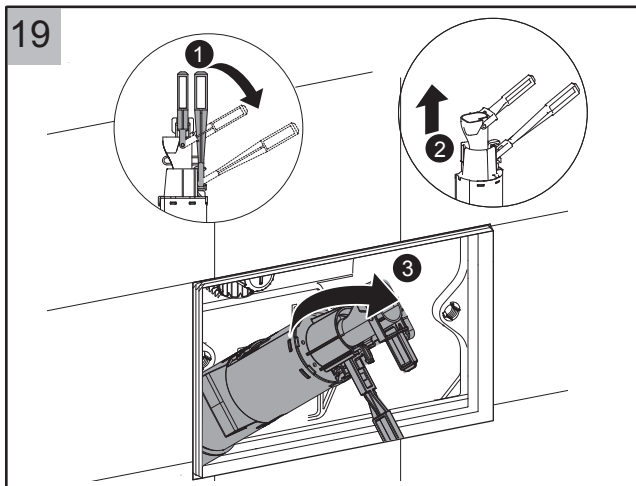
Maintenance for Concealed Cisterns



Maintenance for Concealed Cisterns

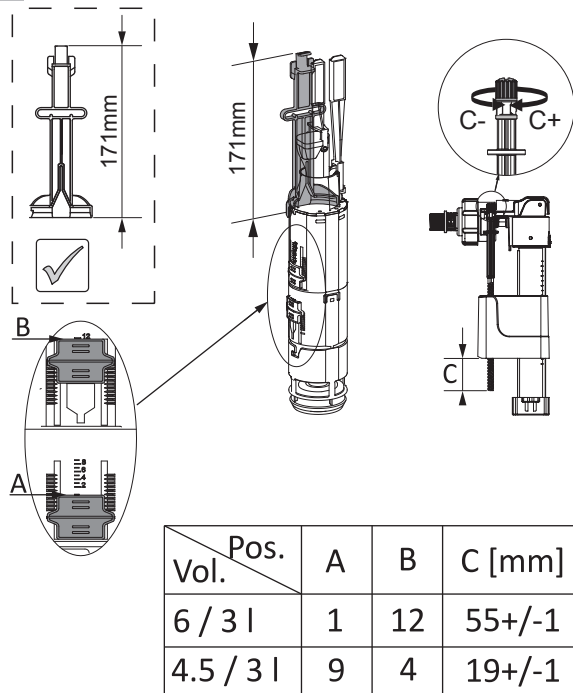


Maintenance for Concealed Cisterns

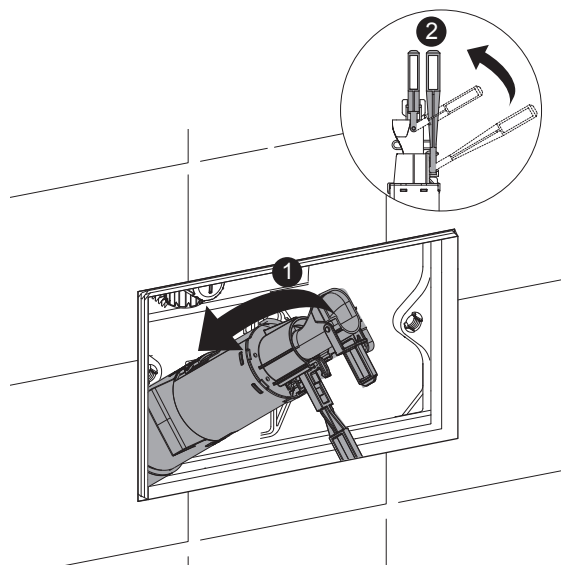


Maintenance for Concealed Cisterns

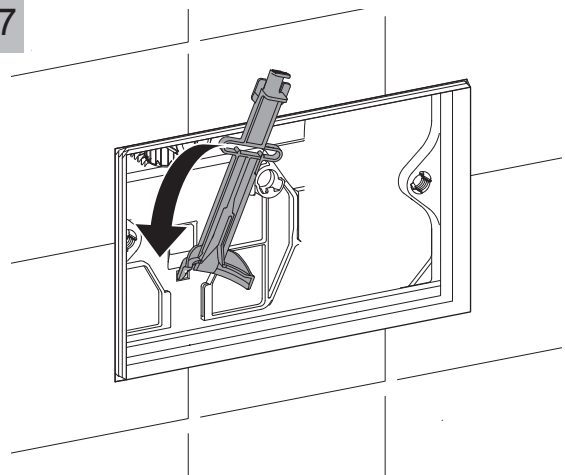
25



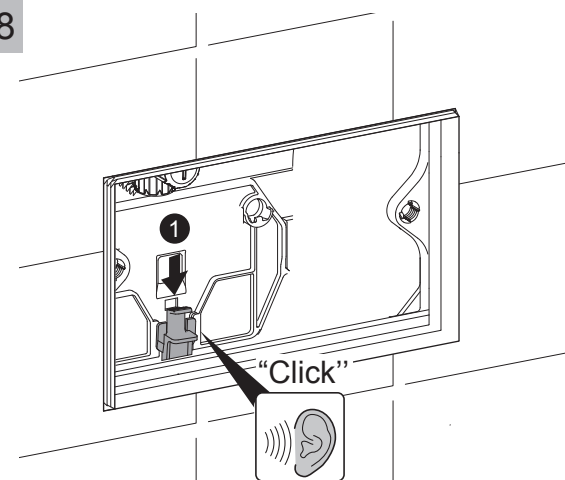
26



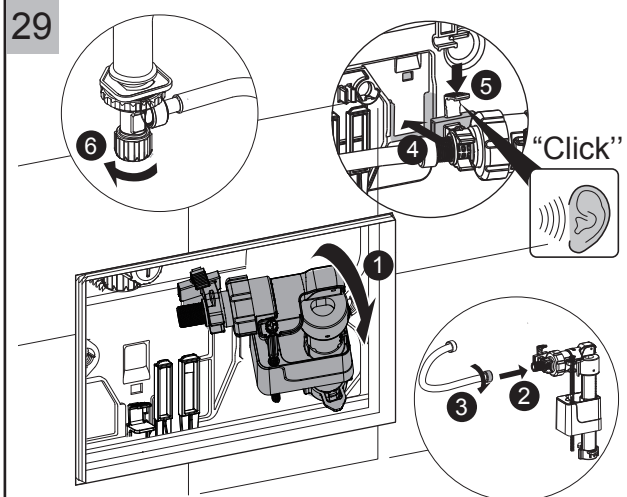
27



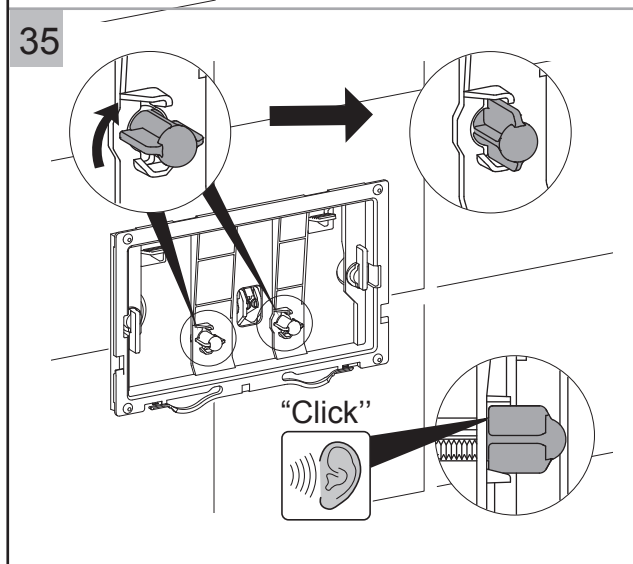
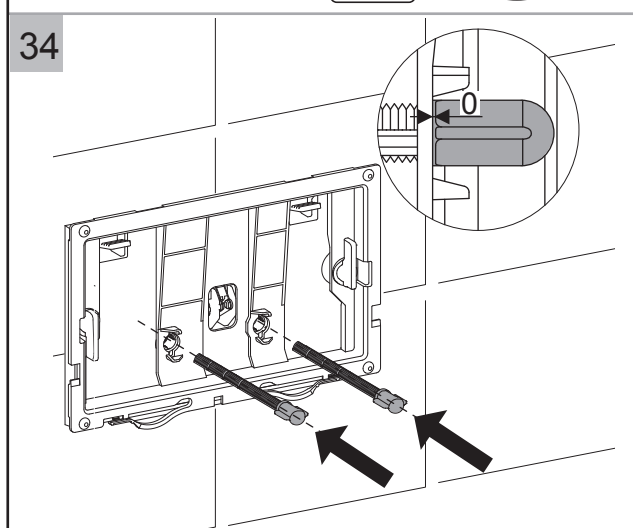
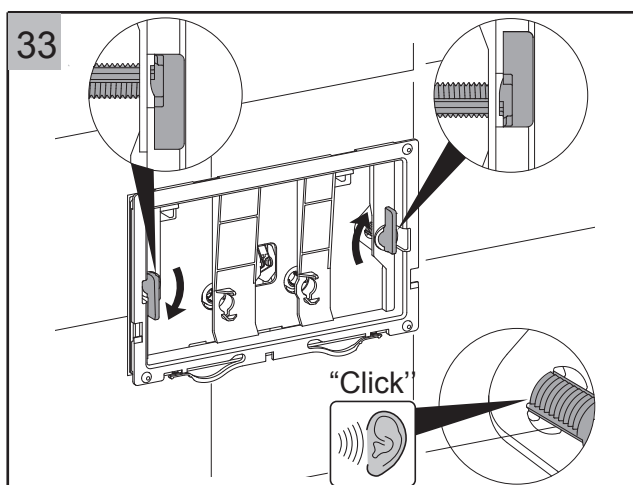
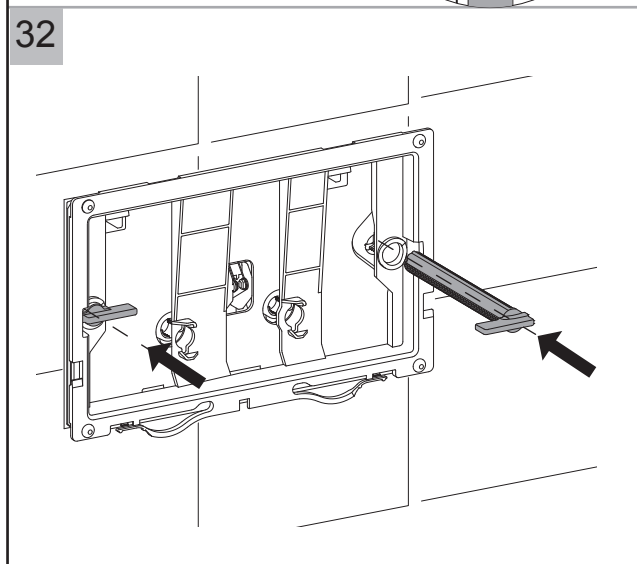
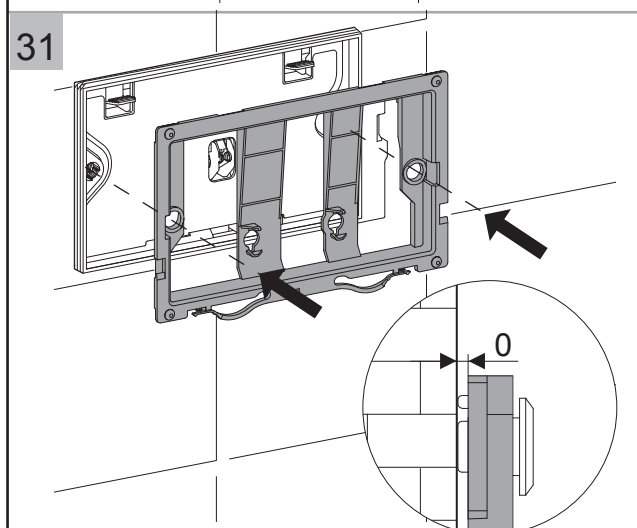
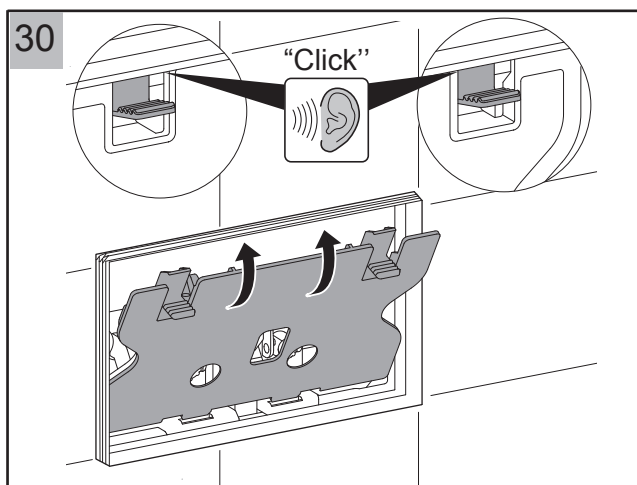
28



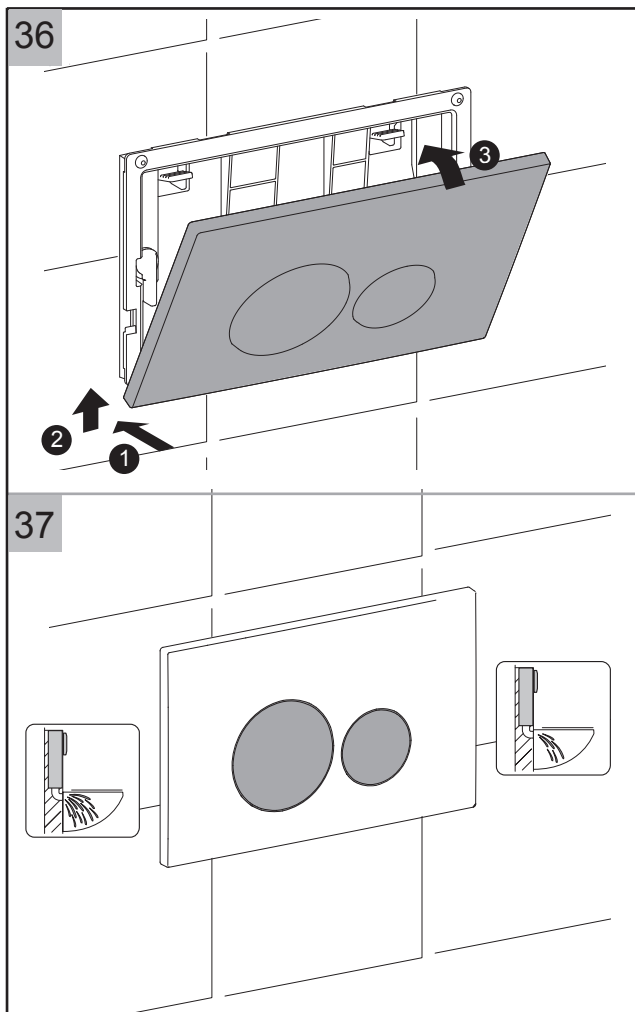
29



Maintenance for Concealed Cisterns



Maintenance for Concealed Cisterns



For any further information please contact

Bauhaus on: **0345 873 8840**

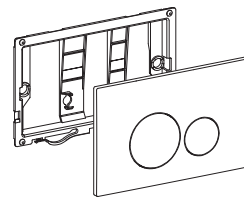
Or visit our web-site at:

www.bauhaus-bathrooms.co.uk

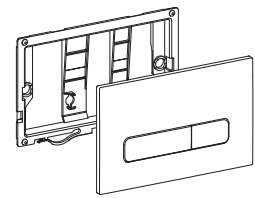
The manufacturer reserves the right to make technical modifications without prior notice.

Installation

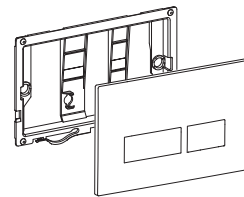
bauhaus^x



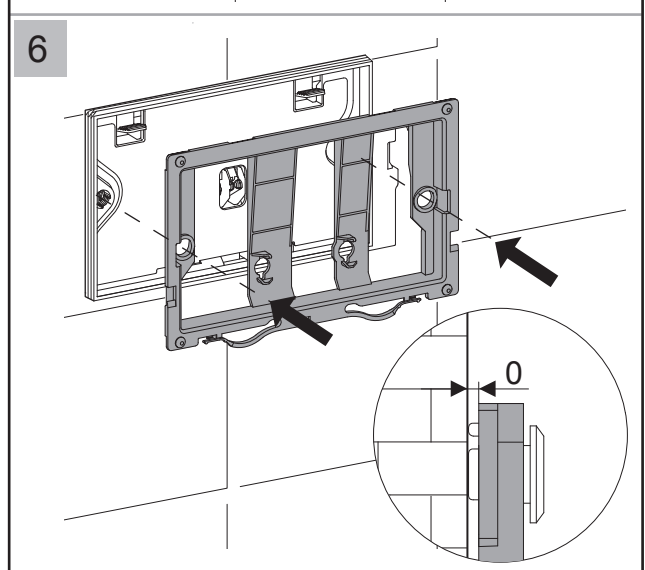
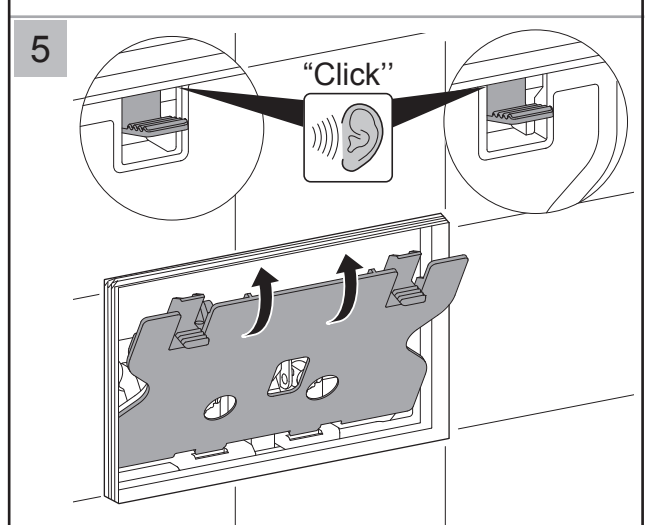
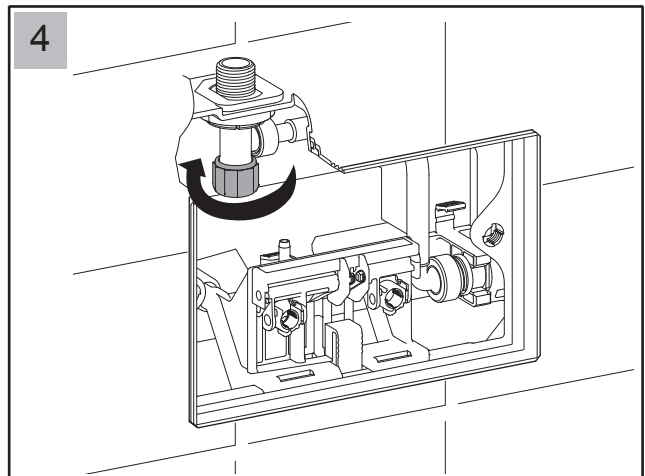
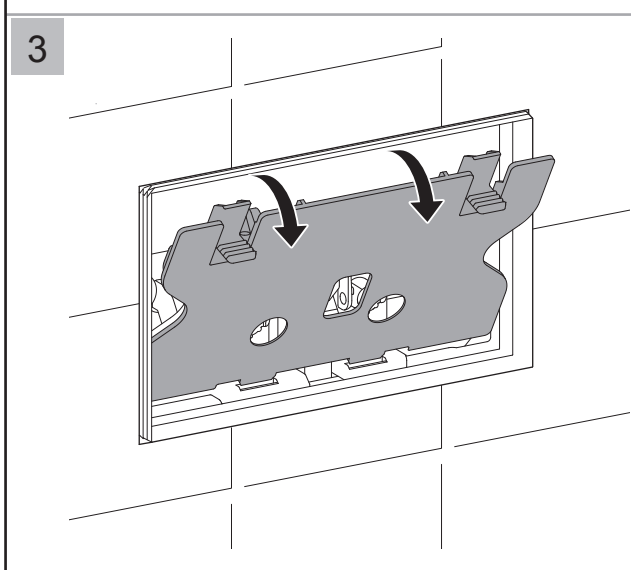
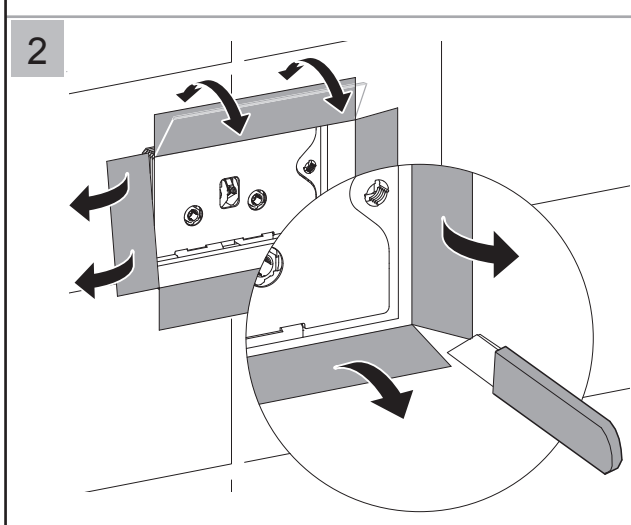
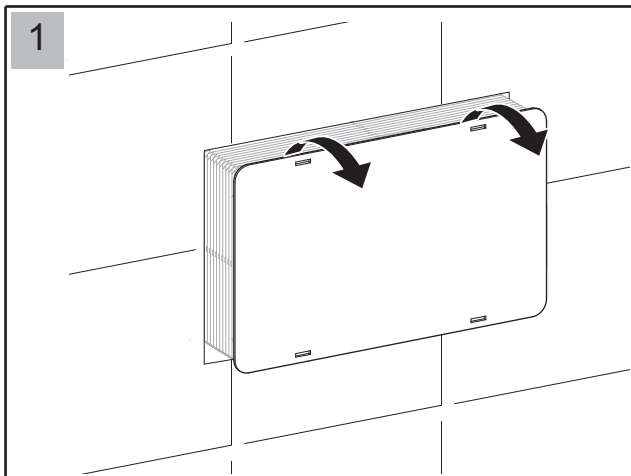
CEFLUSHC+



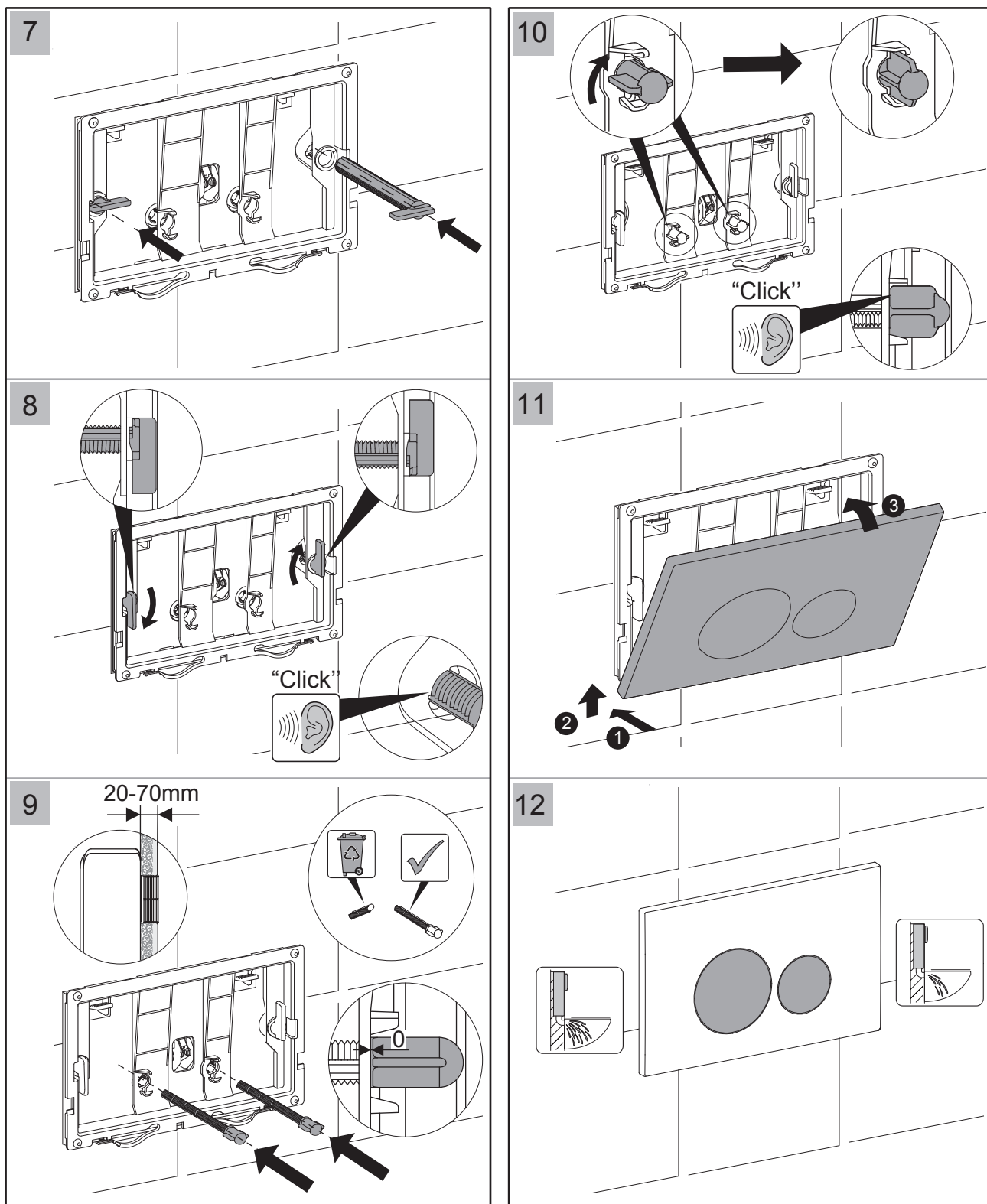
ATFLUSHC



TEFLUSHC+



Installation



For any further information please contact

Bauhaus on: **0345 873 8840**

Or visit our web-site at:

www.bauhaus-bathrooms.co.uk

The manufacturer reserves the right to make technical modifications without prior notice.