

Inlet Valve



Please read these instructions carefully before installation and store safely for future reference.

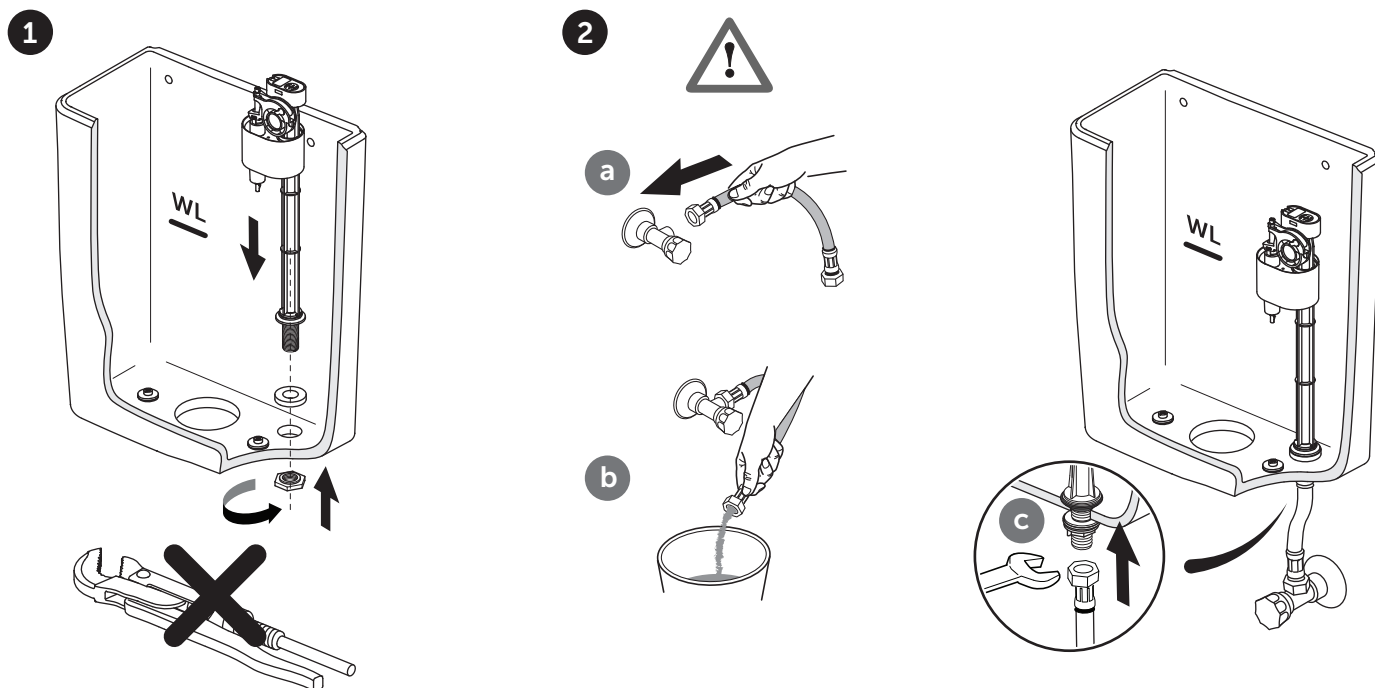
GENERAL NOTES

Before fitting any valve the supply pipe should be flushed clear. This inlet valve operates with supply pressures above 0.1 bar to 10 bar as supplied. It contains a flow restrictor which must be removed for pressures of 0.2 bar & lower to a minimum of 0.1 bar. Take care to avoid cross threading. Hand tighten nuts, then give 1/8 turn by spanner. Do not overtighten. The valve is fully tested before leaving the factory, no dismantling is necessary.

Chemicals & paints

Do not allow the inlet valve to come into contact with jointing compounds, cellulose based paints, paint thinners or strippers, solder flux, acid based descalents or aggressive cleaning products including those below pH4, high in hypochlorite (e.g. bleach) or containing hydrogen peroxide or chlorine and any chemically related products, as this may cause damage to cistern components and may cause flooding and property damage.

INSTALLATION



Float adjustment

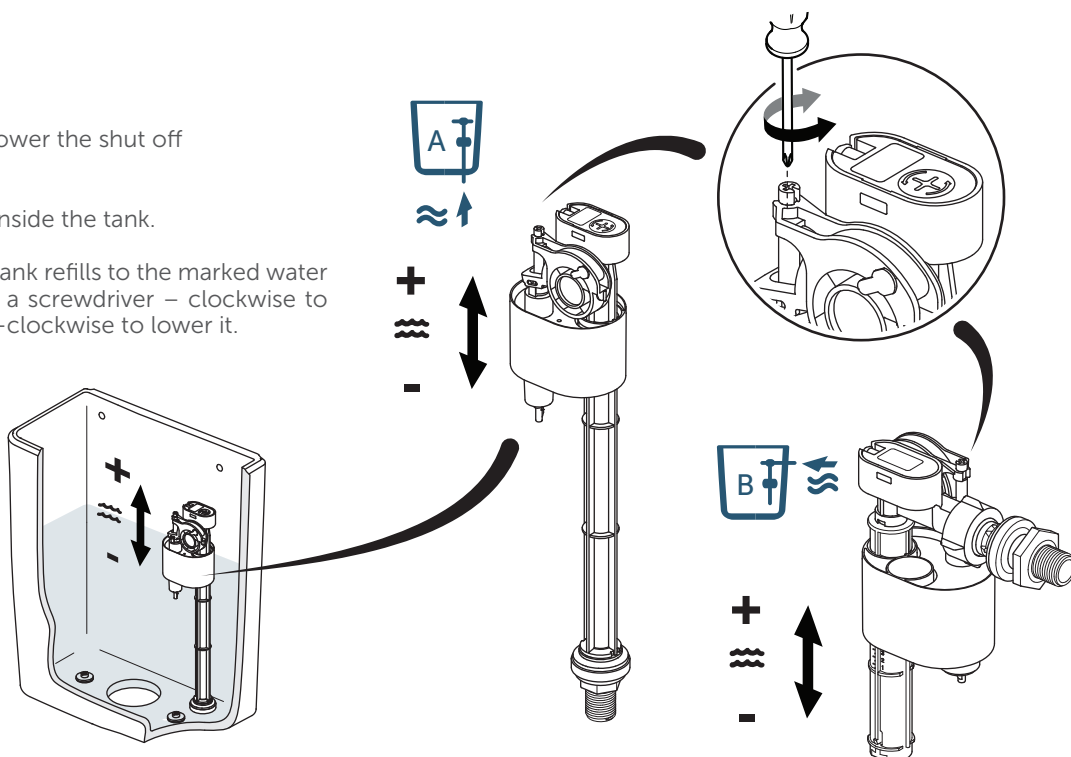
Use a screwdriver to raise and lower the shut off float assembly.

Look for the marked waterline inside the tank.

Flush the tank and check if the tank refills to the marked water line, if not rotate the stalk with a screwdriver – clockwise to raise the shut off point and anti-clockwise to lower it.

Flow restrictor

See next page.



MAINTENANCE

Valves should be checked and cleaned periodically. The inlet valve is fitted with a filter to prevent foreign bodies from impeding the flow. The filter may require occasional cleaning.

Turn off water.

Disassemble the valve as show on the instruction. Use screw-driver if necessary. Carefully remove filter from the valve. Clean the filter. Wash away any foreign matter and check for damage. Replace the filter if necessary. Replace the filter in to position and re-assemble.

Turn water on and check all connections for leaks. Check that the inlet valve float shuts off at the waterline marked inside the cistern. To adjust, turn the top of the float stalk.

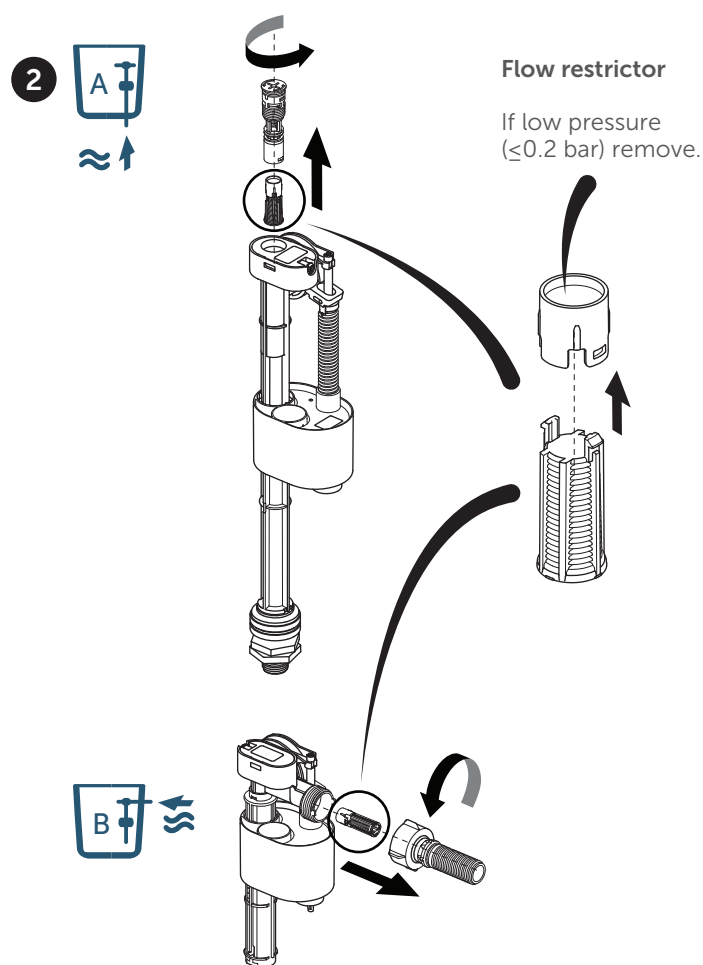
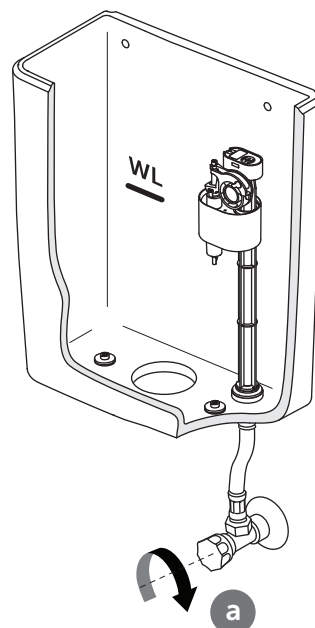


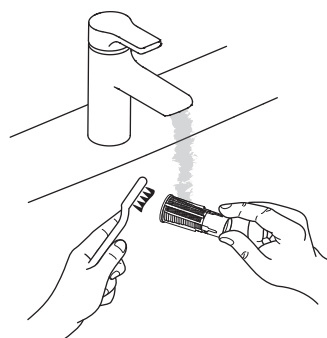
Illustration may not reflect item as supplied.

All cistern components must be installed in accordance with UK water regulations. If in doubt please consult a suitably qualified professional.

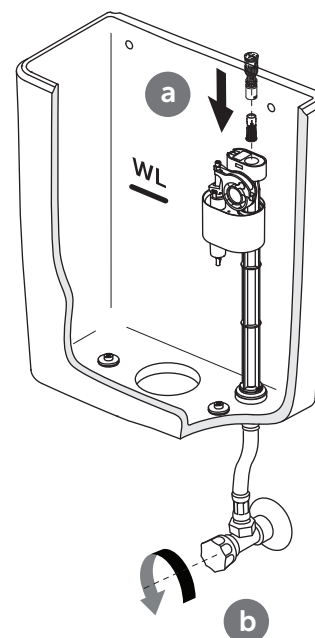
1



3



4



CUSTOMER CARE HELPLINE

01482 496318

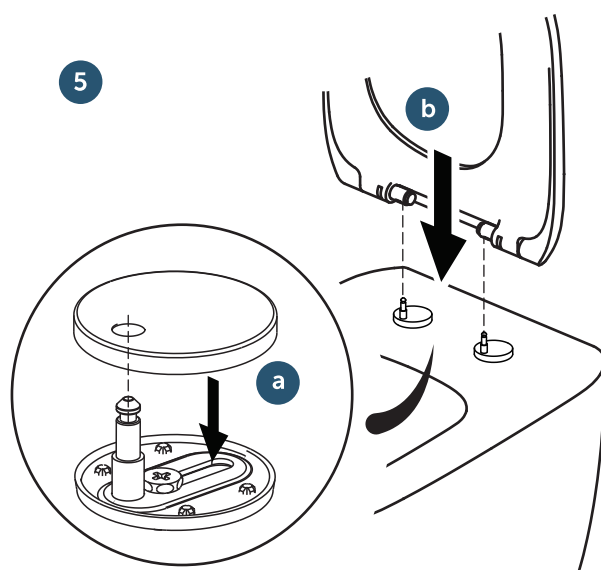
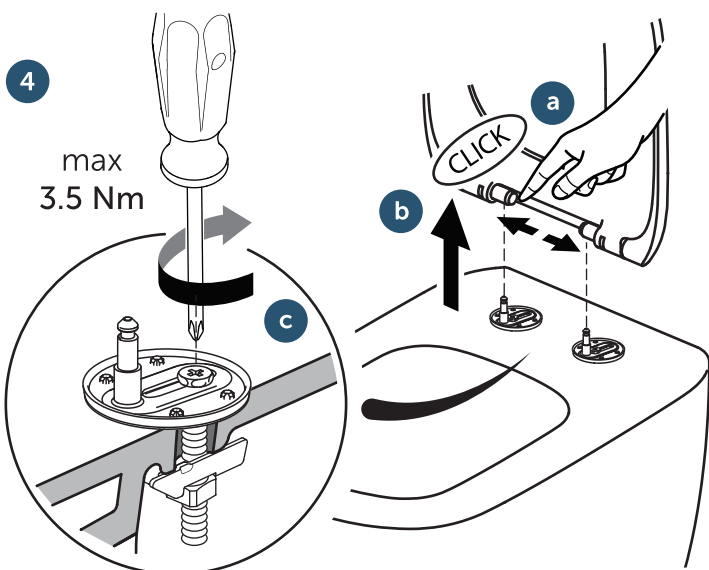
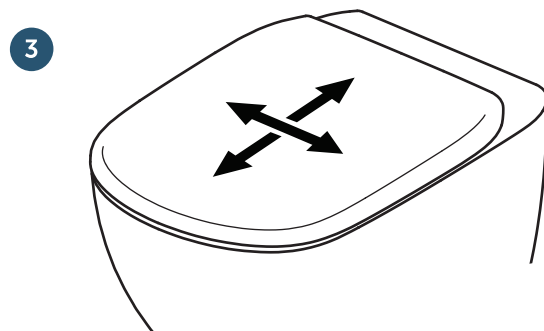
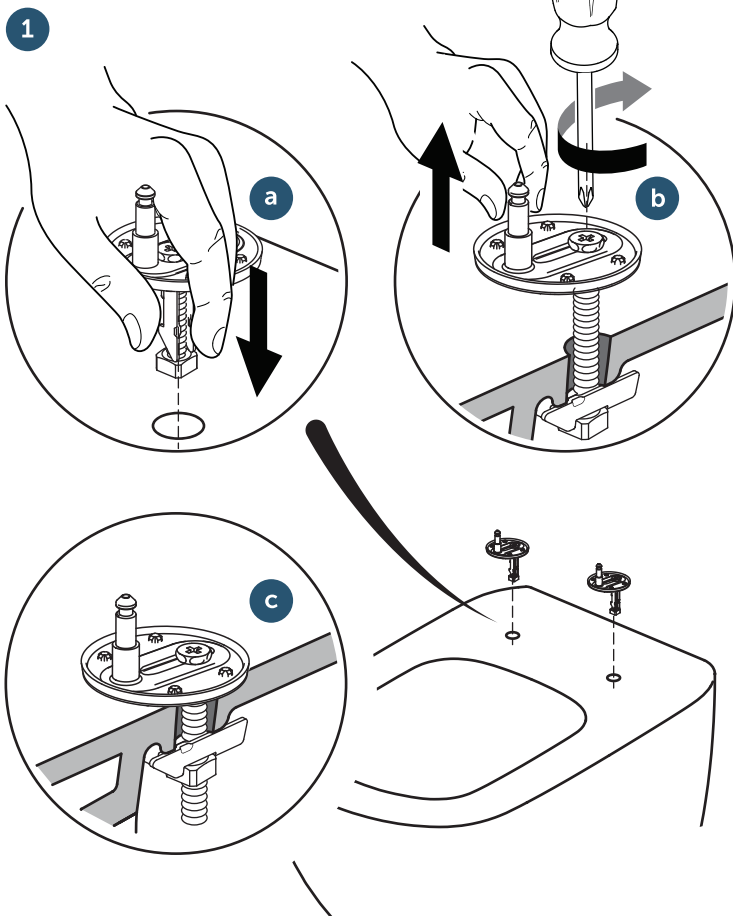
FAX LINE 01482 499611
email: customer care@idealstandard.com

WW10002167
ver. 1/11.22

BS15i A



Installation - Installazione - Installation - Montage - Instalación - Montering - Монтаж
 Montáž - Paigaldamine - Εγκατάσταση - Beszerelés - Montavimas - Montáža - Instalare
 Инсталација - Montaž - Установка - Montaža - Montáž - Montaj - Інсталяція



Ideal Standard International NV
 Corporate Village – Gent Building
 Da Vincilaan 2
 B1935 – Zaventem
 Belgium

BE +32 (02) 325 66 33
 BG +359 675 30362
 DE +49 (0)228 521 580
 EG +202 26969700
 FR +33 (0)1 49 38 28 00
 GB 0870 129 6085

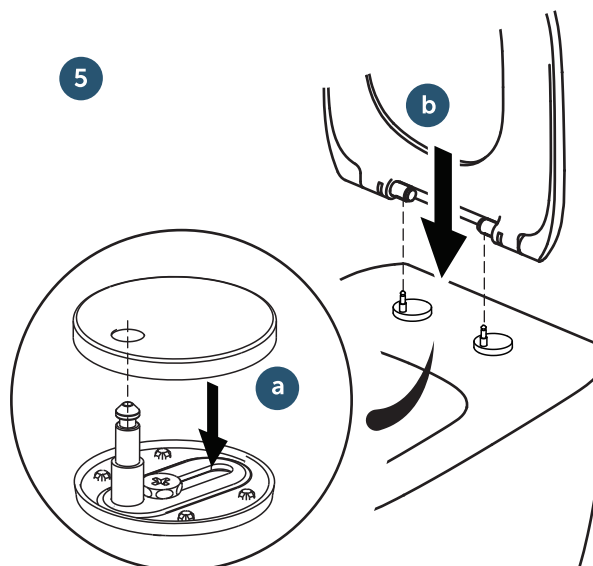
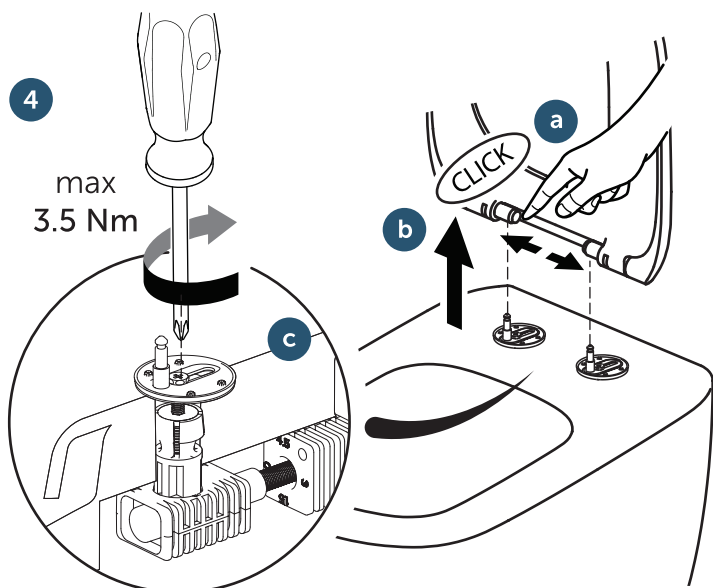
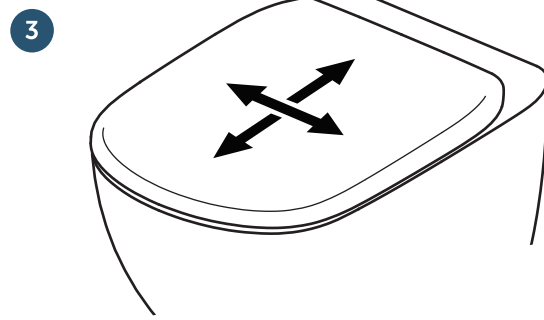
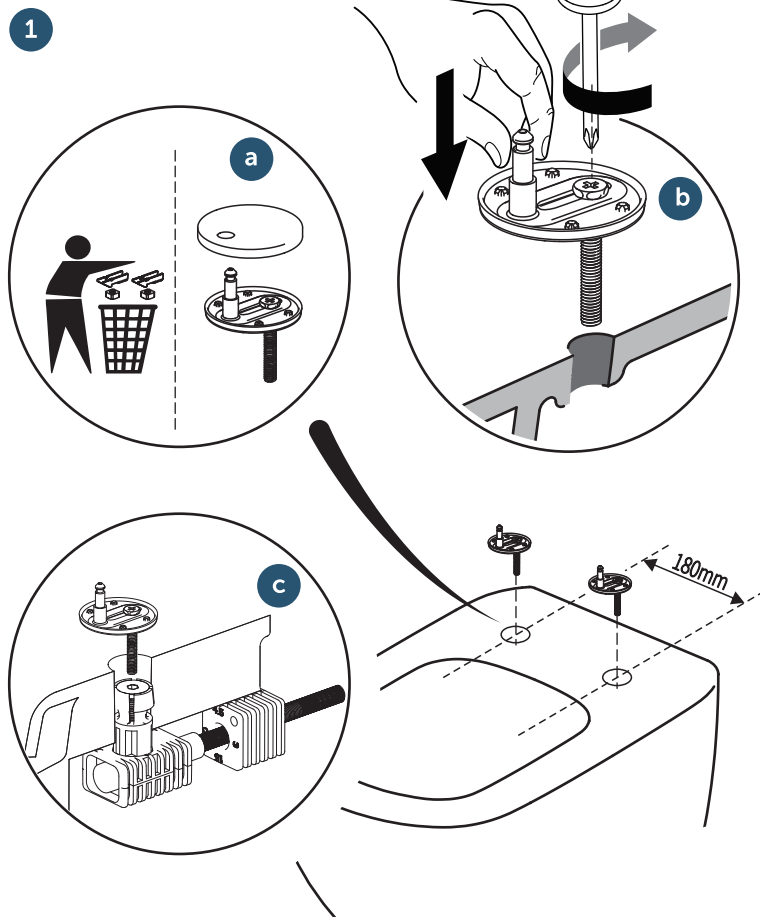
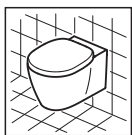
GR +30 210 67 90 810
 HR +38591 22 99 304
 HU +36 30 6991 594
 IT 800 652 290
 ME +971 4 804 2400
 NL +31 (077) 355 08 08

PL +48 71 7868 301/302
 RO +40 21 3223 201/202
 SI 00386 59 919040
 TR +90 216 314 87 87
 UA +359 675 30468
 AL/XK/BA +359 887 709 696

CZ/SK +420 417 592 179
 DK/NO/SE +45 75 84 10 10
 ES/PT +34 93 561 80 00
 LV/LT/EE +371 673 57 792
 RS/MK/ME +381 11 713 80 58
 RU/MD +7 495 669 23 11

BS15i B

Installation - Installazione - Installation - Montage - Instalación - Montering - Монтаж
 Montáž - Paigaldamine - Εγκατάσταση - Beszerelés - Montavimas - Montāža - Instalare
 Инсталација - Montaž - Установка - Montaža - Montáž - Montaj - Інсталяція



Ideal Standard International NV
 Corporate Village – Gent Building
 Da Vincilaan 2
 B1935 – Zaventem
 Belgium

BE +32 (0)2 325 66 33
 BG +359 675 30362
 DE +49 (0)228 521 580
 EG +202 26969700
 FR +33 (0)1 49 38 28 00
 GB 0870 129 6085

GR +30 210 67 90 810
 HR +38591 22 99 304
 HU +36 30 6991 594
 IT 800 652 290
 ME +971 4 804 2400
 NL +31 (0)77 355 08 08

PL +48 71 7868 301/302
 RO +40 21 3223 201/202
 SI 00386 59 919040
 TR +90 216 314 87 87
 UA +359 675 30468
 AL/XK/BA +359 887 709 696

CZ/SK +420 417 592 179
 DK/NO/SE +45 75 84 10 10
 ES/PT +34 93 561 80 00
 LV/LT/EE +371 673 57 792
 RS/MK/ME +381 11 713 80 58
 RU/MD +7 495 669 23 11