

TAPS & FITTINGS LIBERTY

PRODUCT INFORMATION

1 . POSITION



| | |
|--------------------------|--|
| Article number | TVW10700400061 |
| Article title | Villeroy & Boch Liberty Tall single-lever basin mixer without waste, Chrome |
| Product designation | Tall single-lever basin mixer |
| Collection | Liberty |
| Assembly / Assembly type | Deck-mounted |
| Scope of delivery | 1 x tap fitting , 1 x aerator key 1 x fastening 2 x connecting hoses 1 x installation instructions |
| Length in mm | 228 |
| Width in mm | 43 |
| Height in mm | 249 |
| Weight in kg | 2,10 |
| Material | Brass |
| Surface | glossy |
| Colour name | Chrome |
| EAN number | 4062373674031 |
| Air plus | An aerator enriches the water with air for a particularly soft, water-saving jet |
| Comfort plus | Practical tap fitting height, ideal for combination with surface-mounted washbasins |
| Aqua smart | Sustainable, limited water flow: saving water without sacrificing on performance |
| Tap smartpressure | Constant water flow rate for washbasin mixers regardless of pressure fluctuations in the piping system |
| Length of spout in mm | 189 |
| Material | Brass |
| Volume | 10,66 |
| Cartridge | Cartridge with ceramic discs |
| Handle position | Top |
| Number of tap holes | 1 |
| Diameter of faucet body | 43 |
| Swivel aerator | Yes |
| Water regulation | Water temperature is regulated 45° to each side |
| Thermostat | No |
| Cool Tap | No |
| Spray types | Comfort jet |

COLOUR

COLOUR DESIGNATION



Chrome

CHARACTERISTICS



An aerator enriches the water with air for a particularly soft, water-saving jet



Sustainable, limited water flow: saving water without sacrificing on performance

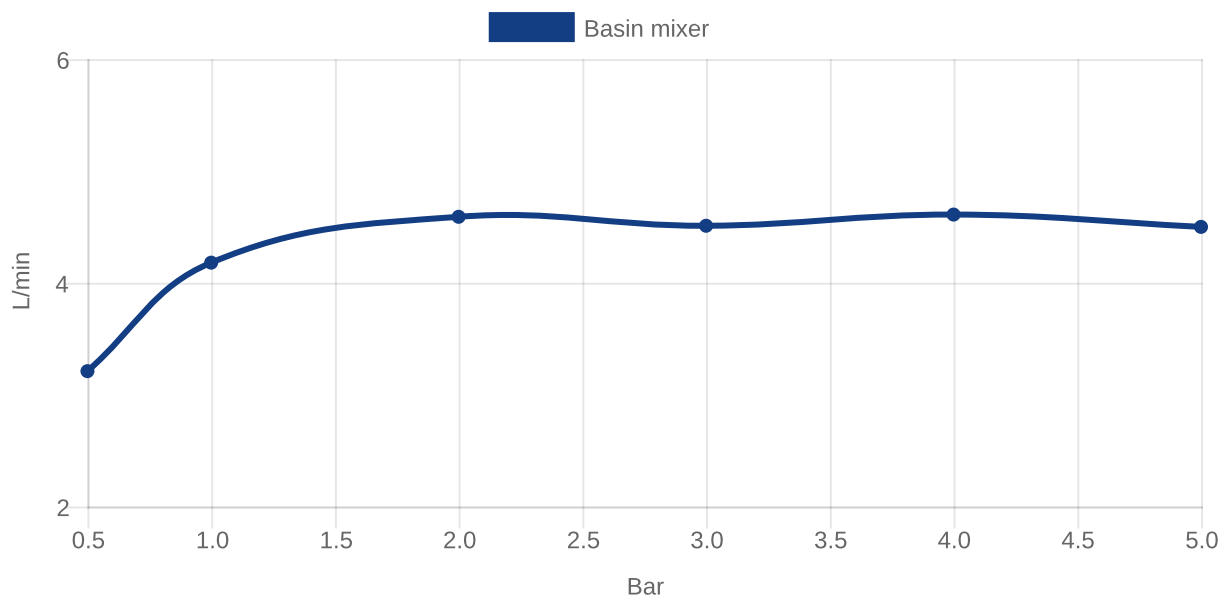


Practical tap fitting height, ideal for combination with surface-mounted washbasins

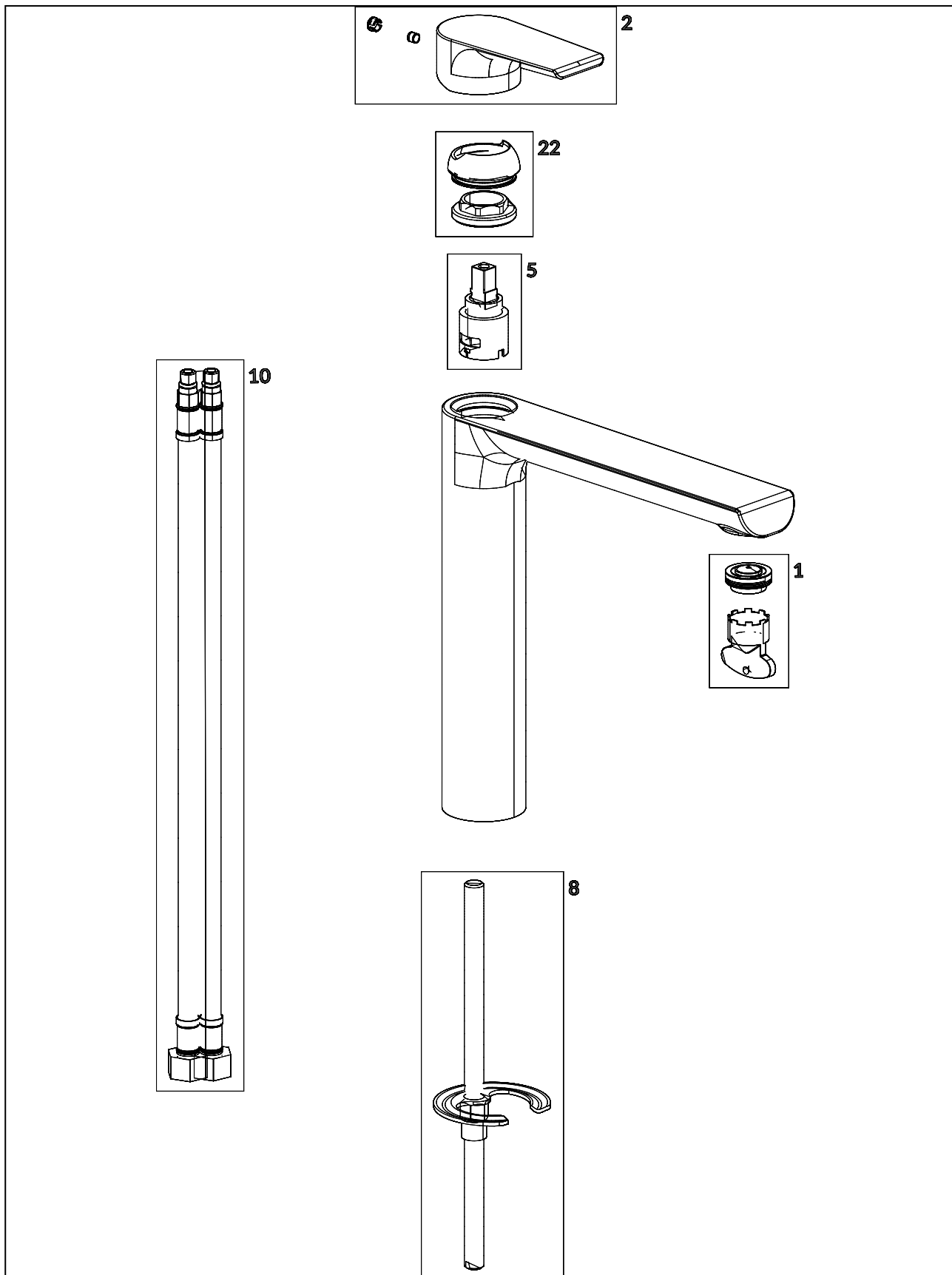


Constant water flow rate for washbasin mixers regardless of pressure fluctuations in the piping system

FLOW CHART



EXPLOSION DRAWINGS



BILL OF MATERIALS

| No. | Article No. | Description | Quantity |
|-----|----------------|------------------|----------|
| 5 | TVP00000108000 | Cartridge | 1 |
| 10 | TVP00002000000 | Connecting hoses | 1 |
| 1 | TVP00000100400 | Aerator set | 1 |
| 8 | TVP00000616000 | Fastening set | 1 |
| 2 | TVP10700500061 | Handle set | 1 |
| 27 | TVP10701700061 | Base ring | 1 |