

# PRODUCT DATA SHEET

crosswater<sup>®</sup>



## PRODUCT CODE

LM6000FSDMOAN

## RANGE

Limit

## DESCRIPTION

Limit 600mm Floorstanding Door Unit  
Modern Oak

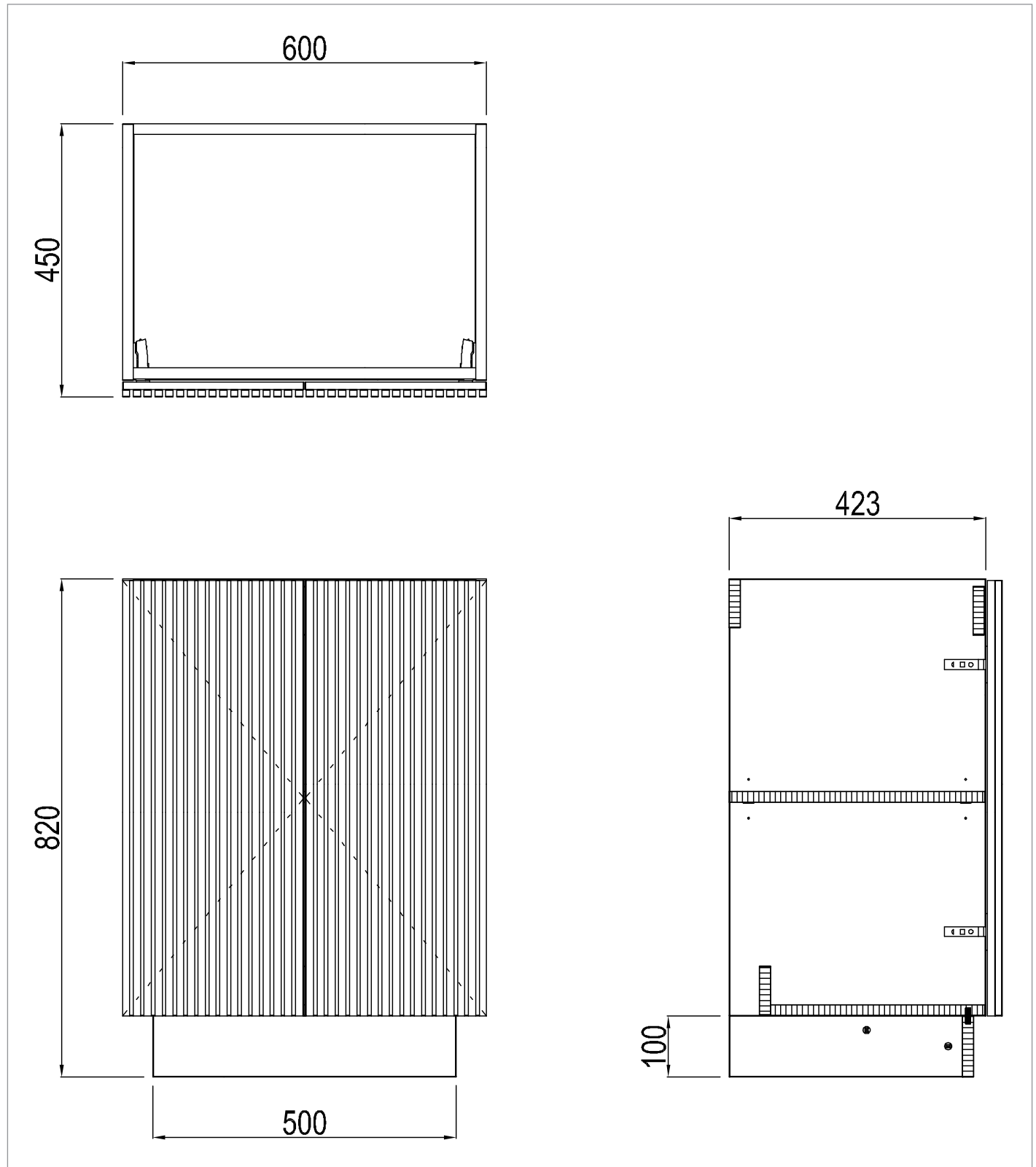
CATEGORY	Furniture
WARRANTY DETAILS	10 Years
COLOUR	Modern Oak
FINISH APPLICATION	Melamine
PRIMARY MATERIAL	MFC
SECONDARY MATERIAL	MDF
INSTALL TYPE	Floor Standing
PRODUCT WIDTH MM	600
PRODUCT HEIGHT MM	820
PRODUCT DEPTH MM	450
PRODUCT NET WEIGHT KG	24.5
STANDARDS	No

COLOUR CODE / REFERENCE	H3131 ST12
DRAWER BOX	0
DRAWER RUNNERS	0
WALL HANGERS	No
ADJUSTABLE FEET	No
DRAWER OPERATION	No

## TECHNICAL DIMENSIONS

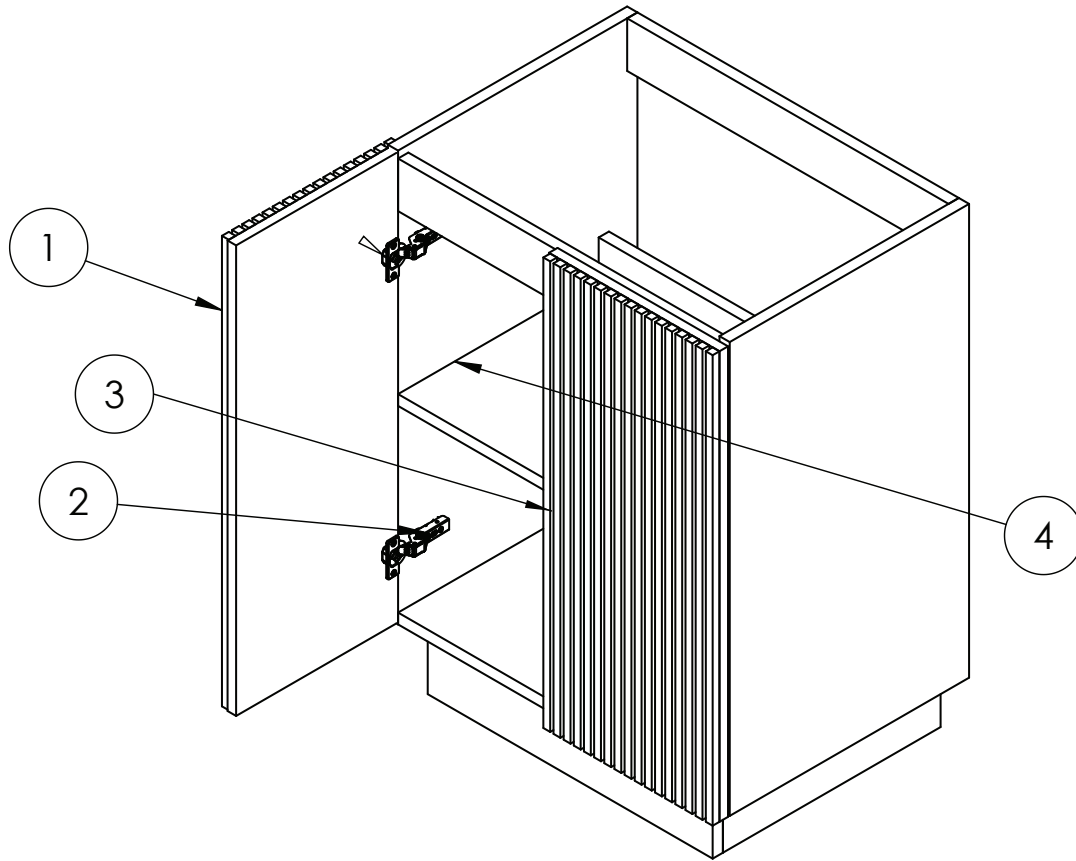
Dimensions in mm unless otherwise specified.

Tolerances (per material type) apply.



## SPARES LIST

Only the parts labelled are available as spares.



NUMBER	PART CODE	DESCRIPTION
1	DF_LM6000FSDSTAN	Limit 600mm Floorstanding Door Front Steelwood
	DF_LM6000FSDMOAN	Limit 600mm Floorstanding Door Front Modern Oak
	DF_LM6000FSDRWAN	Limit 600mm Floorstanding Door Front Royal Walnut
	DF_LM6000FSDWSAN	Limit 600mm Floorstanding Door Front Warm Stone
2	LIMITHINGE	Limit Door Hinges
3	LIMITPUSHOPEN	Limit Push to Open Mechanism
4	LIMITPINS	Limit Shelf Pins

# PRODUCT DATA SHEET

crosswater<sup>®</sup>



PRODUCT CODE  
FB0610SRW

RANGE  
FURN BASIN

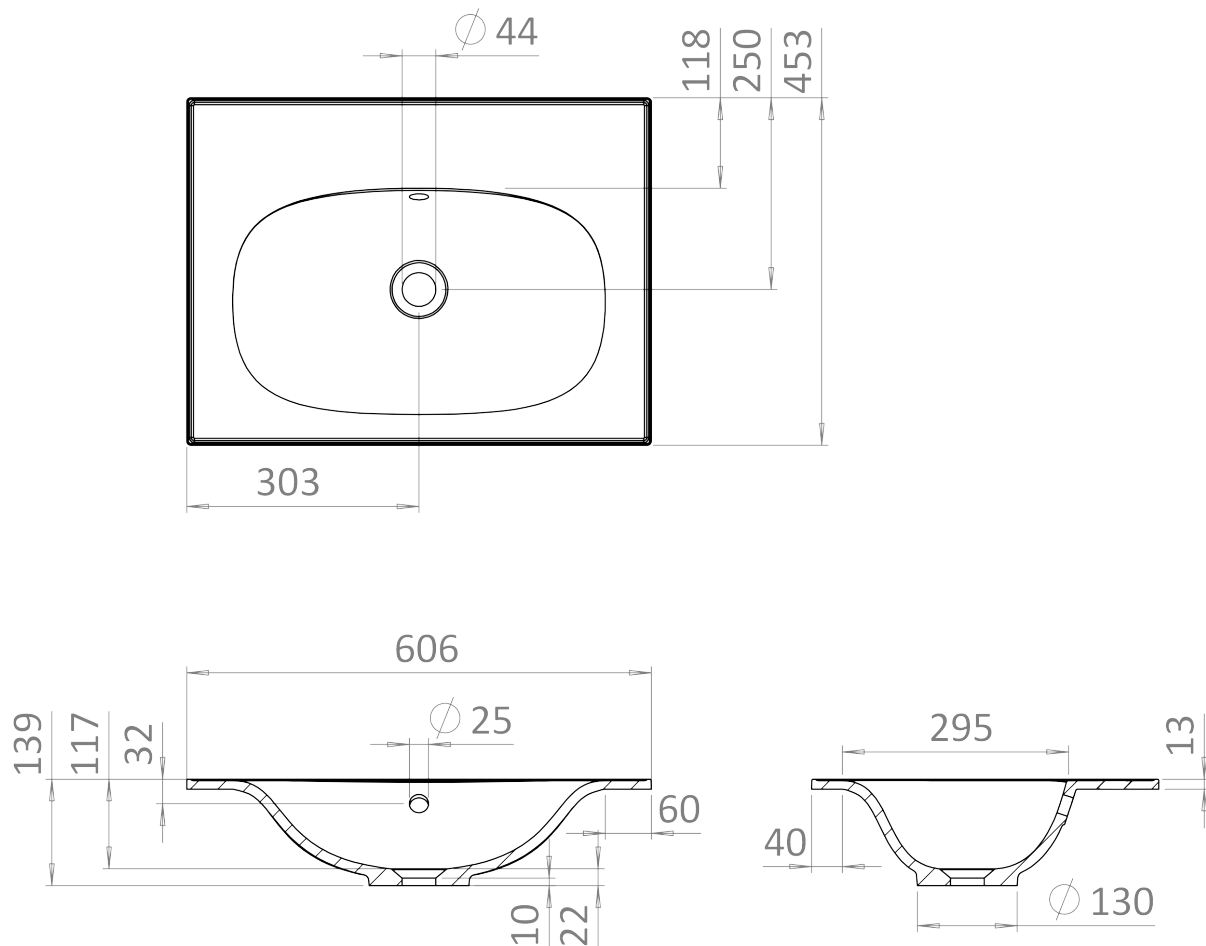
DESCRIPTION  
Furniture Basin 600mm 0TH White  
Overflow

COLOUR	White
MATERIAL	Cast Mineral Marble
STANDARDS	EN 31/EN 14688 - CL0
INSTALLATION TYPE	Furniture Mounted
DOP CLASS	01-2017
CAPACITY OF WATER AT OVERFLOW LEVEL	15 L
BASIN WASTE SIZE	45mm
TAP HOLES	0TH
OVERFLOW	Yes
WARRANTY	10 Years

## TECHNICAL DIMENSIONS

Dimensions in mm unless otherwise specified.

Tolerances (per material type) apply.



V10522

# PRODUCT DATA SHEET

crosswater<sup>®</sup>



PRODUCT CODE  
FB0611SRW

RANGE  
FURN BASIN

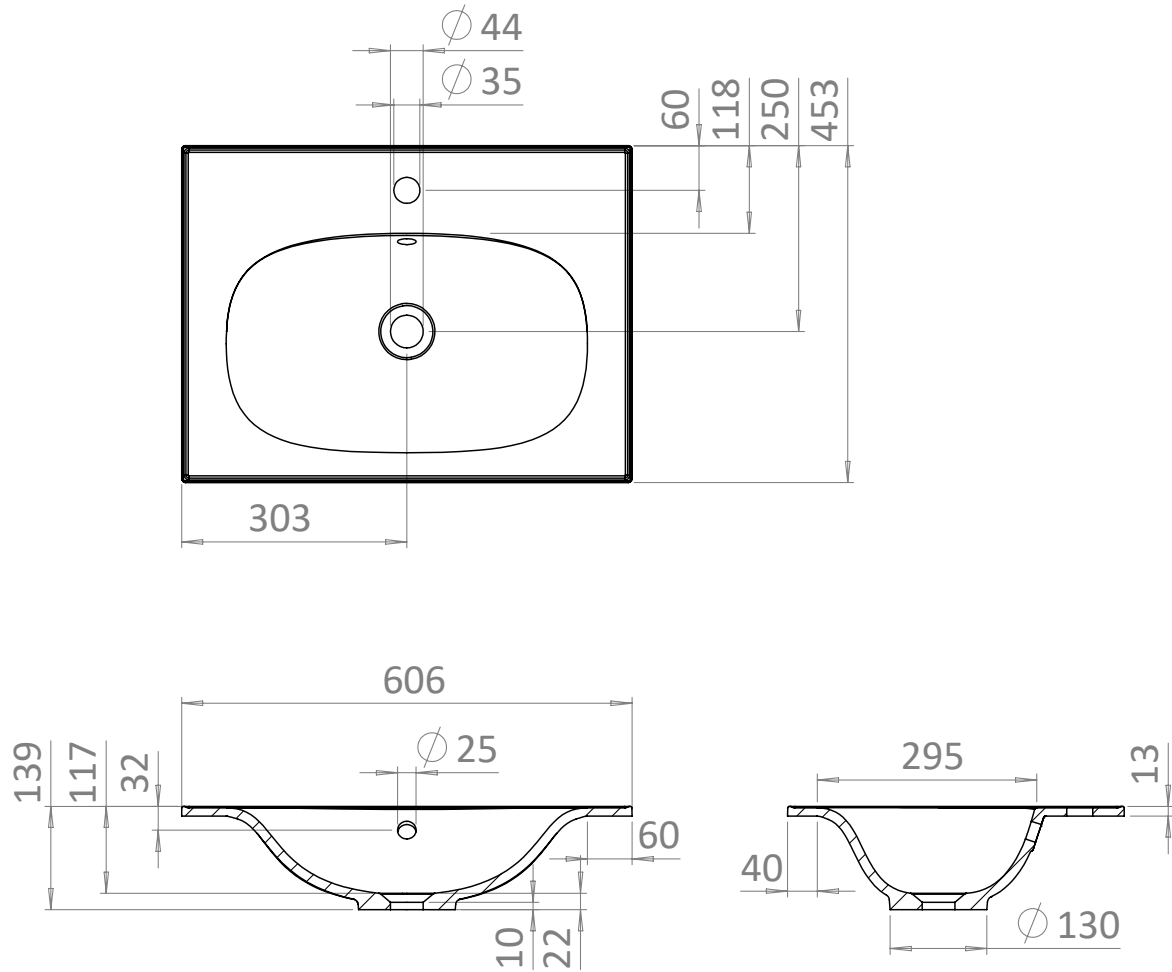
DESCRIPTION  
Furniture Basin 600mm 1TH White  
Overflow

COLOUR	White
MATERIAL	Cast Mineral Marble
STANDARDS	EN 31/EN 14688 - CL0
INSTALLATION TYPE	Furniture Mounted
DOP CLASS	01-2017
CAPACITY OF WATER AT OVERFLOW LEVEL	15 L
BASIN WASTE SIZE	45mm
TAP HOLES	1TH
OVERFLOW	Yes
WARRANTY	10 Years

## TECHNICAL DIMENSIONS

Dimensions in mm unless otherwise specified.

Tolerances (per material type) apply.



V10522

# PRODUCT DATA SHEET



**PRODUCT CODE**  
DE0005SCW+

**RANGE**  
GLIDE II

**DESCRIPTION**  
Basin Ceramic 600 White With Overflow

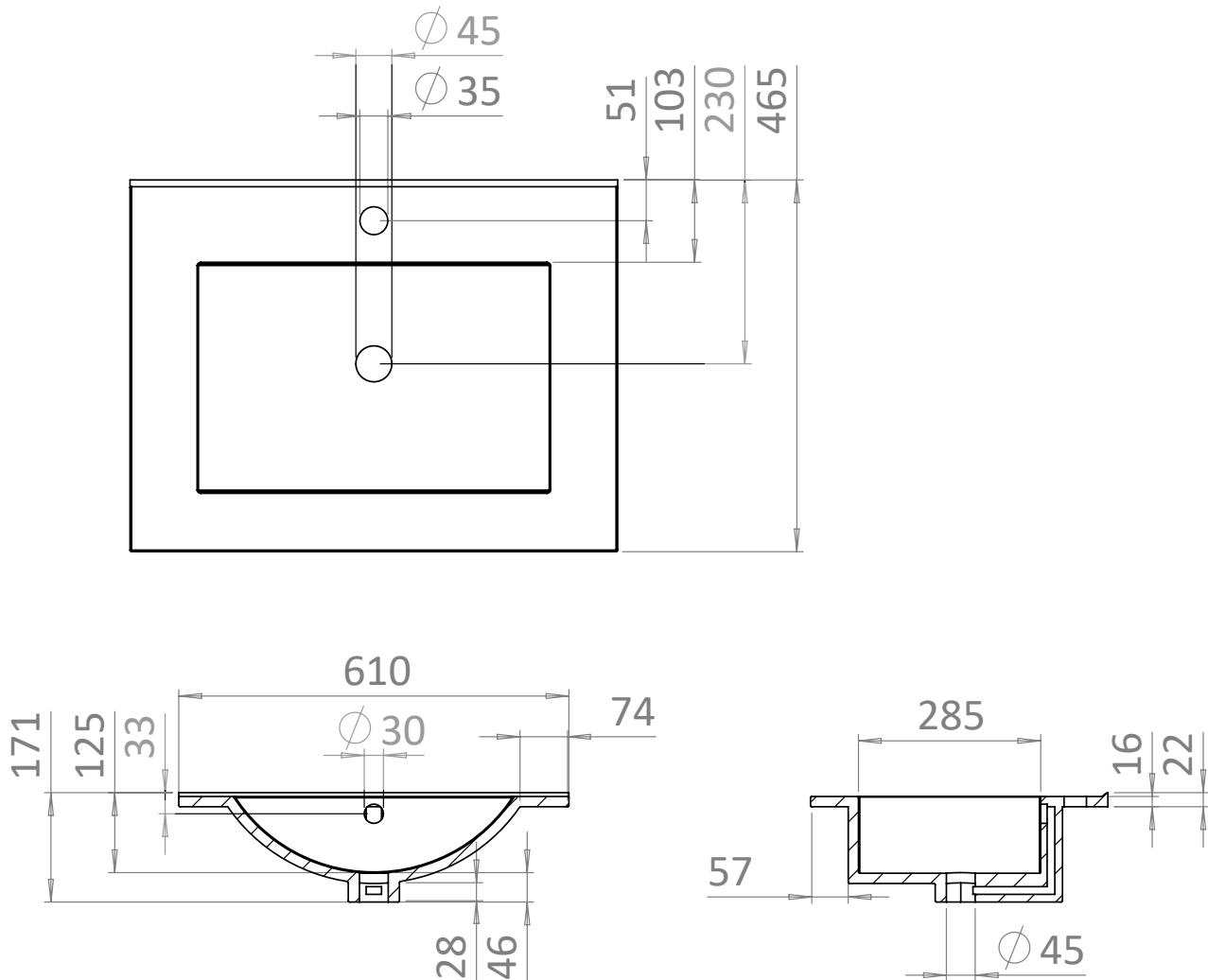
COLOUR	Euro White
MATERIAL	Vitreous China
STANDARDS	EN 31 EN 14688 - CLO
INSTALLATION TYPE	Furniture Mounted
BASIN WASTE SIZE	45mm
TAP HOLES	1
OVERFLOW	Yes
WEIGHT	12.5kg
WARRANTY	10 Years



## TECHNICAL DIMENSIONS

Dimensions in mm unless otherwise specified.

Tolerances (per material type) apply.



V10522

# PRODUCT DATA SHEET



**PRODUCT CODE**  
GL0610SIW+

**RANGE**  
GLIDE II

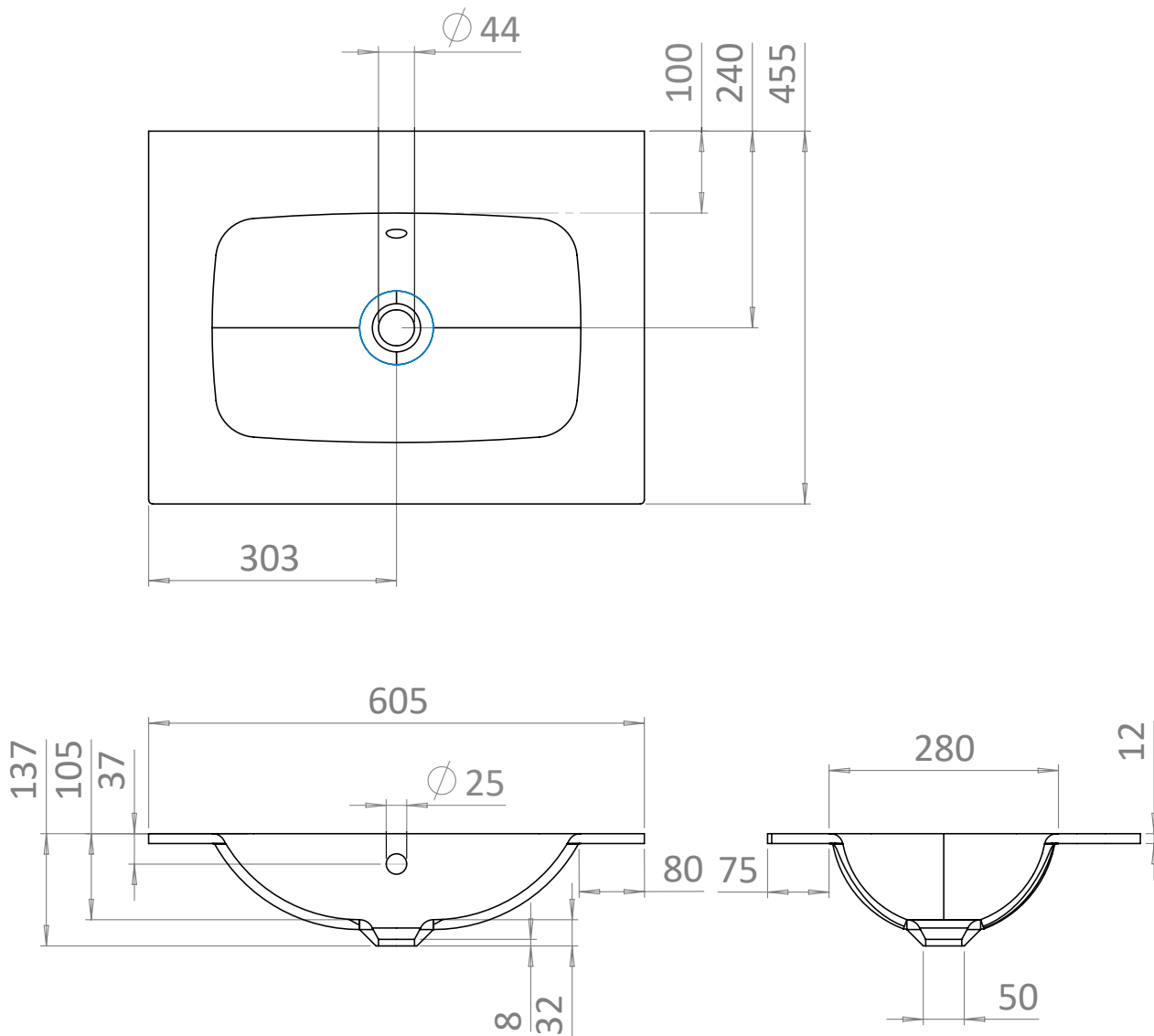
**DESCRIPTION**  
600mm Basin 0TH Ice White

COLOUR	Ice White
MATERIAL	Glass
STANDARDS	EN 31 EN 14688 - CLO
INSTALLATION TYPE	Furniture Mounted
CAPACITY OF WATER AT OVERFLOW LEVEL	15 L
BASIN WASTE SIZE	45mm
TAP HOLES	0TH
OVERFLOW	Yes
WEIGHT	8.3kg
WARRANTY	10 Years

## TECHNICAL DIMENSIONS

Dimensions in mm unless otherwise specified.

Tolerances (per material type) apply.



V11022

# PRODUCT DATA SHEET



**PRODUCT CODE**  
GL0611SIW+

**RANGE**  
GLIDE II

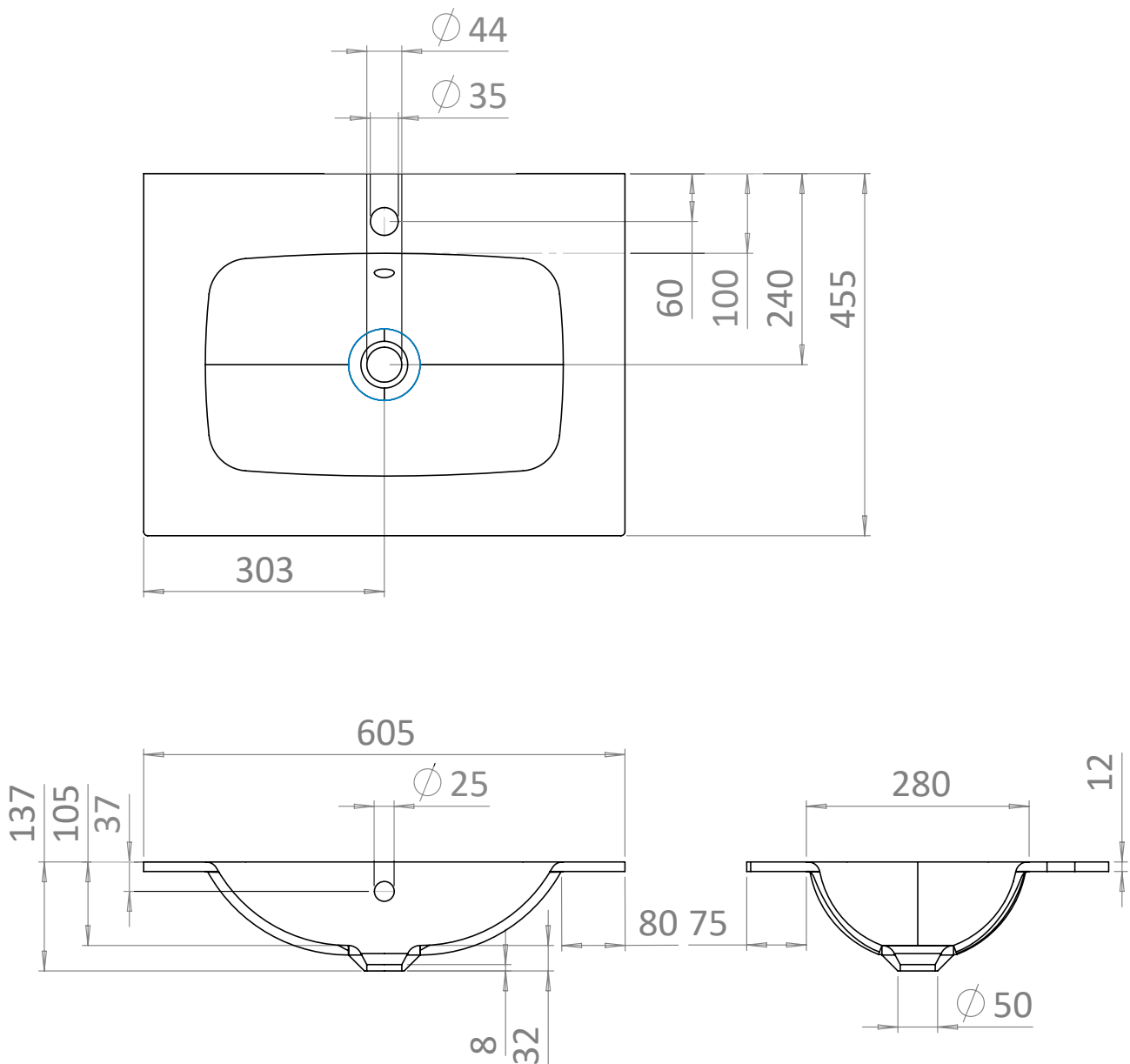
**DESCRIPTION**  
600mm Basin 1TH Ice White

COLOUR	Ice White
MATERIAL	Glass
STANDARDS	EN 31 EN 14688 - CLO
INSTALLATION TYPE	Furniture Mounted
CAPACITY OF WATER AT OVERFLOW LEVEL	15 L
BASIN WASTE SIZE	45mm
TAP HOLES	1TH
OVERFLOW	Yes
WEIGHT	8.3kg
WARRANTY	10 Years

## TECHNICAL DIMENSIONS

Dimensions in mm unless otherwise specified.

Tolerances (per material type) apply.



V11022