

INSTALLATION SYSTEMS VICONNECT INSTALLATION SYSTEMS

PRODUCT INFORMATION

1 . POSITION



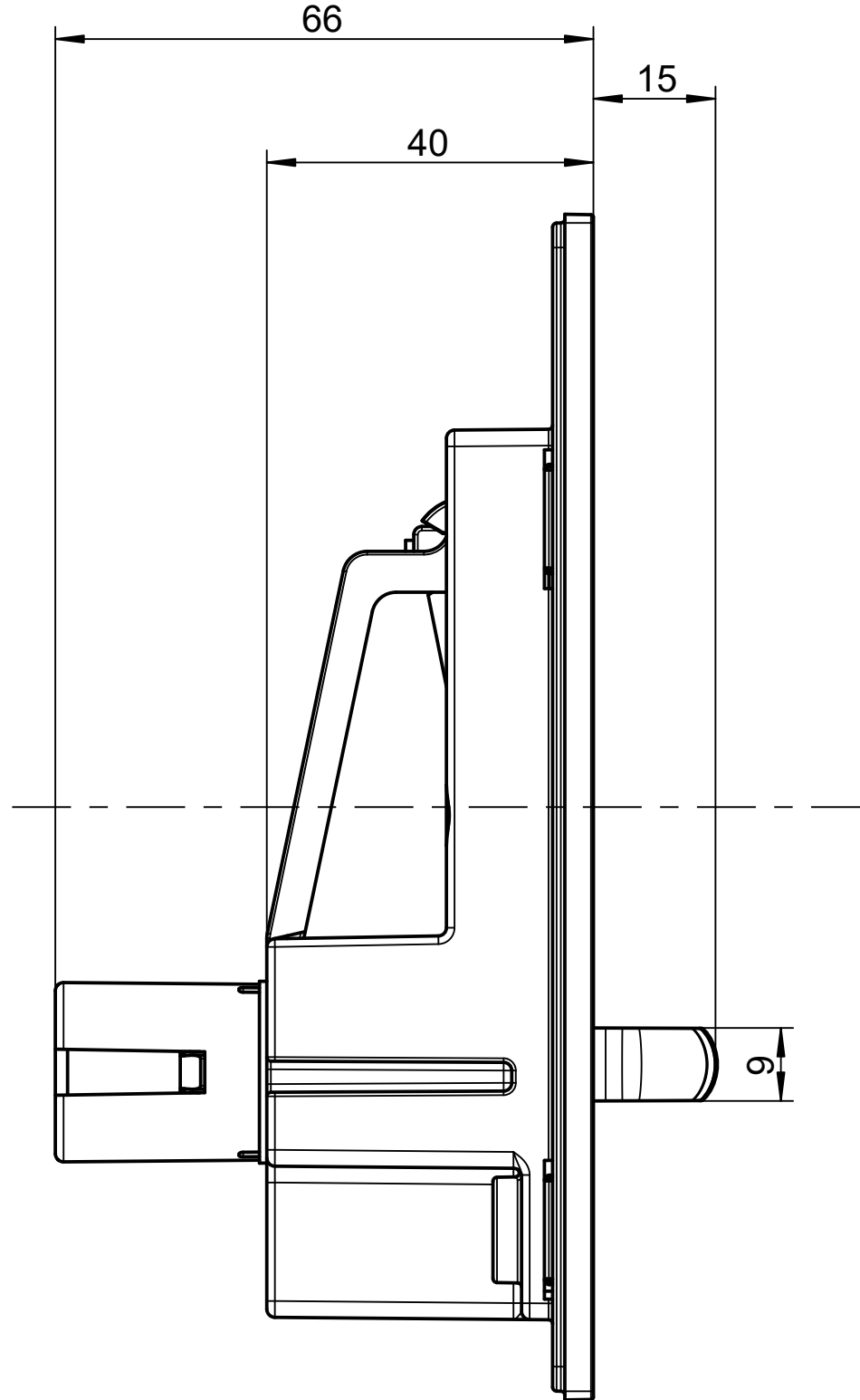
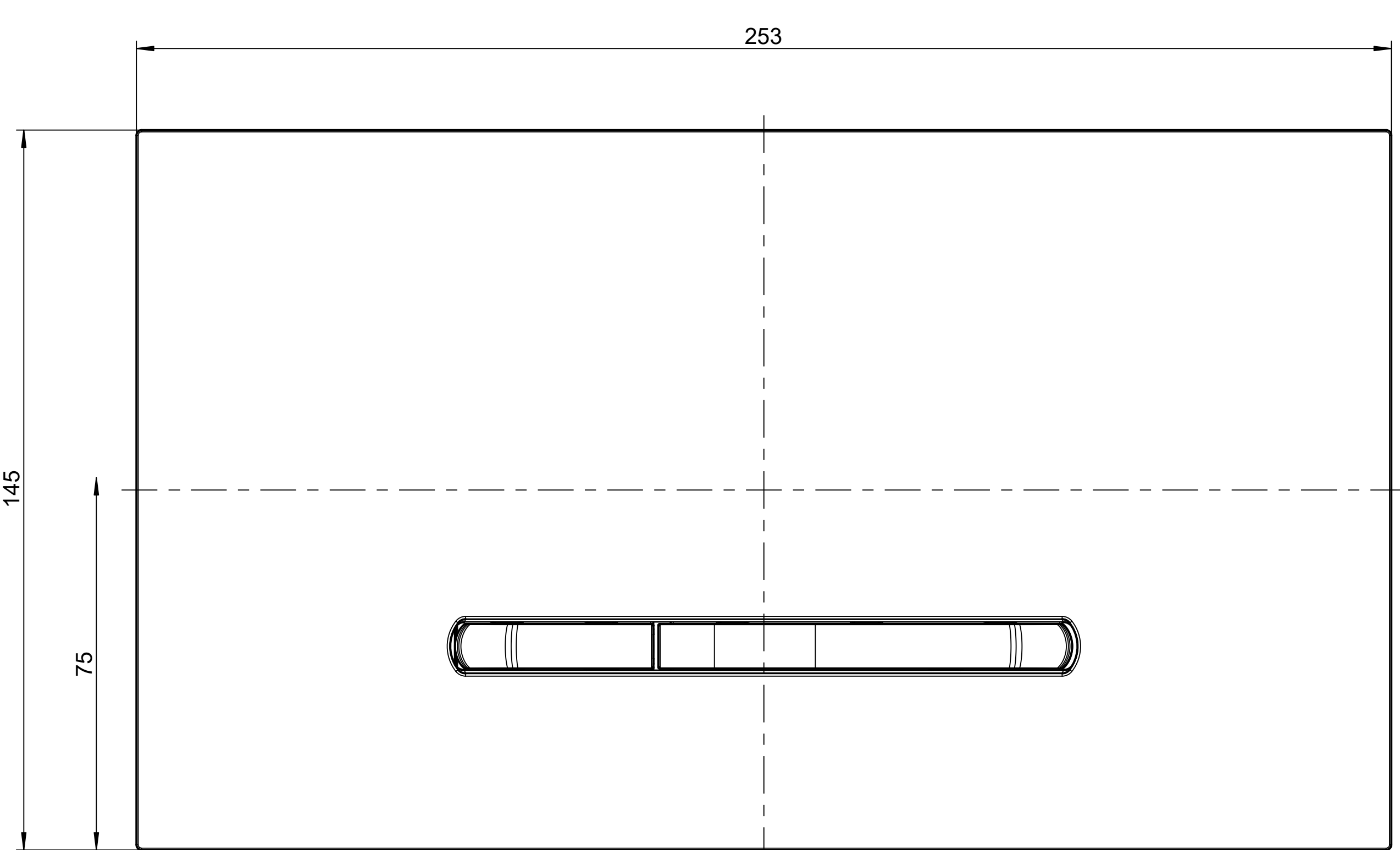
Article number	922169D8
Article title	Villeroy & Boch ViConnect installation systems Toilet flush plate 300S, Dual flush, Anthracite Matt
Product designation	Toilet flush plate
Collection	ViConnect installation systems
Assembly instructions	Easy connection to flush plate via flexible cables with bayonet joint
Scope of delivery	1 x suspension frame and fastening bolt
Ordering information	Suitable for combination with ViConnect toilet elements and cisterns Installation kit for flush-mounted installation optionally available Distance frame for covering uneven tile edges optionally available
Length in mm	150
Width in mm	260
Height in mm	66
Weight in kg	0,37
Suitable for	Dual flush
Material	Plastic
Surface	glossy
Colour name	Anthracite Matt
Activation / Flush	front-operated
EAN number	4051202733155

COLOUR

COLOUR DESIGNATION



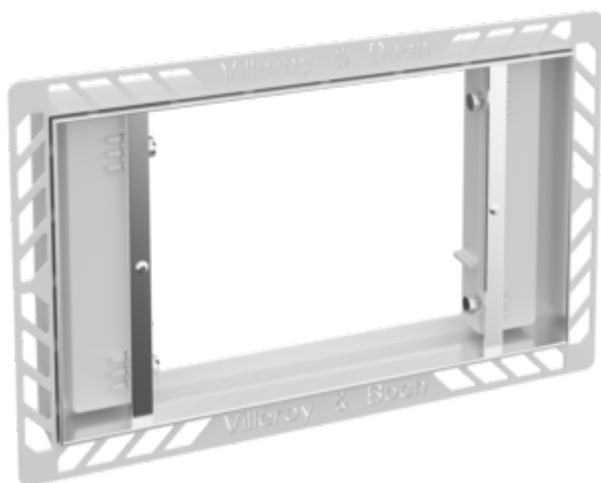
Anthracite Matt



ACCESSORIES VICONNECT INSTALLATION SYSTEMS

PRODUCT INFORMATION

1 . POSITION



Article number	922159LC
Article title	Villeroy & Boch ViConnect installation systems Flush-mounted installation kit, 300 x 190 x 30 mm, Stainless steel
Product designation	Flush-mounted installation kit
Collection	ViConnect installation systems
Scope of delivery	1 x installation set
Length in mm	190
Width in mm	300
Height in mm	30
Weight in kg	0,68
Material	Stainless steel
Colour name	Stainless steel
EAN number	4051202722241

COLOUR

COLOUR DESIGNATION



Stainless steel