

INSTALLATION SYSTEMS VICONNECT INSTALLATION SYSTEMS

PRODUCT INFORMATION

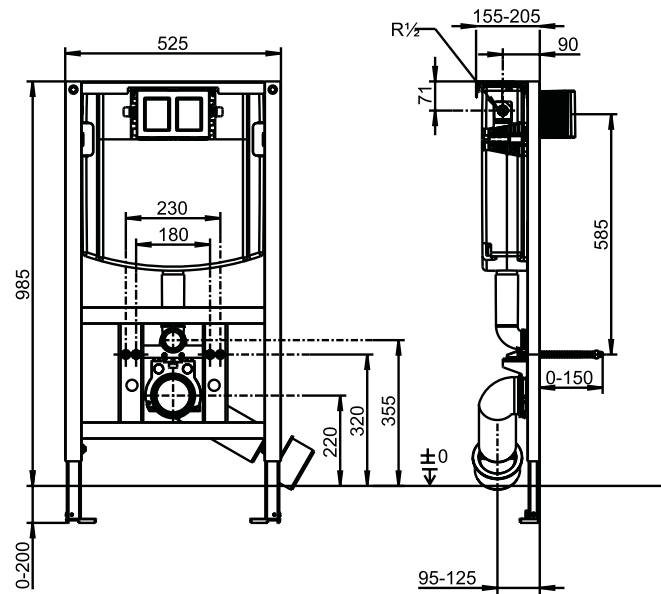
1 . POSITION



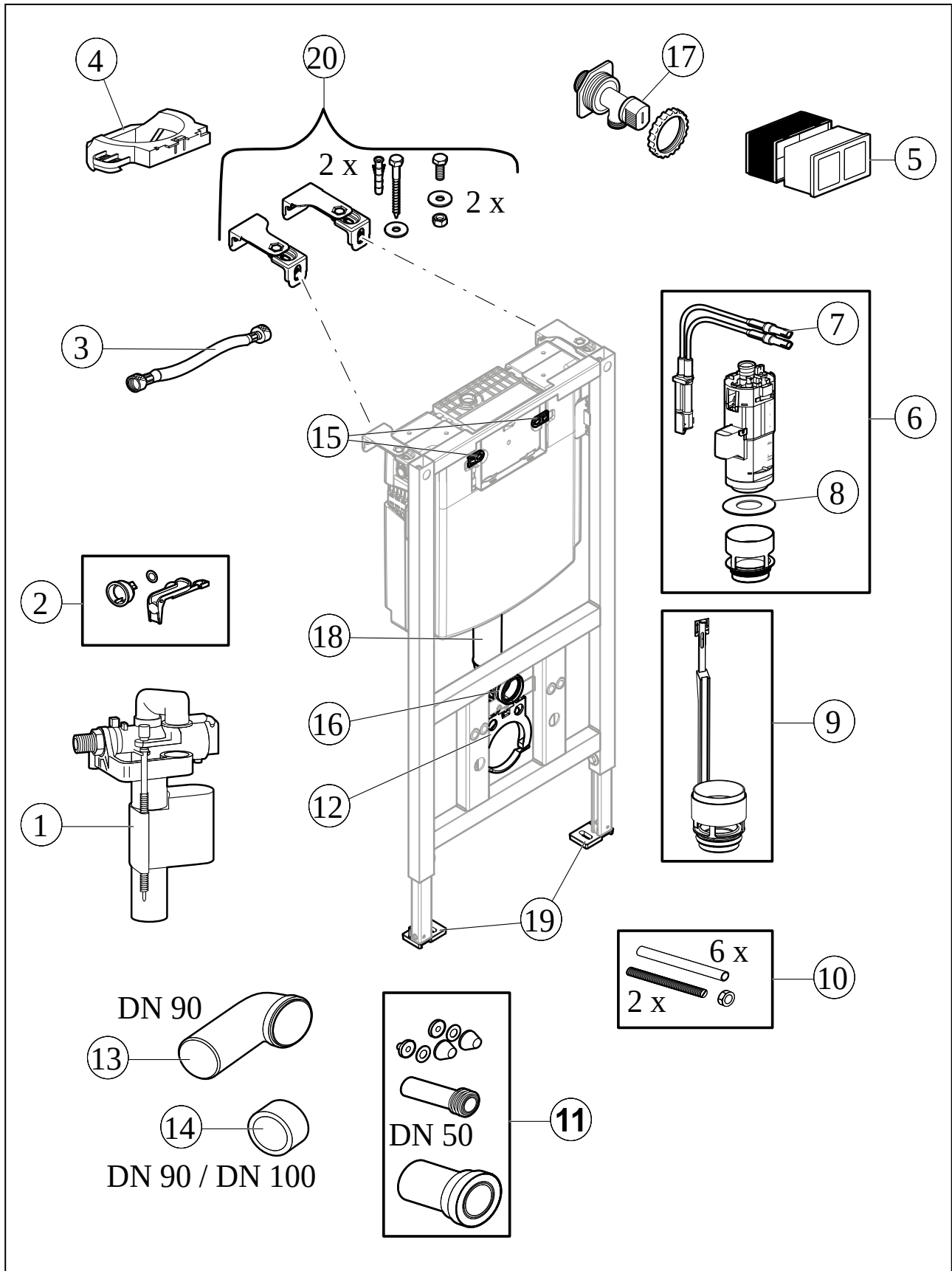
Article number	92093100
Article title	Villeroy & Boch ViConnect installation systems Toilet installation system, for Dry-wall construction, 525 x 985 x 155 mm
Product designation	Toilet installation system
Collection	ViConnect installation systems
Assembly / Assembly type	Dry-wall construction
Assembly instructions	for covering with plasterboard, installation on a solid brick wall, in dry-wall constructions etc. adjustment range of feet from unfinished floor level to upper edge of finished floor level: 0-200mm depth adjustment front edge of element: 135-205 mm (when actuated from above 155-205 mm)
Scope of delivery	1 x installation system , 1 x cistern 1 x installation kit
Ordering information	Please order flush plate separately.
Length in mm	155
Width in mm	525
Height in mm	985
Weight in kg	12,70
Suitable for	for wall-mounted WC
Material	Steel
EAN number	4062373838082

TECHNICAL DRAWINGS

92093100



EXPLOSION DRAWINGS



BILL OF MATERIALS

No.	Article No.	Description	Quantity
5	92249400	Construction protection for concealed cistern	1
14	92201100	Reducing sleeve	1
16	92236100	Seal for flush pipe bend	1
7	92249500	Cable box for connecting to the outlet valve and flush plate	1
12	92249800	Clip for toilet installation system	1
3	92234700	Connecting hoses	1
1	8L387000	AirGap filling valve WRAS-approved	1
4	92234600	Positioning device	1
6	8L073400	Outlet valve	1
11	92249700	Connection set	1
17	92233800	Angle valve	1
18	92194300	Short flush pipe bend	1
10	92249600	Fastening set	1
15	92234500	Clip for tank	1
19	92173600	System feet	1
9	92173400	Outlet valve with flow restrictor	1
2	92248900	Set of washers	1
8	92210800	Seal for outlet valve	1
20	92211100	Fastening set	1
13	92173500	Toilet U-bend	1