

# PRODUCT DATA SHEET



**PRODUCT CODE**  
MIROV40X50

**RANGE**  
Burlington

**DESCRIPTION**  
Oval Mirror 400 x 500 x 5mm

**WEBSITE LINK** [Click Here](#)



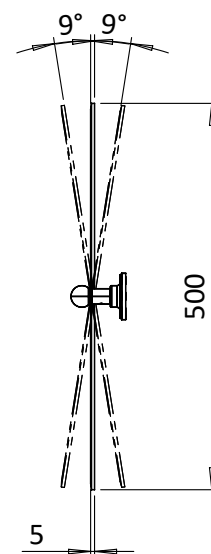
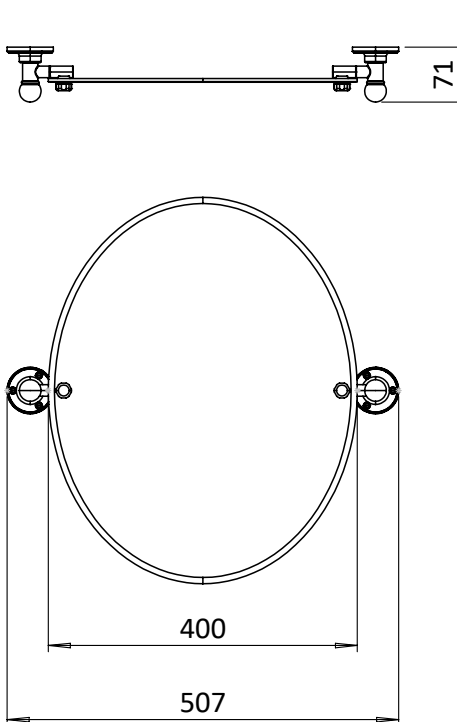
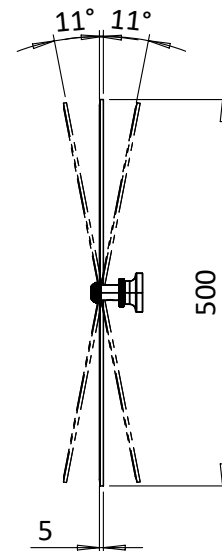
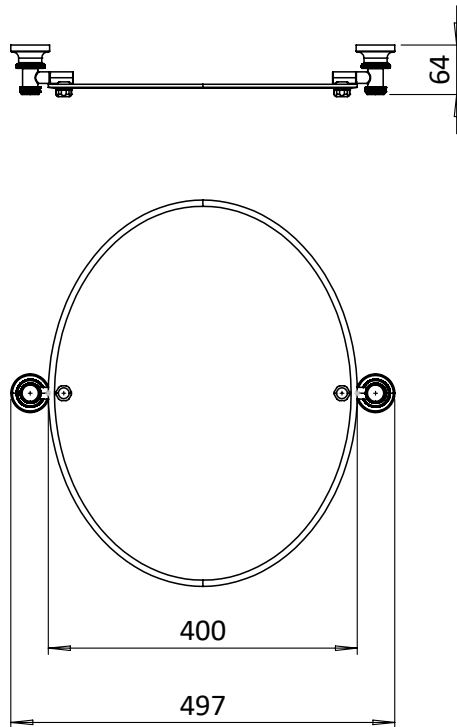
|                       |                    |
|-----------------------|--------------------|
| CATEGORY              | Cabinets & Mirrors |
| WARRANTY DETAILS      | 5 Years            |
| PRIMARY MATERIAL      | Glass              |
| INSTALL TYPE          | Wall Mounted       |
| PRODUCT WIDTH MM      | 400                |
| PRODUCT HEIGHT MM     | 500                |
| PRODUCT LENGTH MM     | 5                  |
| PRODUCT NET WEIGHT KG | 1.91               |
| STANDARDS             | ISO 9001           |

|                           |           |
|---------------------------|-----------|
| HANDING MIRROR & CABINETS | Universal |
| TEMPERATURE CHANGING      | No        |
| SHELVES ADJUSTABLE        | No        |
| SHAVER SOCKET INCLUDED    | No        |
| DIMMABLE                  | No        |

## TECHNICAL DIMENSIONS

Dimensions in mm unless otherwise specified.

Tolerances (per material type) apply.



## SPARES LIST

Only the parts labelled are available as spares.

**NO SPARES AVAILABLE**

# PRODUCT DATA SHEET



**PRODUCT CODE**  
MIROV50X70

**RANGE**  
Burlington

**DESCRIPTION**  
Oval Mirror 500 x 700 x 5mm

**WEBSITE LINK** [Click Here](#)



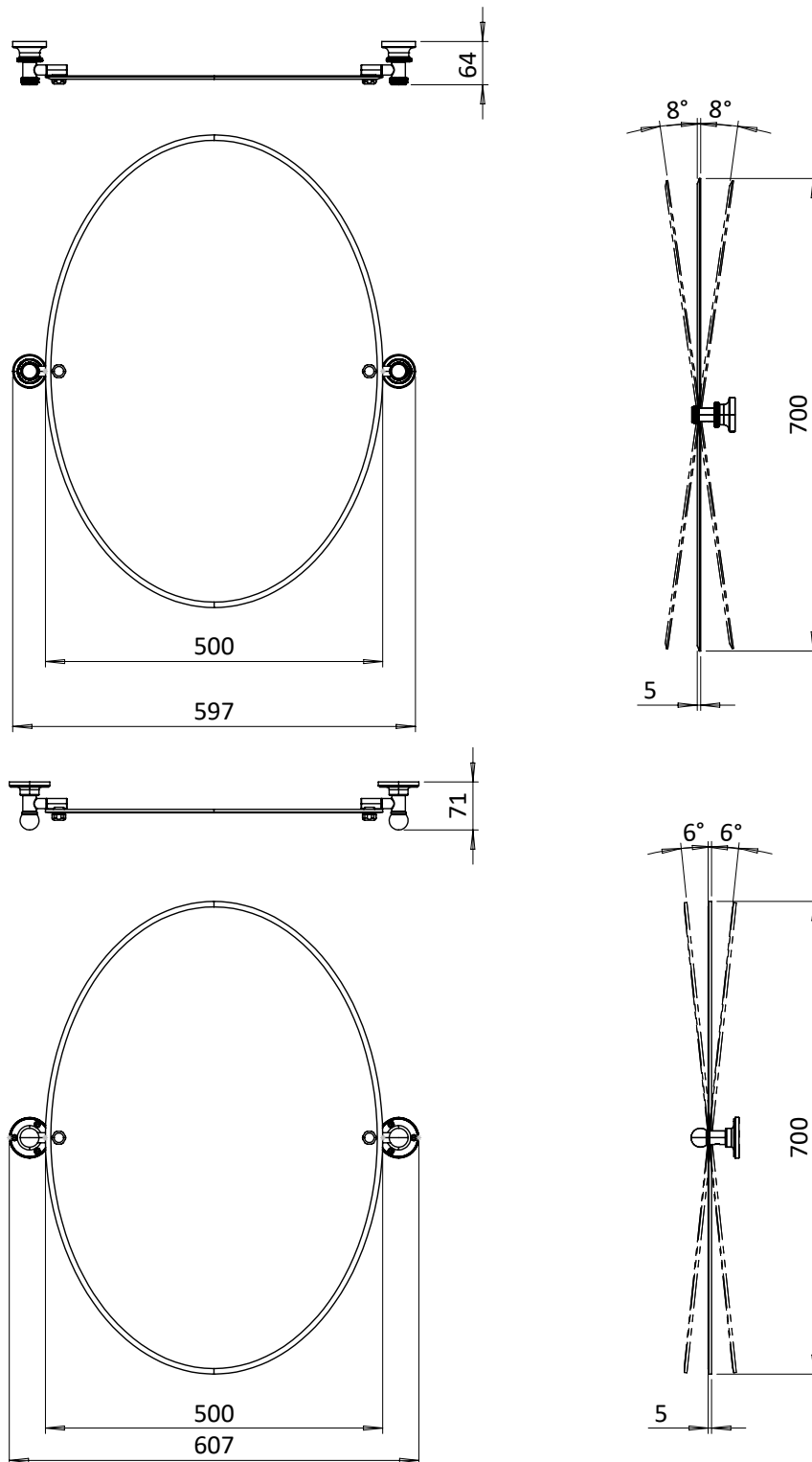
|                       |                    |
|-----------------------|--------------------|
| CATEGORY              | Cabinets & Mirrors |
| WARRANTY DETAILS      | 5 Years            |
| PRIMARY MATERIAL      | Glass              |
| INSTALL TYPE          | Wall Mounted       |
| PRODUCT WIDTH MM      | 500                |
| PRODUCT HEIGHT MM     | 700                |
| PRODUCT LENGTH MM     | 5                  |
| PRODUCT NET WEIGHT KG | 3.34               |
| STANDARDS             | ISO 9001           |

|                           |           |
|---------------------------|-----------|
| HANDING MIRROR & CABINETS | Universal |
| TEMPERATURE CHANGING      | No        |
| SHELVES ADJUSTABLE        | No        |
| SHAVER SOCKET INCLUDED    | No        |
| DIMMABLE                  | No        |

## TECHNICAL DIMENSIONS

Dimensions in mm unless otherwise specified.

Tolerances (per material type) apply.



## SPARES LIST

Only the parts labelled are available as spares.

**NO SPARES AVAILABLE**

# PRODUCT DATA SHEET

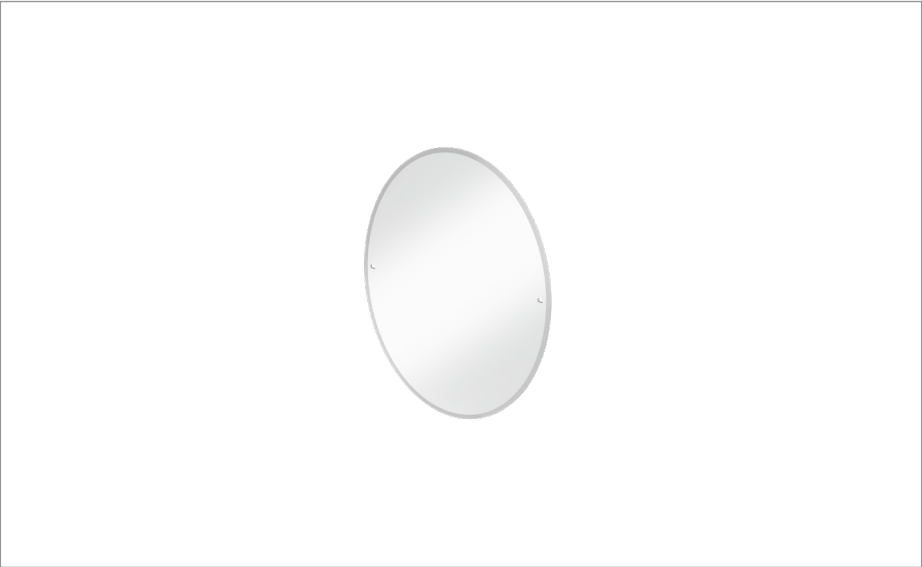


**PRODUCT CODE**  
MIROV60X80

**RANGE**  
Burlington

**DESCRIPTION**  
Oval Mirror 600 x 800 x 5mm

**WEBSITE LINK** [Click Here](#)



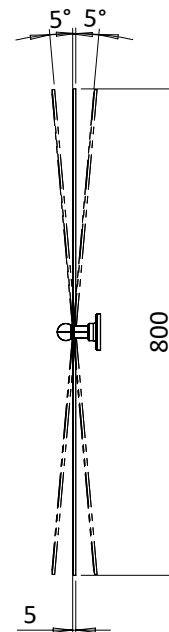
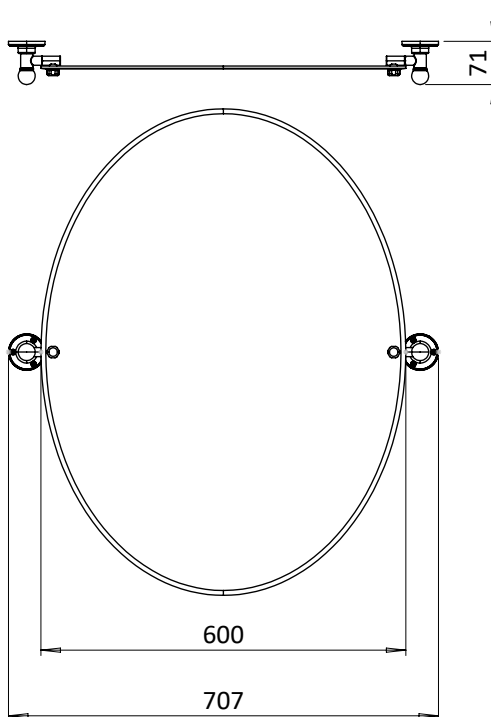
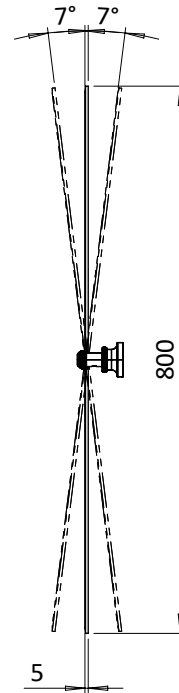
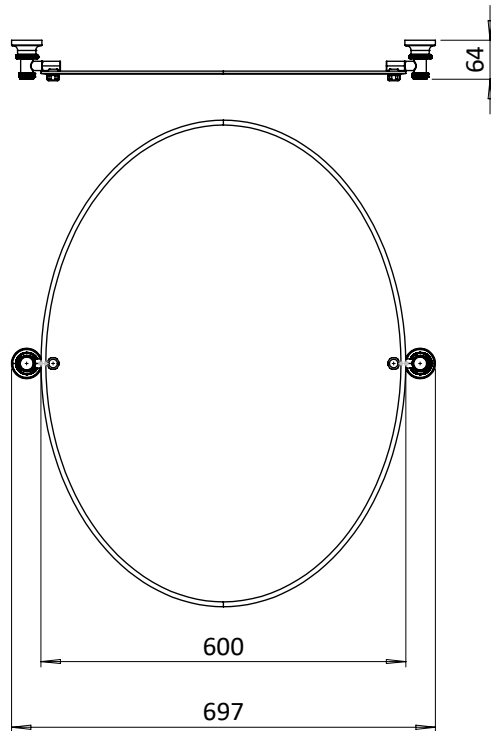
|                       |                    |
|-----------------------|--------------------|
| CATEGORY              | Cabinets & Mirrors |
| WARRANTY DETAILS      | 5 Years            |
| PRIMARY MATERIAL      | Glass              |
| INSTALL TYPE          | Wall Mounted       |
| PRODUCT WIDTH MM      | 600                |
| PRODUCT HEIGHT MM     | 800                |
| PRODUCT LENGTH MM     | 5                  |
| PRODUCT NET WEIGHT KG | 4.61               |
| STANDARDS             | ISO 9001           |

|                           |           |
|---------------------------|-----------|
| HANDING MIRROR & CABINETS | Universal |
| TEMPERATURE CHANGING      | No        |
| SHELVES ADJUSTABLE        | No        |
| SHAVER SOCKET INCLUDED    | No        |
| DIMMABLE                  | No        |

## TECHNICAL DIMENSIONS

Dimensions in mm unless otherwise specified.

Tolerances (per material type) apply.





## SPARES LIST

Only the parts labelled are available as spares.

**NO SPARES AVAILABLE**

# PRODUCT DATA SHEET

Burlington®

PRODUCT CODE  
MI18501G

RANGE  
Burlington

DESCRIPTION  
Mirror 1850 Fixing One Pair Gold



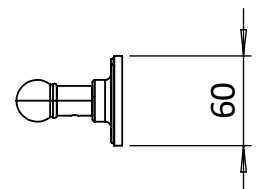
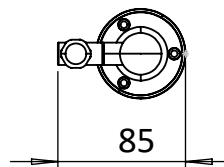
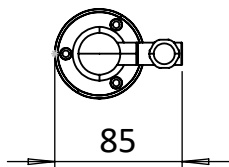
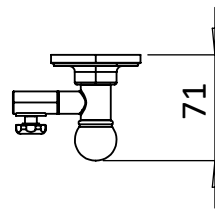
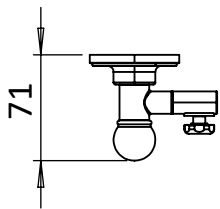
|                       |                     |
|-----------------------|---------------------|
| CATEGORY              | Cabinets & Mirrors  |
| WARRANTY DETAILS      | 2 Years             |
| COLOUR                | Gold                |
| FINISH APPLICATION    | PVD                 |
| PRIMARY MATERIAL      | Brass               |
| SECONDARY MATERIAL    | 304 Stainless Steel |
| INSTALL TYPE          | Wall Mounted        |
| PRODUCT WIDTH MM      | 85                  |
| PRODUCT HEIGHT MM     | 60                  |
| PRODUCT LENGTH MM     | 71                  |
| PRODUCT NET WEIGHT KG | 0.74                |
| STANDARDS             | ISO 9001            |

|                           |           |
|---------------------------|-----------|
| HANDING MIRROR & CABINETS | Universal |
| TEMPERATURE CHANGING      | No        |
| SHELVES ADJUSTABLE        | No        |
| SHAVER SOCKET INCLUDED    | No        |
| DIMMABLE                  | No        |

## TECHNICAL DIMENSIONS

Dimensions in mm unless otherwise specified.

Tolerances (per material type) apply.



## SPARES LIST

Only the parts labelled are available as spares.

SPARES AVAILABLE UPON REQUEST

# PRODUCT DATA SHEET



PRODUCT CODE  
MI19091G

RANGE  
Burlington

DESCRIPTION  
Mirror 1909 Fixing One Pair Gold



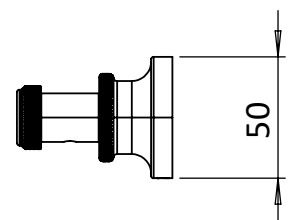
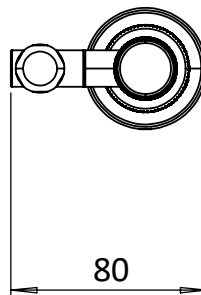
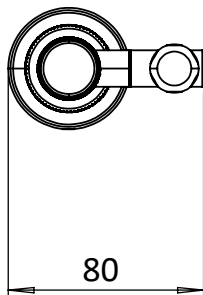
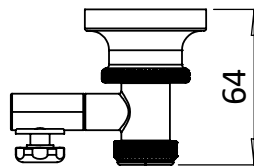
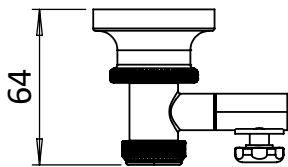
|                       |                     |
|-----------------------|---------------------|
| CATEGORY              | Cabinets & Mirrors  |
| WARRANTY DETAILS      | 2 Years             |
| COLOUR                | Gold                |
| FINISH APPLICATION    | PVD                 |
| PRIMARY MATERIAL      | Brass               |
| SECONDARY MATERIAL    | 304 Stainless Steel |
| INSTALL TYPE          | Wall Mounted        |
| PRODUCT WIDTH MM      | 80                  |
| PRODUCT HEIGHT MM     | 50                  |
| PRODUCT LENGTH MM     | 64                  |
| PRODUCT NET WEIGHT KG | 0.69                |
| STANDARDS             | ISO 9001            |

|                           |           |
|---------------------------|-----------|
| HANDING MIRROR & CABINETS | Universal |
| TEMPERATURE CHANGING      | No        |
| SHELVES ADJUSTABLE        | No        |
| SHAVER SOCKET INCLUDED    | No        |
| DIMMABLE                  | No        |

## TECHNICAL DIMENSIONS

Dimensions in mm unless otherwise specified.

Tolerances (per material type) apply.



## SPARES LIST

Only the parts labelled are available as spares.

SPARES AVAILABLE UPON REQUEST