

PRODUCT DATA SHEET



PRODUCT CODE
MIRRE45X65

RANGE
Burlington

DESCRIPTION
Rectangular Mirror 450 x 650 x 5mm

WEBSITE LINK [Click Here](#)

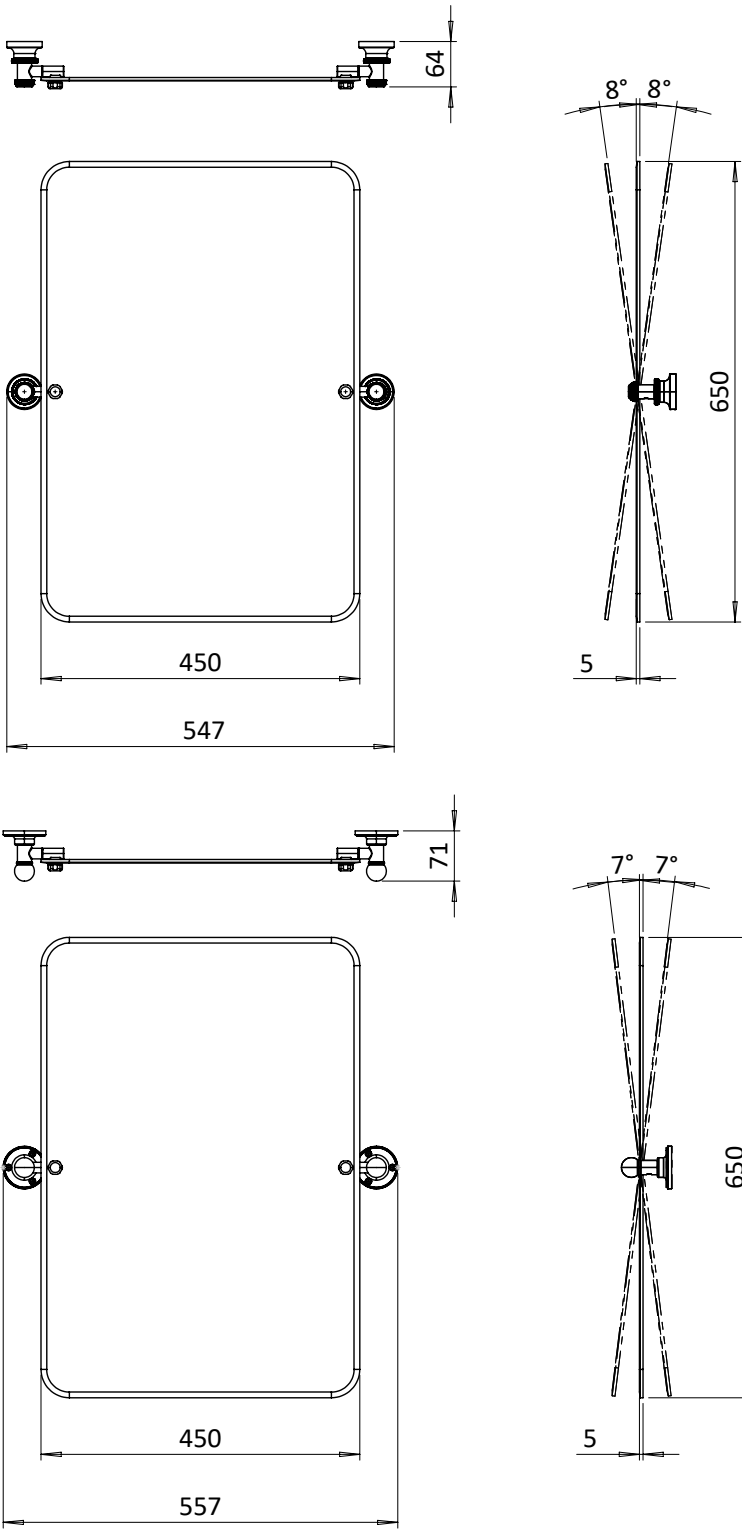


| | |
|-----------------------|--------------------|
| CATEGORY | Cabinets & Mirrors |
| WARRANTY DETAILS | 5 Years |
| PRIMARY MATERIAL | Glass |
| INSTALL TYPE | Wall Mounted |
| PRODUCT WIDTH MM | 450 |
| PRODUCT HEIGHT MM | 650 |
| PRODUCT LENGTH MM | 5 |
| PRODUCT NET WEIGHT KG | 3.54 |
| STANDARDS | ISO 9001 |

| | |
|---------------------------|-----------|
| HANDING MIRROR & CABINETS | Universal |
| TEMPERATURE CHANGING | No |
| SHELVES ADJUSTABLE | No |
| SHAVER SOCKET INCLUDED | No |
| DIMMABLE | No |

TECHNICAL DIMENSIONS

Dimensions in mm unless otherwise specified.
Tolerances (per material type) apply.



SPARES LIST

Only the parts labelled are available as spares.

NO SPARES AVAILABLE

PRODUCT DATA SHEET



PRODUCT CODE
MIRRE65X85

RANGE
Burlington

DESCRIPTION
Rectangular Mirror 650 x 850 x 5mm

WEBSITE LINK [Click Here](#)



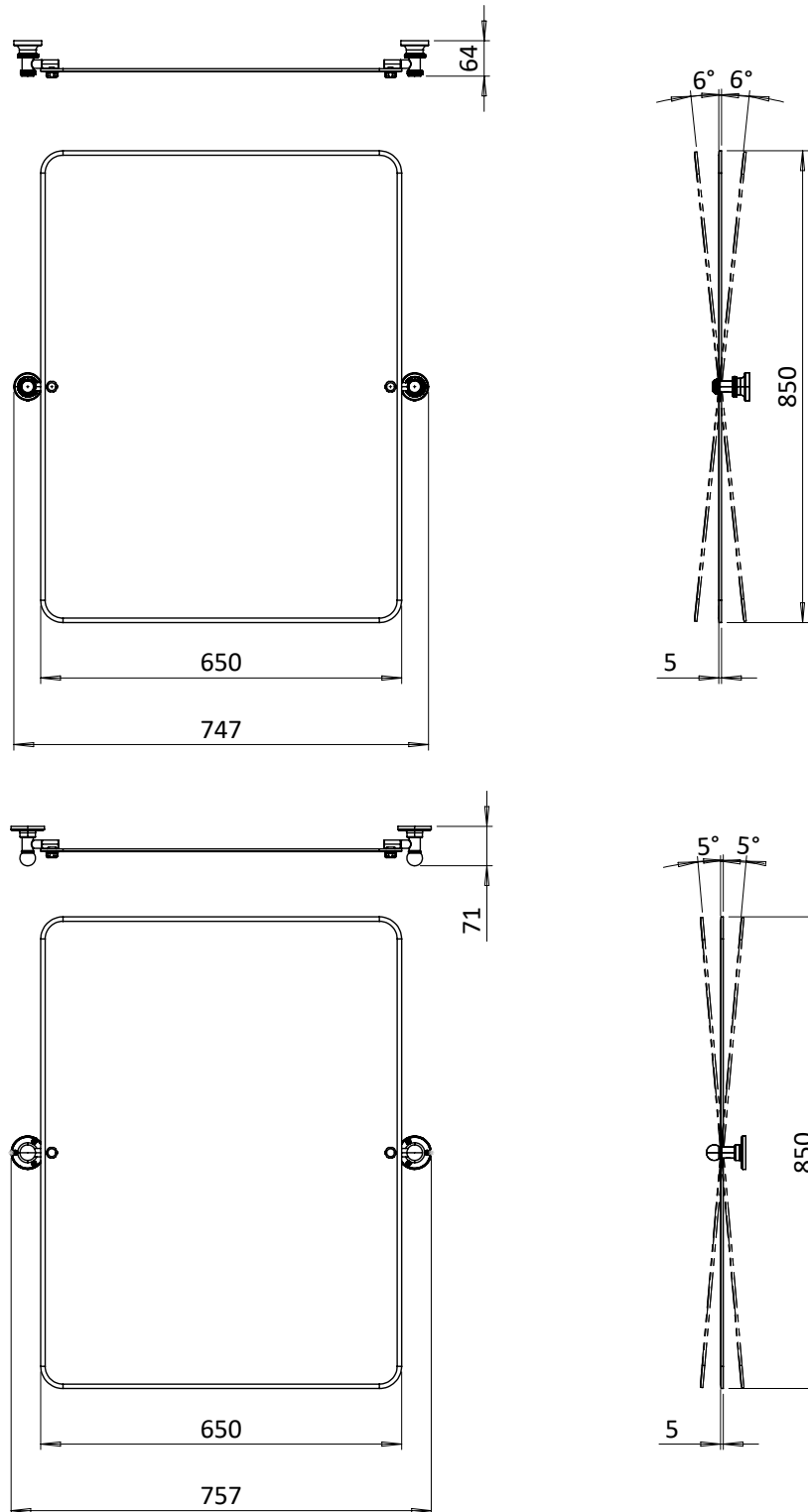
| | |
|-----------------------|--------------------|
| CATEGORY | Cabinets & Mirrors |
| WARRANTY DETAILS | 5 Years |
| PRIMARY MATERIAL | Glass |
| INSTALL TYPE | Wall Mounted |
| PRODUCT WIDTH MM | 650 |
| PRODUCT HEIGHT MM | 850 |
| PRODUCT LENGTH MM | 5 |
| PRODUCT NET WEIGHT KG | 6.47 |
| STANDARDS | ISO 9001 |

| | |
|---------------------------|-----------|
| HANDING MIRROR & CABINETS | Universal |
| TEMPERATURE CHANGING | No |
| SHELVES ADJUSTABLE | No |
| SHAVER SOCKET INCLUDED | No |
| DIMMABLE | No |

TECHNICAL DIMENSIONS

Dimensions in mm unless otherwise specified.

Tolerances (per material type) apply.



SPARES LIST

Only the parts labelled are available as spares.

NO SPARES AVAILABLE

PRODUCT DATA SHEET

Burlington®

PRODUCT CODE
MI18501G

RANGE
Burlington

DESCRIPTION
Mirror 1850 Fixing One Pair Gold



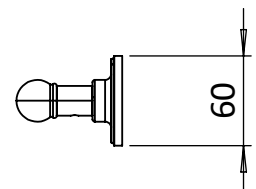
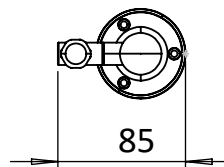
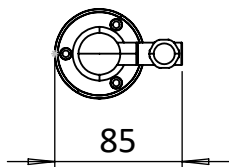
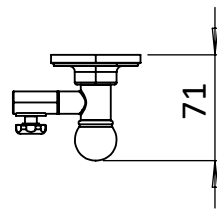
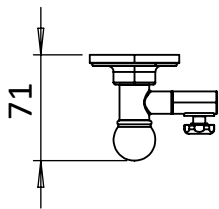
| | |
|-----------------------|---------------------|
| CATEGORY | Cabinets & Mirrors |
| WARRANTY DETAILS | 2 Years |
| COLOUR | Gold |
| FINISH APPLICATION | PVD |
| PRIMARY MATERIAL | Brass |
| SECONDARY MATERIAL | 304 Stainless Steel |
| INSTALL TYPE | Wall Mounted |
| PRODUCT WIDTH MM | 85 |
| PRODUCT HEIGHT MM | 60 |
| PRODUCT LENGTH MM | 71 |
| PRODUCT NET WEIGHT KG | 0.74 |
| STANDARDS | ISO 9001 |

| | |
|---------------------------|-----------|
| HANDING MIRROR & CABINETS | Universal |
| TEMPERATURE CHANGING | No |
| SHELVES ADJUSTABLE | No |
| SHAVER SOCKET INCLUDED | No |
| DIMMABLE | No |

TECHNICAL DIMENSIONS

Dimensions in mm unless otherwise specified.

Tolerances (per material type) apply.



SPARES LIST

Only the parts labelled are available as spares.

SPARES AVAILABLE UPON REQUEST

PRODUCT DATA SHEET

Burlington®

PRODUCT CODE
MI19091G

RANGE
Burlington

DESCRIPTION
Mirror 1909 Fixing One Pair Gold



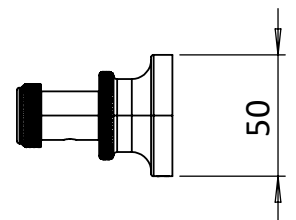
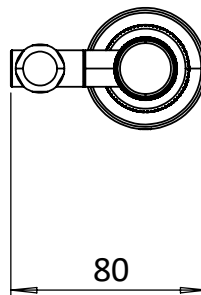
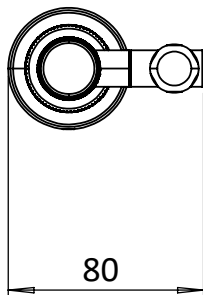
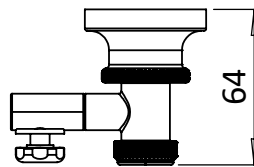
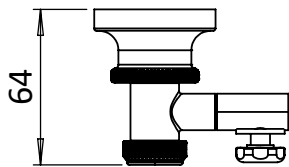
| | |
|-----------------------|---------------------|
| CATEGORY | Cabinets & Mirrors |
| WARRANTY DETAILS | 2 Years |
| COLOUR | Gold |
| FINISH APPLICATION | PVD |
| PRIMARY MATERIAL | Brass |
| SECONDARY MATERIAL | 304 Stainless Steel |
| INSTALL TYPE | Wall Mounted |
| PRODUCT WIDTH MM | 80 |
| PRODUCT HEIGHT MM | 50 |
| PRODUCT LENGTH MM | 64 |
| PRODUCT NET WEIGHT KG | 0.69 |
| STANDARDS | ISO 9001 |

| | |
|---------------------------|-----------|
| HANDING MIRROR & CABINETS | Universal |
| TEMPERATURE CHANGING | No |
| SHELVES ADJUSTABLE | No |
| SHAVER SOCKET INCLUDED | No |
| DIMMABLE | No |

TECHNICAL DIMENSIONS

Dimensions in mm unless otherwise specified.

Tolerances (per material type) apply.



SPARES LIST

Only the parts labelled are available as spares.

SPARES AVAILABLE UPON REQUEST