

# PRODUCT DATA SHEET



**PRODUCT CODE**  
MIRRE45X65

**RANGE**  
Burlington

**DESCRIPTION**  
Rectangular Mirror 450 x 650 x 5mm

**WEBSITE LINK** [Click Here](#)



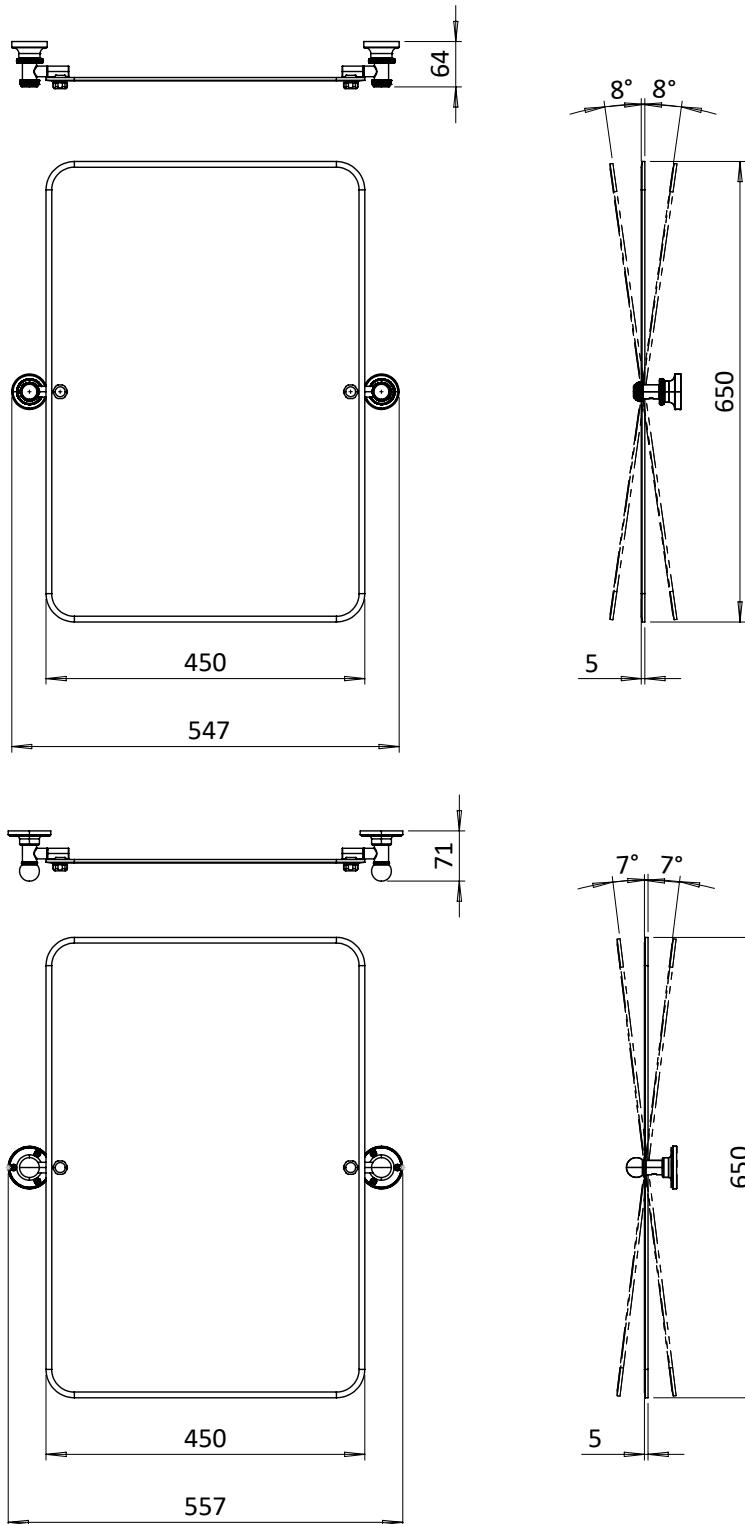
CATEGORY	Cabinets & Mirrors
WARRANTY DETAILS	5 Years
PRIMARY MATERIAL	Glass
INSTALL TYPE	Wall Mounted
PRODUCT WIDTH MM	450
PRODUCT HEIGHT MM	650
PRODUCT LENGTH MM	5
PRODUCT NET WEIGHT KG	3.54
STANDARDS	ISO 9001

HANDING MIRROR & CABINETS	Universal
TEMPERATURE CHANGING	No
SHELVES ADJUSTABLE	No
SHAVER SOCKET INCLUDED	No
DIMMABLE	No

## TECHNICAL DIMENSIONS

Dimensions in mm unless otherwise specified.

Tolerances (per material type) apply.



## SPARES LIST

Only the parts labelled are available as spares.

**NO SPARES AVAILABLE**

# PRODUCT DATA SHEET



**PRODUCT CODE**  
MIRRE65X85

**RANGE**  
Burlington

**DESCRIPTION**  
Rectangular Mirror 650 x 850 x 5mm

**WEBSITE LINK** [Click Here](#)



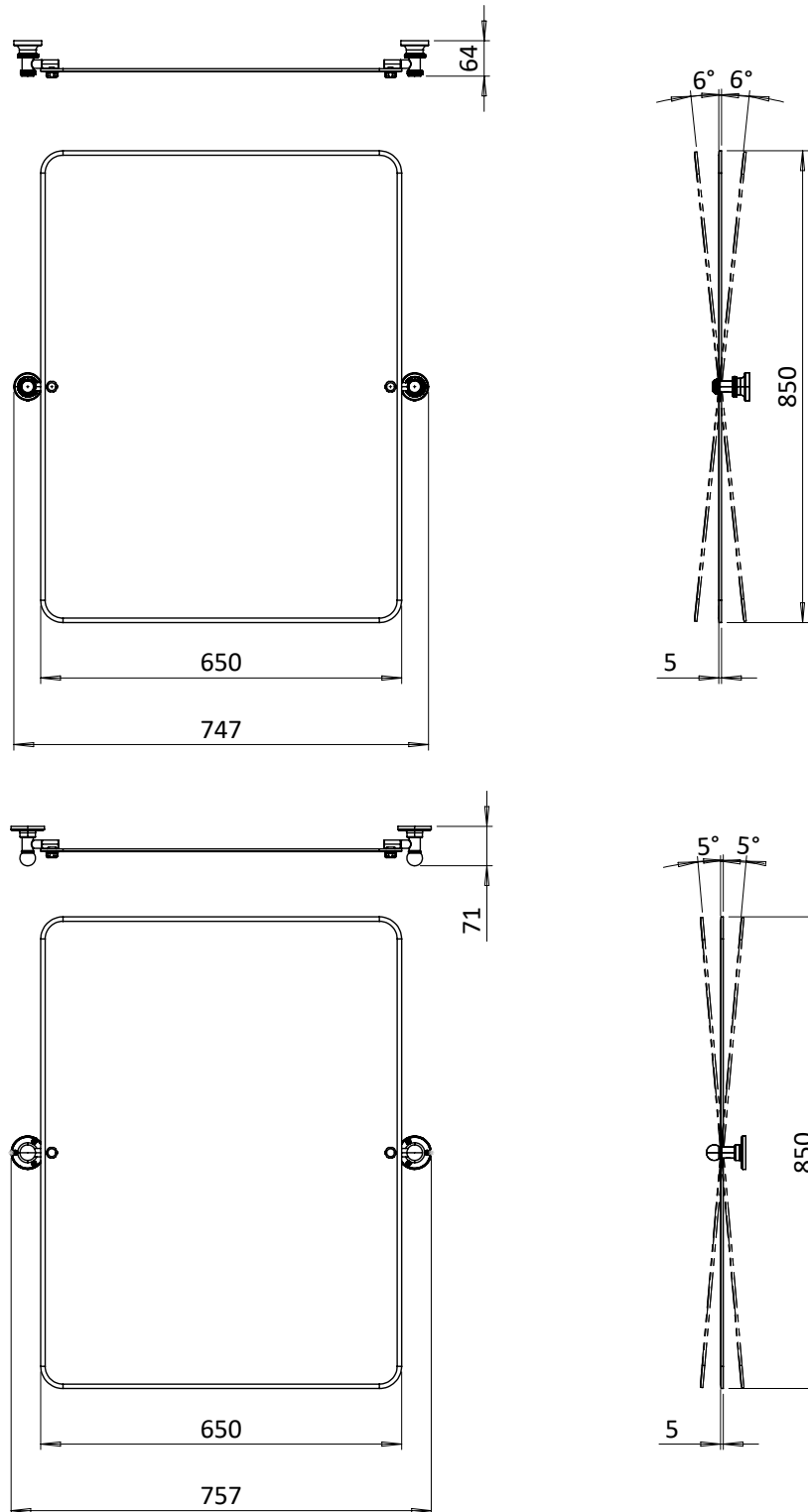
CATEGORY	Cabinets & Mirrors
WARRANTY DETAILS	5 Years
PRIMARY MATERIAL	Glass
INSTALL TYPE	Wall Mounted
PRODUCT WIDTH MM	650
PRODUCT HEIGHT MM	850
PRODUCT LENGTH MM	5
PRODUCT NET WEIGHT KG	6.47
STANDARDS	ISO 9001

HANDING MIRROR & CABINETS	Universal
TEMPERATURE CHANGING	No
SHELVES ADJUSTABLE	No
SHAVER SOCKET INCLUDED	No
DIMMABLE	No

## TECHNICAL DIMENSIONS

Dimensions in mm unless otherwise specified.

Tolerances (per material type) apply.



## SPARES LIST

Only the parts labelled are available as spares.

**NO SPARES AVAILABLE**

# PRODUCT DATA SHEET

Burlington®

PRODUCT CODE  
MI18501C

RANGE  
Burlington

DESCRIPTION  
Mirror 1850 Fixing One Pair Chrome



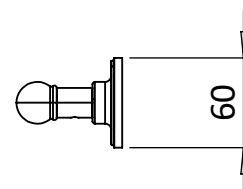
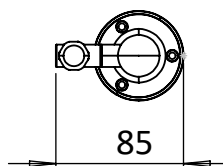
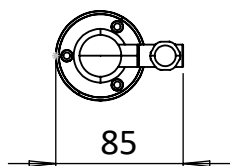
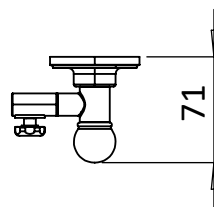
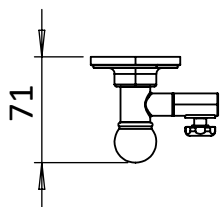
CATEGORY	Cabinets & Mirrors
WARRANTY DETAILS	2 Years
COLOUR	Chrome
FINISH APPLICATION	Electroplated
PRIMARY MATERIAL	Brass
SECONDARY MATERIAL	304 Stainless Steel
INSTALL TYPE	Wall Mounted
PRODUCT WIDTH MM	85
PRODUCT HEIGHT MM	60
PRODUCT LENGTH MM	71
PRODUCT NET WEIGHT KG	0.74
STANDARDS	ISO 9001

HANDING MIRROR & CABINETS	Universal
TEMPERATURE CHANGING	No
SHELVES ADJUSTABLE	No
SHAVER SOCKET INCLUDED	No
DIMMABLE	No

## TECHNICAL DIMENSIONS

Dimensions in mm unless otherwise specified.

Tolerances (per material type) apply.





## SPARES LIST

Only the parts labelled are available as spares.

SPARES AVAILABLE UPON REQUEST

# PRODUCT DATA SHEET



PRODUCT CODE  
MI19091C

RANGE  
Burlington

DESCRIPTION  
Mirror 1909 Fixing One Pair Chrome



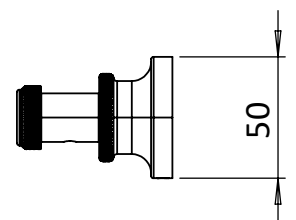
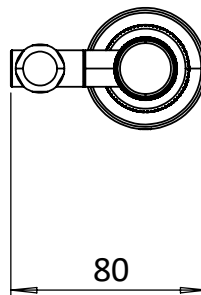
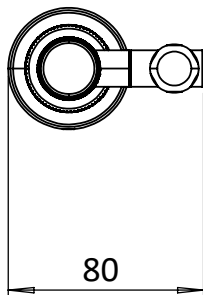
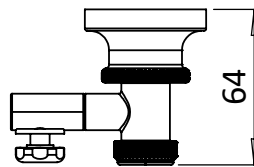
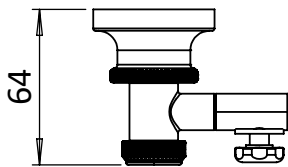
CATEGORY	Cabinets & Mirrors
WARRANTY DETAILS	2 Years
COLOUR	Chrome
FINISH APPLICATION	Electroplated
PRIMARY MATERIAL	Brass
SECONDARY MATERIAL	304 Stainless Steel
INSTALL TYPE	Wall Mounted
PRODUCT WIDTH MM	80
PRODUCT HEIGHT MM	50
PRODUCT LENGTH MM	64
PRODUCT NET WEIGHT KG	0.69
STANDARDS	ISO 9001

HANDING MIRROR & CABINETS	Universal
TEMPERATURE CHANGING	No
SHELVES ADJUSTABLE	No
SHAVER SOCKET INCLUDED	No
DIMMABLE	No

## TECHNICAL DIMENSIONS

Dimensions in mm unless otherwise specified.

Tolerances (per material type) apply.



## SPARES LIST

Only the parts labelled are available as spares.

SPARES AVAILABLE UPON REQUEST