

# INSTALLATION GUIDE

## PIVOT DOOR



### IMPORTANT

Thank you for choosing Merlyn. Please familiarise yourself with the fitting instructions before commencing fitting.

DO NOT attempt to install the product unless you can tick ALL 4 boxes as satisfactory.

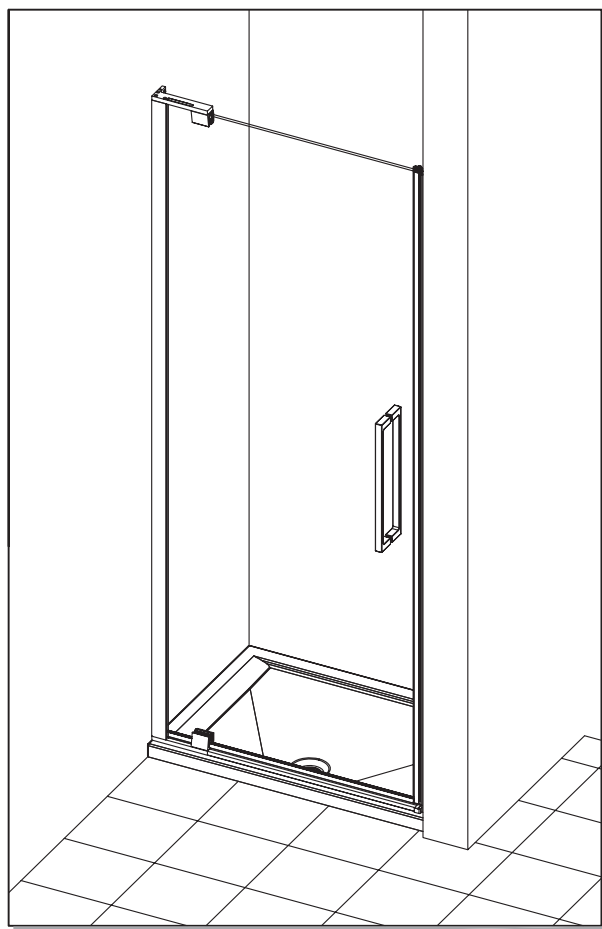
1. Check that you have the tools required.
2. Check the installation site is compatible with size of door supplied
3. Check all the enclosure components.
4. Check the installation kit is complete.

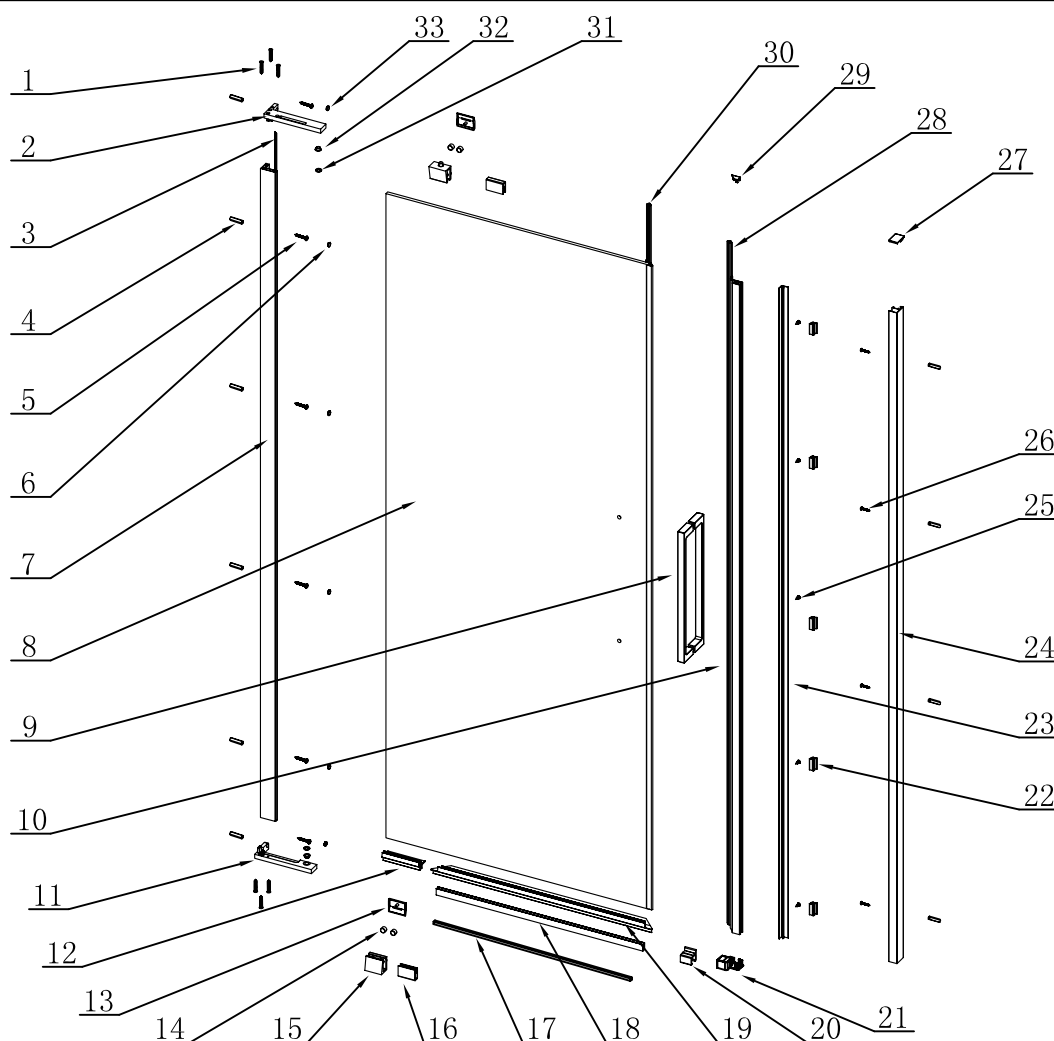
- ☐ The wall plugs supplied with the installation kit are for use in solid walls. Hollow or 'stud-partition' walls will require alternative fixings. Please consult a hard ware supplier for the correct type.
- ☐ It may also be necessary to consult your tiling supplier about the correct method for drilling your tiles.

### USE SAFETY EYEWEAR WHEN DRILLING

Any parts missing or damaged must be reported to your supplier within 5 days of purchase. Inspect shower enclosure before fitting, No claims will be acceptable after product has been installed.

ATTENTION: TAKE EXTREME CARE WHEN HANDLING GLASS, WEAR PROTECTIVE EYEWEAR AND CLOTHING . DO NOT LEAVE THE GLASS ON HARD SURFACES AND AVOID CONTACT BETWEEN THE GLASS EDGES AND HARD SURFACES OR IMPACTS DURING THE INSTALLATION

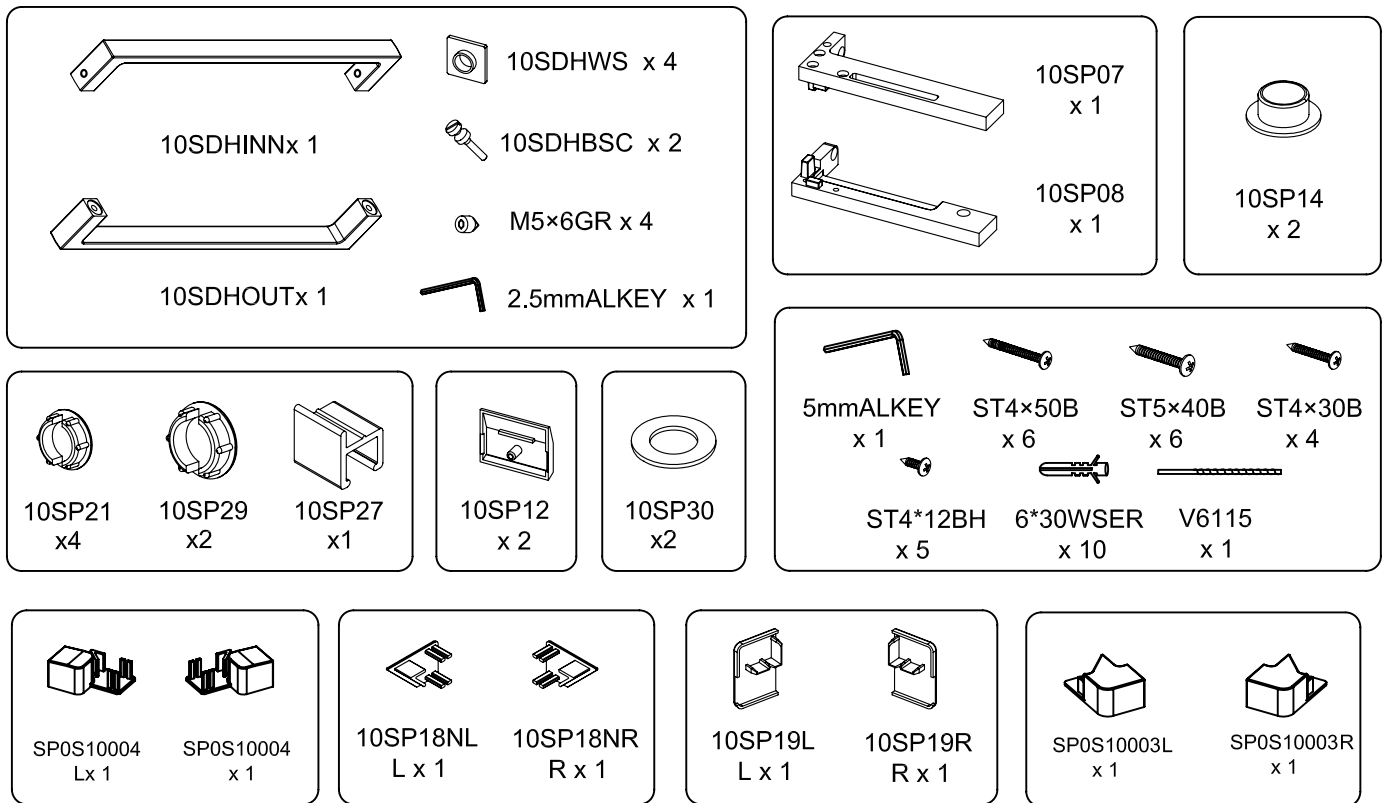




No.	Description	QTY	Part No.	No.	Description	QTY	Part No.
1	ST4*50 screws	6	ST4*50 B	18	glass protector	1	10SP28500
2	Pivot Bracket RH	1	10SP07	19	bottom water seal	1	S10002
3	Pivot upright seal	1	10SP22	20	Fitting glass spacer	1	10SP27
4	wall plugs	10	6*30WSER	21	180 degree footplate	1	S10004
5	Wall fixing screws ST5*40	6	ST5*40B	22	Nylon clip	5	10S27
6	Pivot wall profile screw cover cap	4	10SP21	23	cover strip	1	10S03AP2000
7	pivot wall profile	1	10SP01	24	Magnetic upright wall profile	1	10SP02
8	moving panel	1	A	25	Magnetic upright fixing screws ST4*12	5	ST4*12BH
9	handle	1	10SDHCMPL	26	Wall fixing screws ST4*30	4	ST4*30B
10	magnetic upright profile	1	10SP03N1997	27	Pivot magnetic wall profile top cover cap(L/R)	1	10SP19L 10SP19R
	Complete magnetic upright profile - includes 10, 21,28,29	1	10SP03N1997 SET	28	magnetic seal(fitting on magnetic upright profile)	1	10SP25
11	Pivot bracket LH	1	10SP08	29	magnetic upright profile top cover(L/R)	1	10SP18NL 10SP18NR
12	bottom water seal - short	1	S10005	30	magnetic seal(fit on the moving panel)	1	10SP25
13	Pivot block inside cover cap	2	10SP12	31		2	10SP30
14	M14*10 hex head screw	4	M14*10HHGR	32	Pivot bracket nylon gasket	2	10SP14
15	Pivot block	2	10SP09	33	Pivot bracket wall screw cover cap	2	10SP29
16	Pivot block washer	2	10SP13				
17	luna rail	1	S10001				

**Note: Further part details for fixing kit available on page 2**

## Fixing Kit Components



**Note: If fitting with side panel use S10003L/R in place of 10SP16NL/R.**

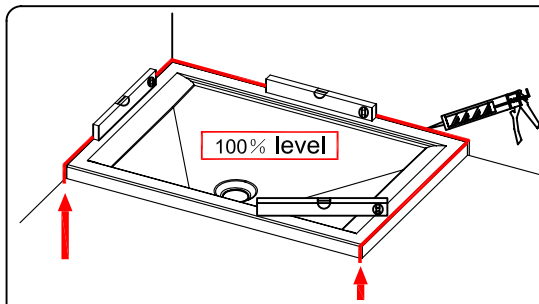
## Tools Required

- 6mm masonry drill bit
- Power drill
- Quality Silicone
- Pencil
- Tape Measure
- #2 Philips Head screw driver
- Spirit level with horizontal and vertical level indicators

## IMPORTANT - Installation site

1. Ensure the top surface of the shower tray on which the enclosure will be installed is level in every direction.
2. The tiles or other wall finishing should be effectively sealed at tray edges.
3. Tiles should extend at least to the corner of the tray and a minimum of 2.1 meters from top of the tray.

## PROCEDURE



**TRAY MUST BE 100% LEVEL IN ALL DIRECTIONS**

Ensure the shower tray is level in all directions and is properly sealed to the wall. The wall must be tiled down to the top edge of the tray. **Do not angle out bottom tile.**

**TRAY MUST BE SEALED FULLY AROUND WHERE THE TRAY MEETS THE WALL.**

### Step 1.

Fit the top and bottom pivot bracket **10SP07R/L** to the pivot wall profile **10SP01** using screws **ST4\*50B**.

**Note:** The top bracket needs to be pushed fully onto the profile but not tightened as need to be able to slot on door panel later.

### Step 2.

Step the pivot wall profile **10SP01** in 20mm from the front edge of the shower tray. Ensure the wall profile is plumb. Mark the position for fixing the wall profile to the wall (through wall profile and pivot brackets). Ensure top bracket is fully pushed onto the profile.

**Note:** Must mark the centre of the slot as extra may be needed for adjustment later on.

**Note:** Do not remove the protective plastic on outside of the wall profile until just before sealing.

### Step 3.

Drill hole (**THROUGH THE CENTRE OF THE SLOT**) with 6mm masonry drill bit and insert wall plugs **6\*30WSER**.

### Step 4.

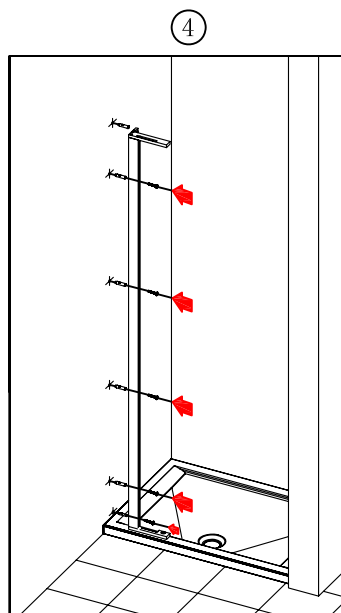
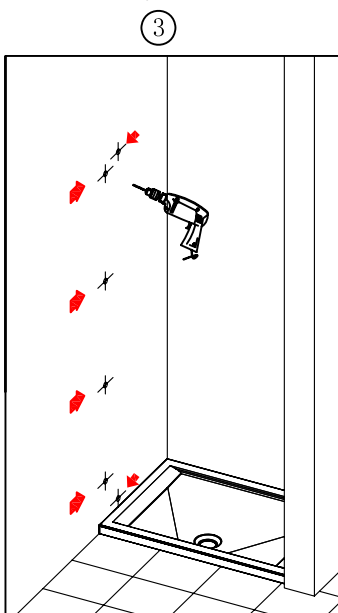
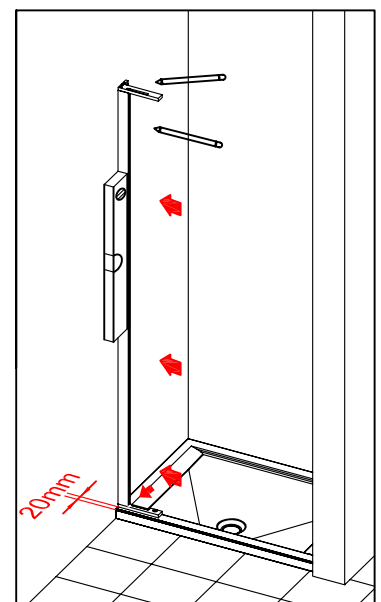
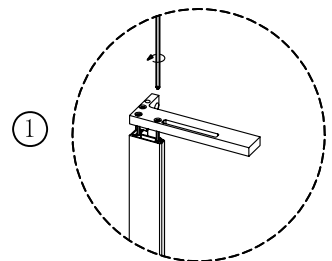
Fix the Pivot wall profile and the bottom Pivot bracket to the wall using screws **ST5\*40B**.

### Step 5.

**Note:** Remove the upright seal on the back of the glass door panel – this is only used to protect the glass in the packaging.

Fit the glass protector strip **10SP28500** to the bottom of the moving panel and move to the installation position by inserting the pivot block onto the bottom pivot bracket and repeat for the top pivot block. **IMPORTANT: ENSURE THE NYLON WASHER 10SP14 IS IN THE TOP AND BOTTOM PIVOT BRACKET!!!** Retighten the 3 screws connecting the top Pivot bracket to the profile. Remove the glass protector strip from the bottom of the moving panel. **ENSURE THE DOOR IS SECURE IN THE TOP AND BOTTOM PIVOT BRACKET- OPEN AND CLOSE TO TEST!!**

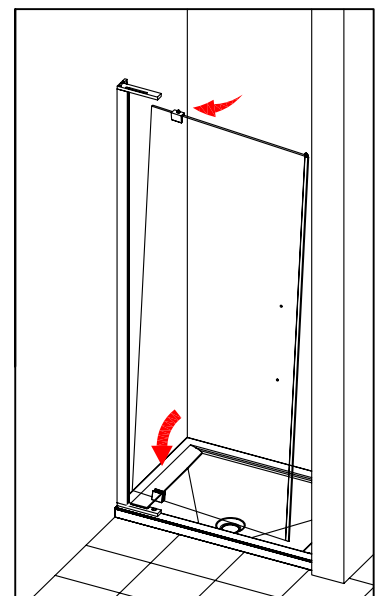
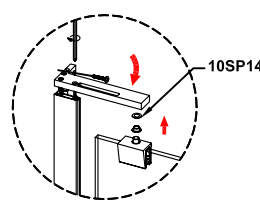
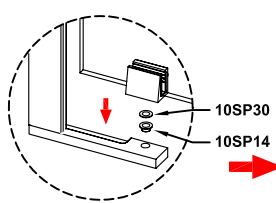
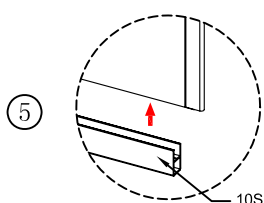
**IMPORTANT:** Ensure the glass pivot block and pivot bracket are not touching when the door is opened and closed. **ONLY** if they are touching, insert the washer **10SP30** onto the pivot block before inserting to the nylon washer **10SP14** in the pivot bracket.



②

③

④



## Step 6.

To fit the handle, insert brass screws **10SDHBSC** from the inside through the glass and attach to the outside handle **10SDHOUT** ensuring washers are between the handle and glass on both sides. **NOTE:** do not over tighten. Fix on inside part of the handle **10SDHINN** and tighten with 2.5mm hex key.

## Step 7.

Position the 180 degree footplate **SP0S10004** on the bottom of the magnet profile.

## Step 8.

Insert the magnet upright profile **10SP03N1997** into wall profile **10SP02**. Place one end of the luna rail fully into the footplate. Line up the other end with the bottom pivot bracket, mark, remove, cut any excess if necessary.

## Step 9.

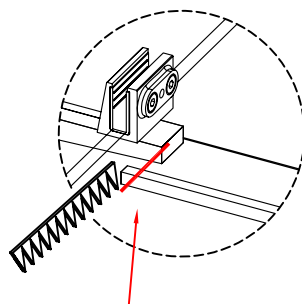
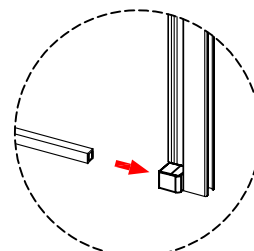
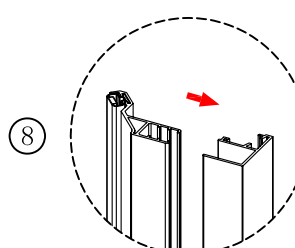
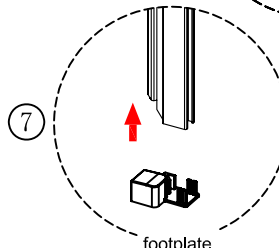
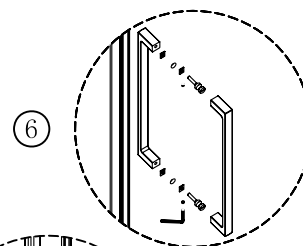
Position the glass spacer **10SP27** over the luna rail near the magnetic strip and close the door so it rests on top. The spacer allows for the glass to be adjusted in the pivot block. **Tip** – May need to loosen the pivot block hex screws **M14\*10HHGR** first with the 5mm Hex key so door sits on the spacer – hold the door handle when doing this.

## Step 10.

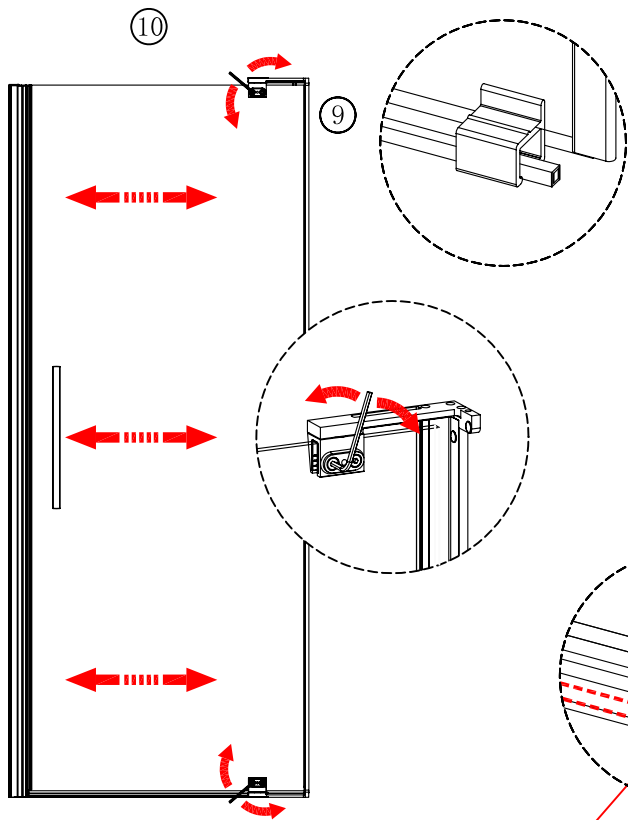
From the inside, loosen the top and bottom pivot block Hex screws using the 5mm hex key. Adjust out the moving panel and magnet profile until they align correctly. While holding the magnetic profile in place and ensuring the luna rail is parallel to the edge of the tray, mark a line, top to bottom, down the inside of the profile where it is positioned against the wall.

## Step 11.

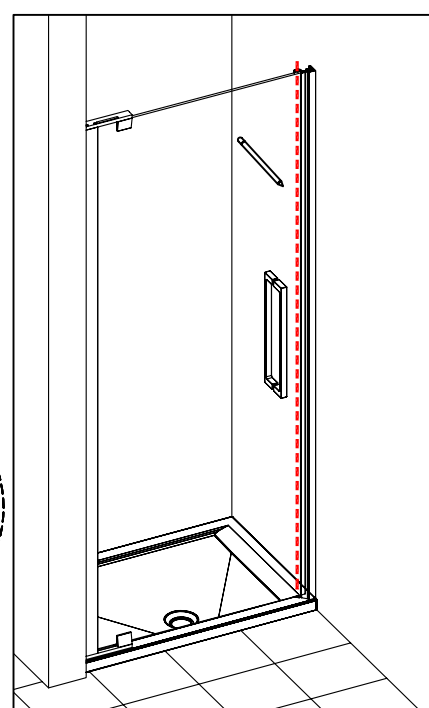
Retighten the pivot block hex screws with the 5mm Hex key (**VERY IMPORTANT - DO NOT OVERTIGHTEN**).

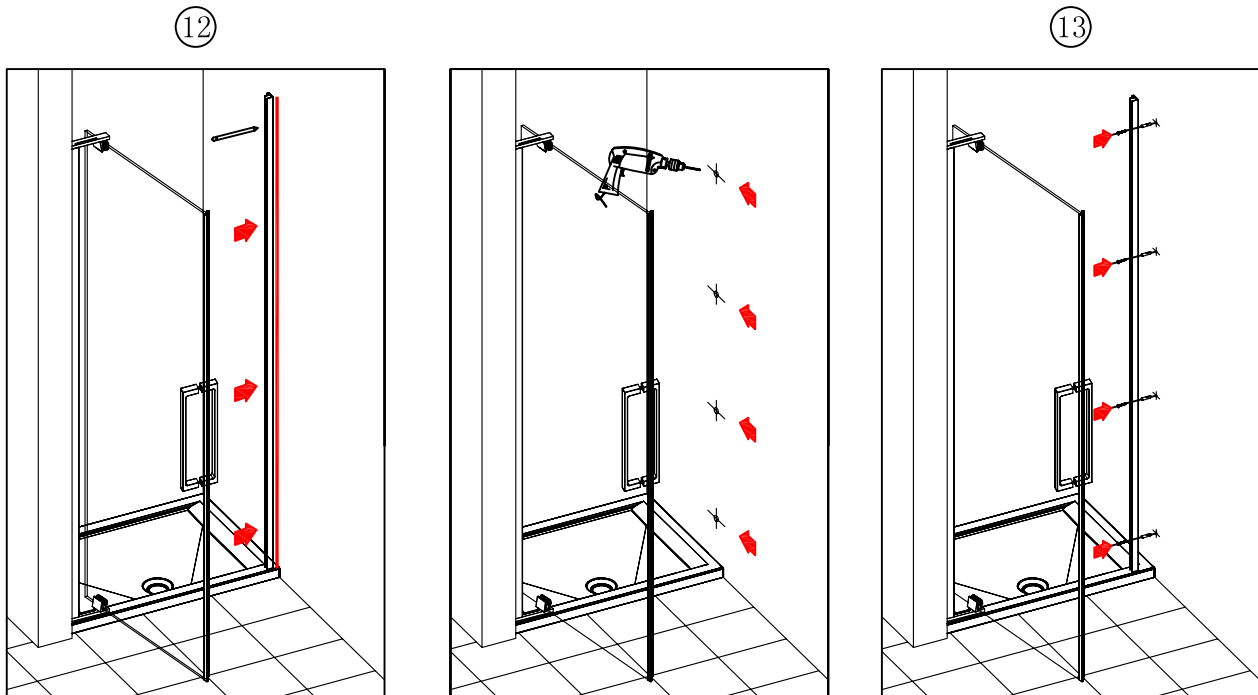


Keep the luna rail be parallel with the pivot bracket and then cut down the excess part.



the luna rail is parallel to the edge of tray





## Step 12.

Mark position for fixing the wall profile to the wall. Important: Must mark through the centre of the slots in the wall profile as the extra will be needed for adjustment later on. Drill holes **(THROUGH THE CENTRE OF THE SLOTS)** with 6mm masonry bit and insert wall plugs **6\*30WSER**.

## Step 13.

Fix the wall profile to the wall through the centre of the slot with screws **ST4\*30B**. Reinsert the magnetic profile, footplate and luna rail.

## Step 14.

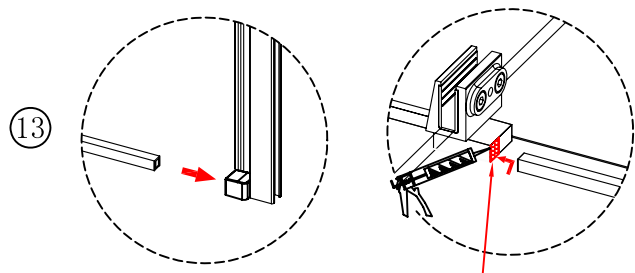
Reposition the moving panel onto the glass spacer (See step 9). Loosen hex key on the top and bottom pivot block again. Adjust the moving panel and magnet upright profile until the door closes fully. **NOTE:** After adjusting, ensure the back of the door panel seals against the upright fin on the pivot wall profile – if not adjust out the magnetic upright profile more to compensate. **NOTE:** the Pivot wall profile and magnetic wall profile can be adjusted where fixed to the wall to close any small gaps between the magnets.

## Step 15.

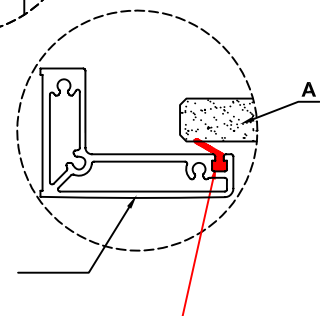
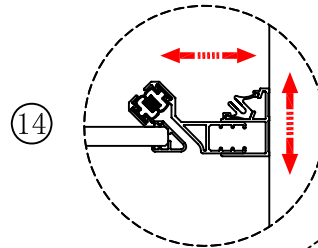
Re tighten the hex screws with 5mm hex key (**VERY IMPORTANT - DO NOT OVERTIGHTEN**).

## Step 16.

Drill hole with drill bit  $\varnothing 3.5$  **V6115** and fix with screws **ST4\*12BH**. Fix cover strip **10S03AP2000**.

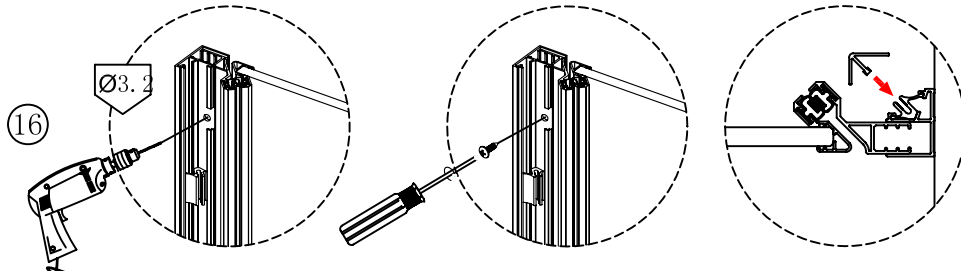


Add dab of silicone to the joint where luna rail and pivot bracket meet.



10SP01

10SP22



## Step 17.

Remove the glass spacer.

## Step 18.

To get the correct seal length, on the outside, measure from the outside of the magnetic strip on the moving panel to the edge of the bottom pivot block – Dimension A. Cut the bottom seal to this length– **DO NOT CUT THE SEAL TOO SHORT AND DO NOT CUT THE INCORRECT END (DIE CUT IN THE SEAL GOES UNDER THE MAGNETIC PROFILE ON THE DOOR)** (Dimension A should be to the outside of the magnetic profile not just the glass area!!)

Cut the short seal from the other side of the pivot block to the pivot upright profile – Dimension B.

**NOTE:** Keep the angled deflector Fin on the seal towards the inside.

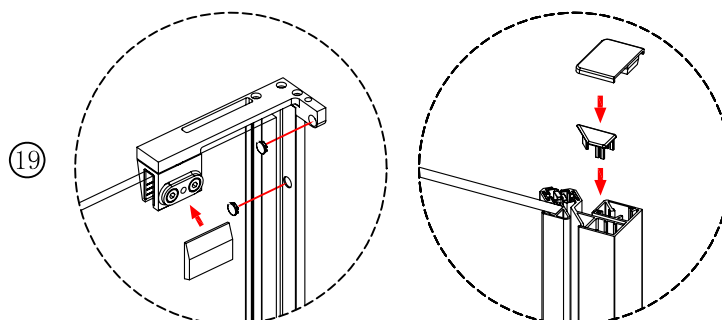
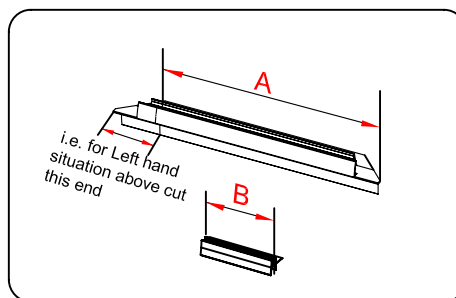
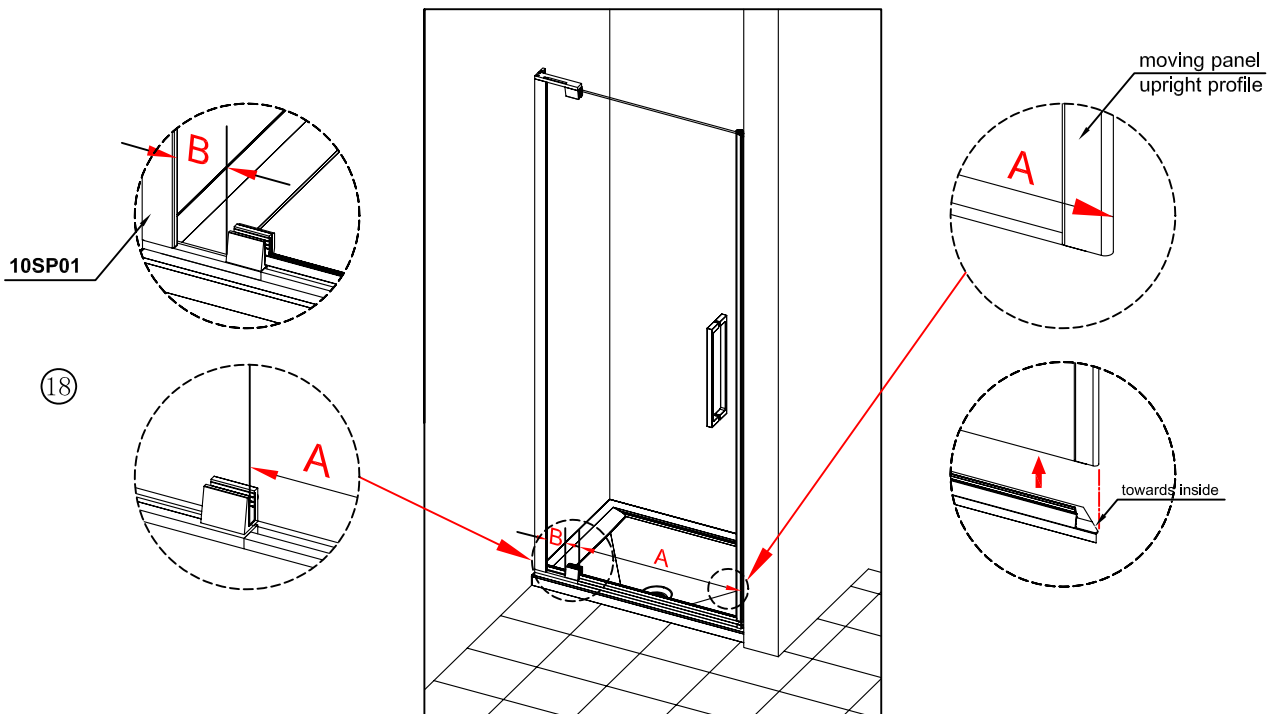
## Step 19.

Clip on magnetic upright profile cover caps **10SP18NL/R** and wall profile cover caps **10SP19L/R**.

### 10SP11.

Clip on Pivot block cover cap **10SP12** and also all screw cover caps **10SP21** and **10SP29** for the pivot wall profile

**TIP** – use a dab of silicone under cover caps to keeps on securely



## Step 20.

**IMPORTANT** - Put a dab of silicone on the end of the seal where it sits under the magnet.

**Note:** Before sealing, Remove the protective plastic on the profiles.

## Step 21.

Use a quality silicone sealant and applicator gun to seal the finished door.

### SEALING INSIDE

Seal top to bottom on the **INSIDE** between the wall profile and the wall.

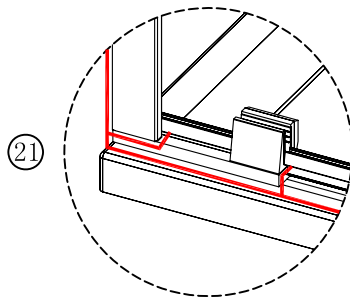
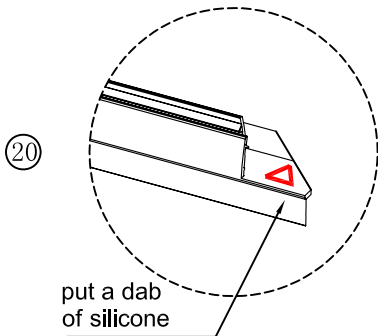
**Note:** Do not apply sealant on the inside of the tray.

### SEALING OUTSIDE

Seal only along bottom on the **OUTSIDE** between glass/rail/profile and the tray and approx 50mm up between the wall profile and the wall.

Seal overlap of the magnetic upright and wall profile 50mm up on outside.

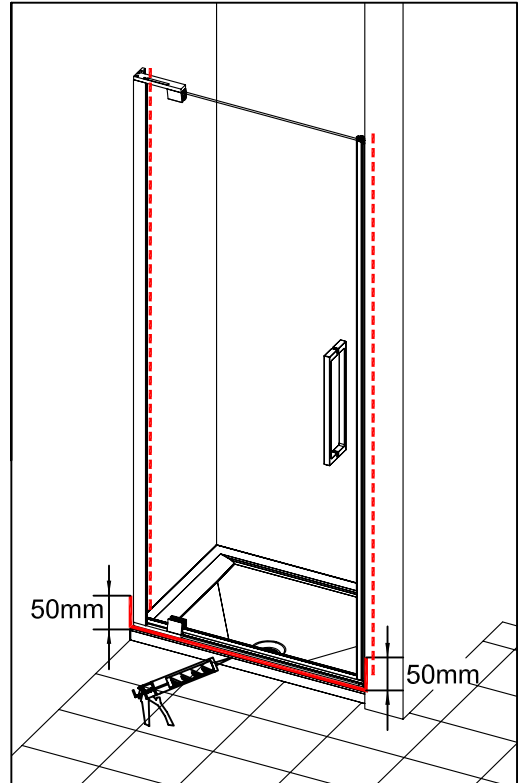
Seal the joining between the bottom pivot and profile on outside and on side.



**24 HRS**



DO NOT use the enclosure for 24 hrs after sealing.



## TROUBLE SHOOTING GUIDE

### DOOR NOT ALIGNING

1. Is the tray 100% level (See page 3)
2. Has the wall been checked at different levels to ensure consistency?
3. Is the wall profile stepped in the correct distance from the edge of the tray? (See step 2)
4. Do the finished measurements on the tray comply with the adjustment listed on the label and in the specifications book?
5. Has the wall profile, where fixed to the wall, been adjusted in or out to ensure door magnets close fully (See step 14)
6. Is there an even gap between the luna rail and the seal on the bottom of the door (See step 14)

### DOOR LEAKING

1. Is the bottom seal fitted on the moving door panel with the deflector to the inside? (See step 18)
2. Is there a dab of silicone on the bottom seal where it is positioned under the magnetic profile on the door panel (See step 20)
3. Is there a gap between the magnets? (See step 10 & 14)
4. Is the door sealed correctly (See step 21)
5. Are the TWO bottom seals on the door panel the correct length - IMPORTANT!! (See step 18)
6. Is the back of the door panel creating a seal on the fin on the inside of the pivot upright profile when the door is closed (See step 14)

### OTHERS

1. Is the door catching on the luna rail when being opened and closed (See step 9)

## SERIES 10 PIVOT DOOR

WE ARE SURE YOU WILL BE PLEASED WITH YOUR NEW MERLYN SHOWER DOOR.

Where a shower door has been installed contrary to these instructions, Merlyn cannot accept responsibility for any loss or damage, however caused, and any on-site service may incur a charge.

[www.merlynbathrooms.com](http://www.merlynbathrooms.com)

FAILURE TO FOLLOW THE INSTRUCTIONS CORRECTLY MAY INVALIDATE YOUR GUARANTEE

To download the Declaration of Performance (DOP) for this product please use the link below.

<https://merlynshowering.com/aftersales-support/dop-certs/>



# INSTALLATION GUIDE

## PIVOT DOOR SIDE PANEL



### IMPORTANT

Thank you for choosing Merlyn. Please familiarise yourself with the fitting instructions before commencing fitting.

1. Check that you have the tools required. ☐
2. Check the installation site is compatible with size of door supplied ☐
3. Check all the enclosure components. ☐
4. Check the installation kit is complete ☐

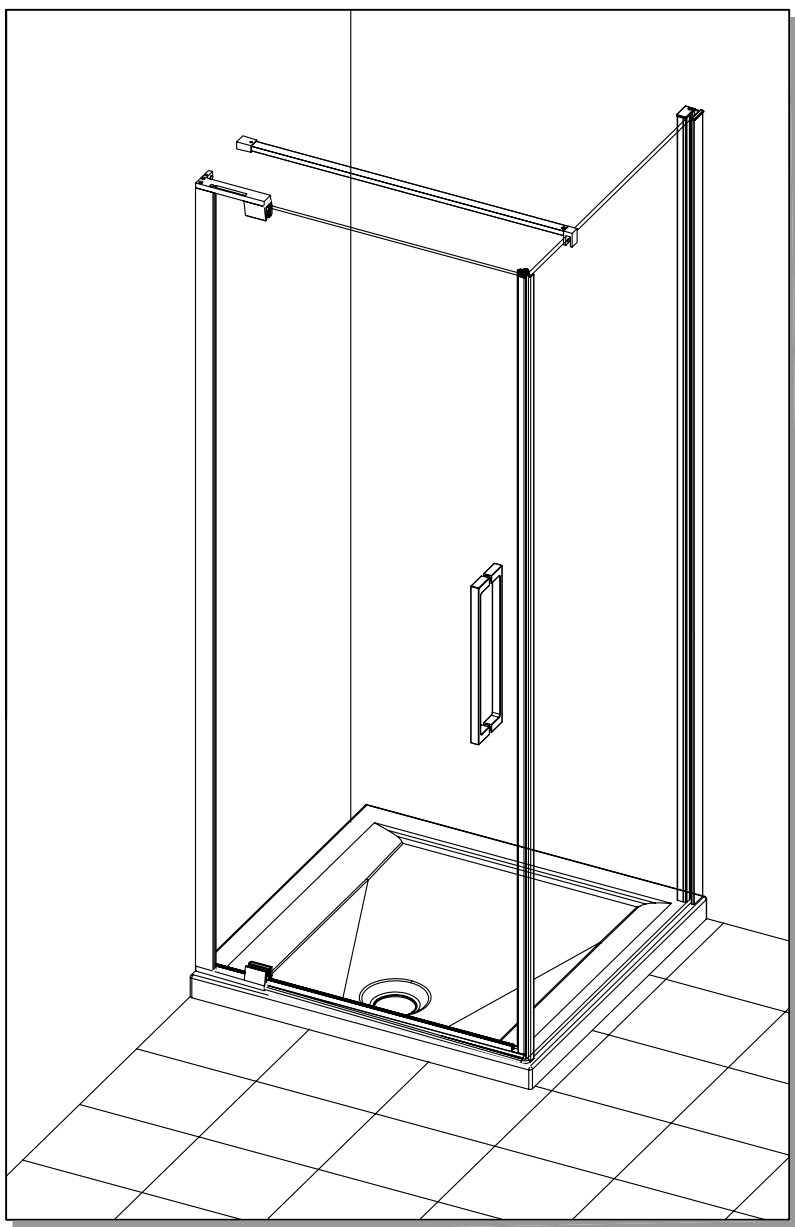
DO NOT attempt to install the product unless you can tick ALL 4 boxes as satisfactory.

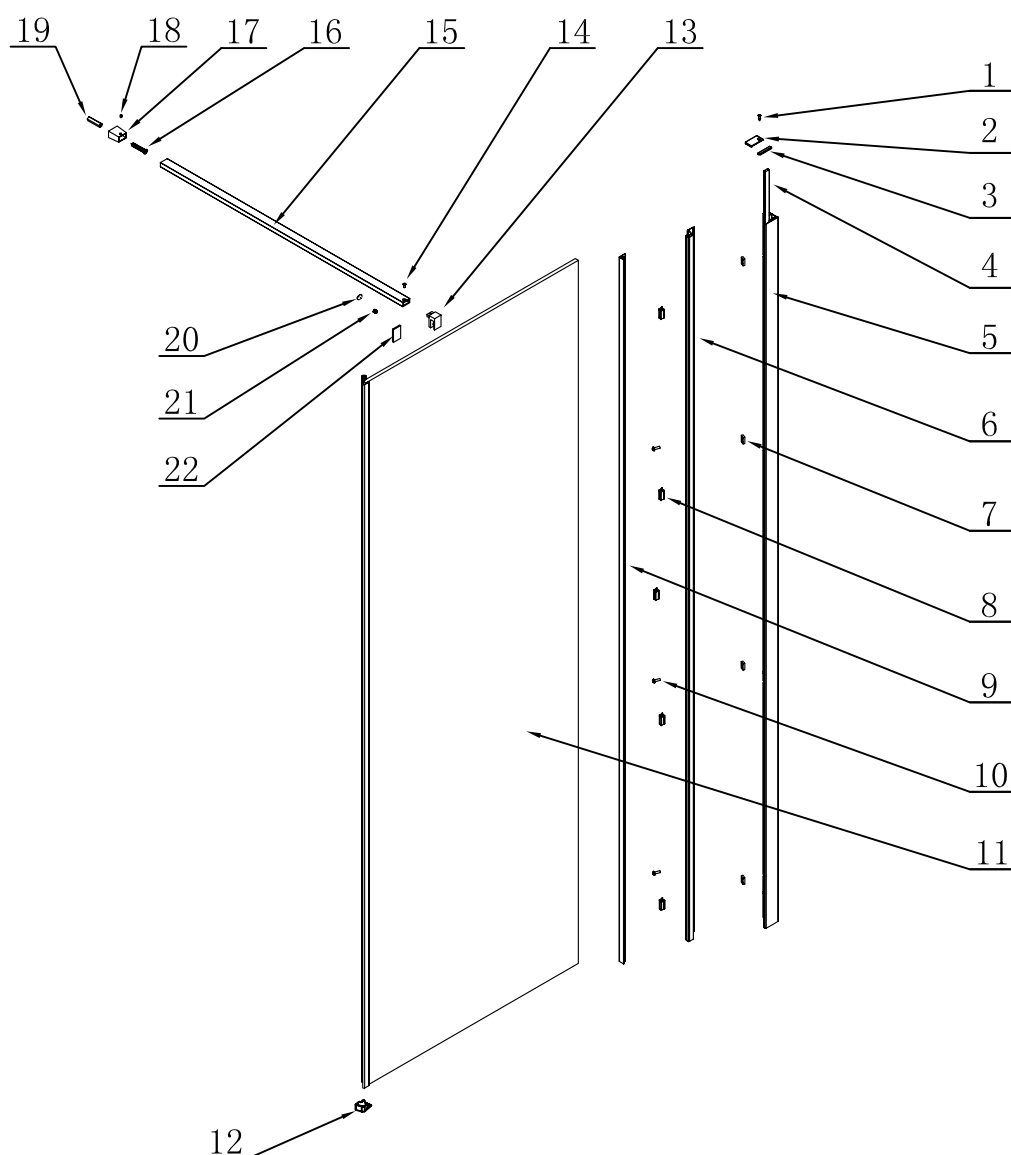
The wall plugs supplied with the installation kit are for use in solid walls. Hollow or 'stud-partition' walls will require alternative fixings. Please consult a hard ware supplier for the correct type.

It may also be necessary to consult your tiling supplier about the correct method for drilling your tiles.

**USE SAFETY EYEWEAR WHEN DRILLING**

Any parts missing or damaged must be reported to your supplier within 5 days of purchase. Inspect shower enclosure before fitting, No claims will be acceptable after product has been installed.

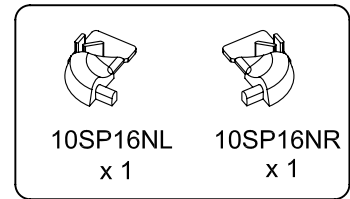
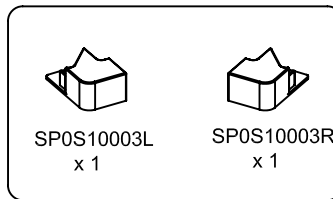
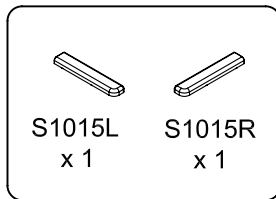
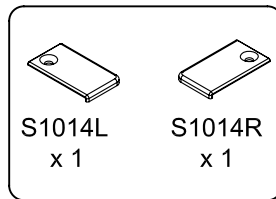
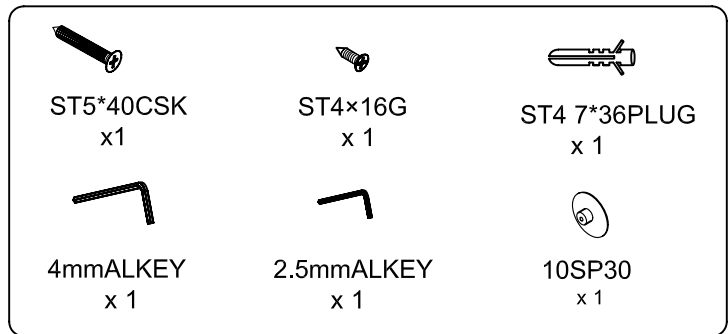
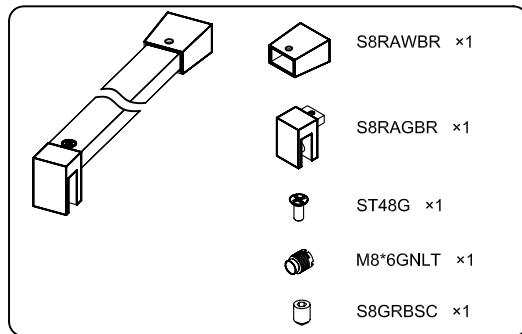




No.	Description	QTY	Part No.	No.	Description	QTY	Part No.
1	ST4*16 countersunk screw	1	ST4*16G	12	Side panel footplate	1	S10003
2	wall profile top inner cap(L/R)	1	10S14 L/R	13	Rail glass bracket	1	S8RAGBR
3	wall profile top outside cap(L/R)	1	10S15 L/R		Complete rail 1000 - includes 13,14,15,16,17,,18,19 20,21,22		SET/SET
4	Seals in wall profile	2	10S07P2000	14	Rail bracket screw	1	ST48G
	Wall profile complete 10mm 2000 - includes 1,2,3,4,5,6,7,8,9,10	1	10S06PSET	15	Rail	1	S8RA1000
5	Pivot wall profile - outer	1	10S01AP2000	16	Rail wall fixing screw ST5*40	1	ST5*40CSK
6	Pivot wall profile - inner	1	10S02AP2000	17	Wall bracket	1	S8RAWBR
7	M5 square nut	4	10S22	18	Wall bracket grubscrew	1	M5*10HHCS
8	Nylon clip	5	10S27	19	Wall plug 7*36	1	ST4 7*36PLUG
9	Pivot wall profile cover strip	1	10S03AP2000	20	Screw cover cap for top rail	1	10SP30
10	Wall profile clamping screw	4	M5*16R	21	Rail glass bracket grubscrew	1	M8*6GNLT
11	Side panel	1	A	22	Rail bracket washer	1	S8GBWSER

**Note: Further part details for fixing kit available on page 2**

## Fixing Kit Components



**Note: For square luna rail use footplate S10003L/R, for curved luna rail use 10SP16NL/R.**

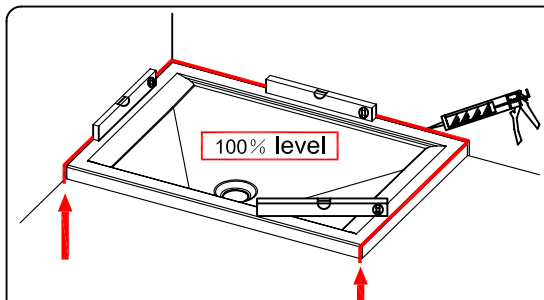
## Tools Required

- 6mm and 7mm masonry drill bit
- Power drill
- Quality Silicone
- Pencil
- Tape Measure
- #2 Philips head screw driver
- Spirit level with horizontal and vertical level indicators

## IMPORTANT - Installation site

1. Ensure the top surface of the shower tray on which the enclosure will be installed is level in every direction.
2. The tiles or other wall finishing should be effectively sealed at tray edges.
3. Tiles should extend at least to the corner of the tray and a minimum of 2.1 meters from top of the tray.

## PROCEDURE



**TRAY MUST BE 100% LEVEL IN ALL DIRECTIONS**

Ensure the shower tray is level in all directions and is properly sealed to the wall. The wall must be tiled down to the top edge of the tray. **Do not angle out bottom tile.**

**TRAY MUST BE SEALED FULLY AROUND WHERE THE TRAY MEETS THE WALL.**

### Step 1.

Please refer to step 1 – 6 in the Pivot Door instruction **BUT** instead of a 20mm step in – **USE A 30mm STEP IN TO THE PIVOT WALL PROFILE!**

### Step 2.

Step the side panel wall profile **10SWSPSET** in 30mm from the front edge of the shower tray.

### Step 3.

Ensure the wall profile is plumb. Mark the position for fixing the wall profile to the wall. **IMPORTANT** – Must mark the centre of all slots in the wall profile as the extra will be needed for adjustment later on.

### Step 4.

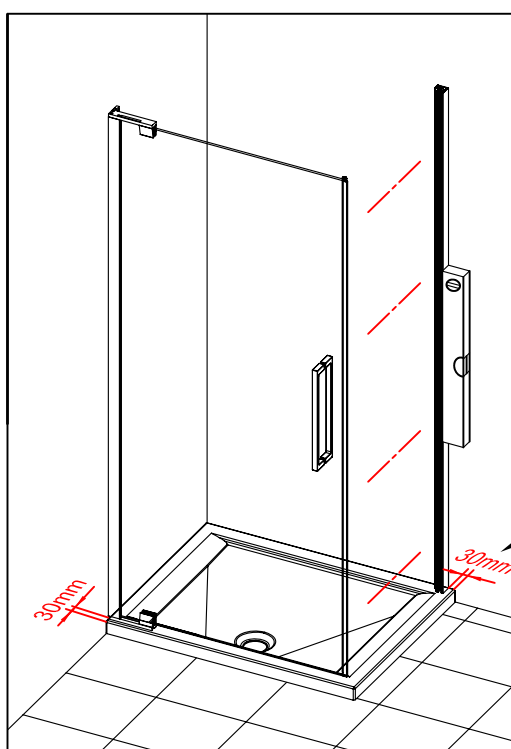
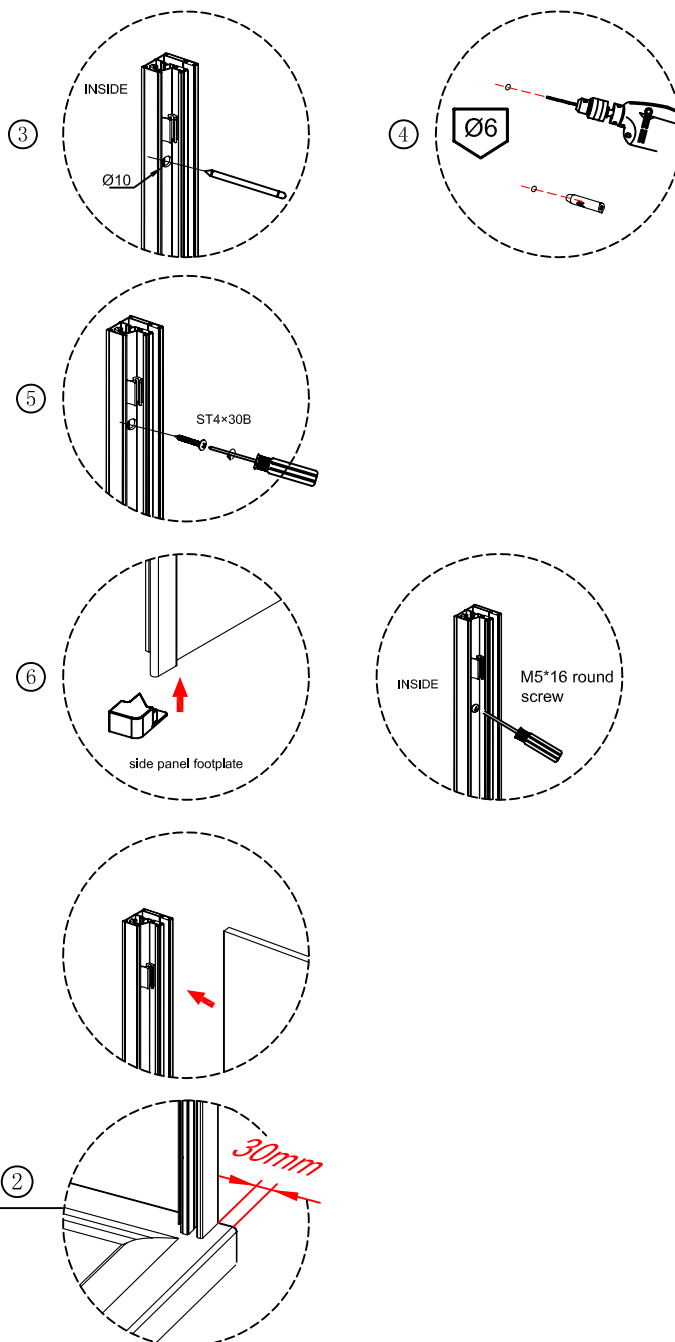
Drill hole (**THROUGH THE CENTRE OF THE SLOTS**) with 6mm masonry drill bit and insert wall plugs **6\*30WSER**.

### Step 5.

Fix the wall profile to the wall through the centre of the slots with screws **ST4\*30B**.

### Step 6.

Fit the side panel footplate **SP0S10003L/R** to the bottom of the magnetic strip on the side panel and insert the panel into the wall profile.



## Step 7.

Place one end of the luna rail fully into the footplate SP0S10003L/R. Line up the other end with the pivot bracket, mark, remove rail and cut off any excess if necessary. Apply dab of silicone to the end of the bracket and place luna rail back into footplate. Position the footplate tight to the pivot bracket.

## Step 8.

Position the glass space over the luna rail near the magnetic strip and close the door so it rests on top. The spacer allows for the glass to be adjusted in the pivot Block. **Tip** – May need to loosen the pivot block hex screws

**M14\*10HHGR** first with the 5mm Hex key so door sits on the spacer – hold the door handle when doing this.

## Step 9.

From the inside, loosen the top and bottom pivot block Hex screws using the 5mm hex key. Adjust out the moving panel and side panel until they align correctly. Ensure the luna rail and the side panel are parallel to the edge of the tray. Retighten the wall profile clamping screw **M5\*16R** and clip luna rail onto the side panel footplate **SP0S10003L/R**.

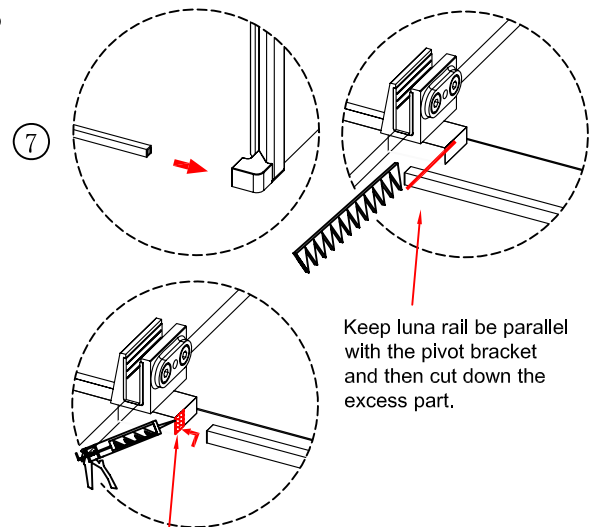
## Step 10.

The Pivot wall profile and side panel wall profile can be adjusted where fixed to the wall to close any gaps between the magnets. Adjust side panel wall profile first.

**IMPORTANT:** After adjusting, ensure the back of the door side panel seals against the upright fin on the pivot wall profile.

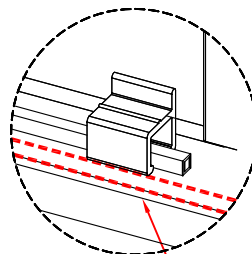
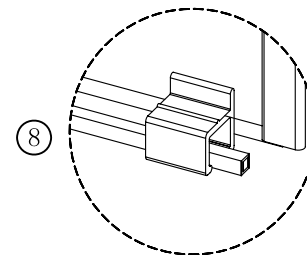
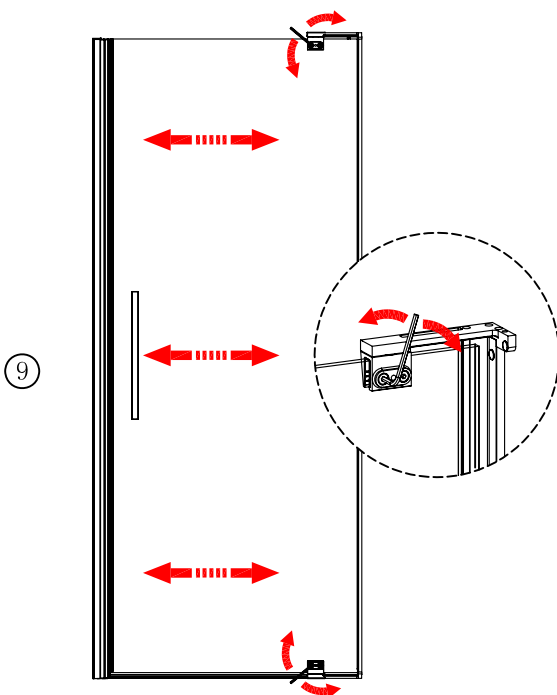
## Step 11.

Retighten the pivot block hex screws with the 5mm Hex key (**VERY IMPORTANT - DO NOT OVERTIGHTEN**) and fix cover strip **10S03AP2000**.

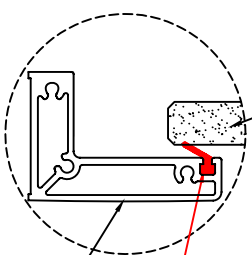
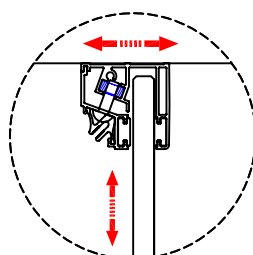
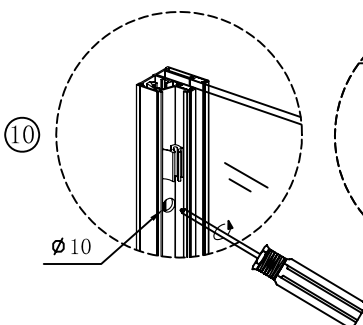
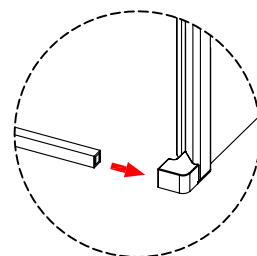
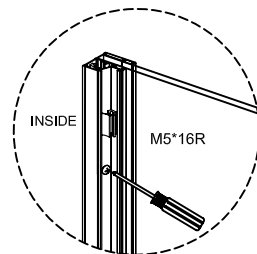


Keep luna rail be parallel with the pivot bracket and then cut down the excess part.

Add dab of silicone to the joint where luna rail and pivot bracket meet.

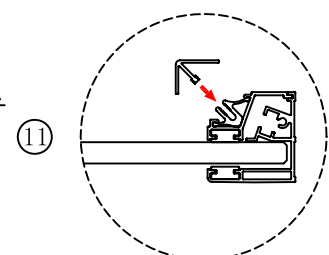


the luna rail is parallel to the edge of tray



10SP01

10SP22



## Step 12.

Remove the glass spacer.

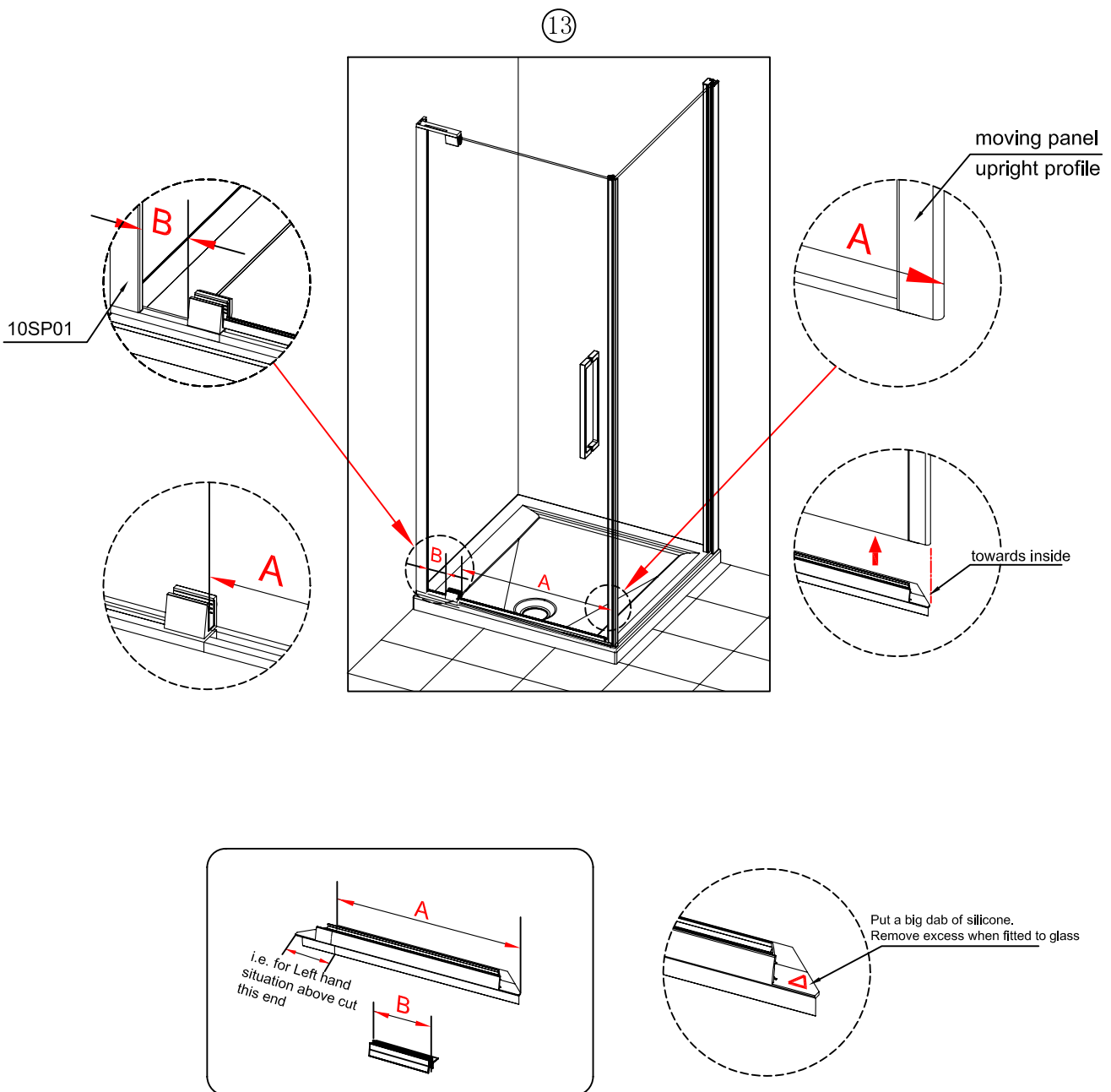
## Step 13.

To get the correct seal length, on the outside, measure from the outside of the magnetic strip on the moving panel to the edge of the bottom pivot block – Dimension A. Cut the bottom seal to this length – **DO NOT CUT THE SEAL TOO SHORT AND DO NOT CUT THE INCORRECT END (DIE CUT IN THE SEAL GOES UNDER THE MAGNETIC PROFILE ON THE DOOR)** (Dimension A should be to the outside of the magnetic profile not just the glass area!!)

Cut the short seal from the other side of the pivot block to the pivot upright profile – Dimension B.

**NOTE:** Keep the angled deflector Fin on the seal towards the inside.

**IMPORTANT** - Put a dab of silicone on the end of the seal where it sits under the magnet.



## Step 14.

Position the glass bracket **S8RAGBR** onto the side panel ensuring all washers are present.

## Step 15.

With the wall bracket **S8RAWBR** on the rail, level and mark position for the bracket on the wall.

**NOTE:** Ensure the back of the door panel does not hit the rail when being opened.

## Step 16.

Remove the bracket and mark position for fixing to the wall.

Drill hole with 7mm masonry bit and insert wall plug **ST4 7\*36PLUG**. Fix the wall bracket to the wall with screw **ST5\*40CSK**.

Reposition rail into the wall bracket and onto the side panel. Secure into wall bracket with 2.5mm Hex Key. Fix to side panel using screw **M8\*6GNLT** with 4mm hex key and cover the cap **10SP30**. **Note** - Do not over tighten.

## Step 17.

Clip on magnetic upright profile cover caps **10SP18NL/R** Also clip on top pivot bracket cover caps **10SP11**.

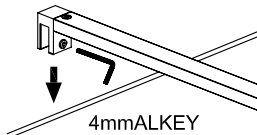
Clip on Pivot block cover cap **10SP12** and also all screw cover caps **10SP21** and **10SP29** for the pivot wall profile.

**TIP** – use a dab of silicone under cover caps to keeps on securely

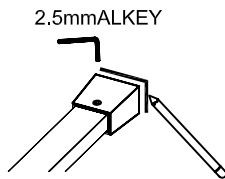
## Step 18.

Fix the wall profile cover caps **10S14L/R** and **10S15L/R** to side panel wall profile using screw **ST4\*16G**.

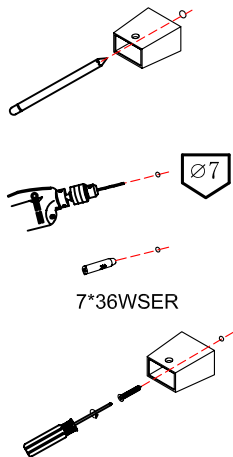
14



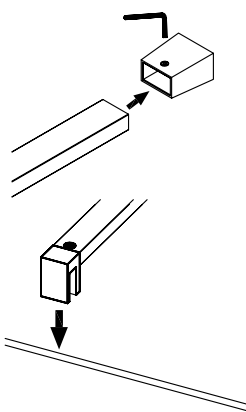
15



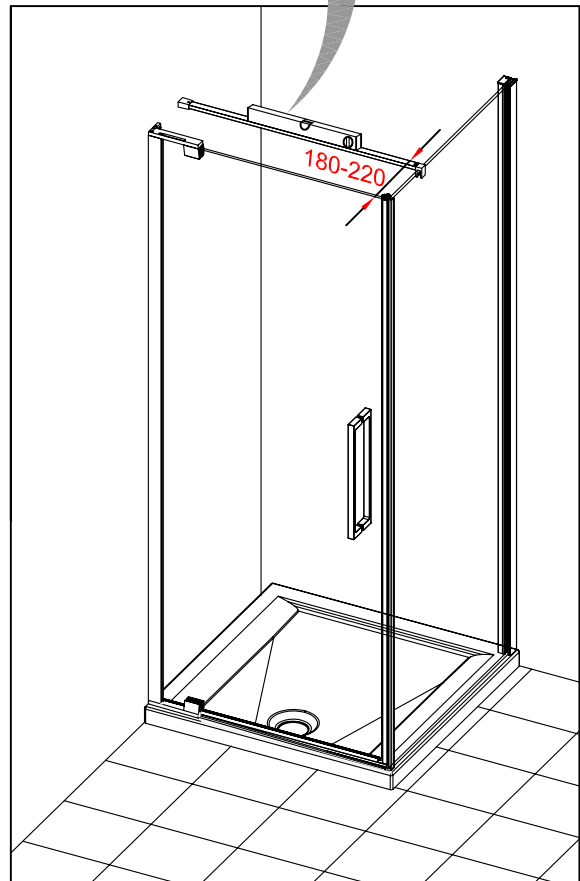
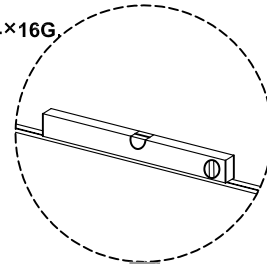
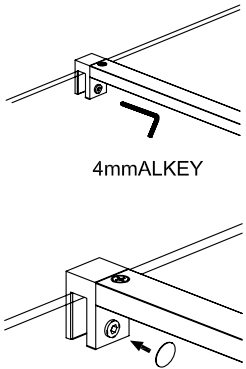
16



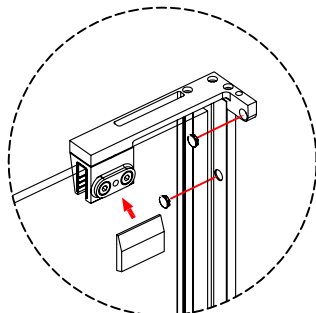
2.5mmALKEY



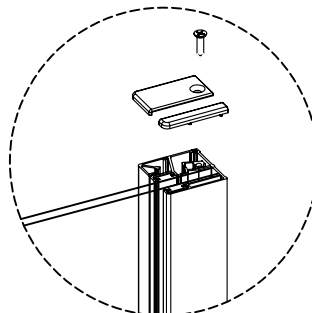
4mmALKEY



17



18



**Step 19.**

**Note:** Before sealing, Remove the protective plastic on the profiles.

**Step 20.**

Use a quality silicone sealant and applicator gun to seal the finished door.

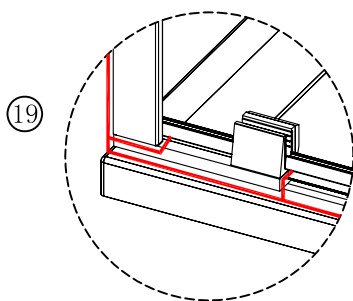
**SEALING INSIDE**

Seal top to bottom on the **INSIDE** between the wall profile and the wall. **Note:** Do not apply sealant on the inside of the tray.

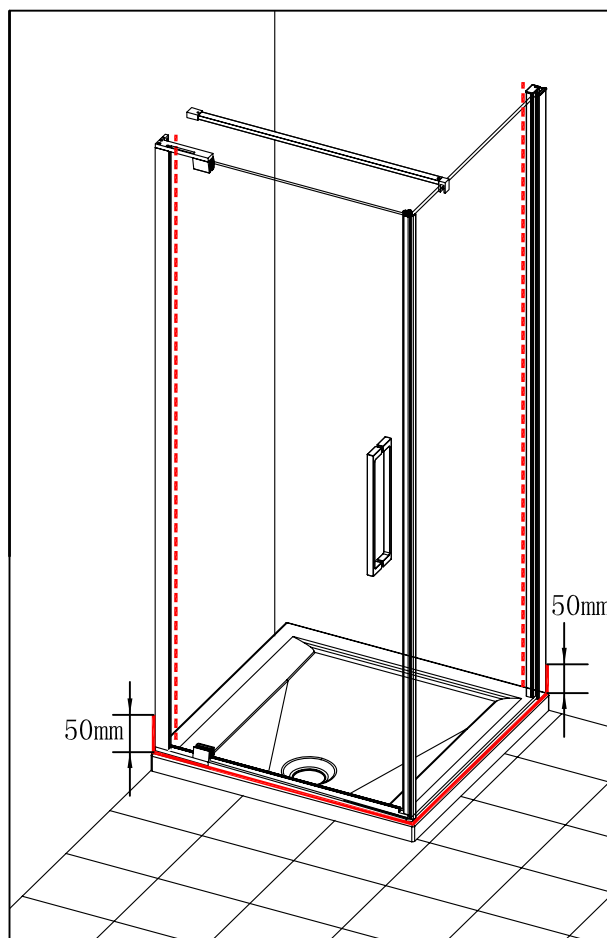
**SEALING OUTSIDE**

Seal only along bottom on the **OUTSIDE** between the glass/rail/profile and the tray and approx 50mm up between the wall profile and the wall

Seal the joining between the bottom pivot and profile on outside and on side.

**24 HRS**

DO NOT use the enclosure for 24 hrs after sealing

**TROUBLE SHOOTING GUIDE****DOOR NOT ALIGNING**

1. Is the tray 100% level (See page 3)
2. Has the wall been checked at different levels to ensure consistency?
3. Is the wall profile stepped in the correct distance from the edge of the tray? (See step 2)
4. Do the finished measurements on the tray comply with the adjustment listed on the label and in the specifications book?
5. Has the wall profile, where fixed to the wall, been adjusted in or out to ensure door magnets close fully (See step 10)
6. Is there an even gap between the luna rail and the seal on the bottom of the door (See step 8)

**DOOR LEAKING**

1. Is the bottom seal fitted on the moving door panel with the deflector to the inside? (See step 13).
2. Is there a dab of silicone on the bottom seal where it is positioned under the magnetic profile on the door panel (See step 13)
3. Is there a gap between the magnets? (See step 9 & 10)
4. Is the door sealed correctly (See step 20)
5. Are the TWO bottom seals on the door panel the correct length - IMPORTANT!! (See step 13)
6. Is the back of the door panel creating a seal on the fin on the inside of the pivot upright profile when the door is closed (See step 10)

**OTHERS**

1. Door is catching on the luna rail when being opened and closed (See step 8)
2. Door hitting the top rail – Is the rail on the side panel too close to the door panel and is it level? (See page 6)
3. Side panel moving when door closes – is the rail fixed correctly in the wall bracket and to the glass (See page 6)
4. Side panel moving on the tray when the door is closed – is the panel correctly sealed to the tray? (See page 20)

**SERIES 10 PIVOT DOOR SIDE PANEL**

WE ARE SURE YOU WILL BE PLEASED WITH YOUR NEW MERLYN SHOWER DOOR.

Where a shower door has been installed contrary to these instructions, Merlyn cannot accept responsibility for any loss or damage, however caused, and any on-site service may incur a charge.

[www.merlynbathrooms.com](http://www.merlynbathrooms.com)

FAILURE TO FOLLOW THE INSTRUCTIONS CORRECTLY MAY INVALIDATE YOUR GUARANTEE