

PIVOT DOOR



6
Series

IMPORTANT

Thank you for choosing Merlyn. Please familiarise yourself with the fitting instructions before commencing fitting.

1. Check that you have the tools required. ☐
2. Check that the installation site is compatible with size of door supplied ☐
3. Check all the enclosure components. ☐
4. Check that the installation kit is complete ☐

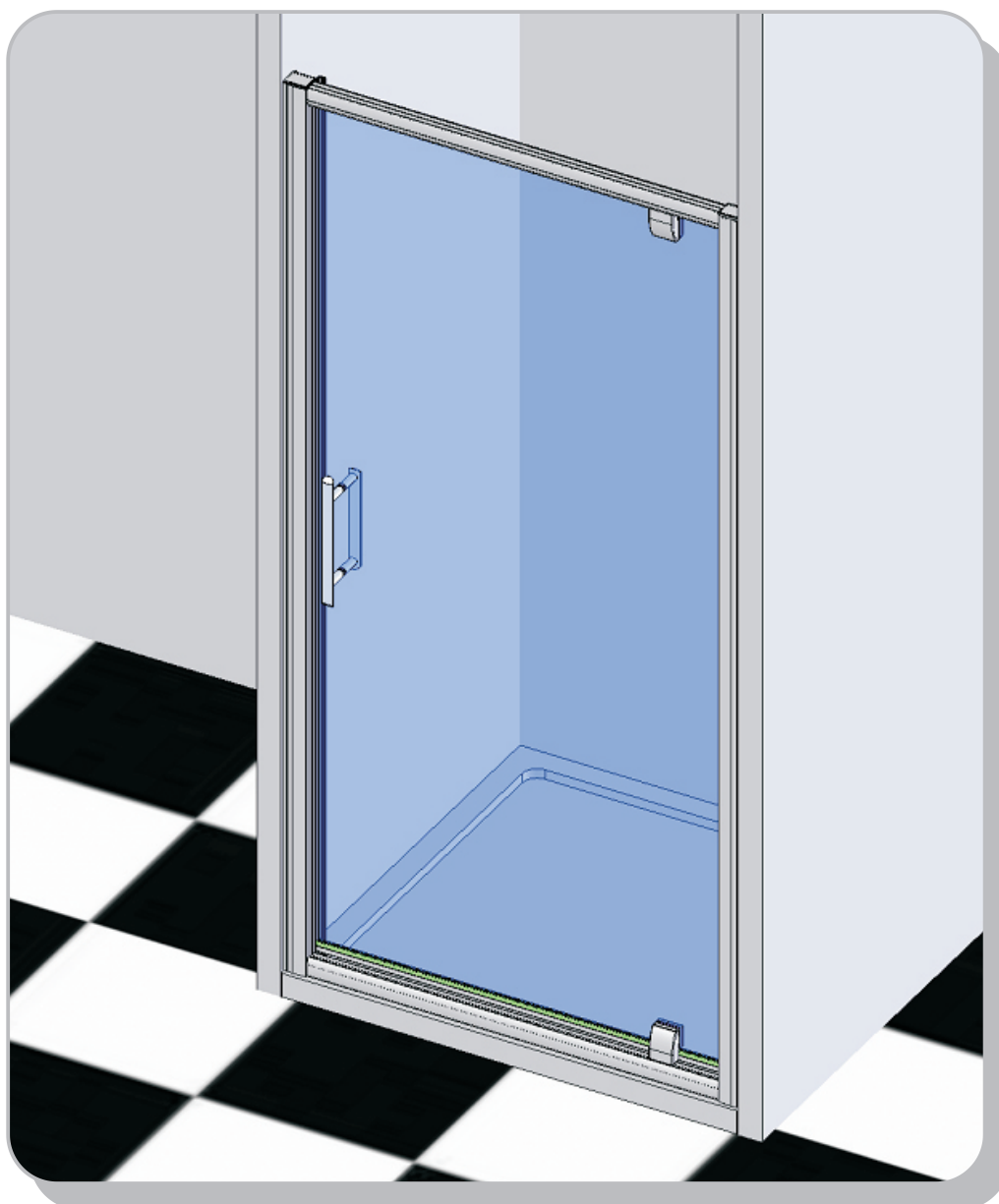
DO NOT attempt to install the product unless you can tick ALL 4 boxes as satisfactory.

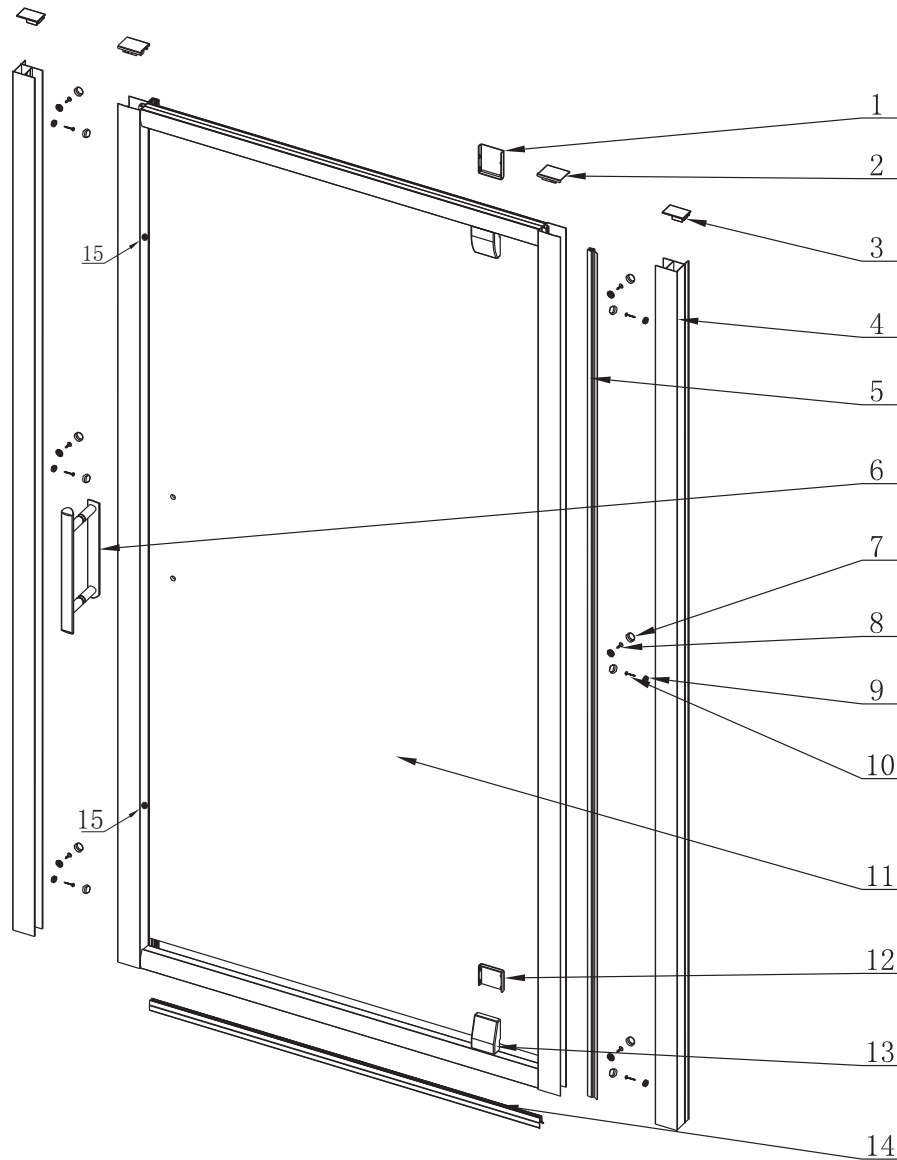
The wall plugs supplied with the installation kit are for use in solid walls. Hollow or 'stud-partition' walls will require alternative fixings. Please consult a hardware supplier for the correct type.

It may also be necessary to consult your tiling supplier about the correct method for drilling your tiles.

USE SAFETY EYEWEAR WHEN DRILLING

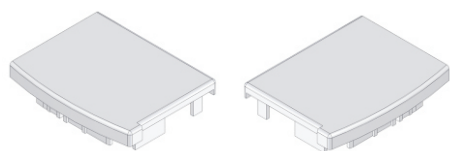
Any parts missing or damaged must be reported to your supplier within 5 days of purchase. Inspect shower enclosure before fitting. No claims will be acceptable after product has been installed.





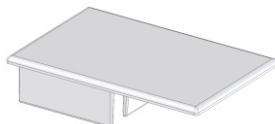
No.	Description	QTY	Part No.	No.	Description	QTY	Part No.
1	Inner pivot cap top	1	S6PV019	9	Screw cover cap clip	12	V2114
2	Top cover cap L/R	2	S6PV021L/R	10	ST4×30 B head screw	6	V4111
3	Wall profile cover cap	2	V2104	11	Pivot door	1	A
4	Wall profile	2	S6S01	12	Inner pivot cap bottom	1	S6PV020
5	Upright seal	1	S6PV006	13	Outer pivot cap	2	S6PV017
6	Handle	1	S6HDLE	14	Bottom water seal	1	S6PV011
7	Screw cover cap	12	V2115	15	Ball catch	2	S6PV018
8	Flat head screw ST4×12	6	V4110				

Note: Further part details for fixing kit available on page 2

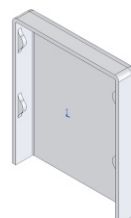


S6PV021R
X1

S6PV021L
X1



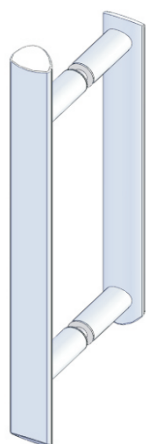
V2104
X2



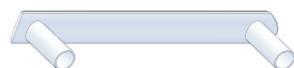
S6PV019
X1



S6PV020
X1



S6HDLE
X1



S6HDLEP1 X1



S6HDLEP2 X1



S6HDLEP3 X2



S6HDLEP4 X2



S6HDLEP5 X4



S6HDLEP6 X2



S6HDLEP7 X1



V2115
X12



V2114
X12



V6113
X6



V4111
X6



V4110
X6



V6115
X1



3mmALKEY
X1

Tools Required

- 6mm masonry drill bit
- Power drill
- Quality Silicone
- Pencil
- Tape Measure
- Flat head screw driver
- #2 Philips head screw driver
- Spirit level with horizontal and vertical level indicators

IMPORTANT - Installation site

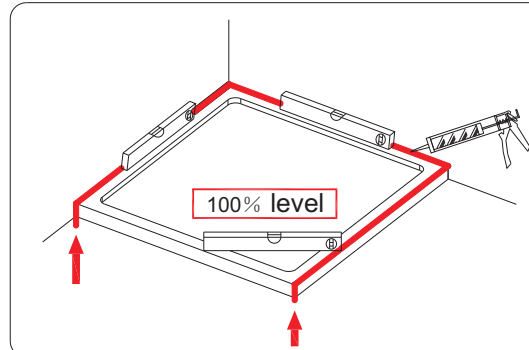
1. Ensure the top surface of the shower tray on which the enclosure will be installed is level in every direction.
2. The tiles or other wall finishing should be effectively sealed at the tray edges.
3. Tiles should extend at least to the corners of the tray and a minimum of 2.0 metres from the top of the tray.

PROCEDURE

TRAY MUST BE 100% LEVEL IN ALL DIRECTIONS

Ensure the shower tray is level in all directions and is properly sealed to the wall. The wall must be tiled down to the top edge of the tray. **Do not angle out bottom tile.**

TRAY MUST BE SEALED FULLY AROUND WHERE THE TRAY MEETS THE WALL.



Step 1.

Step in wall profile 20mm from the front edge of the shower tray. Ensure wall profile is plumb.

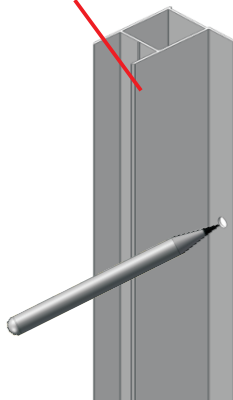
Do not silicone behind wall profile to wall, see sealing section.

Step 2.

Mark the position for fixing the wall profile to wall. (**Do not fix the wall profile yet**)

2

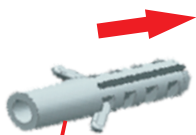
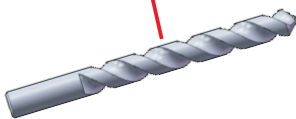
S6S01



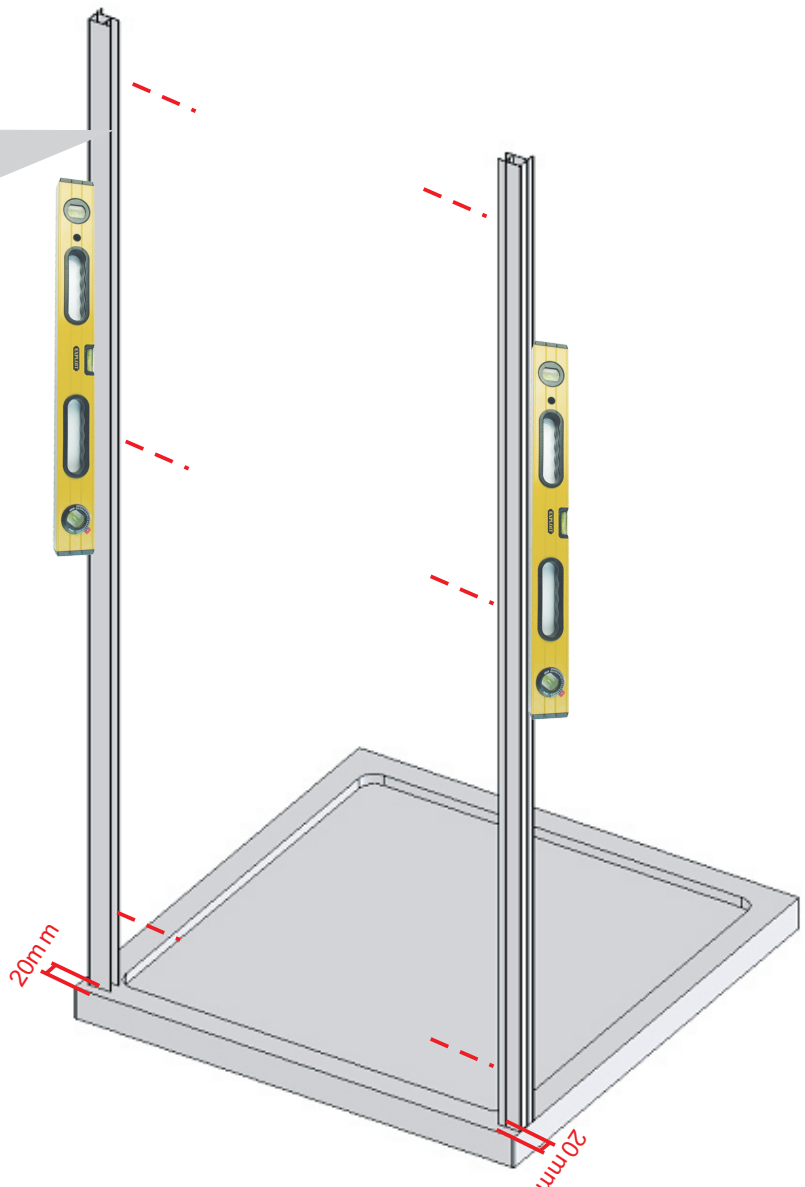
Inside

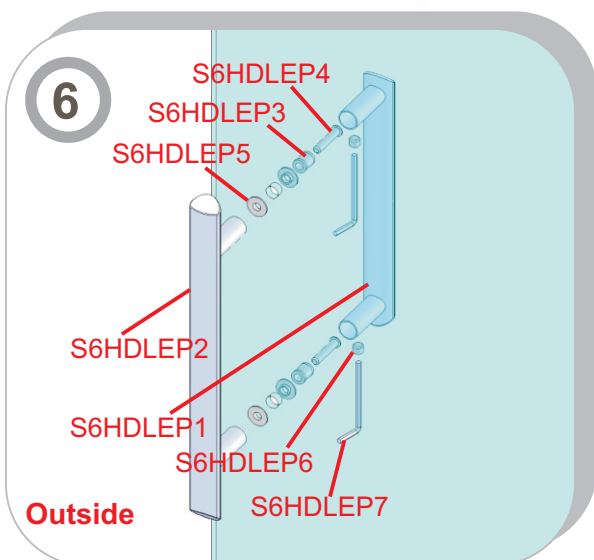
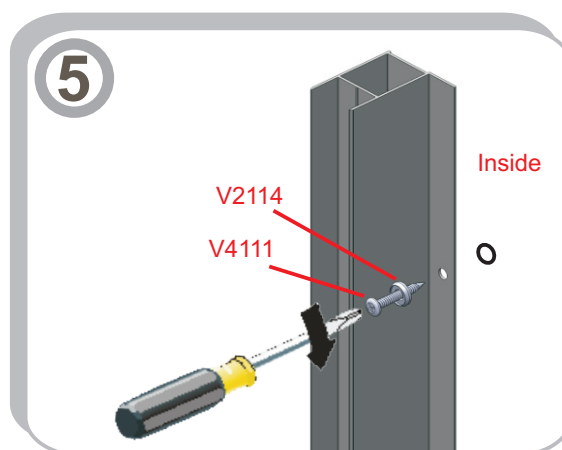
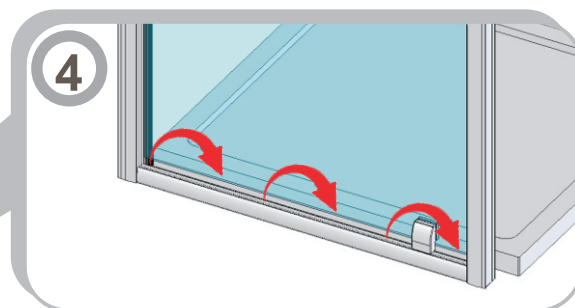
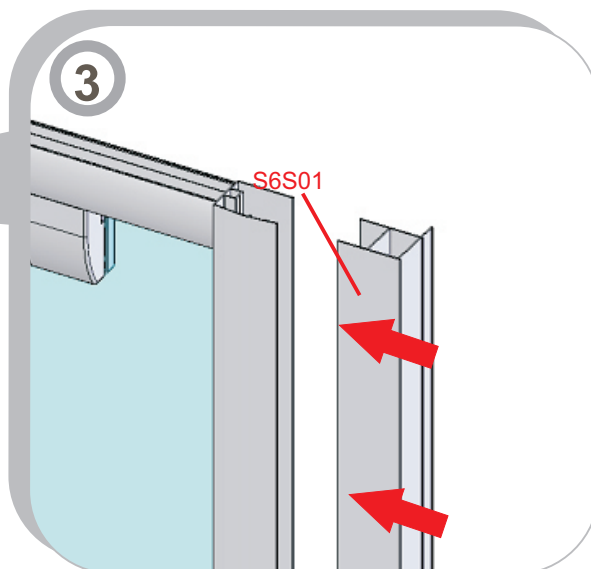
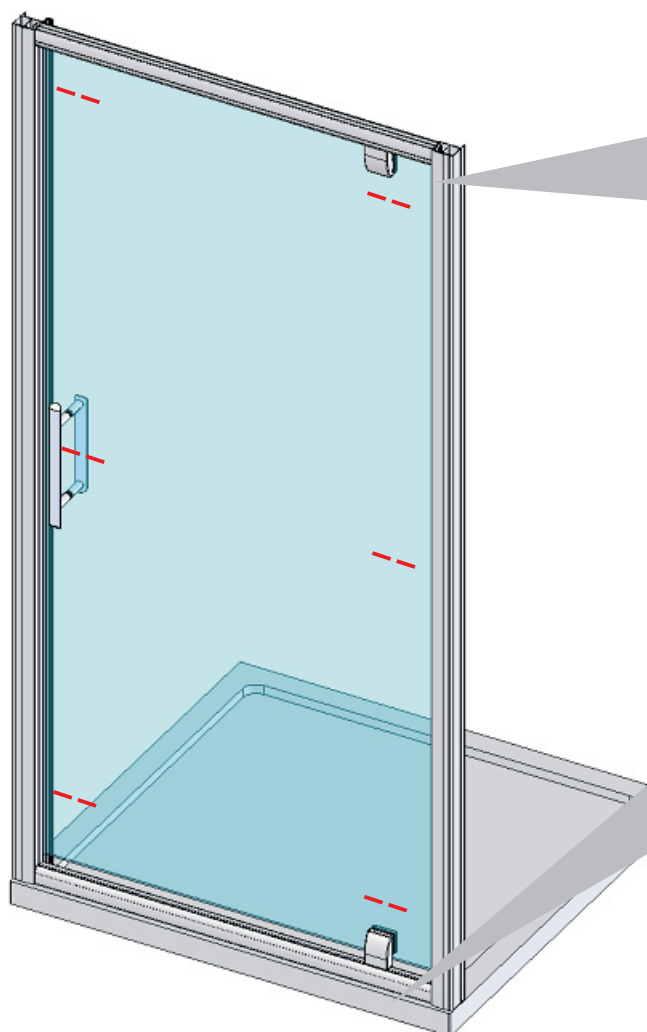


Ø6mm masonry
drill bit



V6113



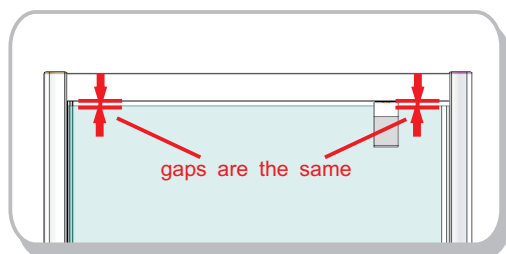


Step 3.
Insert the wall profiles into both sides of door frame.

Step 4.
Position the door onto tray.

Step 5
Fix the wall profiles to the wall using **V4111**.

NOTE: If you are not close to the minimum adjustment, fix the wall profile to the wall on the magnetic upright profile side first.



IMPORTANT: Do not go on to Step 10 until you confirm the moving panel is square in the door frame. Tip: Use packaging spacer if required to help.

Step 7.

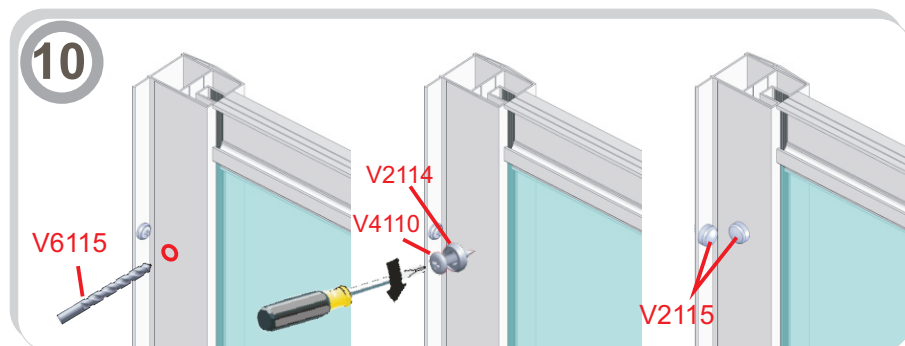
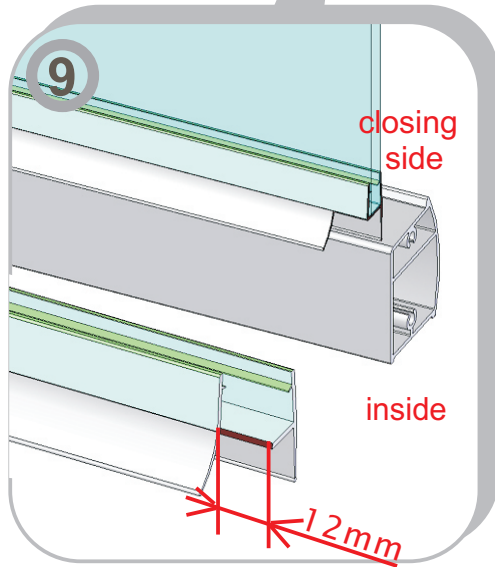
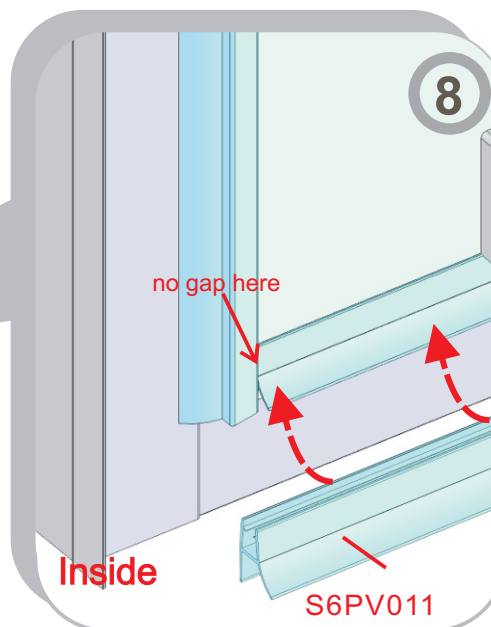
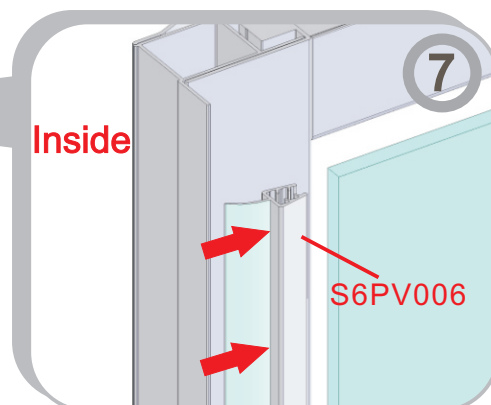
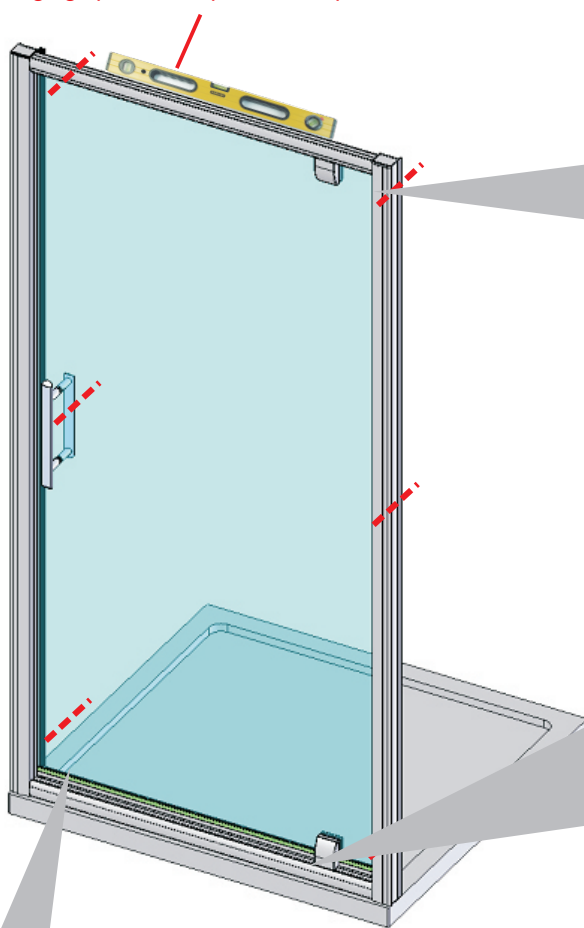
Fit the upright seal to back of the moving panel.
Note: Ensure the seal is fitted as shown and the top end of seal is parallel with top end of moving panel.

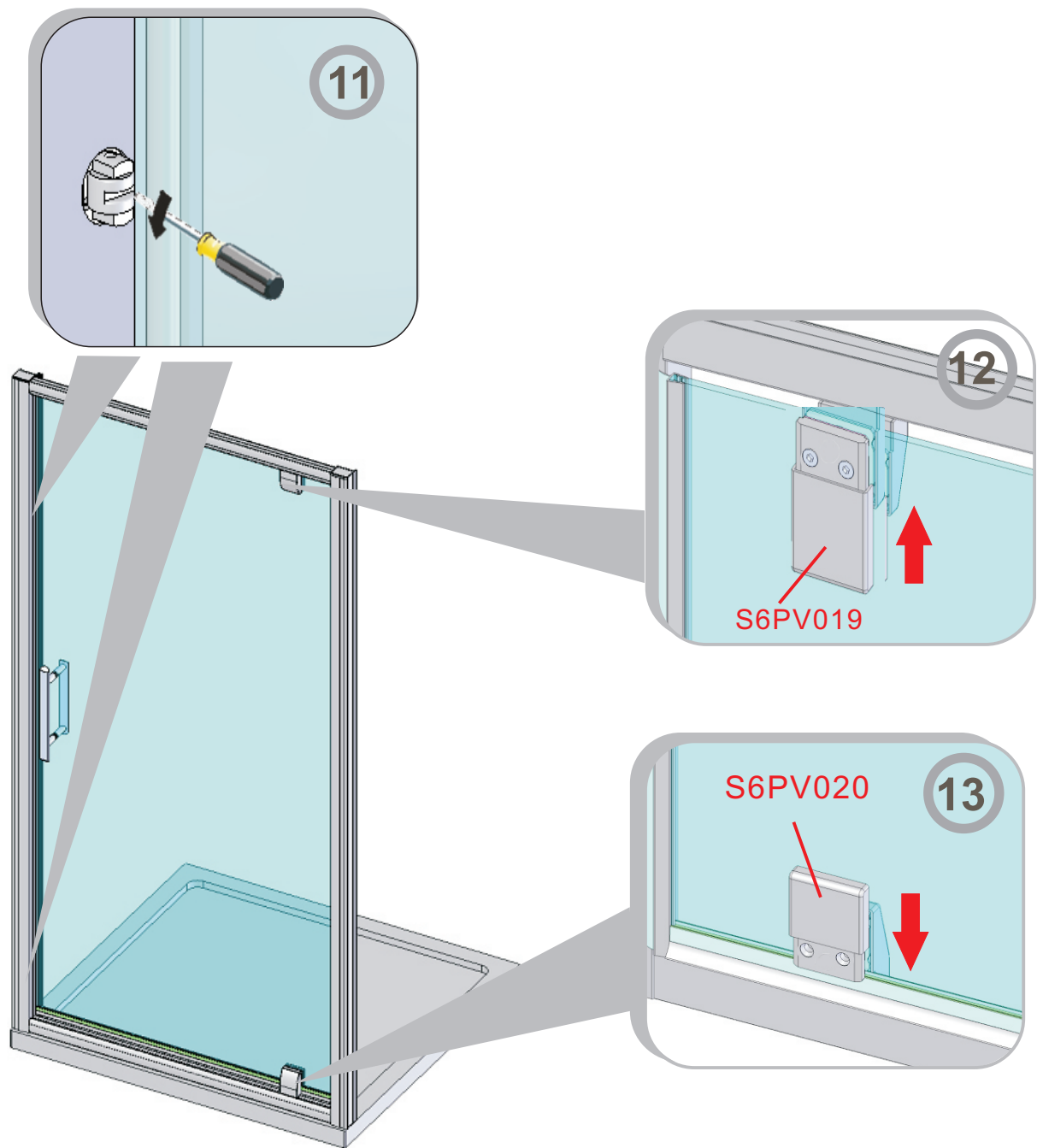
Step 8.

Fit bottom water seal to bottom of moving panel.
Note: Ensure the seal is fitted as shown with deflector fin to inside.

Step 9

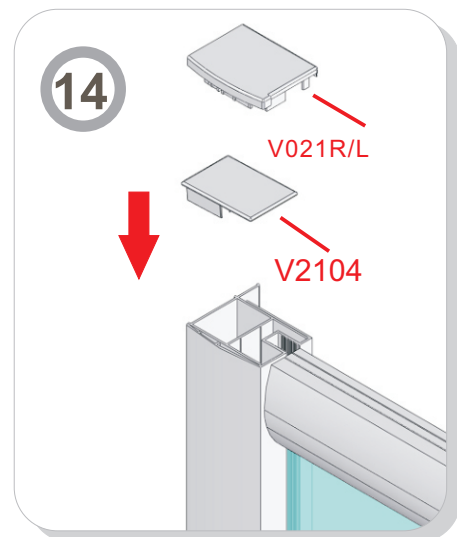
Cut the soft fin of bottom water seal at the end closing with upright seal.
Note: Ensure the fin is facing to the inside.



**Step 11.**

The ball catch can be adjusted in and out to ensure the door closes smoothly.

Note: Do not adjust the ball catch out too much !



Step 15.

Use a quality silicone sealant and applicator gun to seal the finished door.

SEALING INSIDE

Seal top to bottom on the **INSIDE** between the wall profile and the wall.

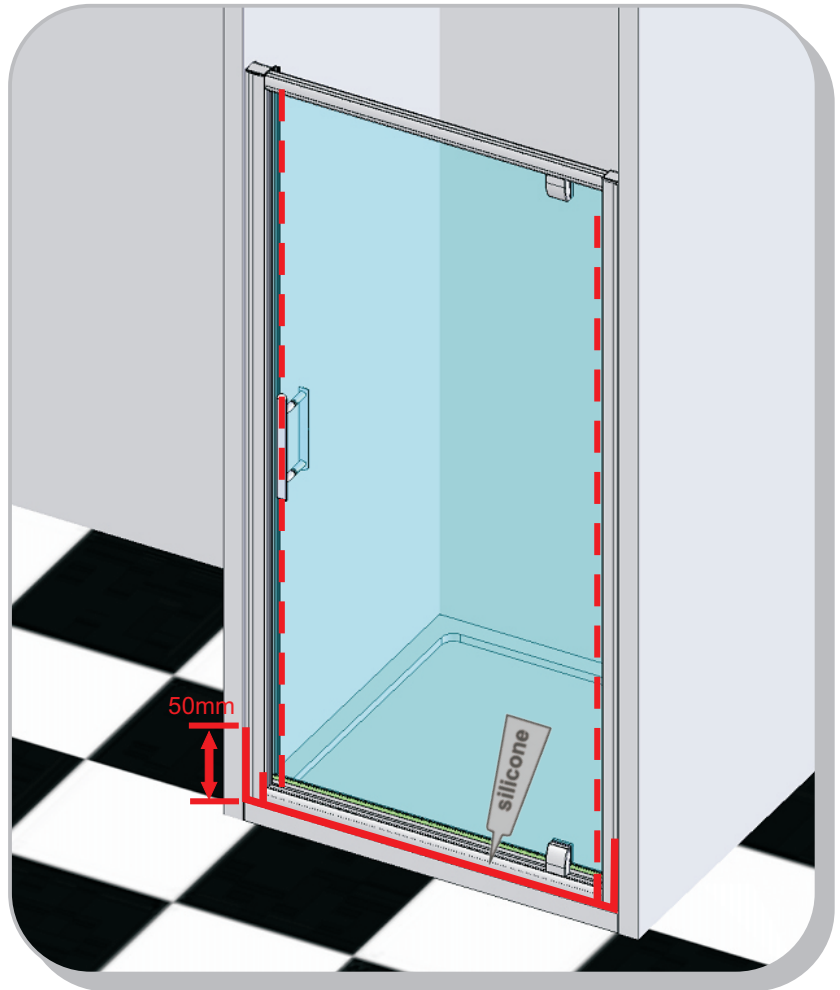
Note: Do not apply sealant on the inside of the tray.

SEALING OUTSIDE

Seal only along bottom on the **OUTSIDE** between glass/rail/profile and the tray and approx 50mm up between the wall profile and the wall. Seal joint between bottom profile and upright profile.



DO NOT use the enclosure for 24 hrs after sealing.



TROUBLE SHOOTING GUIDE

DOOR NOT ALIGNING

1. Is the tray 100% level? ([see page 3](#))
2. Have the walls been checked at different levels to ensure consistency?
3. Are the fixed panel wall profiles stepped in 20mm from the edge of the tray? ([see step 2](#))
4. Do the finished tile measurements on the tray comply with the adjustment listed on the label and in the specifications book?
5. Is the door closing correctly, adjust ball catch. ([see step 11](#))

DOOR LEAKING

1. Is the upright seal fitted correctly? ([See step 7 & 8 & 9](#))
2. Is the door sealed correctly? ([see step 15](#))
3. Is the bottom seal fitted correctly and cut correctly? ([See step 8 & 9](#))

SIDE PANEL



6
Series

IMPORTANT

Thank you for choosing Merlyn. Please familiarise yourself with the fitting instructions before commencing fitting.

1. Check that you have the tools required. ☐
2. Check that the installation site is compatible with size of door supplied ☐
3. Check all the enclosure components. ☐
4. Check that the installation kit is complete ☐

DO NOT attempt to install the product unless you can tick ALL 4 boxes as satisfactory.

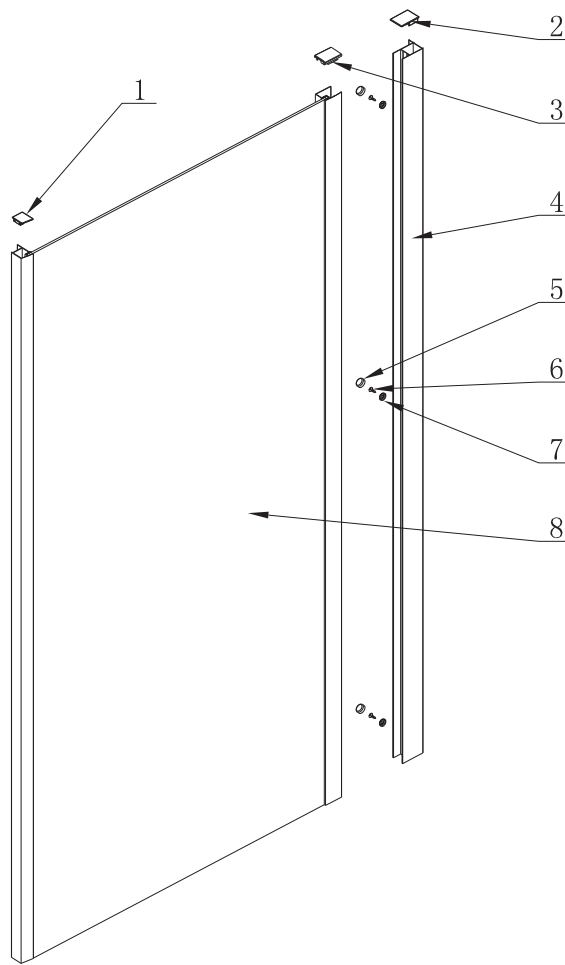
The wall plugs supplied with the installation kit are for use in solid walls. Hollow or 'stud-partition' walls will require alternative fixings. Please consult a hardware supplier for the correct type.

It may also be necessary to consult your tiling supplier about the correct method for drilling your tiles.

USE SAFETY EYEWEAR WHEN DRILLING

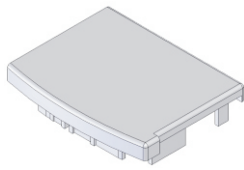
Any parts missing or damaged must be reported to your supplier within 5 days of purchase. Inspect shower enclosure before fitting. No claims will be acceptable after product has been installed.



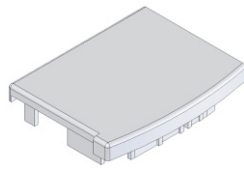


No.	Description	QTY	Part No.	No.	Description	QTY	Part No.
1	corner post cover cap	2	V2108L/R	5	Screw cover cap	3	V2109
2	Wall profile cap	1	V2104	6	Flat head ST4×12	3	V4110
3	side panel upright profile cap	2	V2103L/R	7	Screw cover cap clip	3	V2114
4	Extension profile (only for 760/800 side panel)	1	M6EXT	8	Fixed panel	1	A

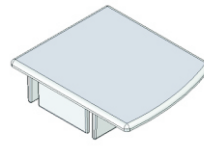
Note: Further part details for fixing kit available on page 2



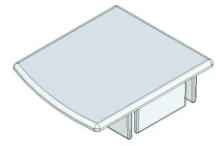
V2103R
×1



V2103L
×1



V2108L
×1



V2108R
×1



V2109
×3



V2114
×3



V4110
×3

Tools Required

- 6mm masonry drill bit
 - Power drill
 - Quality Silicone
 - Pencil
 - Tape Measure
 - #2 Philips Head screw driver
 - Spirit level with horizontal and vertical level indicators
-

IMPORTANT - Installation site

1. Ensure the top surface of the shower tray on which the enclosure will be installed is level in every direction.
2. The tiles or other wall finishing should be effectively sealed at the tray edges.
3. Tiles should extend at least to the corners of the tray and a minimum of 2.0 metres from the top of the tray.

PROCEDURE

TRAY MUST BE 100% LEVEL IN ALL DIRECTIONS

Ensure the shower tray is level in all directions and is properly sealed to the wall. The wall must be tiled down to the top edge of the tray. **Do not angle out bottom tile.**

TRAY MUST BE SEALED FULLY AROUND WHERE THE TRAY MEETS THE WALL.

Note:

For installation of the pivot door, bifold door or Sliding door, please see the door instruction manual. Recommended that the pivot door is hinged from a supporting wall and not the side panel.

Step 1.

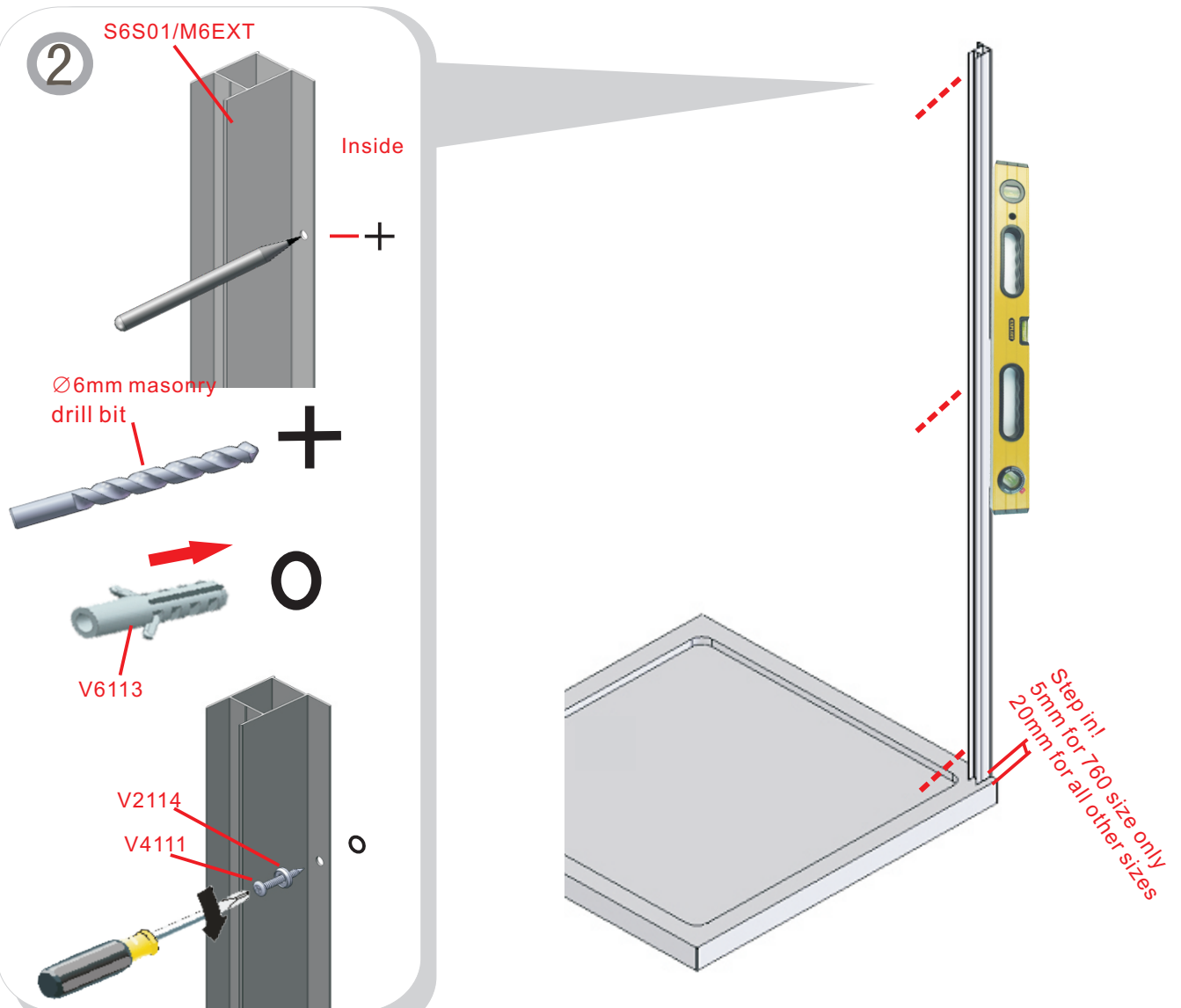
Step in wall profile (5mm for 760 size only / 20mm for all other sizes) from the front edge of the shower tray. Ensure wall profile plumb

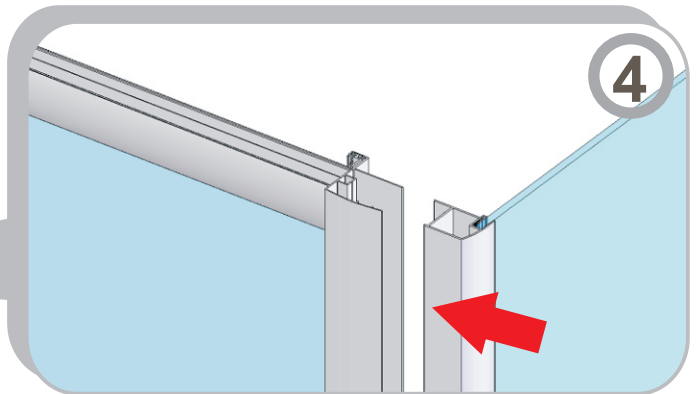
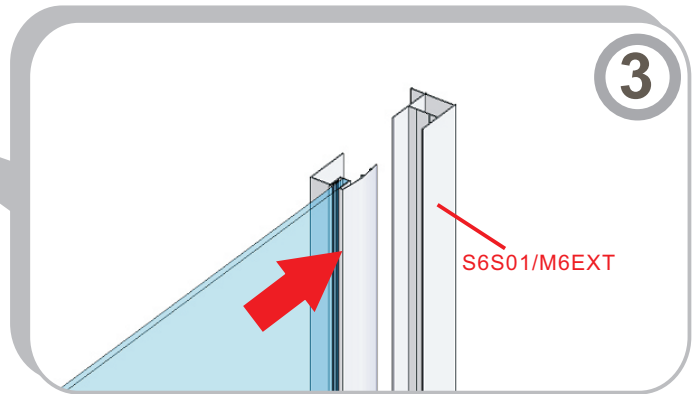
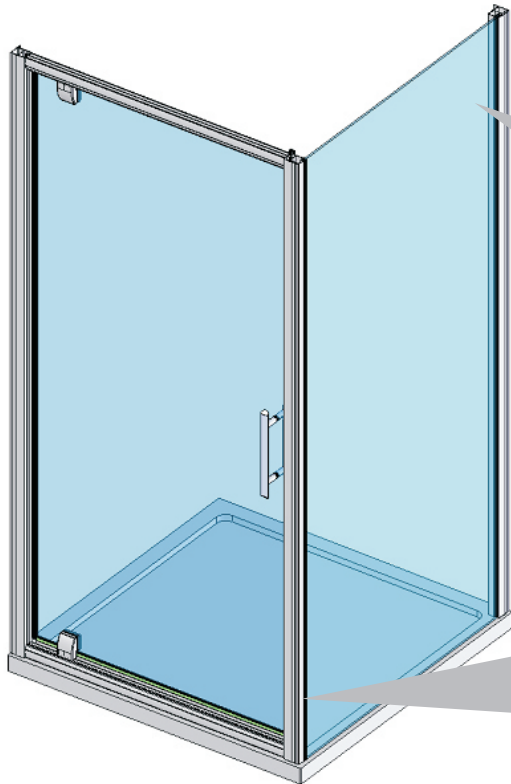
Do not silicone behind wall profile to wall, see sealing section.

IMPORTANT: Use the extension profile M6EXT with an 800 tray only (supplied with 760/800 side panel). For other sizes use the standard wall profile supplied in the door box.

Step 2.

Mark the position for fixing the wall profile to wall.



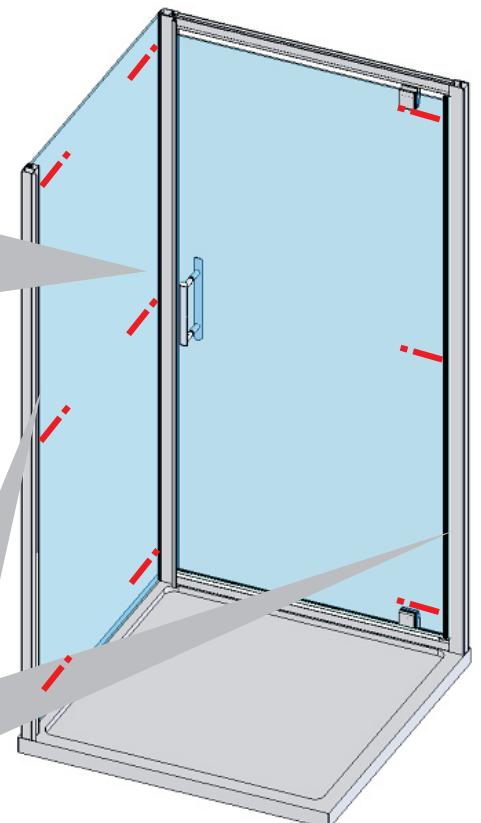
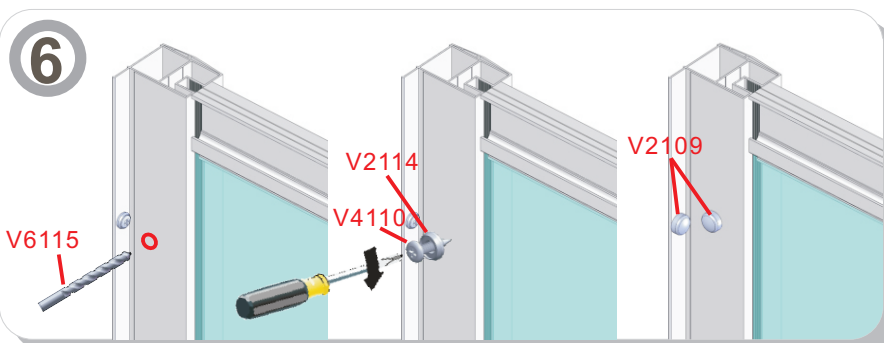
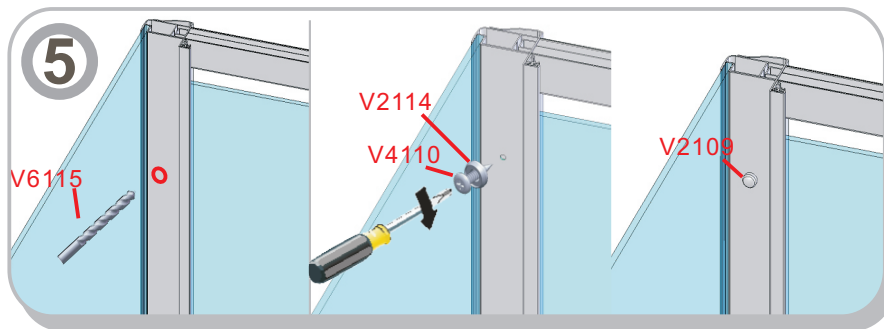


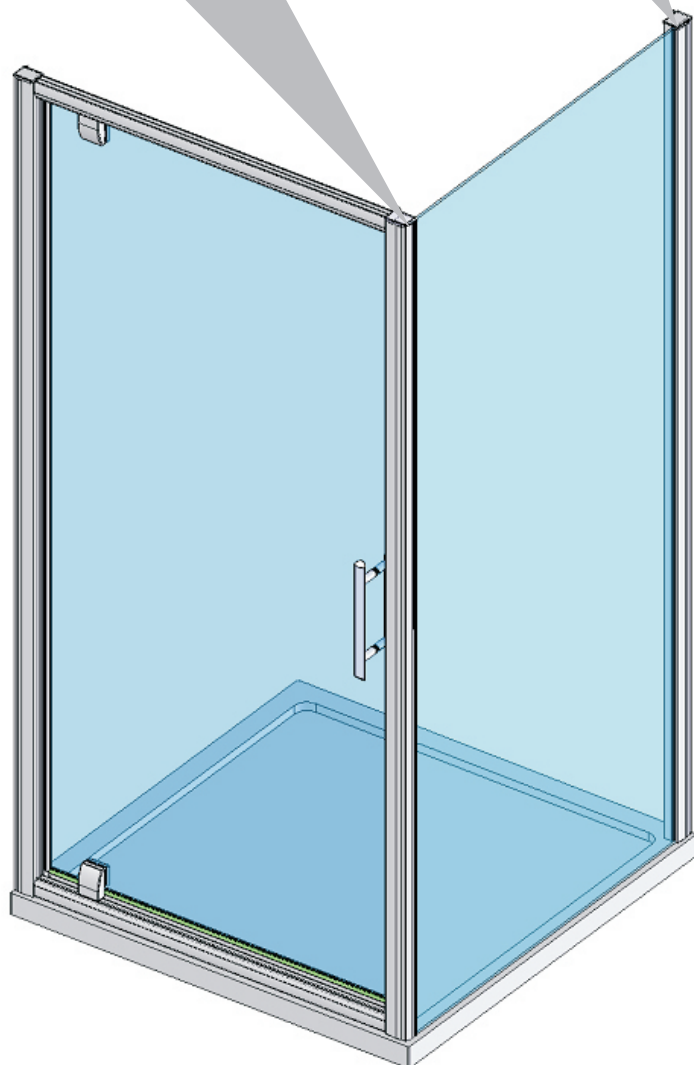
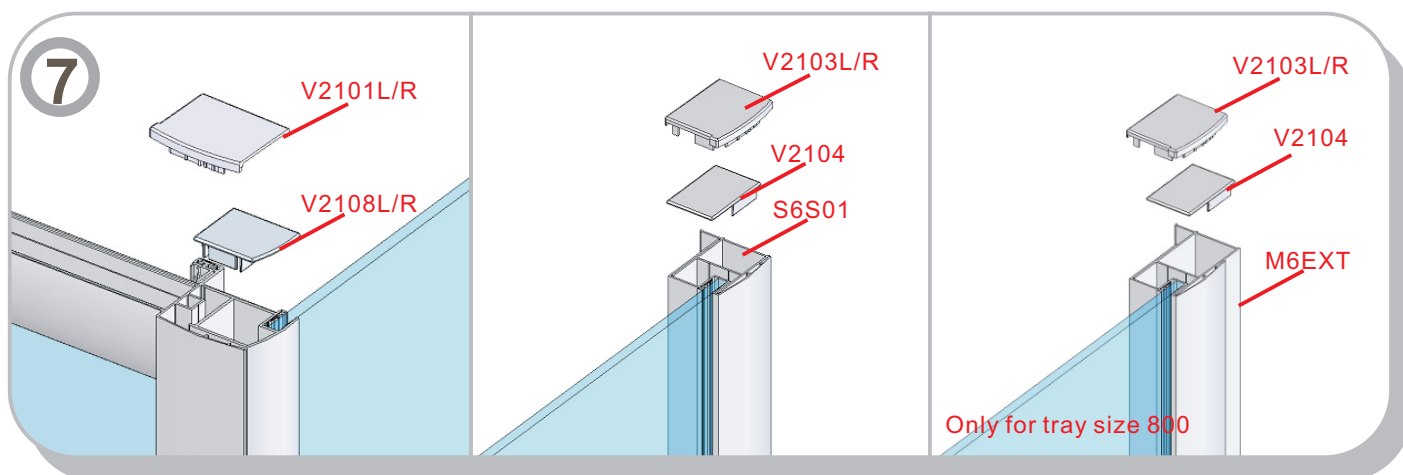
Step 3

Fit the side panel to other wall profile.

Step 4

Fit the side panel to the assembled frame.





Step 7
Fit top profile cover cap.

Step 8.

Use a quality silicone sealant and applicator gun to seal the finished door.

SEALING INSIDE

Seal top to bottom on the **INSIDE** between the wall profile and the wall.

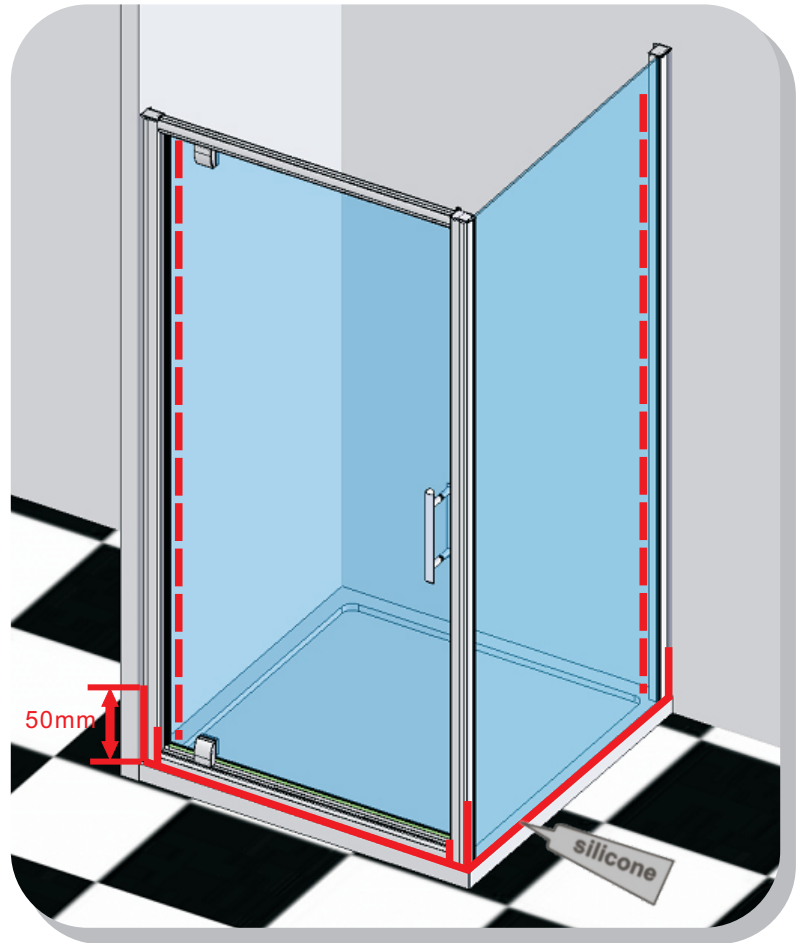
Note: Do not apply sealant on the inside of the tray.

SEALING OUTSIDE

Seal only along bottom on the **OUTSIDE** between glass/rail/profile and the tray and approx 50mm up between the wall profile and the wall. Seal joint between bottom profile and upright profile.



DO NOT use the enclosure for 24 hrs



TROUBLE SHOOTING GUIDE

DOOR NOT ALIGNING

1. Is the tray 100% level? (see page 3)
2. Have the walls been checked at different levels to ensure consistency?
3. Are the fixed panel wall profiles stepped in correctly? (see step 1, page 3)
4. Do the finished tile measurements on the tray comply with the adjustment listed on the label and in the specifications book?
5. Is the door sealed correctly? (see step 8)