

# PRODUCT DATA SHEET

Burlington®

PRODUCT CODE  
GU6500DAG\_FS

RANGE  
Guild

DESCRIPTION  
Guild Floor Standing Vanity 650mm  
Ashbee Grey c/w handles



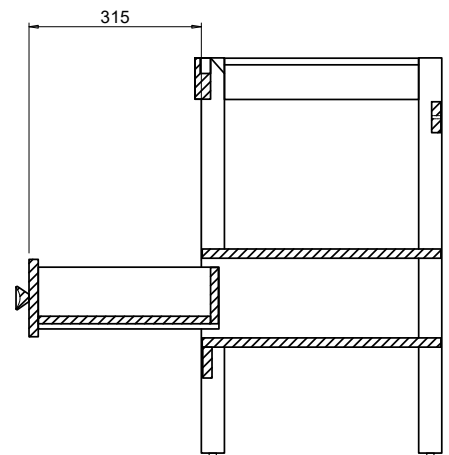
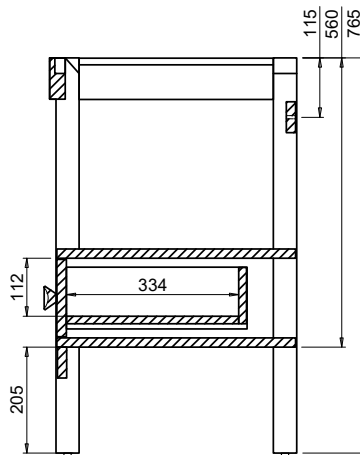
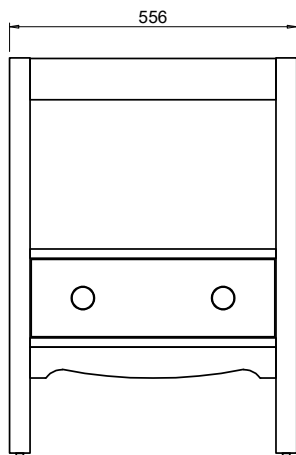
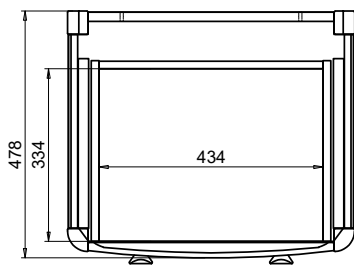
CATEGORY	Furniture
WARRANTY DETAILS	10 Years
COLOUR	Ashbee Grey
FINISH APPLICATION	Lacquered
PRIMARY MATERIAL	MDF
INSTALL TYPE	Floor Standing
PRODUCT WIDTH MM	556
PRODUCT HEIGHT MM	770
PRODUCT DEPTH MM	478
PRODUCT NET WEIGHT KG	24.5
STANDARDS	EN14749:2016

COLOUR CODE / REFERENCE	NCS S8000-N
DRAWER BOX	MDF
DRAWER RUNNERS	DTC / SS10C350H1
DRAWER EXTENSION	Full extension
DRAWER ADJUSTMENT	2 way adjustment
WALL HANGERS	No
ADJUSTABLE FEET	Yes
DRAWER CAPACITY	15 kgs
DRAWER OPERATION	Soft close

## TECHNICAL DIMENSIONS

Dimensions in mm unless otherwise specified.

Tolerances (per material type) apply.



## SPARES LIST

Only the parts labelled are available as spares.

SPARES AVAILABLE UPON REQUEST

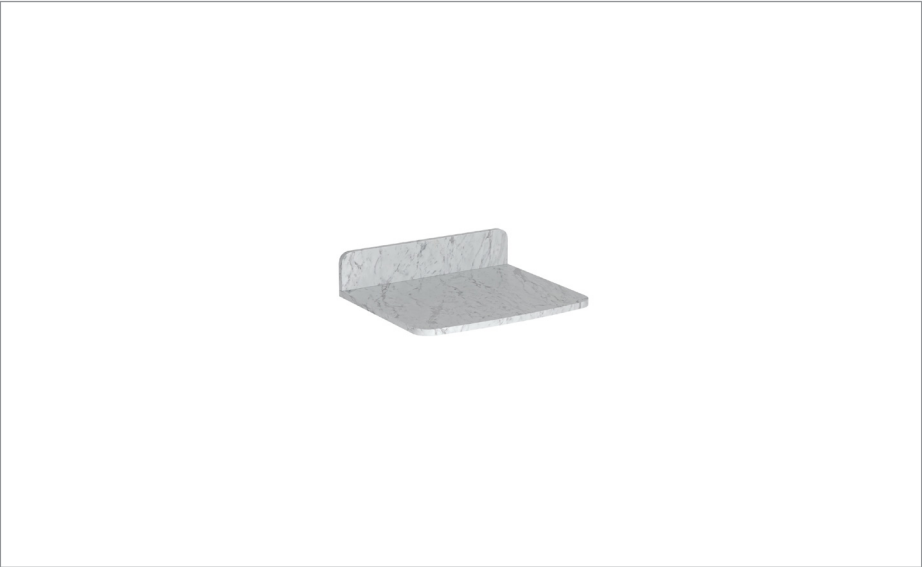
# PRODUCT DATA SHEET



PRODUCT CODE  
GU620TMC

RANGE  
Guild

DESCRIPTION  
Guild Vanity Top 620 with Upstand  
Cararra

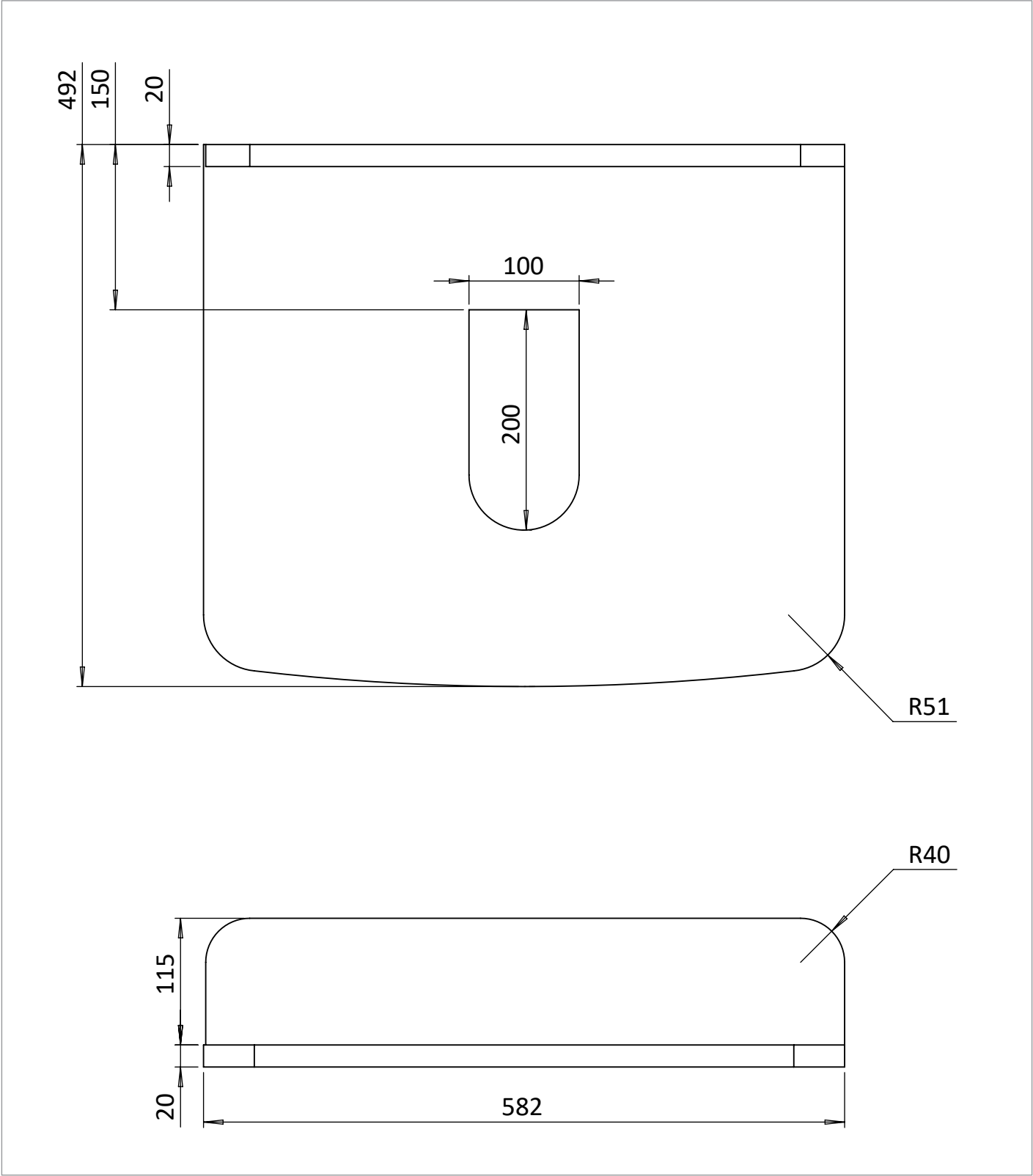


CATEGORY	Furniture
WARRANTY DETAILS	10 Years
COLOUR	Cararra
PRIMARY MATERIAL	Solid Surface
SECONDARY MATERIAL	Solid Surface
INSTALL TYPE	Furniture Mounted
PRODUCT WIDTH MM	582
PRODUCT HEIGHT MM	20
PRODUCT DEPTH MM	492
PRODUCT NET WEIGHT KG	18
STANDARDS	BS EN 14749:2016+A1:2022

DRAWER BOX	No
WALL HANGERS	No
ADJUSTABLE FEET	No

TECHNICAL DIMENSIONS

Dimensions in mm unless otherwise specified.  
Tolerances (per material type) apply.



## SPARES LIST

Only the parts labelled are available as spares.

SPARES AVAILABLE UPON REQUEST