

PRODUCT DATA SHEET

Burlington®

PRODUCT CODE
GU6118CW

RANGE
Guild

DESCRIPTION
Guild Low/High Level Pan White



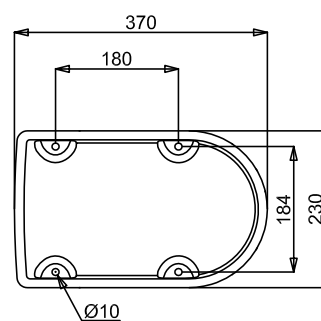
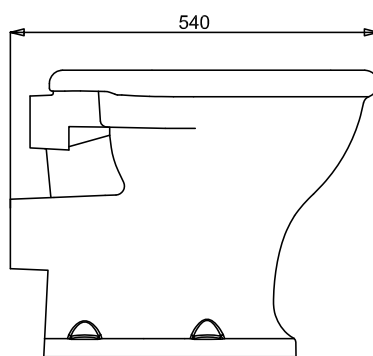
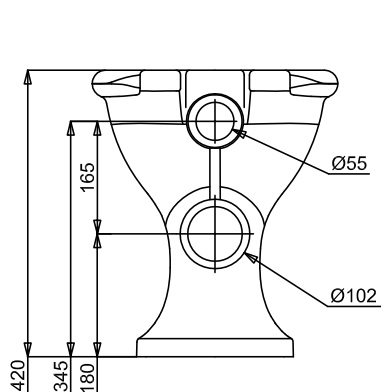
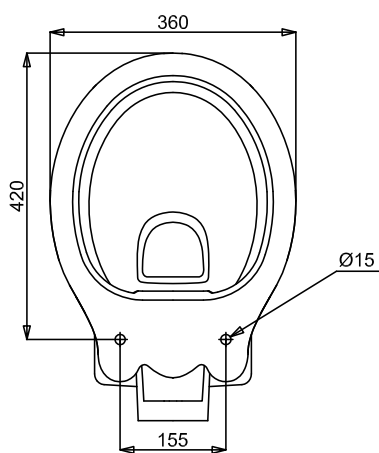
CATEGORY	Sanitaryware
WARRANTY DETAILS	Lifetime
COLOUR	Gloss White
FINISH APPLICATION	Glazed
PRIMARY MATERIAL	Vitreous China
INSTALL TYPE	Horizontal Outlet
PRODUCT WIDTH MM	360
PRODUCT HEIGHT MM	420
PRODUCT DEPTH MM	540
PRODUCT NET WEIGHT KG	19.3
STANDARDS	EN 997:2018 EN 33:2019

FIXINGS INCLUDED	Yes
RIM TYPE	Rimless
FLUSH VOLUME	6/4L
FIXING TYPE	Floor fixing
TRAP TYPE	Horizontal

TECHNICAL DIMENSIONS

Dimensions in mm unless otherwise specified.

Tolerances (per material type) apply.



SPARES LIST

Only the parts labelled are available as spares.

NO SPARES AVAILABLE

PRODUCT DATA SHEET

Burlington®

PRODUCT CODE
GU7002CW

RANGE
Guild

DESCRIPTION
Guild High Level Slimline 51cm Cistern



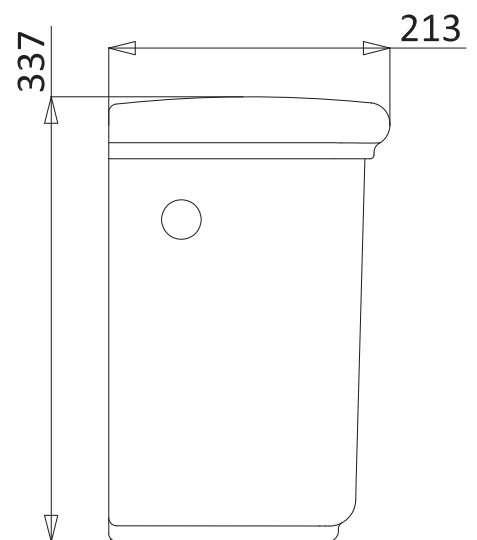
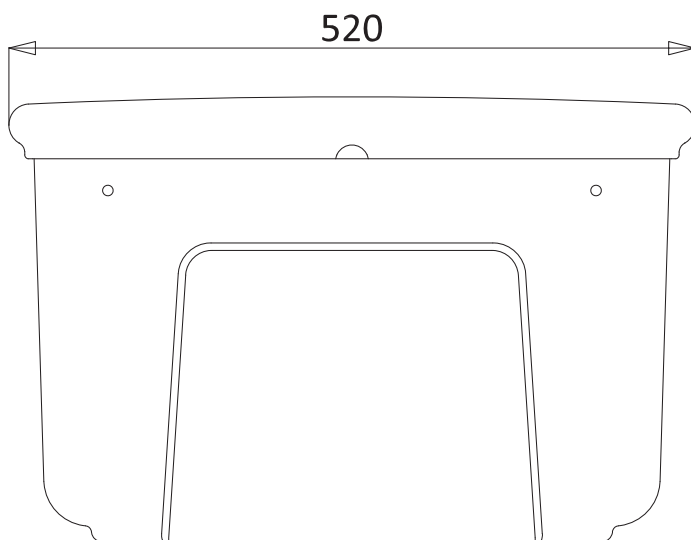
CATEGORY	Sanitaryware
WARRANTY DETAILS	Lifetime
COLOUR	Gloss White
FINISH APPLICATION	Glazed
PRIMARY MATERIAL	Vitreous China
PRODUCT WIDTH MM	520
PRODUCT HEIGHT MM	337
PRODUCT DEPTH MM	213
PRODUCT NET WEIGHT KG	17.3
STANDARDS	EN 14055:2018

FIXINGS INCLUDED	No
FLUSH VOLUME	6/4L
FIXING TYPE	Wall Mounted
CISTERN FLUSH MECHANISM	Dual Flush with Lever

TECHNICAL DIMENSIONS

Dimensions in mm unless otherwise specified.

Tolerances (per material type) apply.



SPARES LIST

Only the parts labelled are available as spares.

NO SPARES AVAILABLE