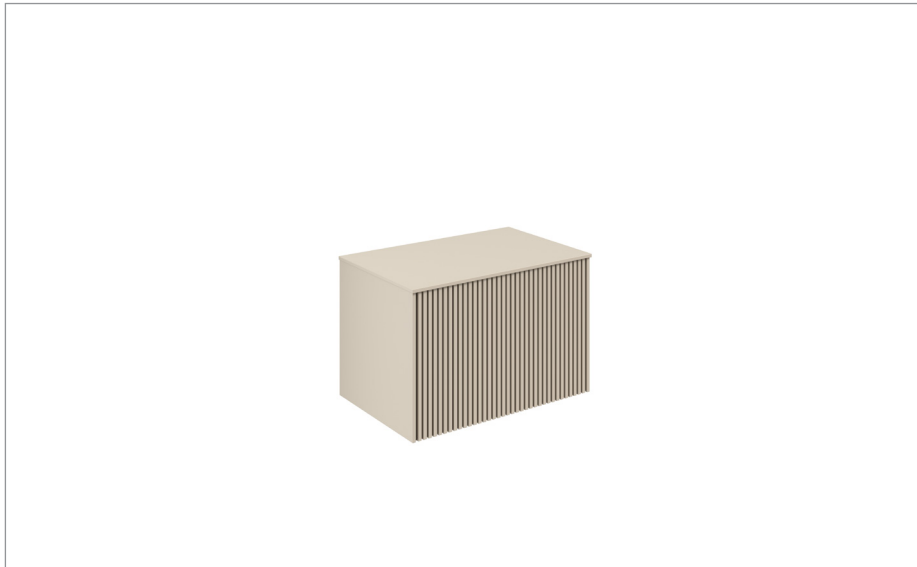


# PRODUCT DATA SHEET



## PRODUCT CODE

LM7000DWSAN+

## RANGE

Limit

## DESCRIPTION

Limit Single Drawer Unit 700 Warm Stone

WEBSITE LINK [Click Here](#)

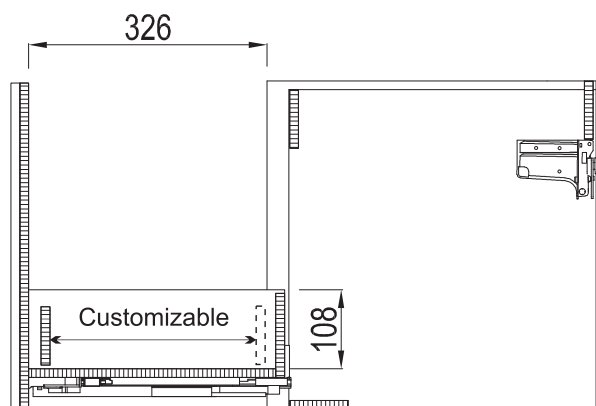
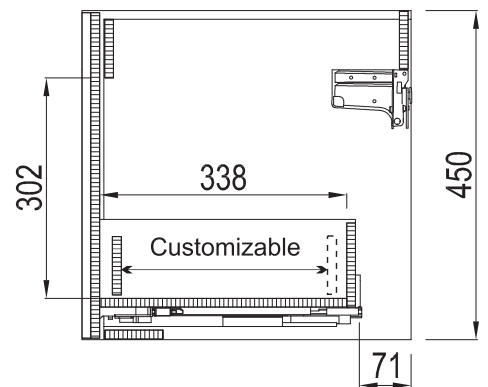
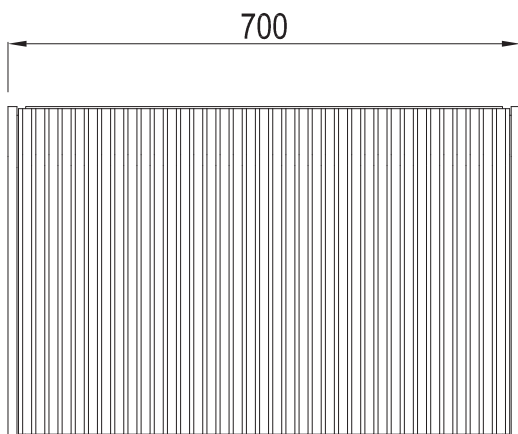
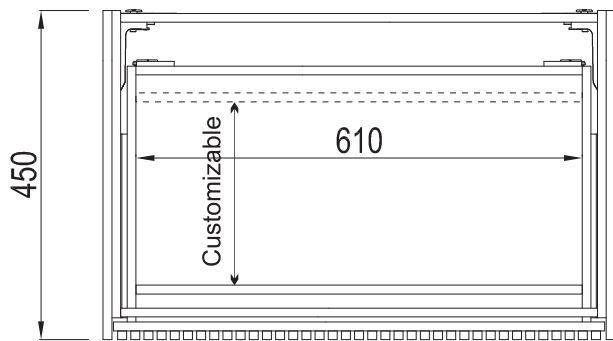
CATEGORY	Furniture
WARRANTY DETAILS	10 Years
COLOUR	Warm Stone
PRIMARY MATERIAL	MFC
INSTALL TYPE	Wall Mounted
PRODUCT WIDTH MM	700
PRODUCT HEIGHT MM	450
PRODUCT DEPTH MM	450
PRODUCT NET WEIGHT KG	16

DRAWER BOX	MFC
DRAWER RUNNERS	HETTICH QUADRO 4D V6/300
DRAWER EXTENSION	Full extension
DRAWER ADJUSTMENT	4
WALL HANGERS	Yes
ADJUSTABLE FEET	No
DRAWER CAPACITY	30kg
DRAWER OPERATION	Soft close/push to open

## TECHNICAL DIMENSIONS

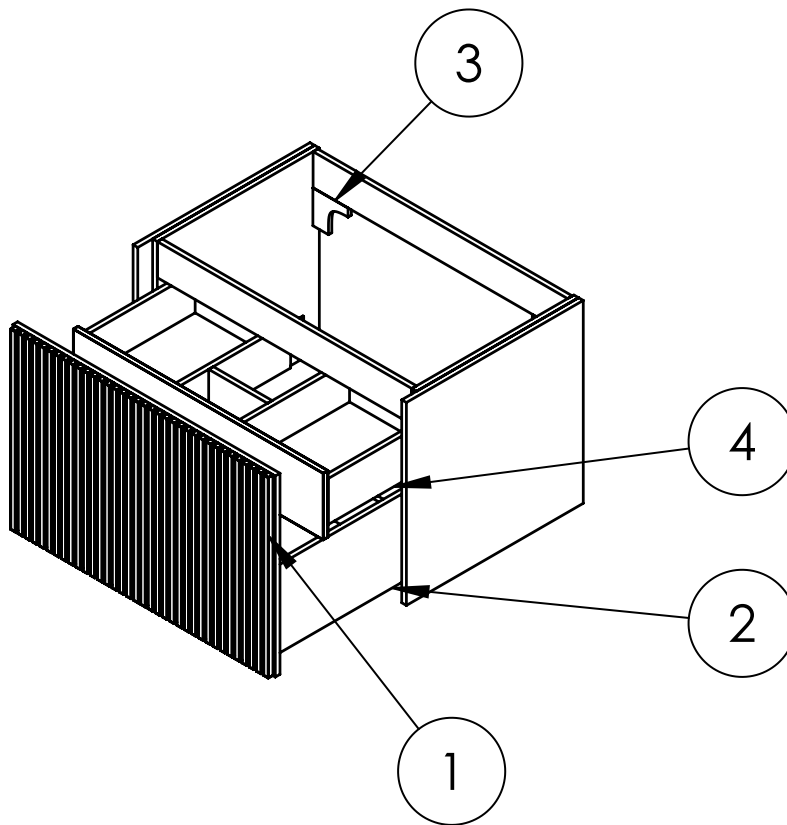
Dimensions in mm unless otherwise specified.

Tolerances (per material type) apply.



## SPARES LIST

Only the parts labelled are available as spares.



NUMBER	PART CODE	DESCRIPTION
1	DF_LM7000DMOAN+	Limit Drawer Front For LM7000DMOAN+
	DF_LM7000DSTAN+	Limit Drawer Front For LM7000DSTAN+
	DF_LM7000DRWAN+	Limit Drawer Front For LM7000DRWAN+
	DF_LM7000DWSAN+	Limit Drawer Front For LM7000DWSAN+
2	RUNNERSLIMIT_1+	Set of Drawer Runners x2 Limit Main Drawer
3	WBACKETSLIMIT+	Wall Brackets x2 Limit
4	RUNNERSLIMIT_2+	Set of Draw Runners x2 Limit for Internal Drawer (Sold Seperately)

# PRODUCT DATA SHEET



**PRODUCT CODE**  
DE0003SCW+

**RANGE**  
GLIDE II

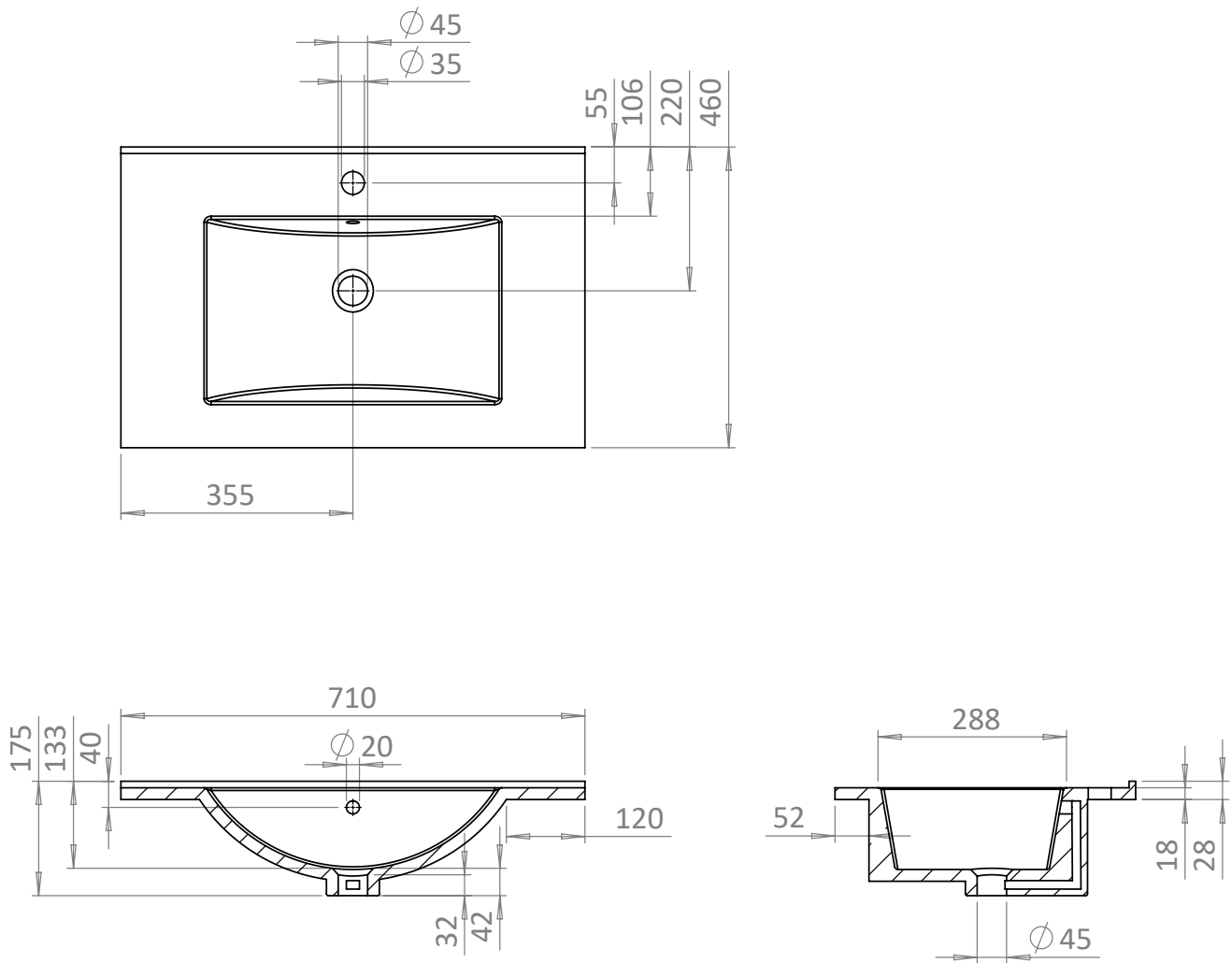
**DESCRIPTION**  
Basin Ceramic 700 White With Overflow

COLOUR	Euro White
MATERIAL	Vitreous China
STANDARDS	EN 31 EN 14688 - CLO
INSTALLATION TYPE	Furniture Mounted
BASIN WASTE SIZE	45mm
TAP HOLES	1
OVERFLOW	Yes
WEIGHT	14kg
WARRANTY	10 Years

## TECHNICAL DIMENSIONS

Dimensions in mm unless otherwise specified.

Tolerances (per material type) apply.



V10522

# PRODUCT DATA SHEET

crosswater<sup>®</sup>



## PRODUCT CODE

GL0710SIW+

## RANGE

GLIDE II

## DESCRIPTION

700mm Basin 0TH Ice White

COLOUR	Ice White
--------	-----------

MATERIAL	Glass
----------	-------

STANDARDS	EN 31 EN 14688 - CLO
-----------	-------------------------

INSTALLATION TYPE	Furniture Mounted
-------------------	-------------------

CAPACITY OF WATER AT OVERFLOW LEVEL	15 L
--	------

BASIN WASTE SIZE	45mm
------------------	------

TAP HOLES	0TH
-----------	-----

OVERFLOW	Yes
----------	-----

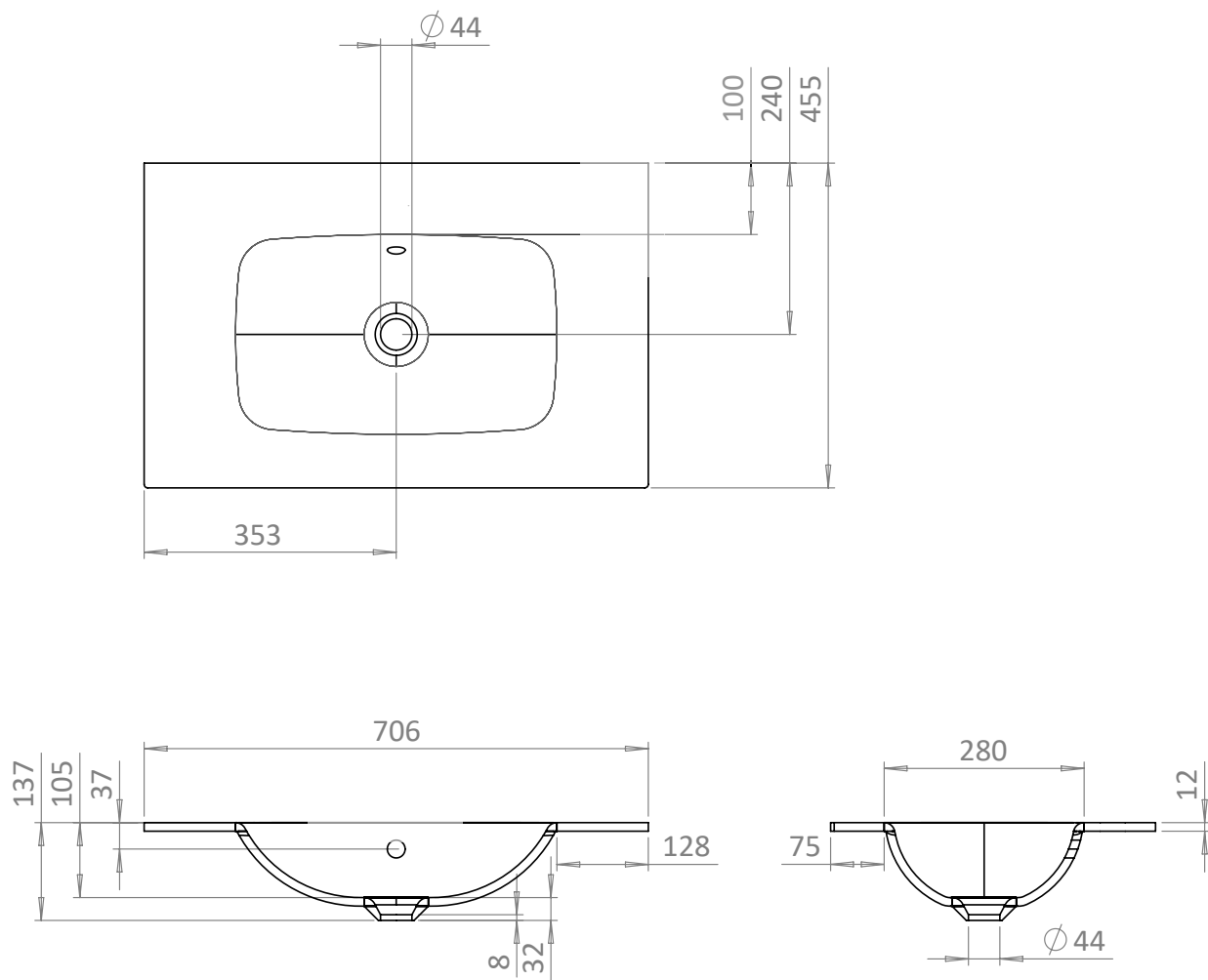
WEIGHT	10kg
--------	------

WARRANTY	10 Years
----------	----------

## TECHNICAL DIMENSIONS

Dimensions in mm unless otherwise specified.

Tolerances (per material type) apply.



V10922

# PRODUCT DATA SHEET



## PRODUCT CODE

GL0711SIW+

## RANGE

GLIDE II

## DESCRIPTION

700mm Basin 1TH Ice White

COLOUR	Ice White
--------	-----------

MATERIAL	Glass
----------	-------

STANDARDS	EN 31 EN 14688 - CLO
-----------	-------------------------

INSTALLATION TYPE	Furniture Mounted
-------------------	-------------------

CAPACITY OF WATER AT OVERFLOW LEVEL	15 L
--	------

BASIN WASTE SIZE	45mm
------------------	------

TAP HOLES	1TH
-----------	-----

OVERFLOW	Yes
----------	-----

WEIGHT	10kg
--------	------

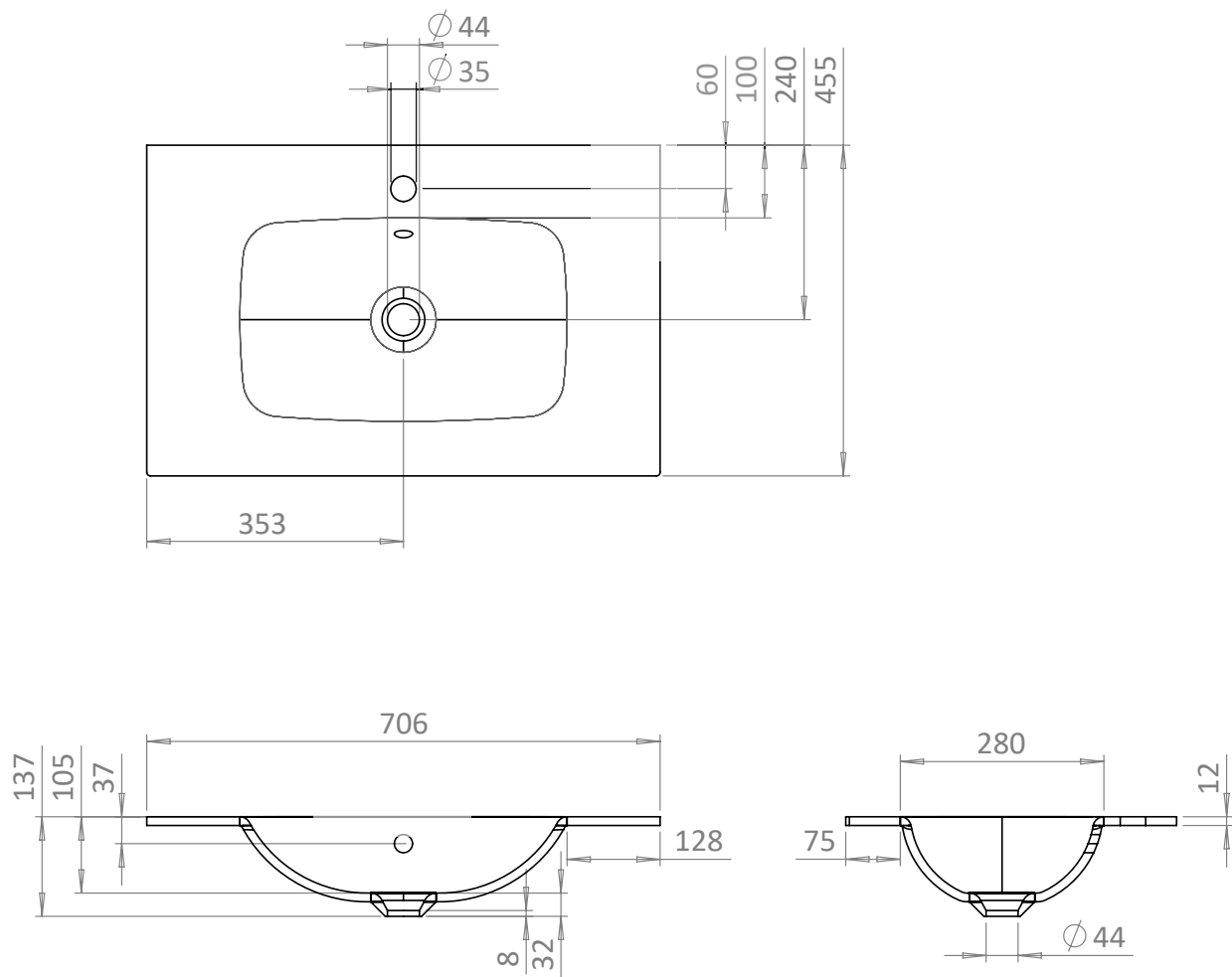
WARRANTY	10 Years
----------	----------



## TECHNICAL DIMENSIONS

Dimensions in mm unless otherwise specified.

Tolerances (per material type) apply.



V10922