

PRODUCT DATA SHEET

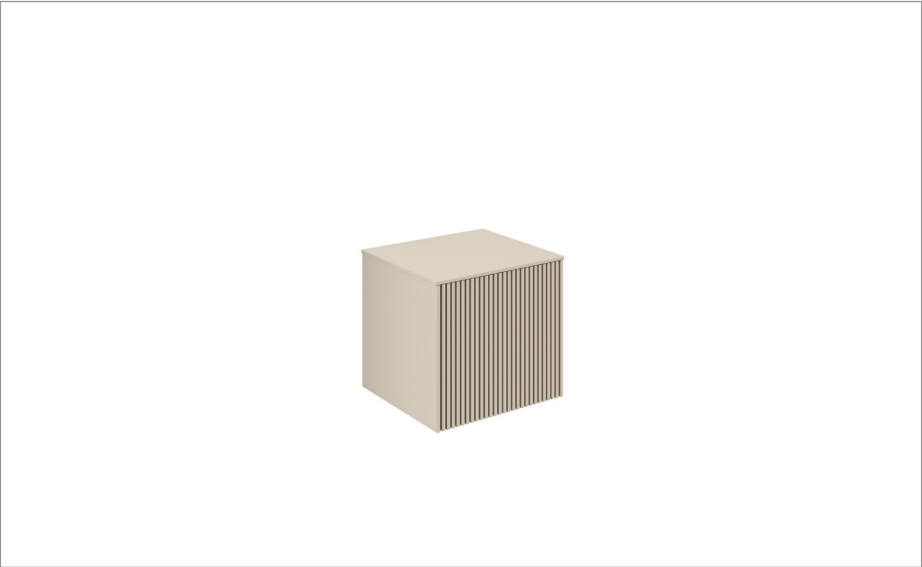


PRODUCT CODE
LM5000DWSAN+

RANGE
Limit

DESCRIPTION
Limit Single Drawer Unit 500 Warm Stone

WEBSITE LINK [Click Here](#)



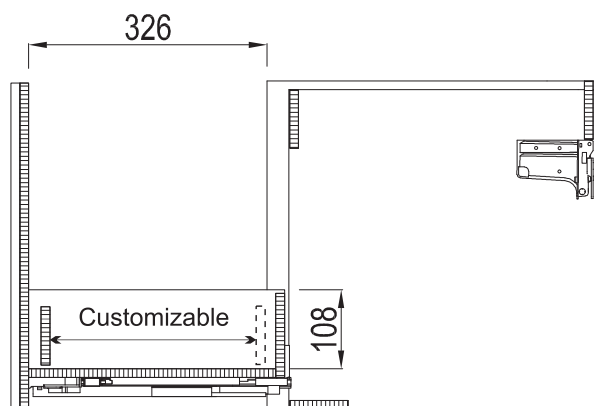
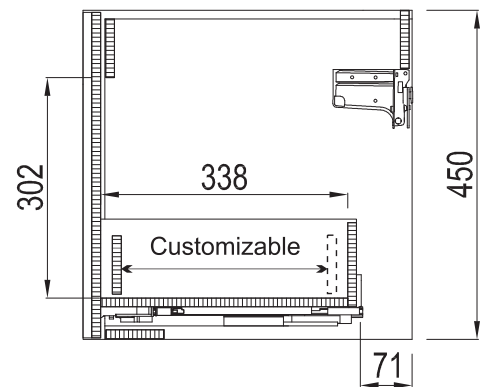
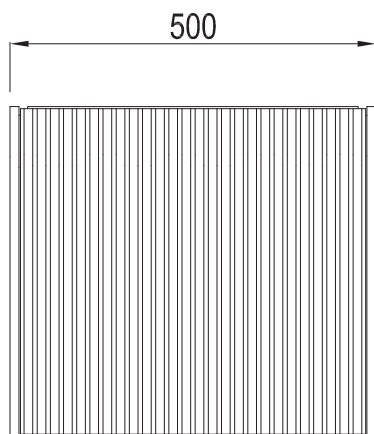
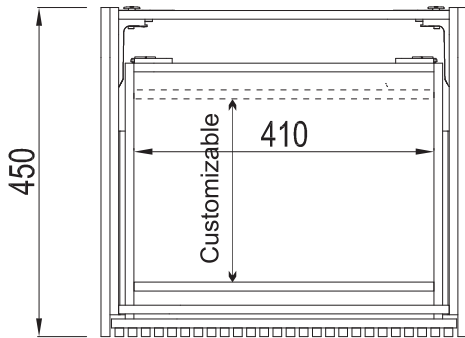
CATEGORY	Furniture
WARRANTY DETAILS	10 Years
COLOUR	Warm Stone
PRIMARY MATERIAL	MFC
INSTALL TYPE	Wall Mounted
PRODUCT WIDTH MM	500
PRODUCT HEIGHT MM	450
PRODUCT DEPTH MM	450
PRODUCT NET WEIGHT KG	11

DRAWER BOX	MFC
DRAWER RUNNERS	HETTICH QUADRO 4D V6/300
DRAWER EXTENSION	Full extension
DRAWER ADJUSTMENT	4
WALL HANGERS	Yes
ADJUSTABLE FEET	No
DRAWER CAPACITY	30kg
DRAWER OPERATION	Soft close/push to open

TECHNICAL DIMENSIONS

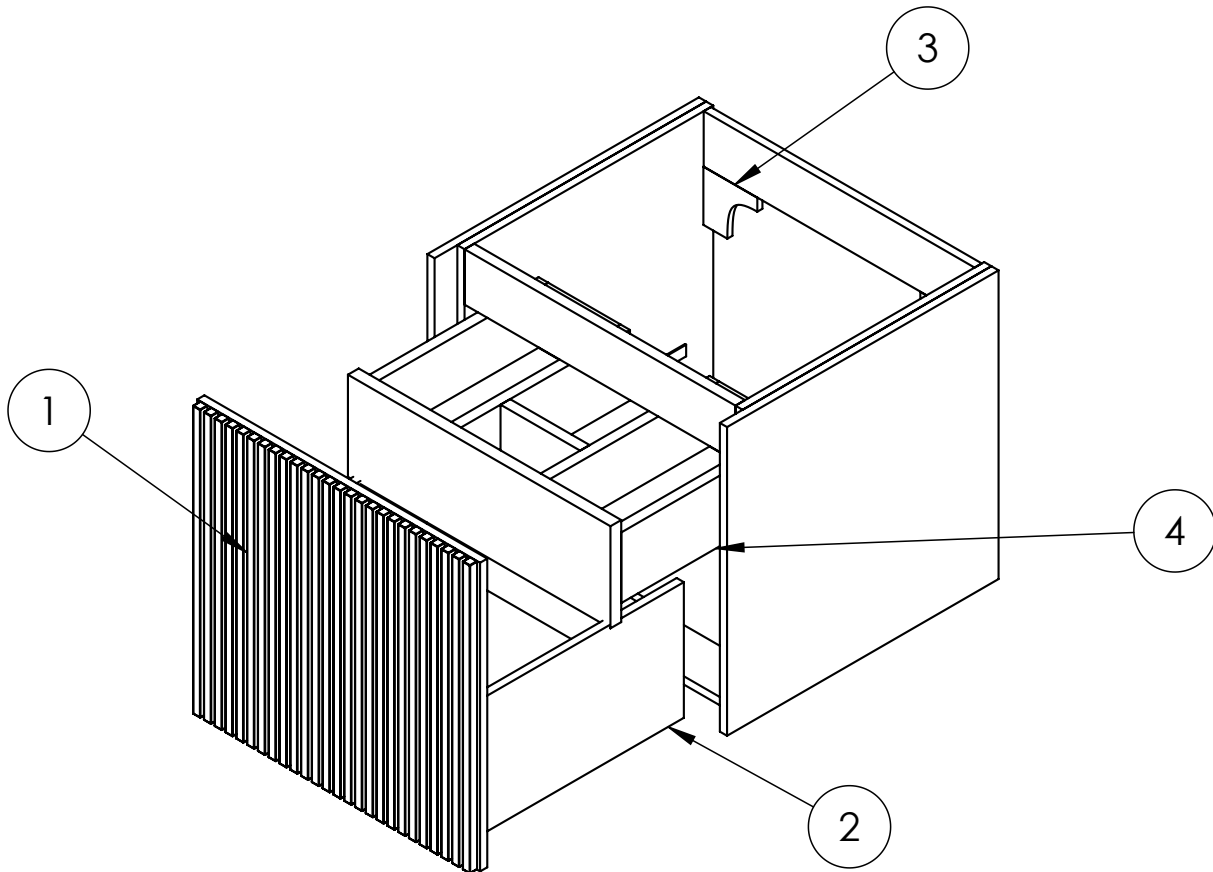
Dimensions in mm unless otherwise specified.

Tolerances (per material type) apply.



SPARES LIST

Only the parts labelled are available as spares.



NUMBER	PART CODE	DESCRIPTION
1	DF_LM5000DMOAN+	Limit Drawer Front For LM5000DMOAN+
	DF_LM5000DSTAN+	Limit Drawer Front For LM5000DSTAN+
	DF_LM5000DRWAN+	Limit Drawer Front For LM5000DRWAN+
	DF_LM5000DWSAN+	Limit Drawer Front For LM5000DWSAN+
2	RUNNERSLIMIT_1+	Set of Drawer Runners x2 Limit Main Drawer
3	WBRACKETSLIMIT+	Wall Brackets x2 Limit
4	RUNNERSLIMIT_2+	Set of Draw Runners x2 Limit for Internal Drawer (Sold Seperately)

PRODUCT DATA SHEET



PRODUCT CODE
DE0002SCW+

RANGE
GLIDE II

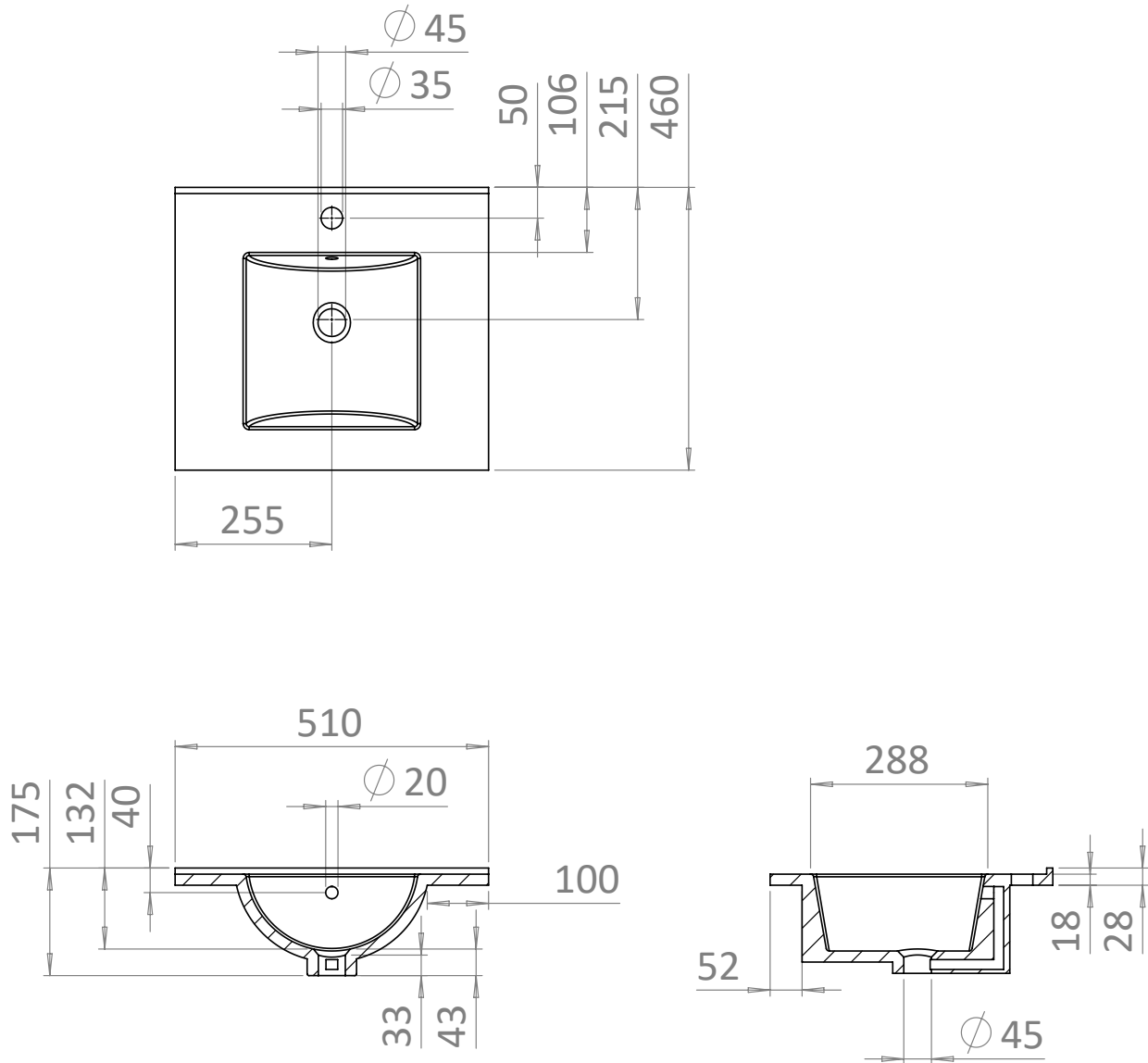
DESCRIPTION
Basin Ceramic 500 White With Overflow

COLOUR	Euro White
MATERIAL	Vitreous China
STANDARDS	EN 31 EN 14688 - CLO
INSTALLATION TYPE	Furniture Mounted
BASIN WASTE SIZE	45mm
TAP HOLES	1
OVERFLOW	Yes
WEIGHT	11kg
WARRANTY	10 Years

TECHNICAL DIMENSIONS

Dimensions in mm unless otherwise specified.

Tolerances (per material type) apply.



V10522

PRODUCT DATA SHEET



PRODUCT CODE
GL0510SIW+

RANGE
GLIDE II

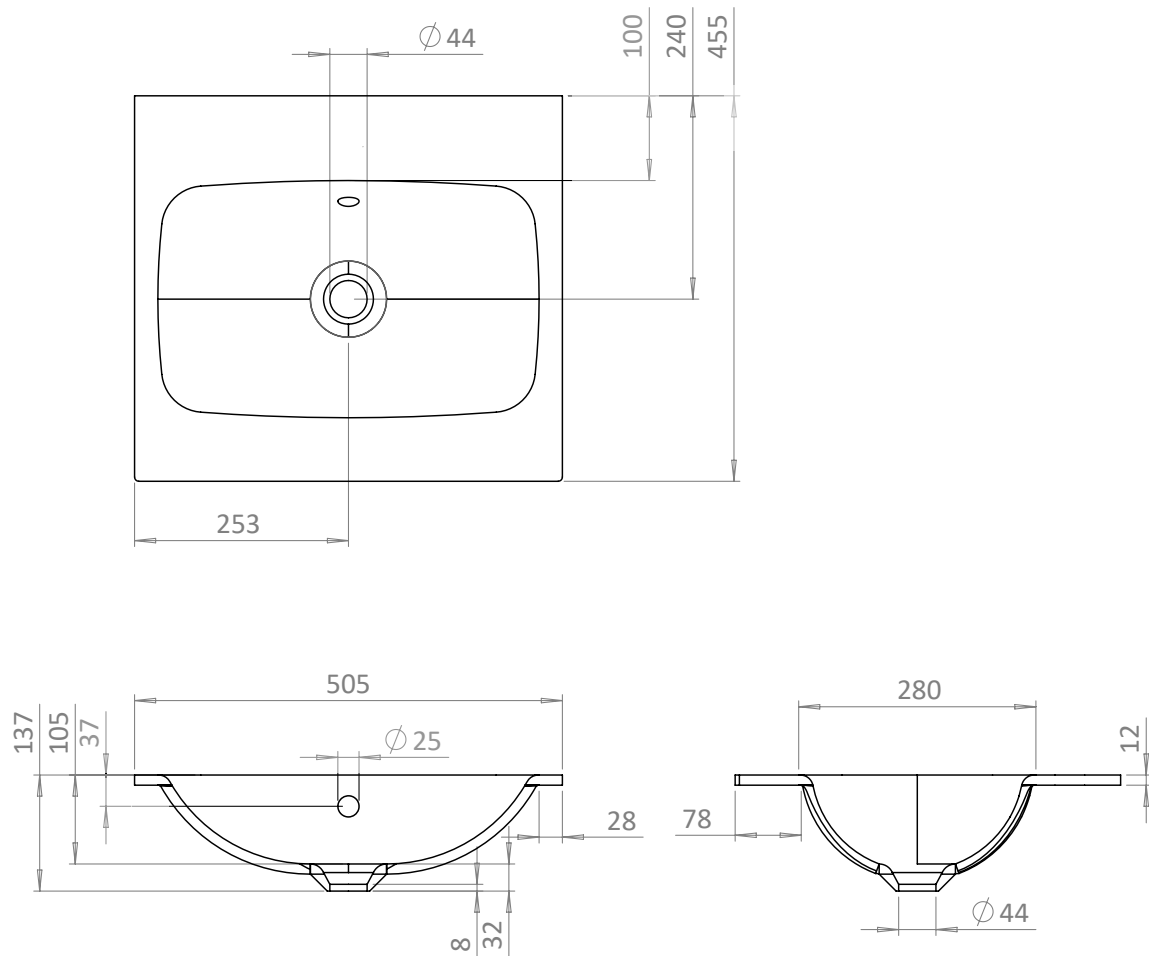
DESCRIPTION
500mm Basin 0TH Ice White

COLOUR	Ice White
MATERIAL	Glass
STANDARDS	EN 31 EN 14688 - CLO
INSTALLATION TYPE	Furniture Mounted
CAPACITY OF WATER AT OVERFLOW LEVEL	15 L
BASIN WASTE SIZE	45mm
TAP HOLES	0TH
OVERFLOW	Yes
WEIGHT	7kg
WARRANTY	10 Years

TECHNICAL DIMENSIONS

Dimensions in mm unless otherwise specified.

Tolerances (per material type) apply.



V10522

PRODUCT DATA SHEET



PRODUCT CODE
GL0511SIW+

RANGE
GLIDE II

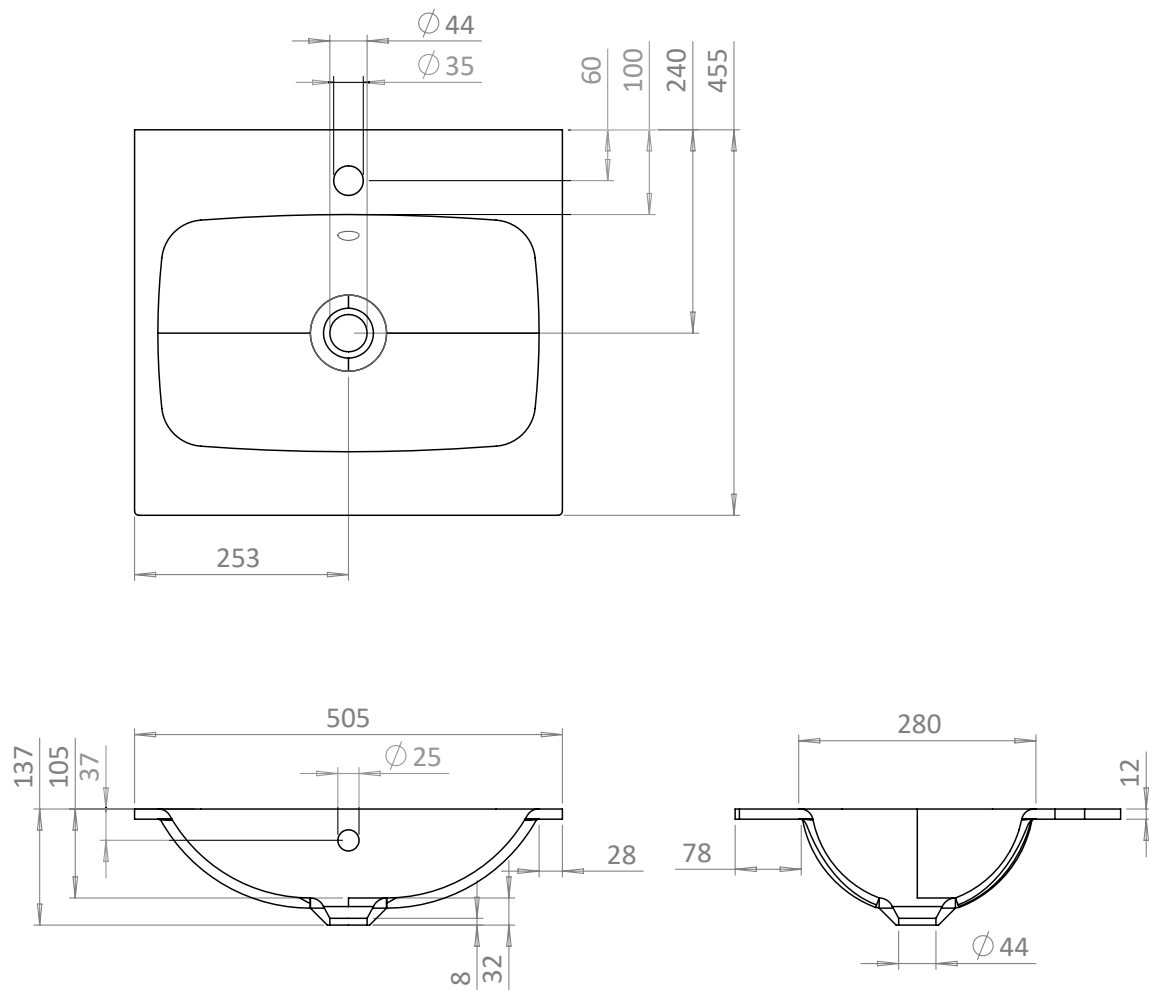
DESCRIPTION
500mm Basin 1TH Ice White

COLOUR	Ice White
MATERIAL	Glass
STANDARDS	EN 31 EN 14688 - CLO
INSTALLATION TYPE	Furniture Mounted
CAPACITY OF WATER AT OVERFLOW LEVEL	15 L
BASIN WASTE SIZE	45mm
TAP HOLES	1TH
OVERFLOW	Yes
WEIGHT	7kg
WARRANTY	10 Years

TECHNICAL DIMENSIONS

Dimensions in mm unless otherwise specified.

Tolerances (per material type) apply.



V10522