

PRODUCT DATA SHEET

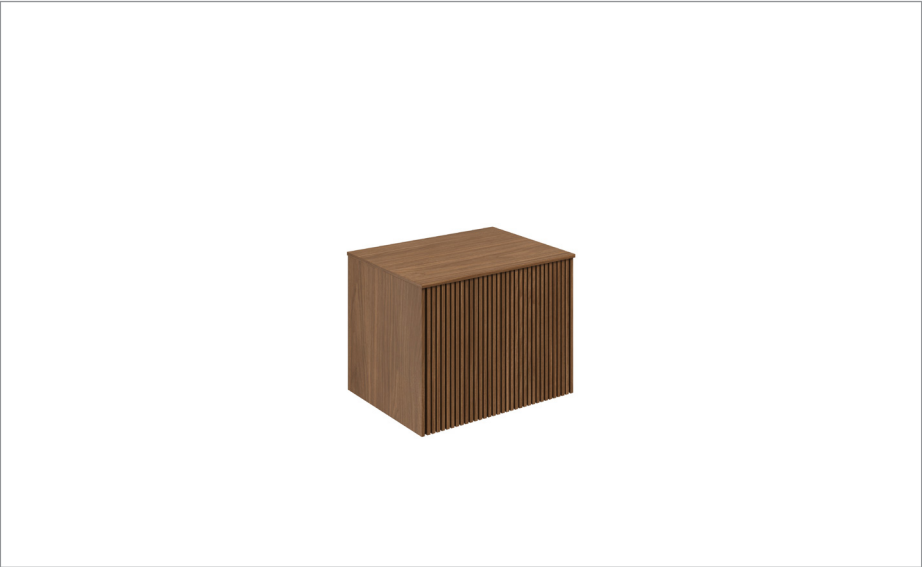


PRODUCT CODE
LM6000DRWAN+

RANGE
Limit

DESCRIPTION
Limit Single Drawer Unit 600 Royal Walnut

WEBSITE LINK [Click Here](#)



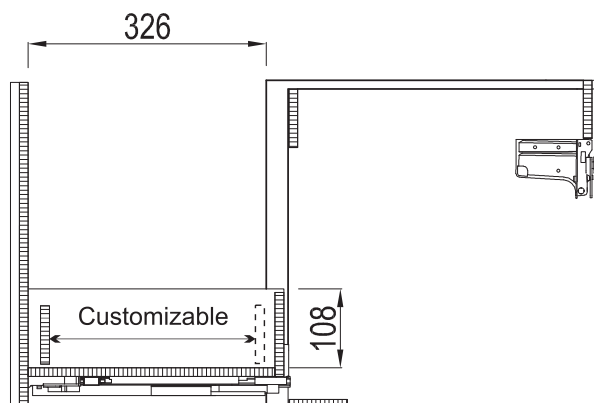
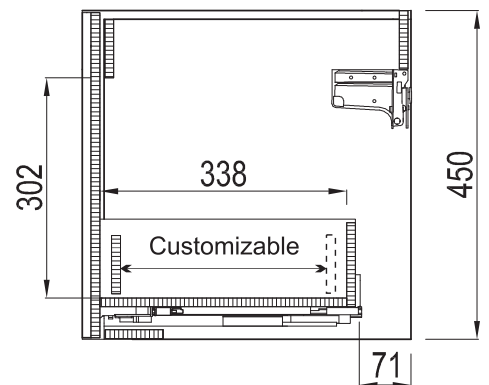
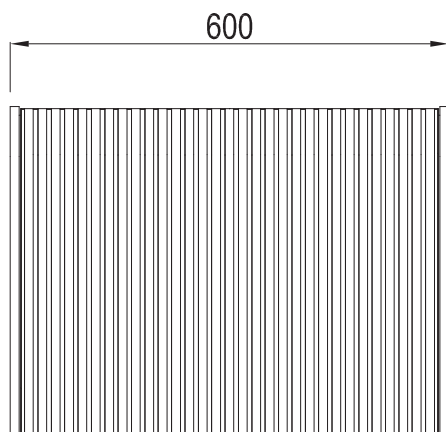
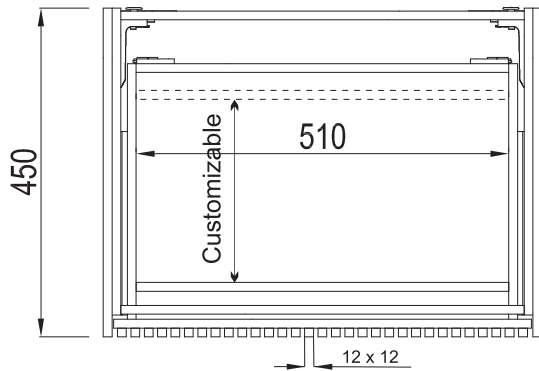
CATEGORY	Furniture
WARRANTY DETAILS	10 Years
COLOUR	Royal Walnut
PRIMARY MATERIAL	MFC
INSTALL TYPE	Wall Mounted
PRODUCT WIDTH MM	600
PRODUCT HEIGHT MM	450
PRODUCT DEPTH MM	450
PRODUCT NET WEIGHT KG	14

DRAWER BOX	MFC
DRAWER RUNNERS	HETTICH QUADRO 4D V6/300
DRAWER EXTENSION	Full extension
DRAWER ADJUSTMENT	4
WALL HANGERS	Yes
ADJUSTABLE FEET	No
DRAWER CAPACITY	30kg
DRAWER OPERATION	Soft close/push to open

TECHNICAL DIMENSIONS

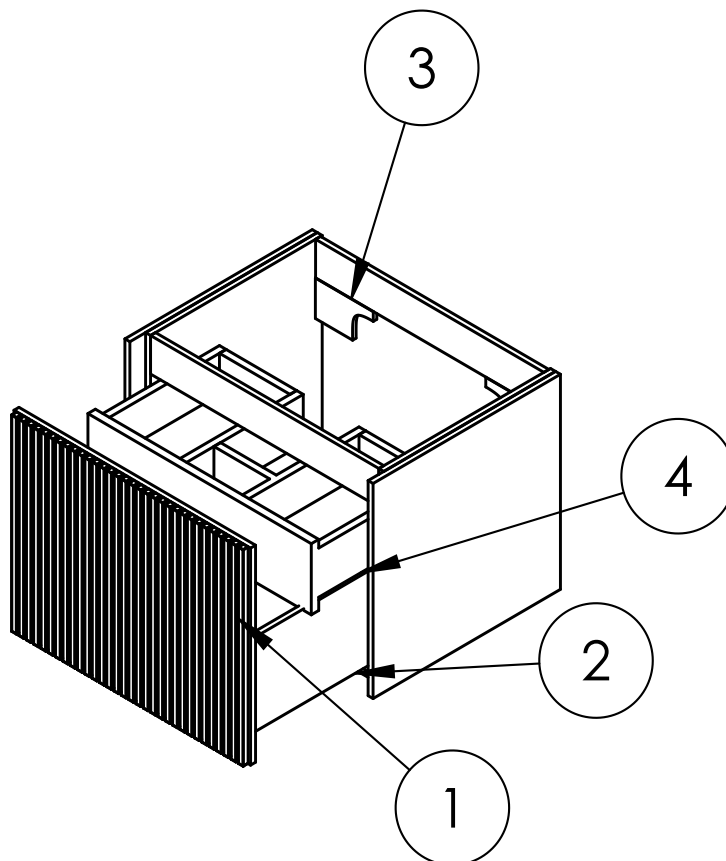
Dimensions in mm unless otherwise specified.

Tolerances (per material type) apply.



SPARES LIST

Only the parts labelled are available as spares.



NUMBER	PART CODE	DESCRIPTION
1	DF_LM6000DMOAN+	Limit Drawer Front For LM6000DMOAN+
	DF_LM6000DSTAN+	Limit Drawer Front For LM6000DSTAN+
	DF_LM6000DRWAN+	Limit Drawer Front For LM6000DRWAN+
	DF_LM6000DWSAN+	Limit Drawer Front For LM6000DWSAN+
2	RUNNERSLIMIT_1+	Set of Drawer Runners x2 Limit Main Drawer
3	WBACKETSLIMIT+	Wall Brackets x2 Limit
4	RUNNERSLIMIT_2+	Set of Draw Runners x2 Limit for Internal Drawer (Sold Seperately)

PRODUCT DATA SHEET



PRODUCT CODE
DE0005SCW+

RANGE
GLIDE II

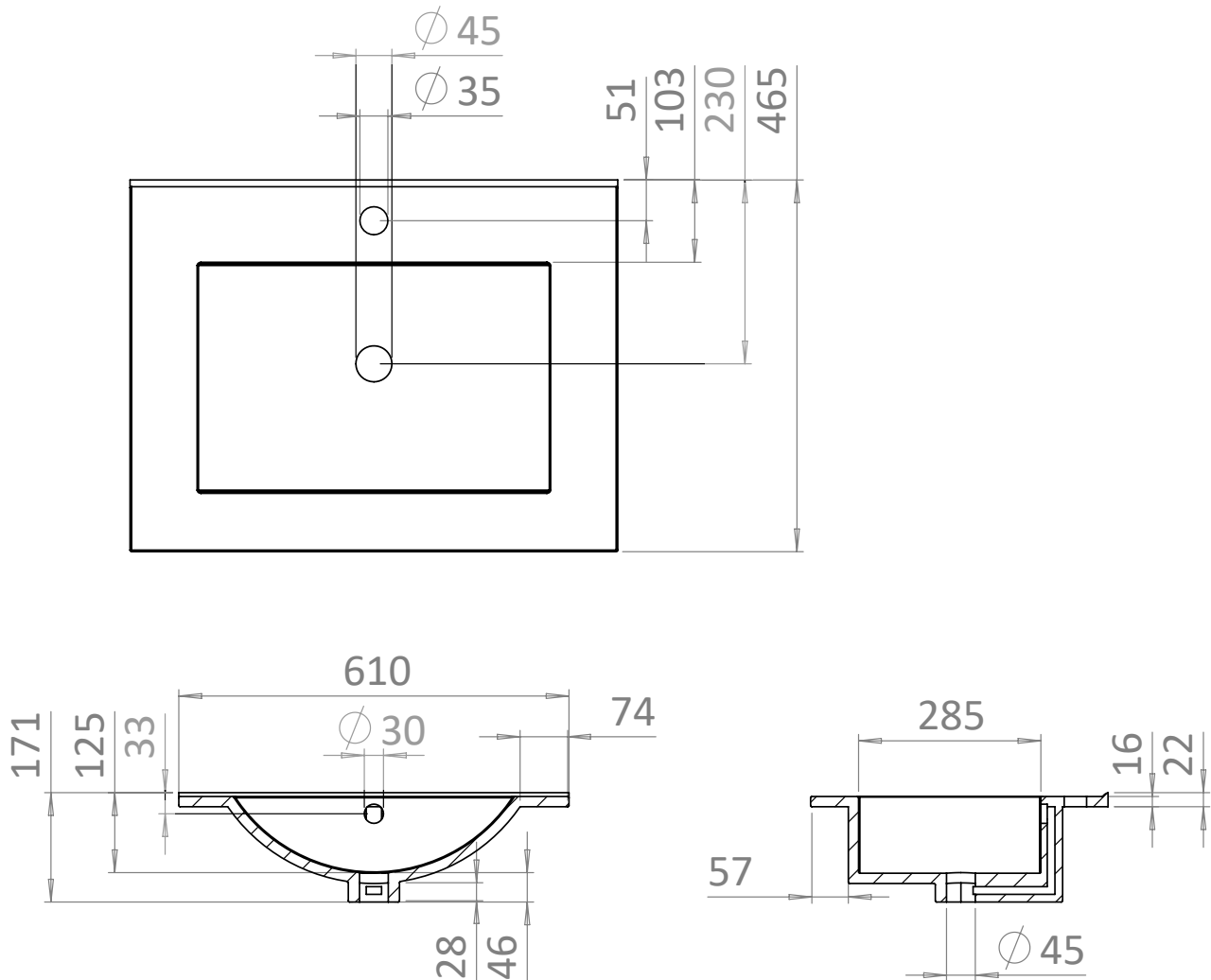
DESCRIPTION
Basin Ceramic 600 White With Overflow

COLOUR	Euro White
MATERIAL	Vitreous China
STANDARDS	EN 31 EN 14688 - CLO
INSTALLATION TYPE	Furniture Mounted
BASIN WASTE SIZE	45mm
TAP HOLES	1
OVERFLOW	Yes
WEIGHT	12.5kg
WARRANTY	10 Years

TECHNICAL DIMENSIONS

Dimensions in mm unless otherwise specified.

Tolerances (per material type) apply.



V10522

PRODUCT DATA SHEET



PRODUCT CODE
GL0610SIW+

RANGE
GLIDE II

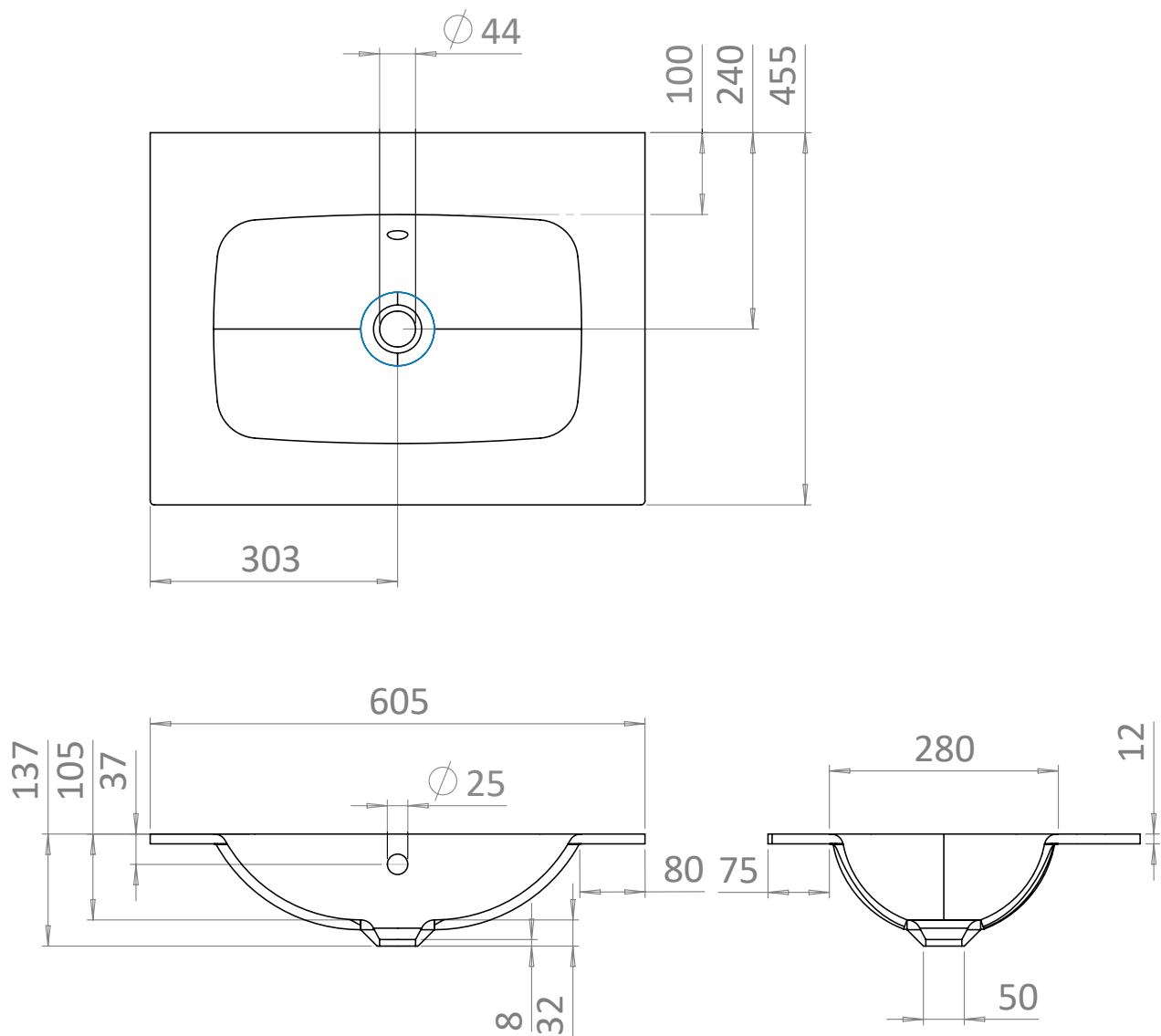
DESCRIPTION
600mm Basin 0TH Ice White

COLOUR	Ice White
MATERIAL	Glass
STANDARDS	EN 31 EN 14688 - CLO
INSTALLATION TYPE	Furniture Mounted
CAPACITY OF WATER AT OVERFLOW LEVEL	15 L
BASIN WASTE SIZE	45mm
TAP HOLES	0TH
OVERFLOW	Yes
WEIGHT	8.3kg
WARRANTY	10 Years

TECHNICAL DIMENSIONS

Dimensions in mm unless otherwise specified.

Tolerances (per material type) apply.



V11022

PRODUCT DATA SHEET



PRODUCT CODE
GL0611SIW+

RANGE
GLIDE II

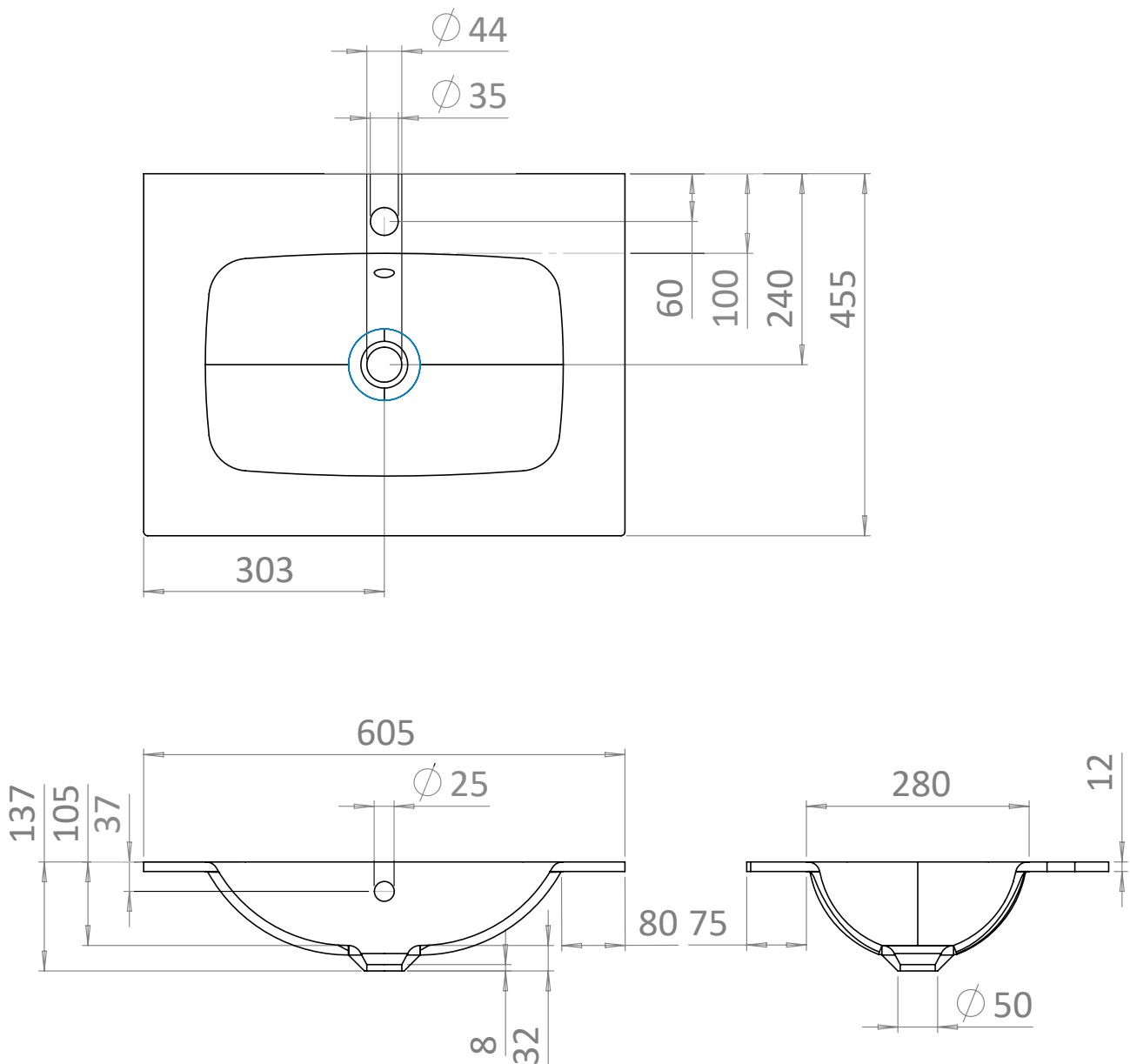
DESCRIPTION
600mm Basin 1TH Ice White

COLOUR	Ice White
MATERIAL	Glass
STANDARDS	EN 31 EN 14688 - CLO
INSTALLATION TYPE	Furniture Mounted
CAPACITY OF WATER AT OVERFLOW LEVEL	15 L
BASIN WASTE SIZE	45mm
TAP HOLES	1TH
OVERFLOW	Yes
WEIGHT	8.3kg
WARRANTY	10 Years

TECHNICAL DIMENSIONS

Dimensions in mm unless otherwise specified.

Tolerances (per material type) apply.



V11022