

PRODUCT DATA SHEET

PRODUCT CODE

LM5000DRWAN+

RANGE

Limit

DESCRIPTION

Limit Single Drawer Unit 500 Royal Walnut

WEBSITE LINK [Click Here](#)



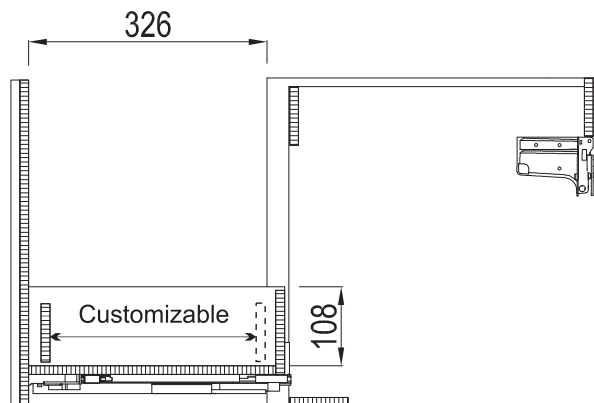
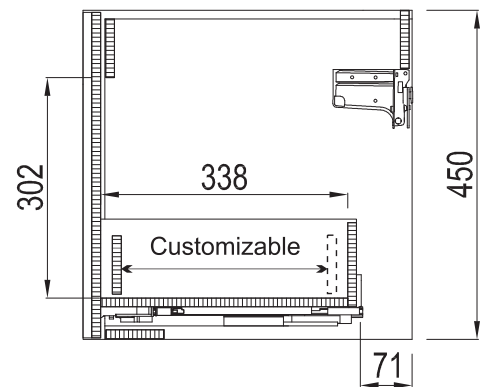
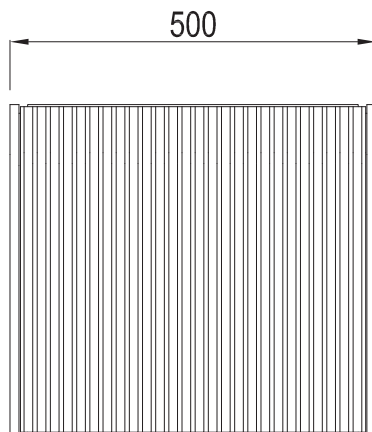
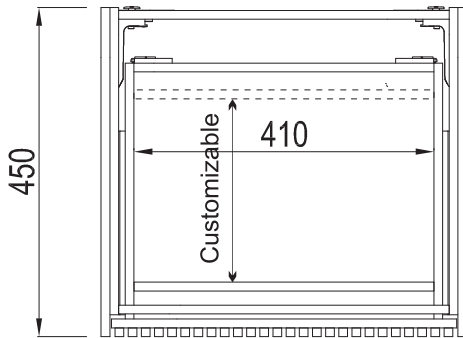
| | |
|-----------------------|--------------|
| CATEGORY | Furniture |
| WARRANTY DETAILS | 10 Years |
| COLOUR | Royal Walnut |
| PRIMARY MATERIAL | MFC |
| INSTALL TYPE | Wall Mounted |
| PRODUCT WIDTH MM | 500 |
| PRODUCT HEIGHT MM | 450 |
| PRODUCT DEPTH MM | 450 |
| PRODUCT NET WEIGHT KG | 11 |

| | |
|-------------------|--------------------------|
| DRAWER BOX | MFC |
| DRAWER RUNNERS | HETTICH QUADRO 4D V6/300 |
| DRAWER EXTENSION | Full extension |
| DRAWER ADJUSTMENT | 4 |
| WALL HANGERS | Yes |
| ADJUSTABLE FEET | No |
| DRAWER CAPACITY | 30kg |
| DRAWER OPERATION | Soft close/push to open |

TECHNICAL DIMENSIONS

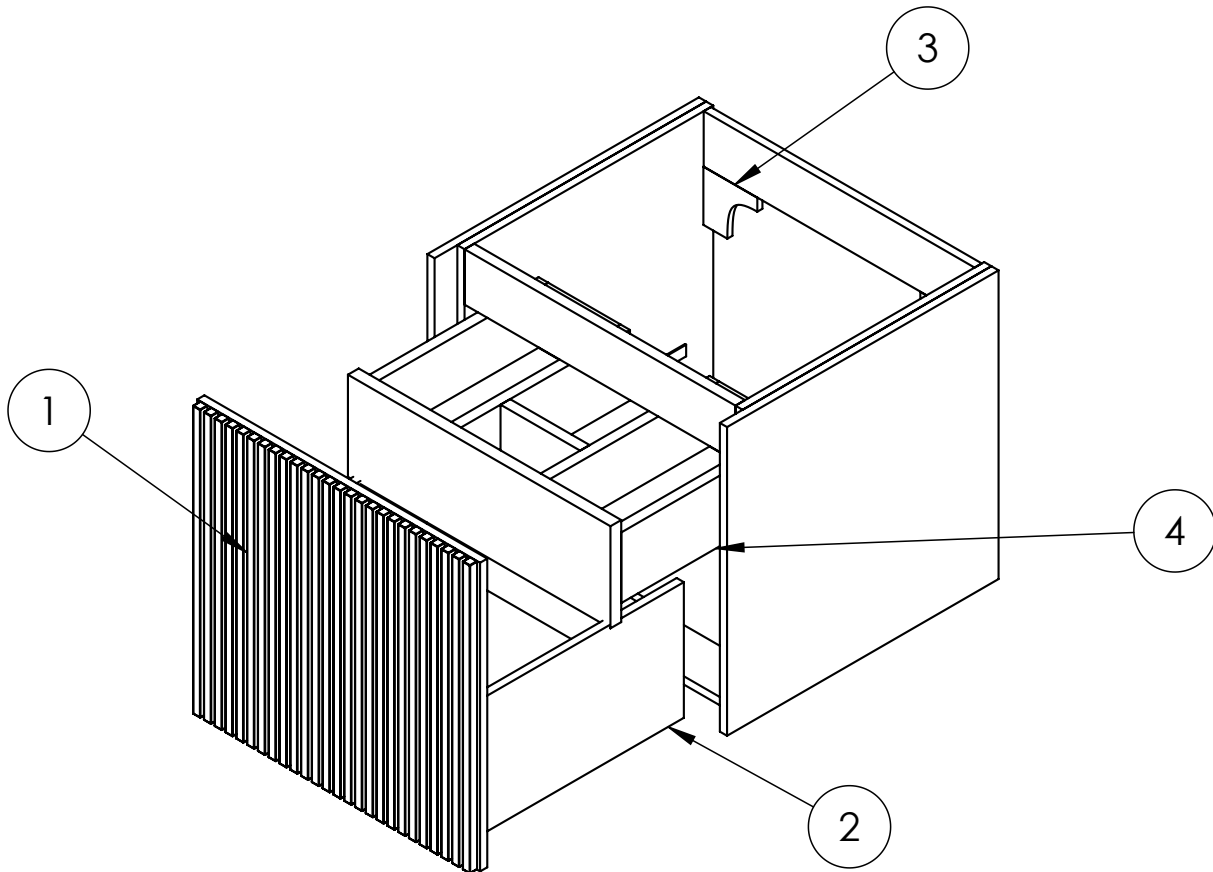
Dimensions in mm unless otherwise specified.

Tolerances (per material type) apply.



SPARES LIST

Only the parts labelled are available as spares.



| NUMBER | PART CODE | DESCRIPTION |
|--------|-----------------|--|
| 1 | DF_LM5000DMOAN+ | Limit Drawer Front For LM5000DMOAN+ |
| | DF_LM5000DSTAN+ | Limit Drawer Front For LM5000DSTAN+ |
| | DF_LM5000DRWAN+ | Limit Drawer Front For LM5000DRWAN+ |
| | DF_LM5000DWSAN+ | Limit Drawer Front For LM5000DWSAN+ |
| 2 | RUNNERSLIMIT_1+ | Set of Drawer Runners x2 Limit Main Drawer |
| 3 | WBRACKETSLIMIT+ | Wall Brackets x2 Limit |
| 4 | RUNNERSLIMIT_2+ | Set of Draw Runners x2 Limit for Internal Drawer (Sold Seperately) |

PRODUCT DATA SHEET



PRODUCT CODE
DE0002SCW+

RANGE
GLIDE II

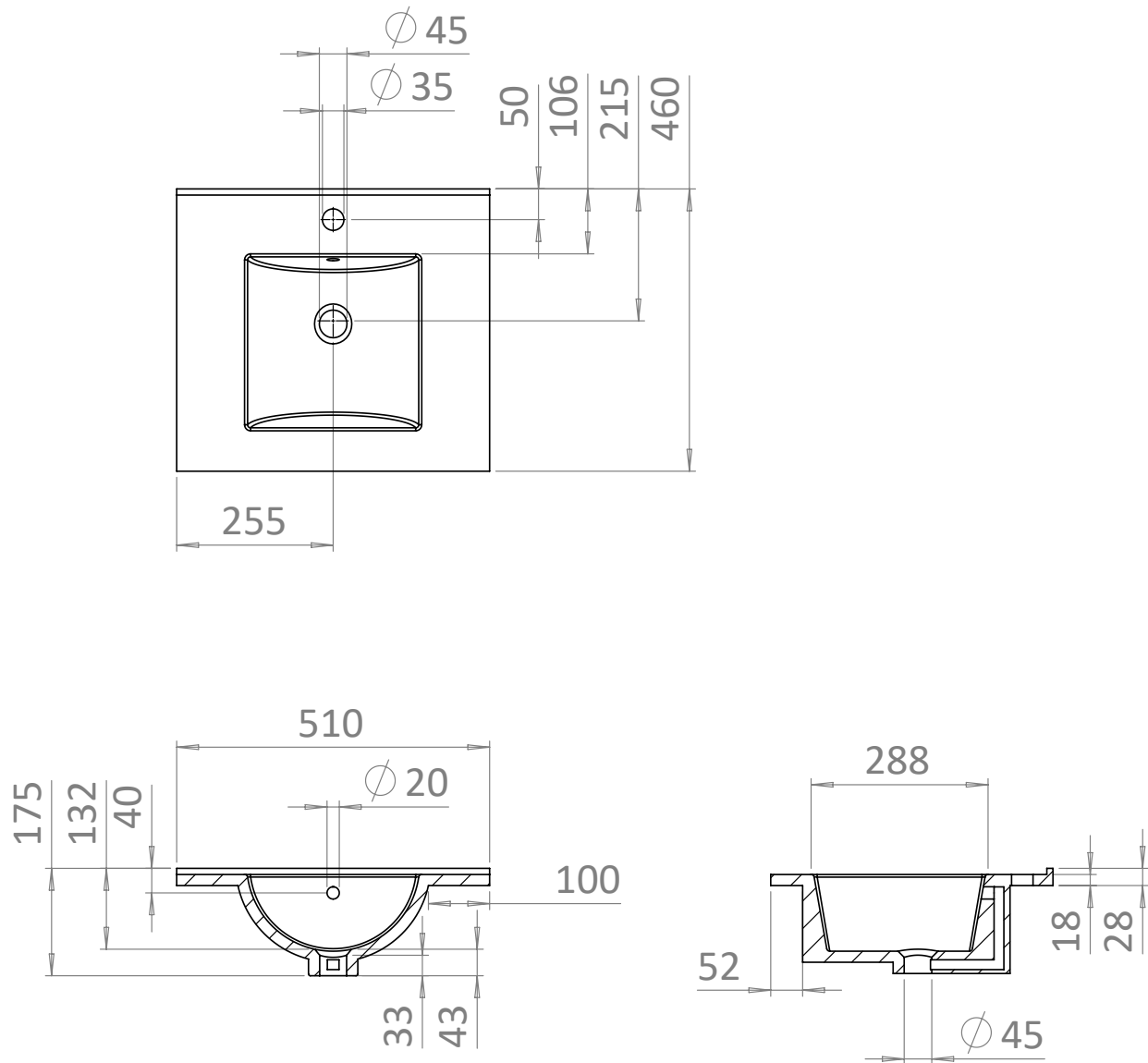
DESCRIPTION
Basin Ceramic 500 White With Overflow

| | |
|-------------------|-------------------------|
| COLOUR | Euro White |
| MATERIAL | Vitreous China |
| STANDARDS | EN 31 EN 14688 - CLO |
| INSTALLATION TYPE | Furniture Mounted |
| BASIN WASTE SIZE | 45mm |
| TAP HOLES | 1 |
| OVERFLOW | Yes |
| WEIGHT | 11kg |
| WARRANTY | 10 Years |

TECHNICAL DIMENSIONS

Dimensions in mm unless otherwise specified.

Tolerances (per material type) apply.



V10522

PRODUCT DATA SHEET



PRODUCT CODE

GL0510SIW+

RANGE

GLIDE II

DESCRIPTION

500mm Basin 0TH Ice White

| | |
|--------|-----------|
| COLOUR | Ice White |
|--------|-----------|

| | |
|----------|-------|
| MATERIAL | Glass |
|----------|-------|

| | |
|-----------|-------------------------|
| STANDARDS | EN 31 EN 14688 - CLO |
|-----------|-------------------------|

| | |
|-------------------|-------------------|
| INSTALLATION TYPE | Furniture Mounted |
|-------------------|-------------------|

| | |
|--|------|
| CAPACITY OF WATER AT OVERFLOW LEVEL | 15 L |
|--|------|

| | |
|------------------|------|
| BASIN WASTE SIZE | 45mm |
|------------------|------|

| | |
|-----------|-----|
| TAP HOLES | 0TH |
|-----------|-----|

| | |
|----------|-----|
| OVERFLOW | Yes |
|----------|-----|

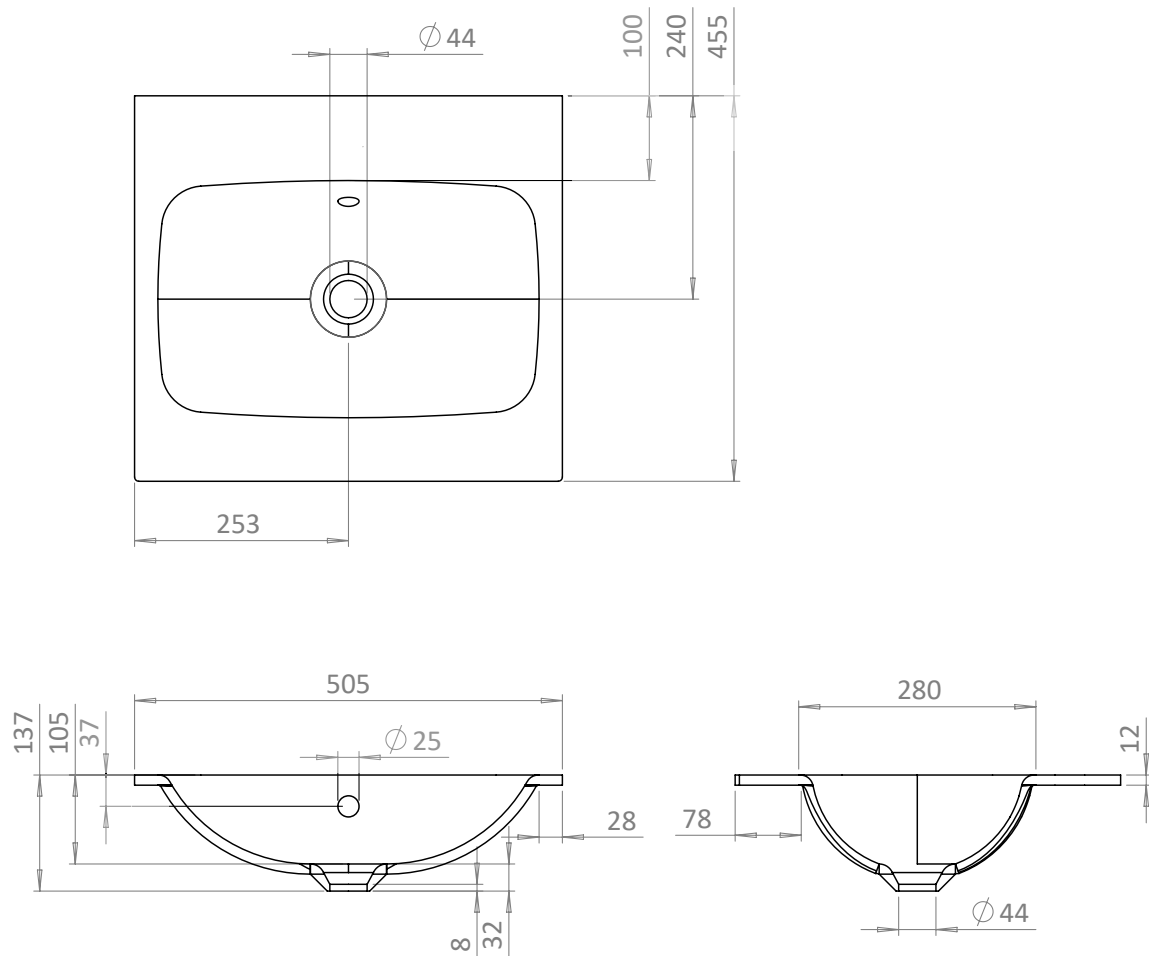
| | |
|--------|-----|
| WEIGHT | 7kg |
|--------|-----|

| | |
|----------|----------|
| WARRANTY | 10 Years |
|----------|----------|

TECHNICAL DIMENSIONS

Dimensions in mm unless otherwise specified.

Tolerances (per material type) apply.



V10522

PRODUCT DATA SHEET



PRODUCT CODE
GL0511SIW+

RANGE
GLIDE II

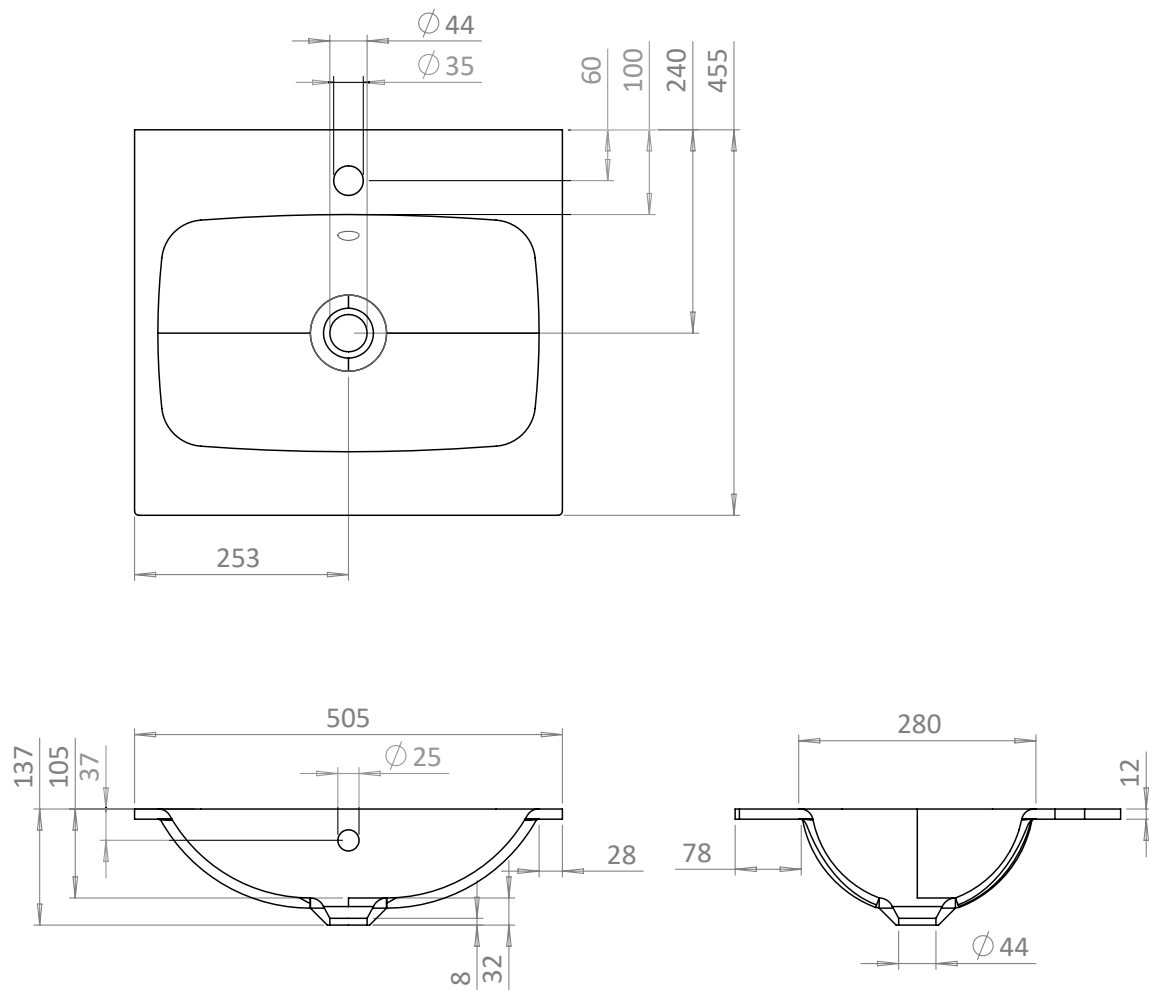
DESCRIPTION
500mm Basin 1TH Ice White

| | |
|-------------------------------------|-------------------------|
| COLOUR | Ice White |
| MATERIAL | Glass |
| STANDARDS | EN 31 EN 14688 - CLO |
| INSTALLATION TYPE | Furniture Mounted |
| CAPACITY OF WATER AT OVERFLOW LEVEL | 15 L |
| BASIN WASTE SIZE | 45mm |
| TAP HOLES | 1TH |
| OVERFLOW | Yes |
| WEIGHT | 7kg |
| WARRANTY | 10 Years |

TECHNICAL DIMENSIONS

Dimensions in mm unless otherwise specified.

Tolerances (per material type) apply.



V10522