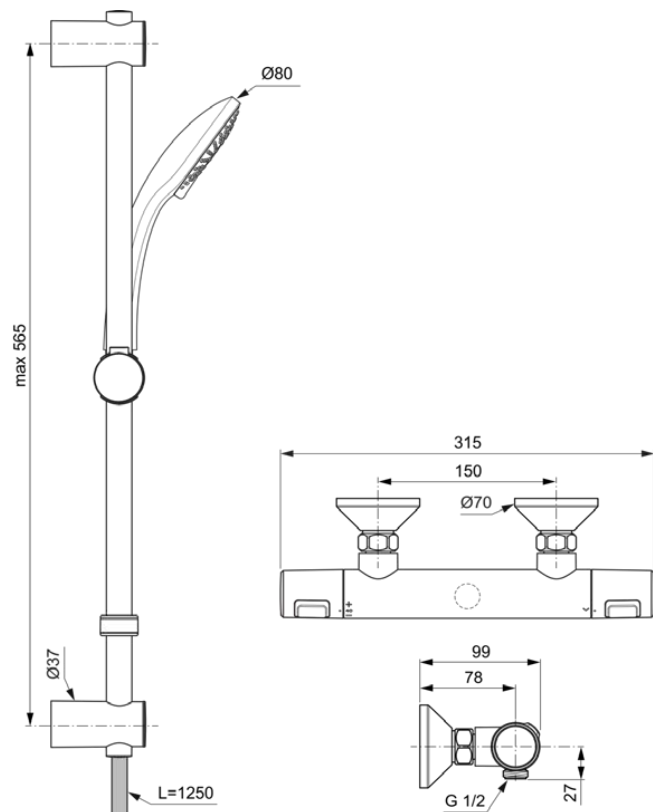


## CERATHERM T25

A7205AA

CERATHERM T25 | Exposed shower mixer 315x99x70 mm in chrome finish | Safety stop, SmartShine

### Image & drawing



### General information

Sub product type	Exposed shower mixer
Brand	Ideal Standard
Suite name	CERATHERM T25
Colour code	AA
Colour description	Chrome
Surface finish effect	glossy
Height (mm)	70
Width (mm)	315
Length / Projection (mm)	99
EAN code	4015413345750
Net weight (kg)	2.20

### Features



Safety stop



SmartShine

### Downloads

- [BIM-UK](#)
- [Declaration of Conformity](#)
- [Installation Guide](#)
- [Spare Parts List](#)

### Product standard & certifications

ACS certificate name	20 ACC LY 069
----------------------	---------------

### Product specifications

Amount of escutcheon(s)	2
Thermostatic	Yes
Type of temperature control	Manually operated
With handle(s)	Yes
Amount of handles	1
Handle position	Lateral
Type of handle	Rotary knob
Handle application	Volume & temperature control
Material of handle	Plastic
With escutcheon(s)	Yes
Shape of escutcheon(s)	Round
Body material	Brass
Surface cover	chromium-plated
SmartShine	Yes
With head shower	No
Shower hose connection thread	G 1/2
min. operating pressure (kPa)	50
With handshower set	No
With shower kit	Yes
With S-couplings	No
PVD technology	No
Easy-care surface IdealPlus	No
Max. flow rate at 300 kPa (l)	8

Valve technology

PreciTherm

Water activation

Ceramic valve

Cartridge fixation

Rotating

Valve's nominal size

Thread included

G1/2G3/8

## Your local contact

### België • Belgique

Ideal Standard Produktions GmbH  
Ikaroslaan 18  
B-1930 Zaventem  
☎ +32 2 325 66 00  
✉ +32 2 325 66 01  
www.idealstandard.be

### България

Идеал Стандарт - Видима АД  
ул. "Марин Попов" 53  
гр. Севлиево, 5400  
☎ +359 885 938 880  
✉ office@idealstandard.com  
www.idealstandard.bg

### Česká republika

Ideal Standard s.r.o.  
Zemská 623  
41574 Teplice  
☎ +420 (0)-417-265 11  
✉ +420 (0)-417-265 15  
www.idealstandard.cz

### Hrvatska

Ideal Standard Hrvatska  
Lopatinečka ul. 8  
10000, Zagreb  
☎ +385 91 229 9304  
www.idealstandard.hr

### Danmark

Ideal Standard Skandinavia AS  
Tulipvej 1  
7100 Vejle (Denmark)  
☎ +45 758 410 10  
✉ +45 758 410 24  
www.idealstandard.dk

### Deutschland

Ideal Standard GmbH  
Euskirchener Straße 80  
53121 Bonn  
☎ +49 (0)228 521-0  
✉ +49 (0)228 521-241  
✉ idealstandard.de@idealstandard.com  
www.idealstandard.de

### Éire

Ideal Standard Éire  
2nd Floor, Unit 3103 Lake Drive Citywest  
Business Campus Tallaght Dublin 24 YXW2  
☎ +353 1 4564525  
www.idealstandard.ie

### España

Ideal Standard Iberia S.L.U  
Riera Principal Nr. 8  
08328 Alella (Barcelona - España)  
☎ +34 93 561 80 00  
www.idealstandard.es

### Ελλάδα

Ideal Standard S. A. Γραφεία Αθηνών:  
Λ. Μεσογείων 265, 15451 Ν.  
Ψυχικό, Αθήνα  
☎ +2106790800  
www.idealstandard.gr

### France

Ideal Standard France - Siège social  
39Rue St. Sabin  
75011 Paris  
☎ +33 (0)1 49 38 81 34  
✉ sav.idealstandard@idealstandard.com  
(demandes techniques) /  
devis.chantier@idealstandard.com  
(demandes commerciales)  
www.idealstandard.fr

### Italia

Ideal Standard (Italia) Srl  
Via Giosuè Borsi 9  
20143 Milano, Italia  
☎ +39 (0)2 28881  
✉ info@idealstandard.it  
www.idealstandard.it

### Nederland

Ideal Standard Nederland BV  
Hambakenwetering 3  
5231 DD 's-Hertogenbosch  
☎ +31 (0)-77 355 08 08  
✉ +31 (0)-77 354 21 86  
www.idealstandard.nl

### Österreich

Ideal Standard GmbH  
Zweigniederlassung Österreich  
Erzherzog-Karl-Str. 131-135  
1220 Wien Österreich  
☎ +43 125 66 222-0  
✉ +43 125 66 222-625  
www.idealstandard.at

### Polska

Ideal Standard Polska  
Ul. Ostrowskiego 7  
53-238 Wrocław  
☎ +48 71 78 68 301  
www.idealstandard.po

### România

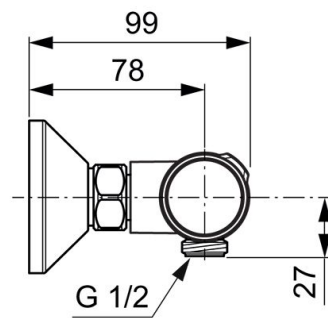
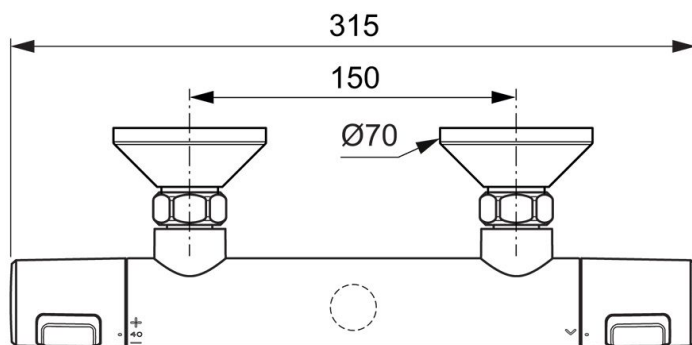
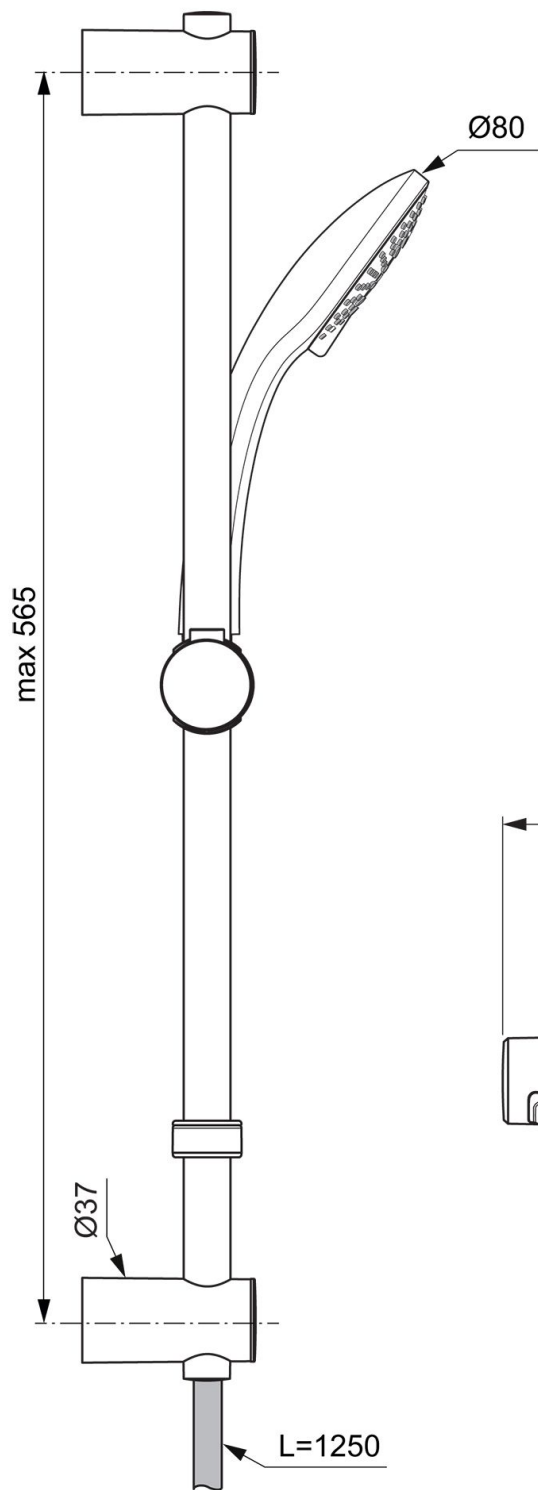
Ideal Standard Representative Office România  
Calea Victoriei 109, Etaj 1, Sector 1  
București, 010069  
☎ +40 746 050 408  
✉ officebucharest@idealstandard.com  
www.ideal-standard.ro

### Srbija

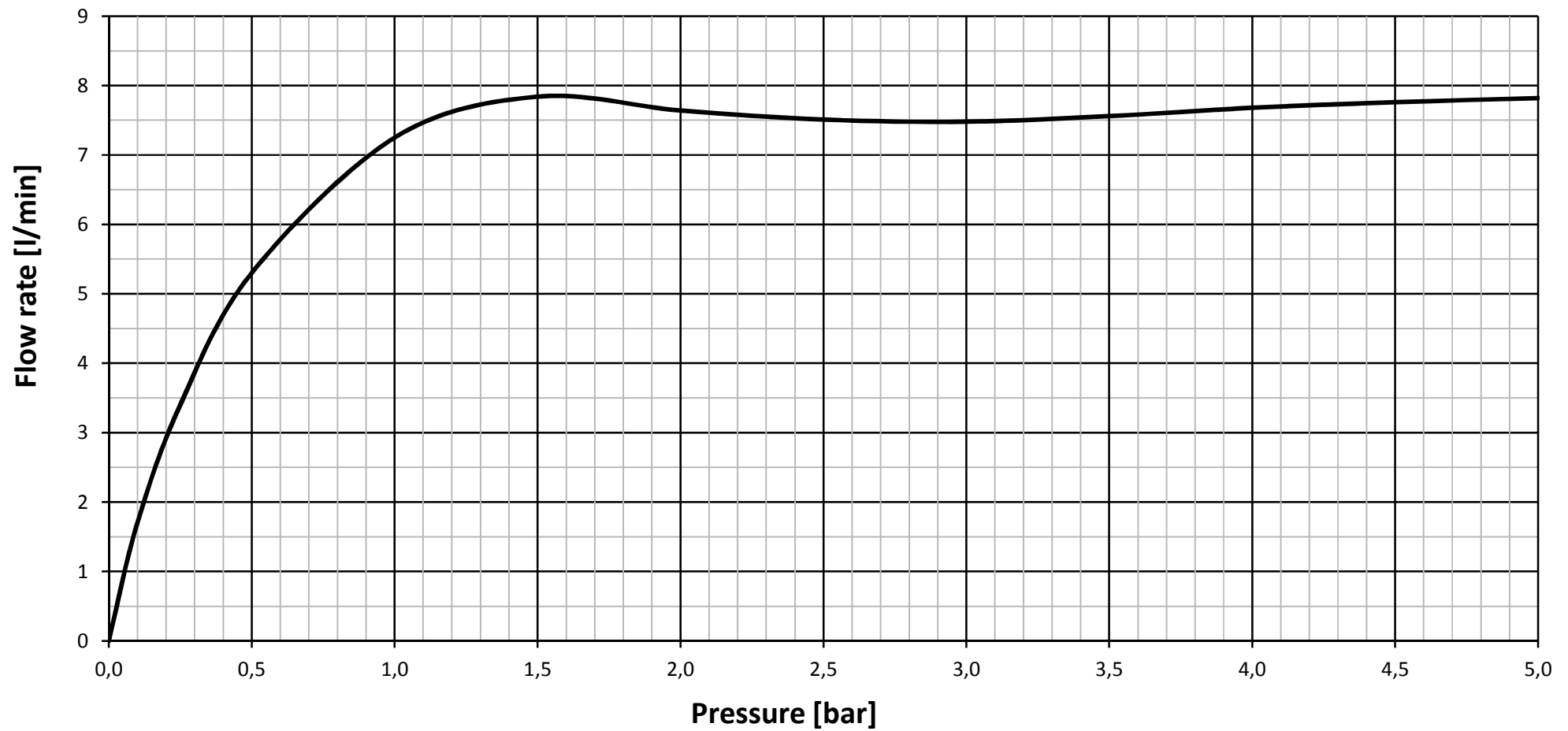
Ideal Standard - Vidima AD  
Drinčićeve br.19, I sprat, stan br.8  
11000 Beograd Srbija  
☎ +381 11 7138 058  
www.idealstandard.rs

### United Kingdom

Ideal Standard (UK) Ltd  
The Bathroom Works National Avenue  
Kingston Upon Hull  
HU5 4HS  
☎ +44 (0)-1482 346 461  
✉ +44 (0)-1482 445 886  
www.idealstandard.co.uk



## A7205AA- outlet series



— Flow rate in mixed water position

We

Ideal Standard International NV

*name of manufacturer or representative established in the Community*

Corporate Village - Gent Building  
Da Vincilaan 2  
1935 Zaventem / Belgium

*full address*

*declare below our exclusive responsibility that the following products of sanitary tap ware:*

A4457AA	CERATHERM T25 SHR MXR EXPSD &WBWS - FR
A7201AA	CT T25 BRAUETHERMOSTAT AP
A7201XG	CT T25 BRAUETHERMOSTAT AP S.BLACK
A7202AA	CERATHERM T25 SHR MXR EXP FIX KIT UK
A7203AA	CT T25 BR.TH.IR 60CM 3F.HB DM. 100MM
A7204AA	CT T25 BR.TH.IR 90CM 3F.HB DM. 100MM
A7205AA	CERATHERM T25 SHR MXR EXP & SHS 600MM UK
A7206AA	CT T25 BADE THERMOSTAT AP
A7207AA	CERATHERM T25 BSH MXR DMTD FIX KIT UK
A7208AA	CT T25 D.SYST.KB DM. 200MM,3F. HB 100
A7209AA	CERATHERM T25 SHR MXR EXPSD &WBWS UK
A7544XG	CT T25 BADE THERMOSTAT AP S.BLACK
A7545XG	CT T25 D.SYST.KB DM.200MM1F.HB100 S.B.
A7546XG	CT T25 D.S.TELESK.KB20CM HB1F 100 S.B.
A7569XG	CERATHERM T25 SHR MXR EX & SHS 600 UK
A7571XG	CERATHERM T25 SHRSYS TH EXPSD SBLK
A7586XG	CERATHERM T25 SHRSYS TH EXP STICK MBLK
A7590AA	CT T25 BSH SHRSYS MXR AP CHROM
A7627AA	CERATHERM T25 SHRSYS TH EXP HD/250
A7698AA	CERATHERM T25 BSH TH DMTD LEGS & KIT CR
A7701AA	CT T25 D.SYSTEM MIT TELESKOPFUNKTION
BC748XG	CT T25 D.SYST.KB DM300MM STICK HB S.B.
F1768AA	CERATHERM T25 SHR MXR EXPSD
F1769AA	CERATHERM T25 SHR MXR EXPSD &WBWS

*name, type, model*

# DECLARATION OF CONFORMITY

*to which this declaration refers, conforms to the following regulations or other regulation documents:*

DIN EN 200	01/10/2008	DIN EN 246	01/11/2003	DIN EN 248	01/05/2017
DIN EN 1111	01/09/2017	DIN EN 1112	01/06/2008	DIN EN 1113	01/06/2015
DIN EN 1717	01/08/2011	DIN EN 12164	01/11/2016	DIN 4109-1	01/01/2018

All materials used in contact with drinking water are in accordance with KTW, ACS and WRAS requirements.

All metal components used in contact with drinking water are accordance to the UBA positive list from March 5<sup>th</sup>, 2019 (became German law April 10<sup>th</sup>, 2017).

*title and/or number and date of publication of the regulation and/or of other regulation documents*

Brussel, Belgium; February 28<sup>th</sup>, 2022

*Location; Date*



.....  
Bert Depiere  
*VP Fittings Category*