

PRODUCT DATA SHEET

Burlington®

PRODUCT CODE
GU0851SCW

RANGE
Guild

DESCRIPTION
Guild Basin 85cm 1TH White

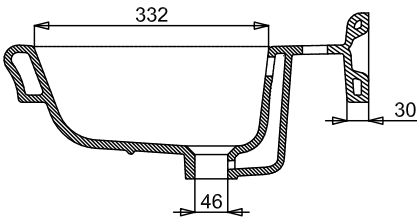
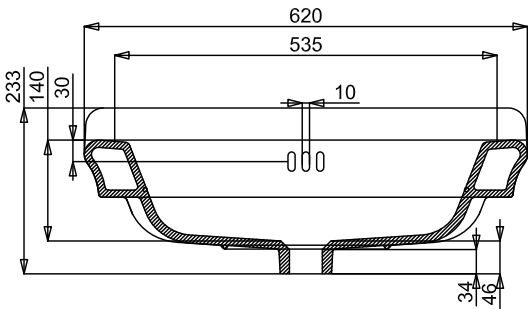
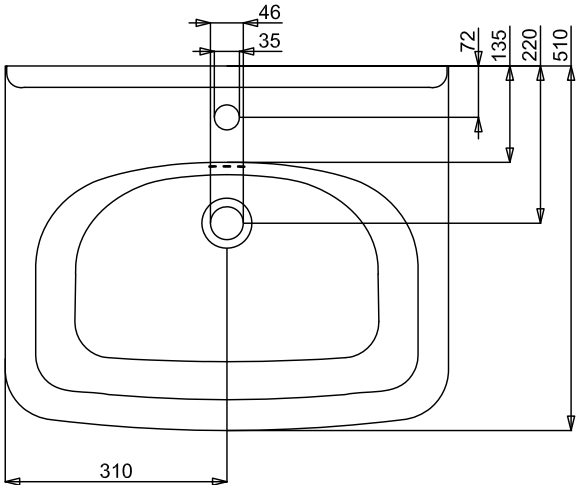


| | |
|-----------------------|---------------------------|
| CATEGORY | Sanitaryware |
| WARRANTY DETAILS | Lifetime |
| COLOUR | Gloss White |
| FINISH APPLICATION | Glazed |
| PRIMARY MATERIAL | Fine Fire Clay |
| INSTALL TYPE | Wall Mounted |
| PRODUCT WIDTH MM | 850 |
| PRODUCT HEIGHT MM | 233 |
| PRODUCT DEPTH MM | 550 |
| PRODUCT NET WEIGHT KG | 24.5 |
| STANDARDS | EN 31:2011, EN 14688:2015 |

| | |
|------------------|------|
| TAP HOLES | 1TH |
| FIXINGS INCLUDED | No |
| OVERFLOW | Yes |
| BASIN WASTE SIZE | 45mm |

TECHNICAL DIMENSIONS

Dimensions in mm unless otherwise specified.
Tolerances (per material type) apply.



SPARES LIST

Only the parts labelled are available as spares.

NO SPARES AVAILABLE

PRODUCT DATA SHEET

Burlington®

PRODUCT CODE
GU0853SCW

RANGE
Guild

DESCRIPTION
Guild Basin 85cm 3TH White

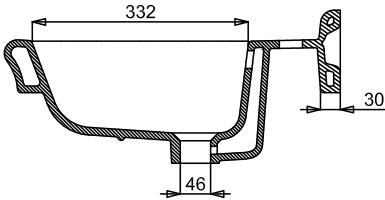
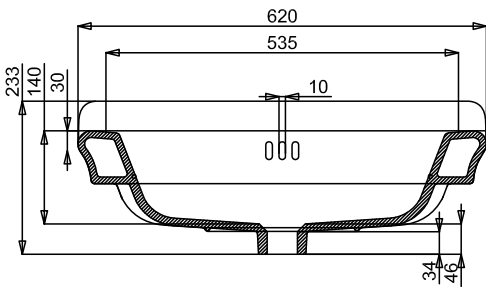
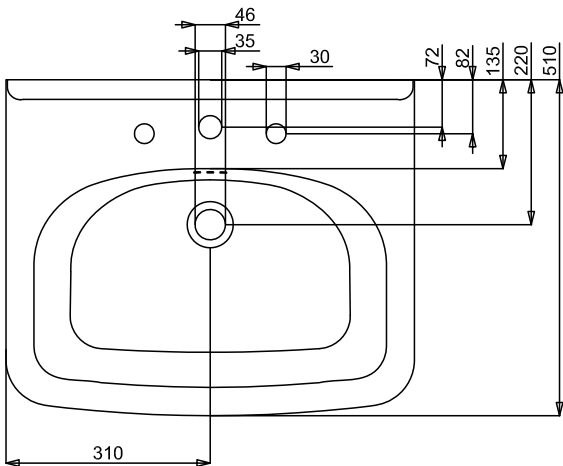


| | |
|-----------------------|---------------------------|
| CATEGORY | Sanitaryware |
| WARRANTY DETAILS | Lifetime |
| COLOUR | Gloss White |
| FINISH APPLICATION | Glazed |
| PRIMARY MATERIAL | Fine Fire Clay |
| INSTALL TYPE | Wall Mounted |
| PRODUCT WIDTH MM | 850 |
| PRODUCT HEIGHT MM | 233 |
| PRODUCT DEPTH MM | 550 |
| PRODUCT NET WEIGHT KG | 24.5 |
| STANDARDS | EN 31:2011, EN 14688:2015 |

| | |
|------------------|------|
| TAP HOLES | 3TH |
| FIXINGS INCLUDED | No |
| OVERFLOW | Yes |
| BASIN WASTE SIZE | 45mm |

TECHNICAL DIMENSIONS

Dimensions in mm unless otherwise specified.
Tolerances (per material type) apply.



SPARES LIST

Only the parts labelled are available as spares.

NO SPARES AVAILABLE

PRODUCT DATA SHEET

Burlington®

PRODUCT CODE
GU0101CW

RANGE
Guild

DESCRIPTION
Guild Pedestal White



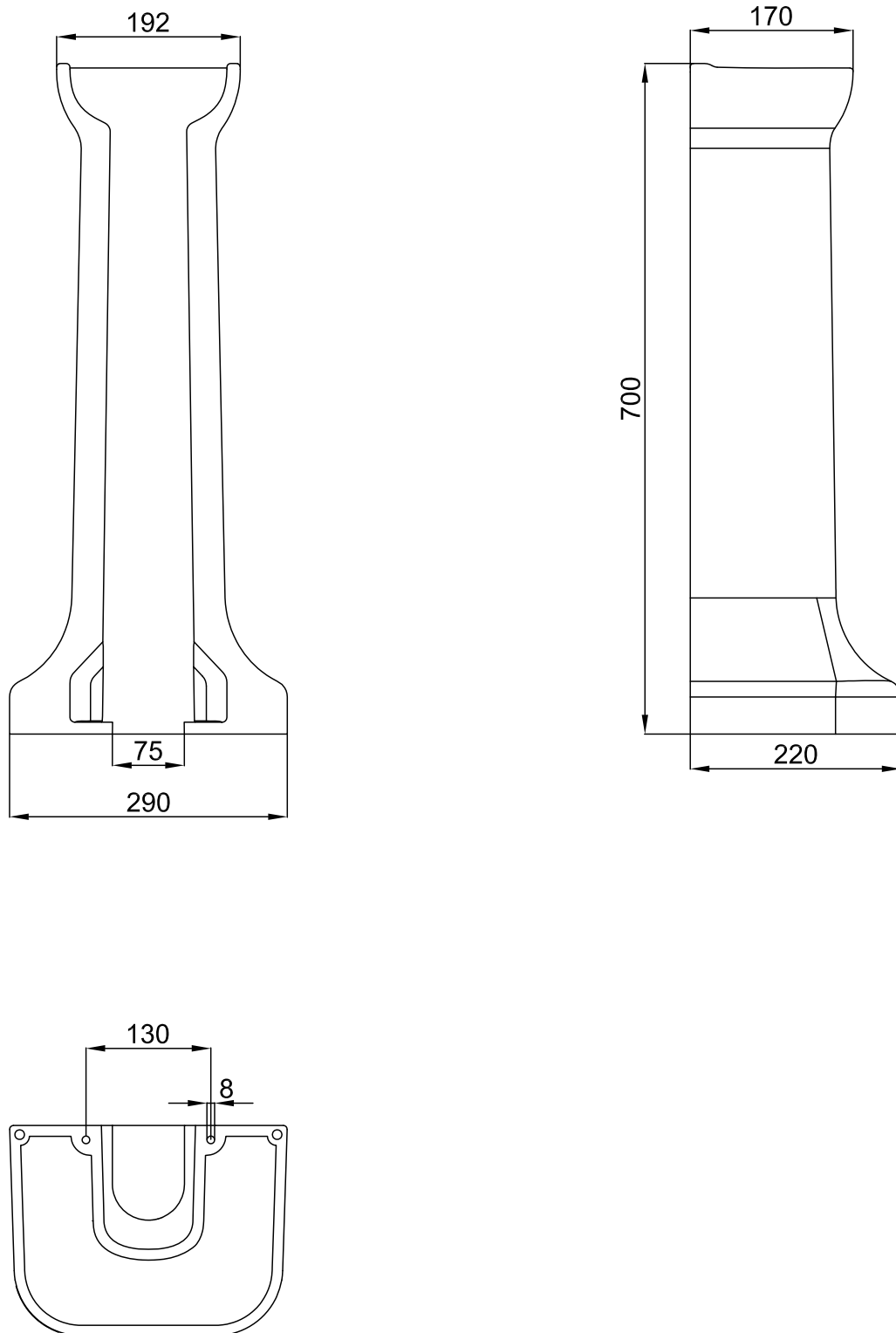
| | |
|-----------------------|---------------------------|
| CATEGORY | Sanitaryware |
| WARRANTY DETAILS | Lifetime |
| COLOUR | Gloss White |
| FINISH APPLICATION | Glazed |
| PRIMARY MATERIAL | Fine Fire Clay |
| INSTALL TYPE | Floor Mounted |
| PRODUCT WIDTH MM | 220 |
| PRODUCT HEIGHT MM | 700 |
| PRODUCT DEPTH MM | 290 |
| PRODUCT NET WEIGHT KG | 13.3 |
| STANDARDS | EN 31:2011, EN 14688:2015 |

| | |
|------------------|----|
| FIXINGS INCLUDED | No |
|------------------|----|

TECHNICAL DIMENSIONS

Dimensions in mm unless otherwise specified.

Tolerances (per material type) apply.



SPARES LIST

Only the parts labelled are available as spares.

NO SPARES AVAILABLE