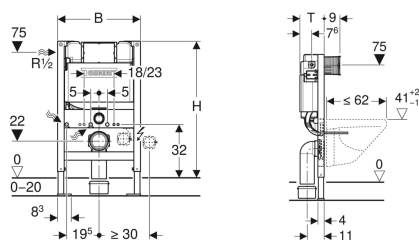


## Geberit Duofix element for wall-hung WC, 82 cm, with Kappa concealed cistern 15 cm



Example image



### Application purposes

- For drywall construction
- For installation in part-height prewall installations
- For wall-hung WCs with connection dimensions in accordance with EN 33:2011
- For wall-hung WCs with projection up to 62 cm
- For floor constructions 0–20 cm

### Characteristics

- Self-supporting frame, powder-coated
- Galvanized feet
- Feet adjustable 0–20 cm
- Concealed cistern with front actuation
- Concealed cistern, fully insulated against condensation
- Cistern fulfils standard requirements in accordance with EN 14055, Class II

### Scope of delivery

- Water supply connection Rp 1/2" - R 1/2", compatible with MF, with integrated angle stop valve and hand wheel
- Protection box for service opening
- 2 wall anchors
- 2 protection plugs

- Immediate post flush possible with factory setting
- Water supply connection on the left
- Protection cover box for service opening protects against moisture and dirt
- Protection box for service opening can be cut to length without tools
- With conduit pipe for feed pipe for connection of Geberit AquaClean shower toilets
- Fastening option for electrical connection

### Technical data

|                                      |             |
|--------------------------------------|-------------|
| Flow pressure                        | 0.1-10 bar  |
| Maximum operating temperature, water | 25 °C       |
| Flush volume, factory setting        | 5.8 and 3 l |
| Flush volume small, adjustment range | 3-4 l       |

| Art. no.     | B     | H     | T     |     |
|--------------|-------|-------|-------|-----|
| 111.260.00.3 | 50 cm | 82 cm | 15 cm | New |