

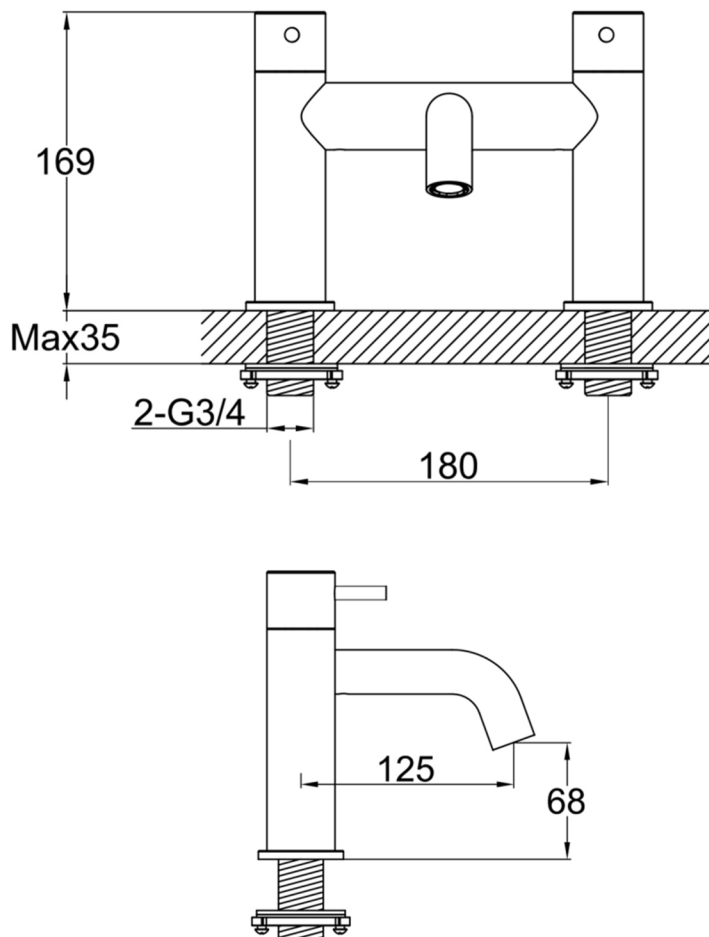


# Technical Data Sheet

Product range: INOX

Product code: IX223

Finishes Available: Stainless Steel



Min Pressure:

HP 1

Approvals:

WRAS

Connections:

G 1/2"

Warranty:

15 Years

## Flow Rate

0.5Bar: 10.8L/min

1Bar: 12.5L/min

2Bar: 17.3L/min

3Bar: 21.5L/min