

PRODUCT DATA SHEET



PRODUCT CODE
FOMOD440TRIMM

RANGE
Module

DESCRIPTION
Module Foile 2 Handle With Bath Spout & Handshower Matt Black

WEBSITE LINK [Click Here](#)

| | |
|-----------------------|----------------|
| CATEGORY | Brassware |
| WARRANTY DETAILS | 15 Years |
| COLOUR | Matt Black |
| FINISH APPLICATION | Epoxy Coated |
| PRIMARY MATERIAL | Brass |
| INSTALL TYPE | Wall Mounted |
| PRODUCT WIDTH MM | 385 |
| PRODUCT HEIGHT MM | 280 |
| PRODUCT DEPTH MM | 277 |
| PRODUCT NET WEIGHT KG | 2.4 |
| STANDARDS | BS EN 200:2008 |

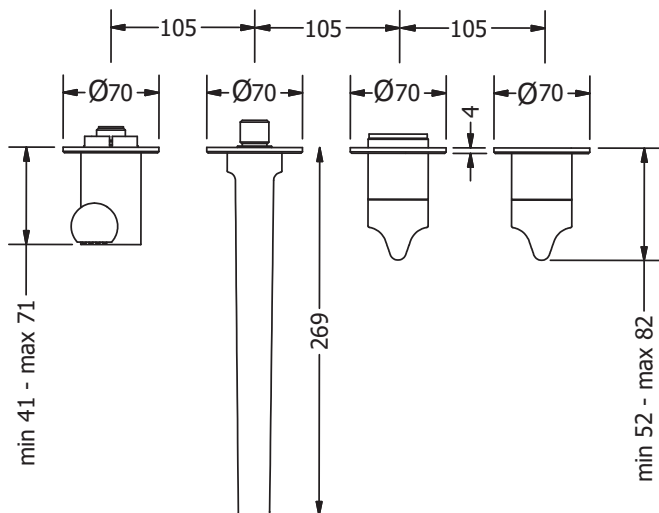
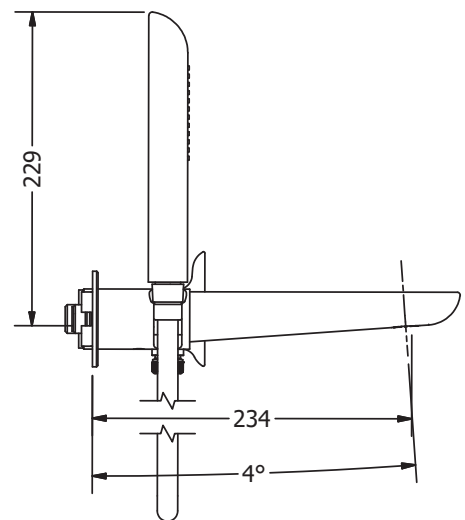
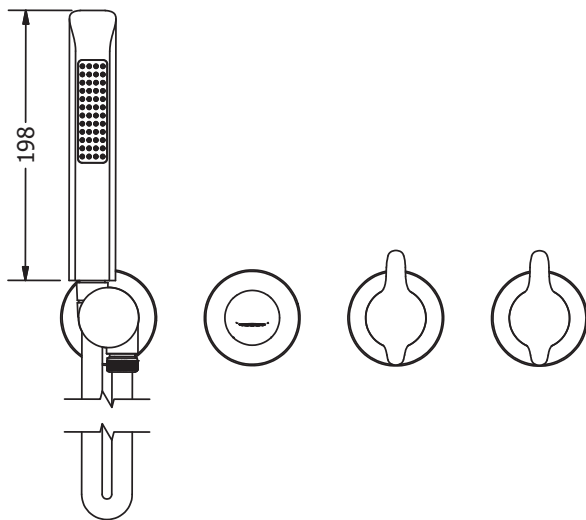
| | |
|------------------------------------|-------------------------------------|
| MINIMUM PRESSURE (BAR) | 1 |
| MAX WORKING PRESSURE (BAR) | 5 |
| NUMBER OF OUTLETS | 2 |
| HEADWORK | 3/4" Quarter turn ceramic cartridge |
| SPOUT PROJECTION | 230 |
| INLET CONNECTIONS THREAD | G1/2" |
| FLOW REGULATOR | Cache M18.5x1 |
| WASTE INCLUDED | No |
| ANTI-SCALD | No |
| ENERGY SAVING | No |
| SHOWER HOSE & HANDSET ARE INCLUDED | Yes |

| | | | | | | | |
|---------------------|-----|-----|----|----|----|----|----|
| PRESSURE (BAR) | 0.2 | 0.5 | 1 | 2 | 3 | 4 | 5 |
| PRIMARY FLOWRATE | | | 10 | 14 | 18 | 18 | 18 |
| HANDSET FLOWRATE | | | | | | | |
| MASSAGE FLOW RATE | | | | | | | |
| AIR FLOW RATE | | | | | | | |
| WIRE FLOW RATE | | | | | | | |
| WATERFALL FLOW RATE | | | | | | | |
| MIST FLOW RATE | | | | | | | |
| HANDSPRAY FLOW RATE | | | | | | | |

TECHNICAL DIMENSIONS

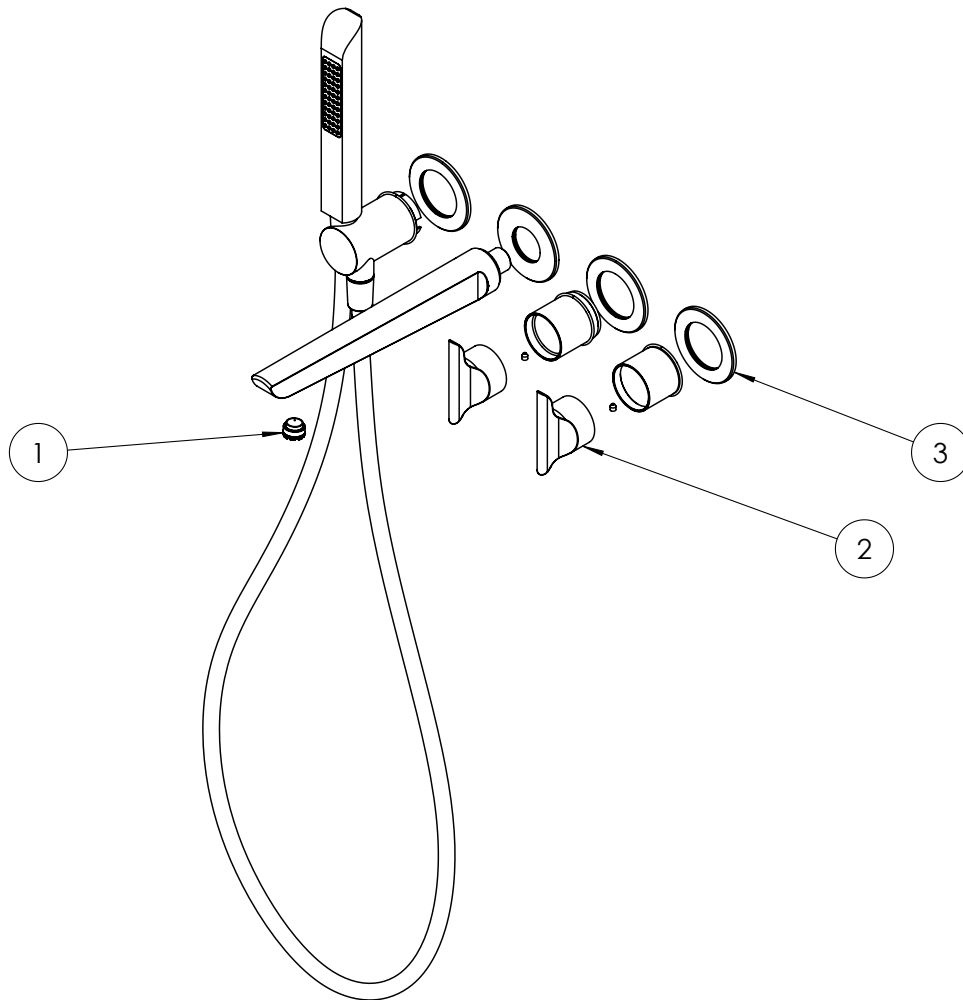
Dimensions in mm unless otherwise specified.

Tolerances (per material type) apply.



SPARES LIST

Only the parts labelled are available as spares.



| NUMBER | PART CODE | DESCRIPTION |
|--------|------------|---------------------------------------|
| 1 | 57FLSP004 | FO0370 Aerator |
| 2 | 57FLSP008C | Foile Module Handle Chrome |
| | 57FLSP008F | Foile Module Handle Brushed Brass |
| | 57FLSP008M | Foile Module Handle Matt Black |
| 3 | 57FLSP014C | Foile Module Wall Plate Chrome |
| | 57FLSP014F | Foile Module Wall Plate Brushed Brass |
| | 57FLSP014M | Foile Module Wall Plate Matt Black |

PRODUCT DATA SHEET



PRODUCT CODE
MOD440R

RANGE
Module

DESCRIPTION
Module 2 Outlet Valve With Outlet For
Bath Spout and Handshower

| | |
|---------------------------|-----------------------------------|
| MATERIAL | Brass |
| INSTALLATION TYPE | Wall Mounted |
| STANDARDS | EN 1111:2017 |
| HEADWORK | Thermo Cartridge Flow Controls |
| INLET CONNECTIONS THREAD | G3/4" |
| OUTLET CONNECTIONS THREAD | G3/4" |
| WEIGHT | 5kg |
| WARRANTY | 15 Years (5 Years Cartridge) |

| | |
|---------------|-------|
| MIN. PRESSURE | 1 Bar |
| MAX. PRESSURE | 5 Bar |

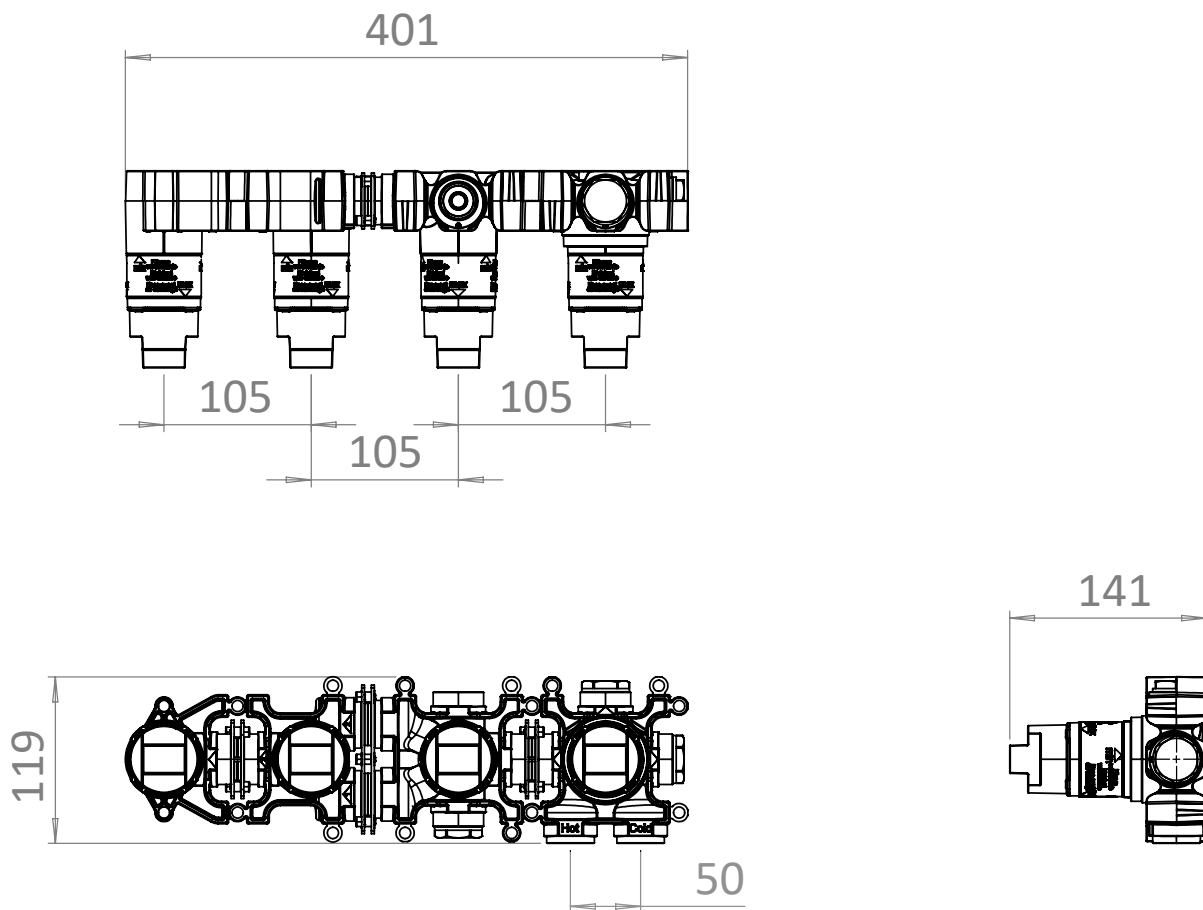
PROMOD440TRIMx - 2 OUTLET

| | | FLOWRATE | | |
|----------------|-----|----------------------|-------------------|--------------------|
| PRESSURE (BAR) | | EXIT 1 TOP OR BOTTOM | EXIT 2 BATH SPOUT | EXIT 3 HAND SHOWER |
| MID | 0.5 | 8.5 | 8 | 4.1 |
| | 1 | 12.4 | 11.7 | 6 |
| | 2 | 18 | 17 | 8.5 |
| HIGH | 3 | 22 | 21 | 10.6 |
| | 4 | 25.6 | 24 | 12.3 |
| | 5 | 28.5 | 26.7 | 13.8 |

TECHNICAL DIMENSIONS

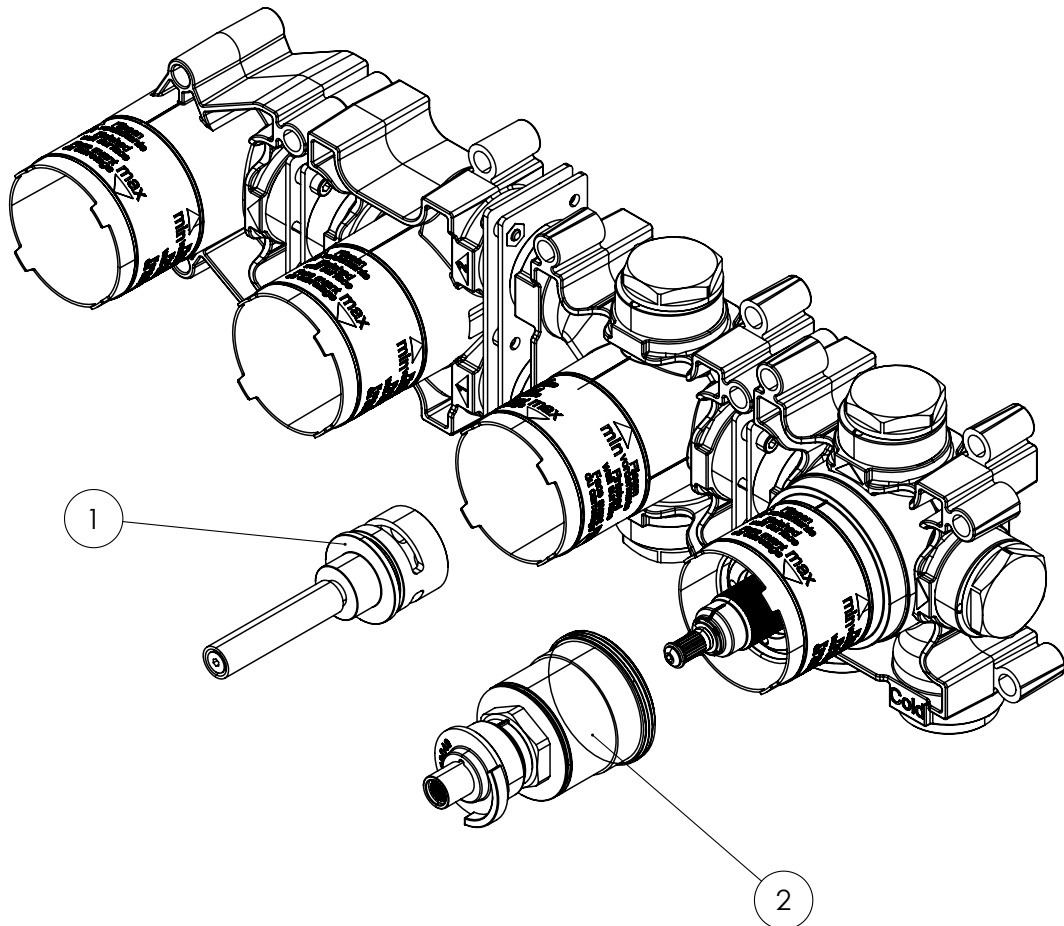
Dimensions in mm unless otherwise specified.

Tolerances (per material type) apply.



V10622

SPARES DIAGRAM



| NUMBER | PART CODE | DESCRIPTION |
|--------|-----------------|---------------------------------|
| 1 | E250005.000HESC | Module 2 Way Diverter Cartridge |
| 2 | E250031.000HESC | Module Thermo Cartridge |

Only the parts labelled are available as spares.

V10822