

Revive Shower Head with Air System with Waterfall

FH2000C

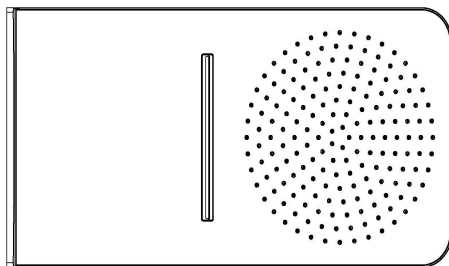
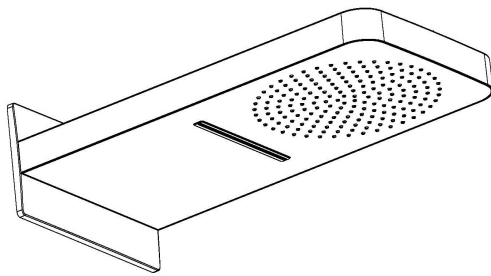
Disply Revive Fixed Head with Air System with Waterfall

FHDIS2000C

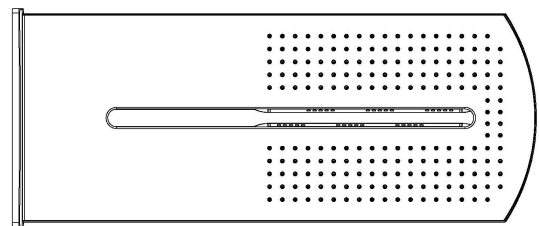
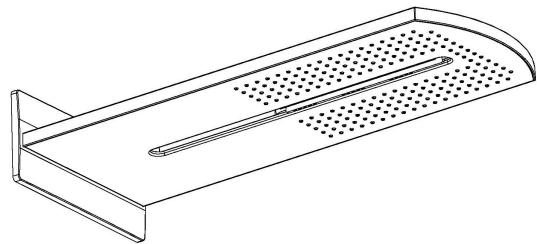
Elite Overhead Shower/Uniqe Waterfall with Air System

FH2000UC

FH2000C & FHDIS2000C



FH2000UC



This product should only be fitted by a qualified plumber to NVQ (National Vocational Qualification) or SNVQ (Scottish National Vocational Qualification) Level 3. Should the installation be completed by a non-qualified person then the guarantee may be considered invalid.

For a claim made under our warranty written certification of your installers credentials can be required. For further information or to find a qualified installer in your area please visit the Institute of Plumbers website - [www.iphe.org.uk](http://www.iphe.org.uk)

#### THE QUALIFICATIONS

At present, to be a plumber you need to follow the National Vocational Qualification (NVQ) route (Scottish National Vocational Qualification - SNVQ - in Scotland). These qualifications are made up of theory and practical work in the classroom/purpose built training facility and work based experience with a working plumber. Colleges should help students find a work placement, although many students organise it themselves.

The SNVQ qualification works in levels. All recently qualified plumbers should hold SNVQ Level 2 as basic with Level 3 as the preferred level. Level 2 will give you the foundation you need for a career in plumbing and teach you domestic plumbing to a satisfactory level. Level 3 is more comprehensive and deals with domestic, commercial and industrial plumbing along with aspects such as gas - if you want to one day set up your own business, this is the level to reach. The Institute of Plumbing and Heating Engineering, and the industry as a whole recommends that all plumbers reach a minimum of Level 3.

Reaching Level 3 has other advantages. The Institute runs a Master Plumber Certificate, which only those attaining Level 3 or equivalent can reach as long as they have the relevant experience as well. Those with SNVQ Level 3 can (once in membership with the Institute for five years as a Member MIPHE) gain Engineering Technician EngTech status with the Engineering Council (UK).

#### INSTALLATION INSTRUCTIONS

crosswater<sup>x</sup>

## IMPORTANT - Please read before installation

Please read these instructions carefully before starting installation and keep in a safe place for future reference.

Check the contents of the pack carefully before installation. Crosswater will not be held responsible for any de-fit / re-fit costs where faulty product has been fitted. If any fault is found with the product, it must be reported immediately to the manufacturer.

We do not accept responsibility for any problems that may occur through incorrect installation.

The success of the installation is, of course, dependant on the alignment and construction of the walls to which fixing is to be carried out.

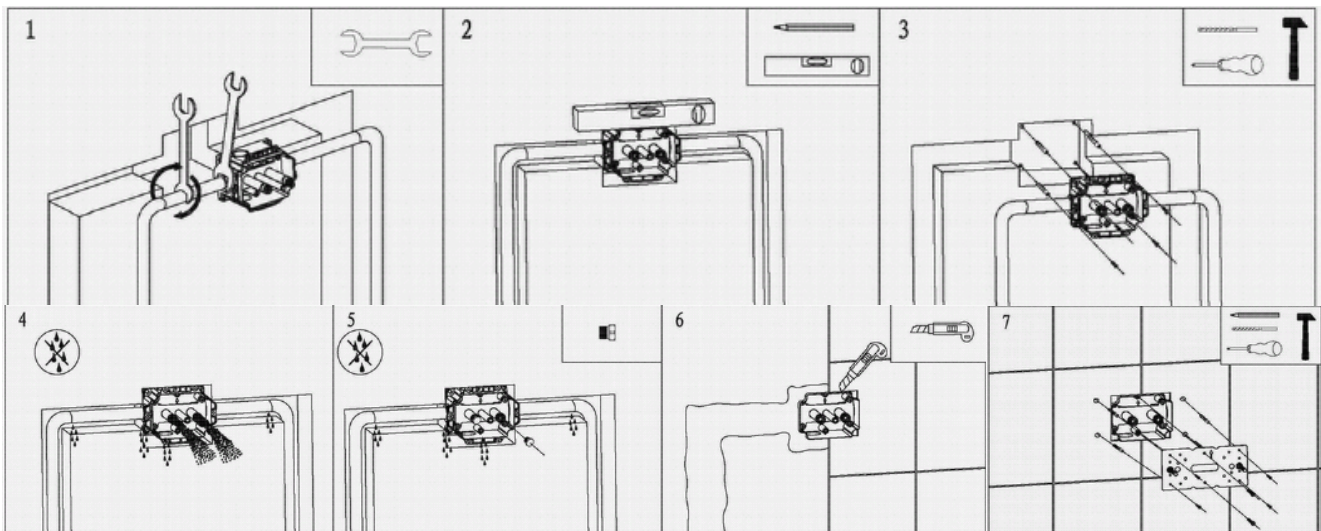
### Warning!

Please check for any hidden pipes or cables before drilling holes in the wall.  
When using power tools always follow the manufacturers user instructions.

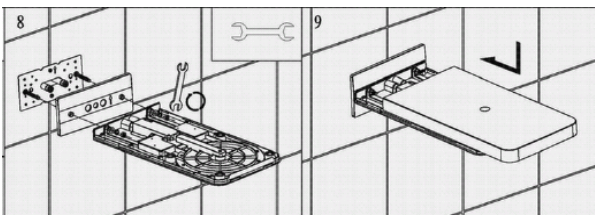
## TOOLS and equipment needed

Drill, 6mm Masonry drill bit, Philips screwdriver, Spirit level, Pencil, Spanner, Knife.

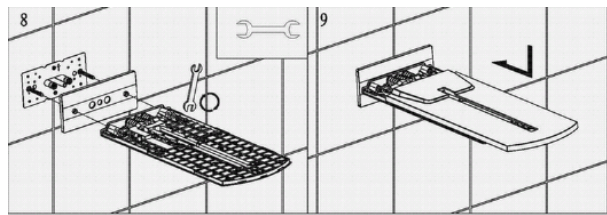
## INSTALLATION



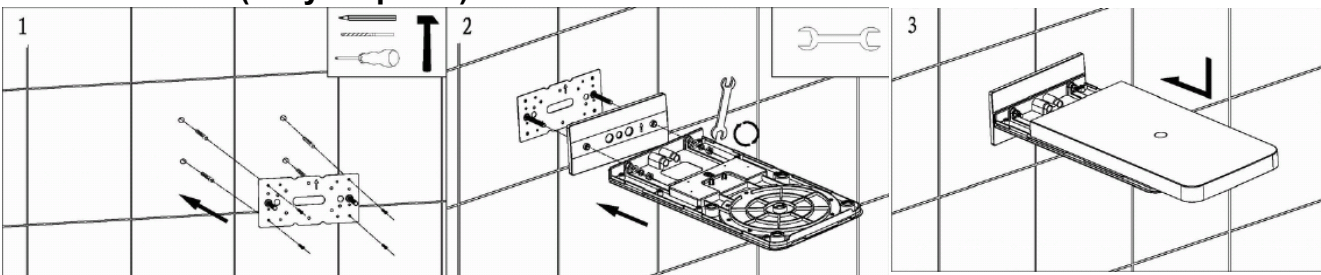
### For FH2000C



### For FH2000UC



### For FDIS2000C (Only step 1~3)



## CARE AND CLEANING

Do not use solvents or abrasive material or chemicals to clean the shower rail.

Only clean using soapy water and a soft cloth, rinse thoroughly afterwards.