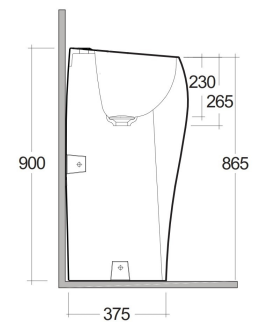
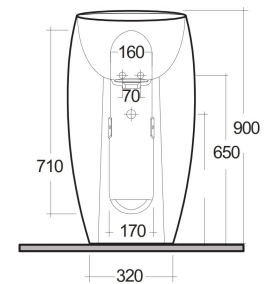
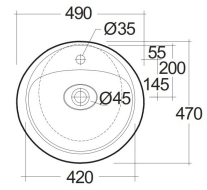


RAK-CLOUD - CLOFS5001AWHA

Wash basin | Free Standing

RAK
CERAMICS



TECHNICAL SPECIFICATIONS

Suite:	RAK-CLOUD
Type:	Free Standing
Dimensions:	495 x 470 mm
Weight:	49 Kg
Color:	Alpine White
Shape of basin:	Oval

Code	Name
CLOFS5001AWHA	RAK-CLOUD WASHBASIN ALPINE WHITE 50CM
CLOAC4400AWHA	RAK-CLOUD Ceramic Waste Cover (AWH)

Dimensions: All dimensions in mm. Tolerance of vitreous china & fireclay items: $\pm 5\%$ for below 200mm and $\pm 3\%$ for above 200mm; for all other items tolerance $\pm 1\%$. Note: Due to a continuing development program to improve design and performance, the manufacturer reserves all rights to vary specifications without prior information. Please note accessories are for photographic use only.