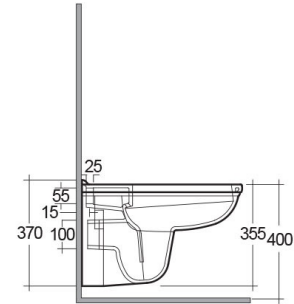
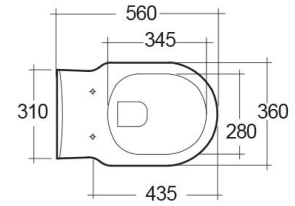


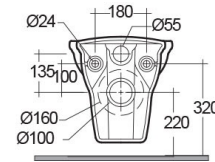
RAK-WASHINGTON
Wall Hung | Water Closet

RAK
 CERAMICS



TECHNICAL SPECIFICATIONS

Suite:	RAK-WASHINGTON
Type:	Wall Hung
Dimensions:	560 x 360 mm
Weight:	18 Kg
Color:	Alpine White, Ivory
Trap type:	P Trap
Trapway type:	Concealed
Seat cover options:	Urea
Bowl shape:	Oval
Soft close:	yes
Flush Type:	Dual Flush



Code	Name
WT20AWHA	WASHINGTON WATER CLOSET RIMLESS WALL HUNG 56CM
JM05DSCQRAWHA	RAK-Washington ABS Seat Cover
WTSC3901500	RAK-Washington Lacquered Polyester Seat Cover (500)
WTSC3901503	RAK-Washington Lacquered Polyester Seat Cover (503)

WTSC3901504	RAK-Washington Lacquered Polyester Seat Cover (504)
WTSC3901505	RAK-Washington Lacquered Polyester Seat Cover (505)
WTSC3901514	RAK-Washington Lacquered Polyester Seat Cover (514)
YFG173A	RAK-Compact Urea Soft Close Seat Cover

Dimensions: All dimensions in mm. Tolerance of vitreous china & fireclay items: $\pm 5\%$ for below 200mm and $\pm 3\%$ for above 200mm; for all other items tolerance $\pm 1\%$. Note: Due to a continuing development program to improve design and performance, the manufacturer reserves all rights to vary specifications without prior information. Please note accessories are for photographic use only.