

SPECIFICATION SHEET

COLLECTION:

PRODUCT CODE: DX-174251-CELSQ-CP



DESCRIPTION:

Celsius

- 2 outlet thermostatic shower valve
- Saturn 254mm round head with shower arm
- Zoo single function shower kit with integrated outlet and bracket

thermostatic cartridge V-001C-PLA

diverter cartridge FL-301-RTC

minimum operating pressure 1.0 bar MP

kit comprises:

CEL-1280/2-C/P

WG-SATURN2-SA

ZOO-SFMKWO

2 x 3/4" female inlets

2 x 3/4" female outlets

includes 3/4" - 1/2" adaptors

inc. bleed valve for system flush on installation

min-max wall mount 70-95mm

optimum installation depth 82mm

FINISH:

Chrome

MINIMUM OPERATING PRESSURE:

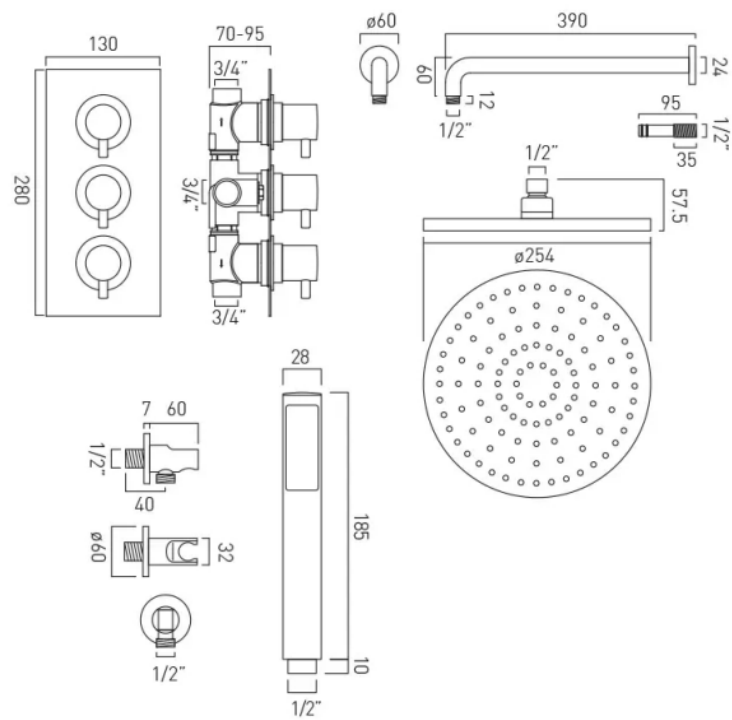
1.0 bar MP



TECHNICAL DRAWING

COLLECTION:

PRODUCT CODE: DX-174251-CELSQ-CP



SPECIFICATION SHEET

COLLECTION: CELSIUS

PRODUCT CODE: CEL-128D/2-C/P



DESCRIPTION:

DX Celsius
concealed 2 outlet, 3 handle thermostatic shower valve
wall mounted
with rectangular backplate
thermostatic cartridge V-001C-PLA
flow cartridge C-301-RTC
2 x 3/4" female inlets
2 x 3/4" female outlets
includes 3/4" - 1/2" adaptors
inc. bleed valve for system flush on installation
min-max wall mount 70-95mm
optimum installation depth 82mm
minimum operating pressure 0.2 bar LP (shower)
minimum operating pressure 1.0 bar MP (bath)

FINISH:

Chrome

FLOW REGULATOR:

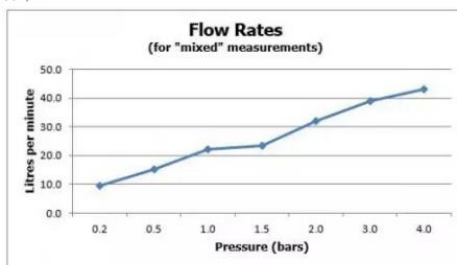
N

MINIMUM OPERATING PRESSURE:

0.2 bar LP (shower) 1.0 bar MP (bath)

FLOW RATE AT 3.0 BAR FLOW PRESSURE:

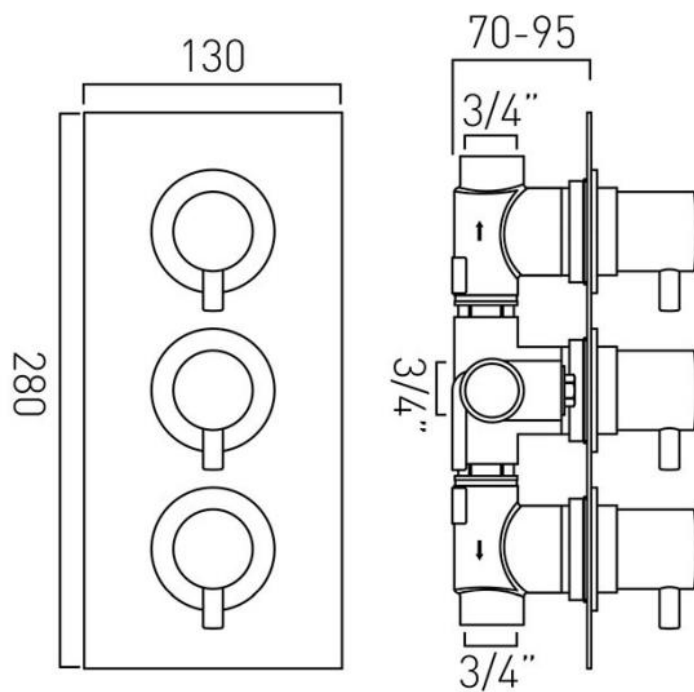
30 l/min



TECHNICAL DRAWING

COLLECTION: CELSIUS

PRODUCT CODE: CEL-128D/2-C/P



SPECIFICATION SHEET

COLLECTION:**PRODUCT CODE:** WG-SATURN2/SA-C/P**DESCRIPTION:**

Saturn
round single function shower head
with shower arm
wall mounted
254mm (10") diameter
minimum operating pressure 0.2 bar LP

FINISH:

Chrome

FLOW REGULATOR:

FR-SHOWER/9-C/P

MINIMUM OPERATING PRESSURE:

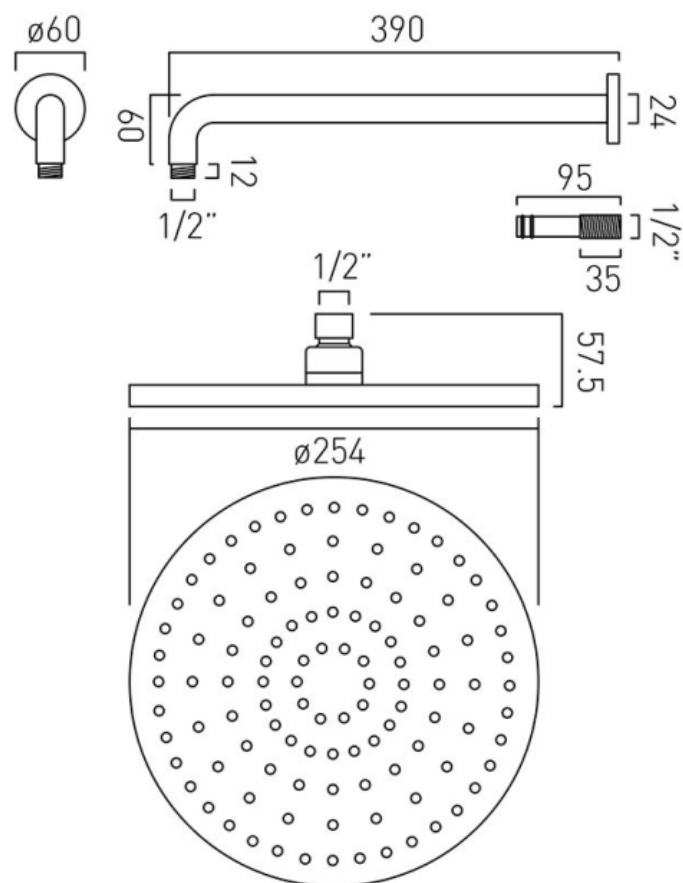
0.2 bar LP



TECHNICAL DRAWING

COLLECTION:

PRODUCT CODE: WG-SATURN2/SA-C/P



SPECIFICATION SHEET

COLLECTION: ZOO

PRODUCT CODE: ZOO-SFMKWO-C/P



DESCRIPTION:

Zoo
single function mini shower kit
wall mounted
with 150cm hose
and bracket with integrated outlet
1/2" inlet
minimum operating pressure 0.2 bar LP

FINISH:

Chrome

FLOW REGULATOR:

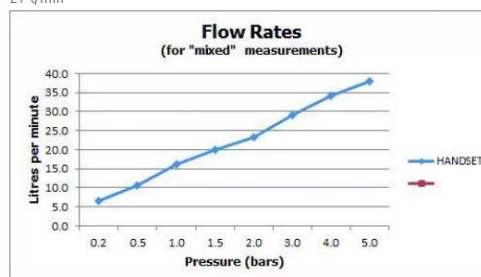
FR-SHOWER/9-C/P

MINIMUM OPERATING PRESSURE:

0.2 bar LP

FLOW RATE AT 3.0 BAR FLOW PRESSURE:

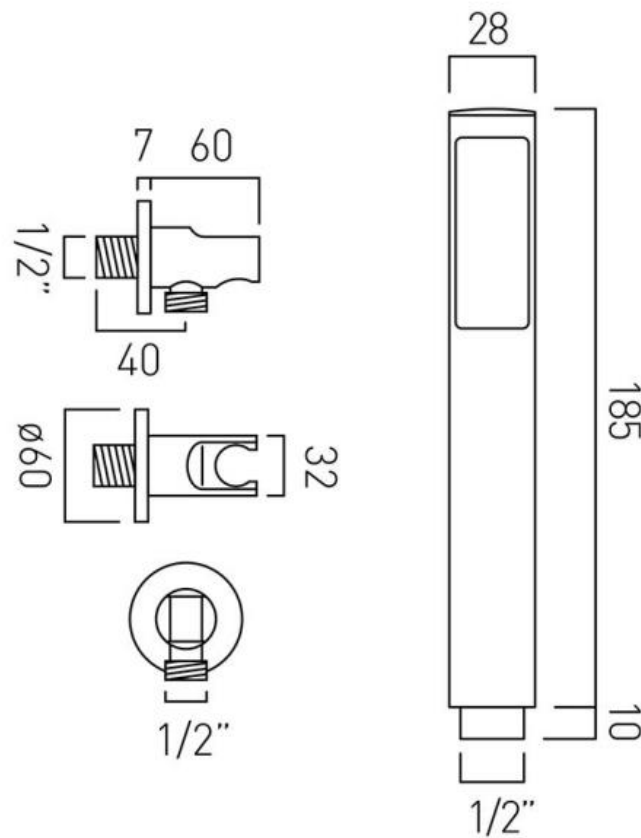
29 l/min



TECHNICAL DRAWING

COLLECTION: Z00

PRODUCT CODE: Z00-SFMKW0-C/P



tel: 01934 744466
email: sales@vado.com
www.vado.com

where inspiration flows
taps | showering | accessories

