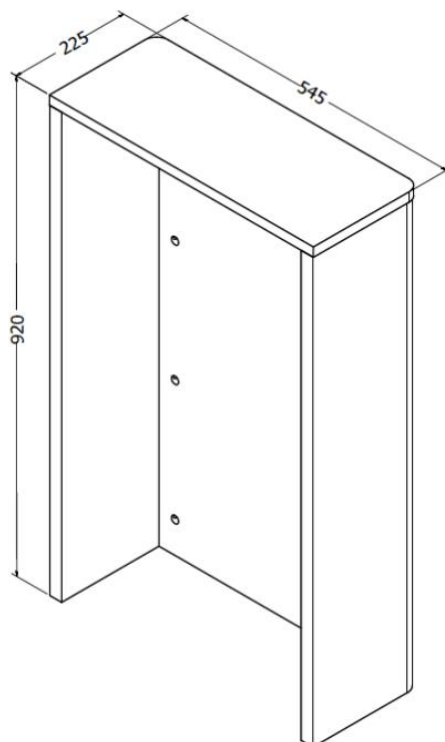


Measurements in millimetres mm
 Information updated July 2020
 Tel 0345 873 8840



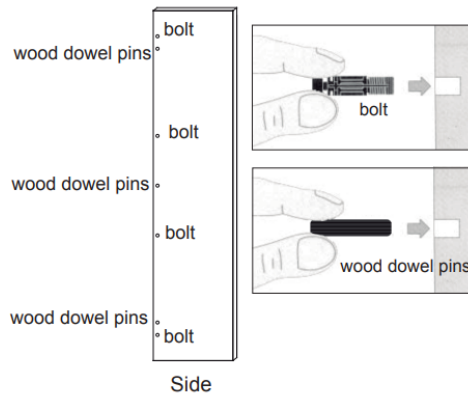
Code	Description	Finish	Weight Kgs
SP5492AW	Toilet Cistern Surround	AMERICAN WALNUT VENEER	6.00
SP5492BM	Toilet Cistern Surround	BLACK MATT	6.00
SP5492BS	Toilet Cistern Surround	BLUE SMOKE MATT	6.00
SP5492DW	Toilet Cistern Surround	DRIFTWOOD	6.00
SP5492GA	Toilet Cistern Surround	GREY ASH VENEER	6.00
SP5492PGM	Toilet Cistern Surround	PORTLAND GREY MATT	6.00
SP5492MO	Toilet Cistern Surround	MODERN OAK	6.00
SP5492SG	Toilet Cistern Surround	STORM GREY MATT	6.00
SP5492ST	Toilet Cistern Surround	STEEL	6.00
SP5492WG	Toilet Cistern Surround	WHITE GLOSS	6.00
SP5492WG+	Toilet Cistern Surround	PURE WHITE GLOSS	6.00
SP5492WO	Toilet Cistern Surround	WINDSOR OAK	6.00

Recommended use: Domestic, residential
Installation: Floor mounted
Materials: 18mm Melamine faced chipboard/MDF
Standards: EN 438-2
Compatible: For use with WCC33X31+, WCC47X46+ and WCF82X50+

WALDORF WC/ CISTERN SURROUND (WF5492XX)

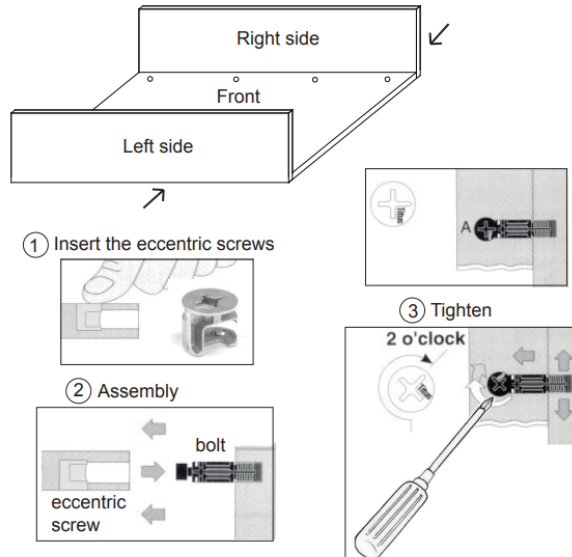
Step 1

Place the sides on a working table.
Insert the bolts and wood dowel pins
inside the holes.



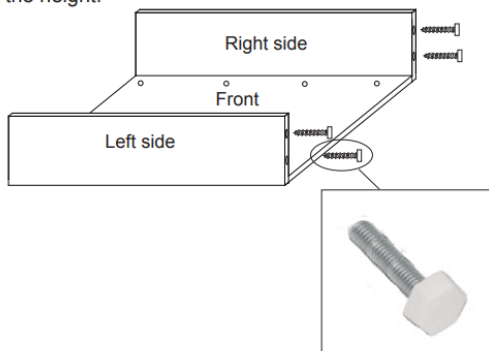
Step 2

Insert the eccentric screws in the front.
Place the right and left side next to the front.
Assemble the pieces and tighten the eccentric
screws using a screwdriver.



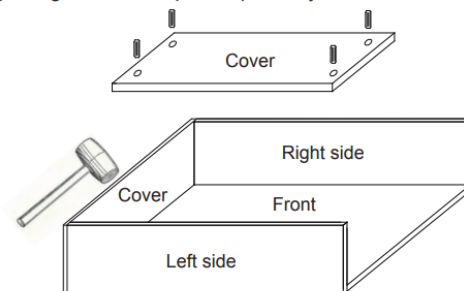
Step 3

Insert the adjustment screws in both sides to adjust
the height.



Step 4

Insert the wood dowel pins in the cover.
Assemble the cover with both sides by means of
the wood dowel pins and use a plastic hammer to
put together all the pieces perfectly.



Please read these instructions carefully before starting installation and keep in a safe place for future reference. ENSURE the room is well heated and ventilated.

Check the contents of the pack carefully before installation. Bauhaus will not be held responsible for any de-fit / re-fit costs where faulty product has been fitted.

If any fault is found with materials or workmanship, it must be reported immediately to the manufacturer. Remedial action will be taken, based on information received, on condition that: 1. Full details are supplied to the manufacturer; 2. The product has not been modified or tampered with; 3. The manufacturer is informed of any damage/shortages prior to installation. 4. The product has not been installed, or attempts have been made to install.

We do not accept responsibility for any problems that may occur through incorrect installation.