

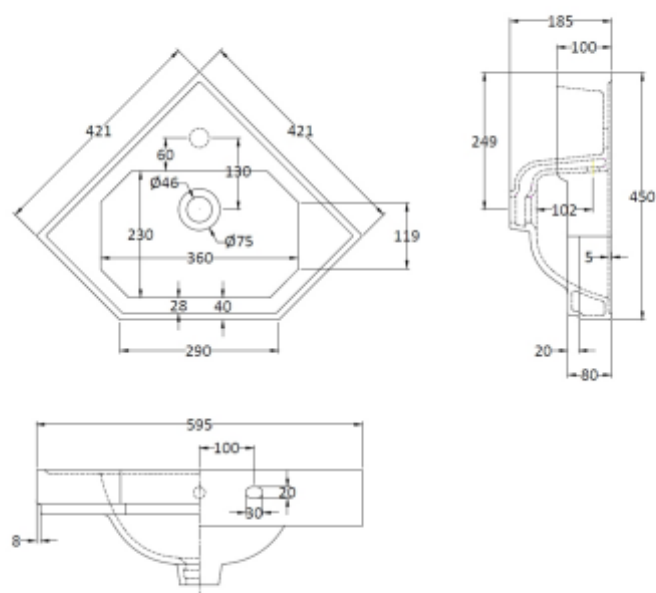
B A Y S W A T E R

London W.2

CODE: BAYC013

DESCRIPTION: Fitzroy Corner Basin

CATEGORY: Ceramics



PRODUCT DIMENSIONS

Height (mm)	Width (mm)	Depth (mm)	Nett Wgt Kg
185	593	450	9

PACKAGING DIMENSIONS

Height (mm)	Width (mm)	Depth (mm)	Gross Wgt Kg
210	400	440	9.5

PACKAGING DATA

Box Colour	White Cardboard Box		
Box Qty	1	Label Colour	Not Applicable
Label Size	100 x 50	Label Qty	0

OUTER BOX DIMENSIONS (If Applicable)

Height (mm)	Width (mm)	Depth (mm)	Gross Wgt Kg
Barcode		5055275892251	

PRODUCT DETAILS

Country of Origin	China		
Fitting Instruction	Yes	Colour	White

Certification	CE	N/A	WRAS	N/A	WRAS Number	N/A
Product Material	Vitreous China					

PANS/BIDETS

Trap Style	Not Applicable	Includes Seat	Not Applicable
------------	----------------	---------------	----------------

CISTERNS

Fittings	Not Applicable	Operating Type	Not Applicable
Lever Type	Not Applicable		

SEAT

Type	Not Applicable	Function	Not Applicable
Material	Not Applicable		
Hinge Type	Not Applicable	Hinge Material	Not Applicable

BASINS

Tap Hole	One Taphole	Chain Stay Hole	Yes
Template	Not Required	Waste Type Req'd	Slotted
Overflow Incl.	Yes	Overflow Cover	Yes
Inner Bowl Depth	140mm	Inner Bowl Width	360mm
Inner Bowl Height	140mm		

GENERAL

Fixing Supplied	No
-----------------	----

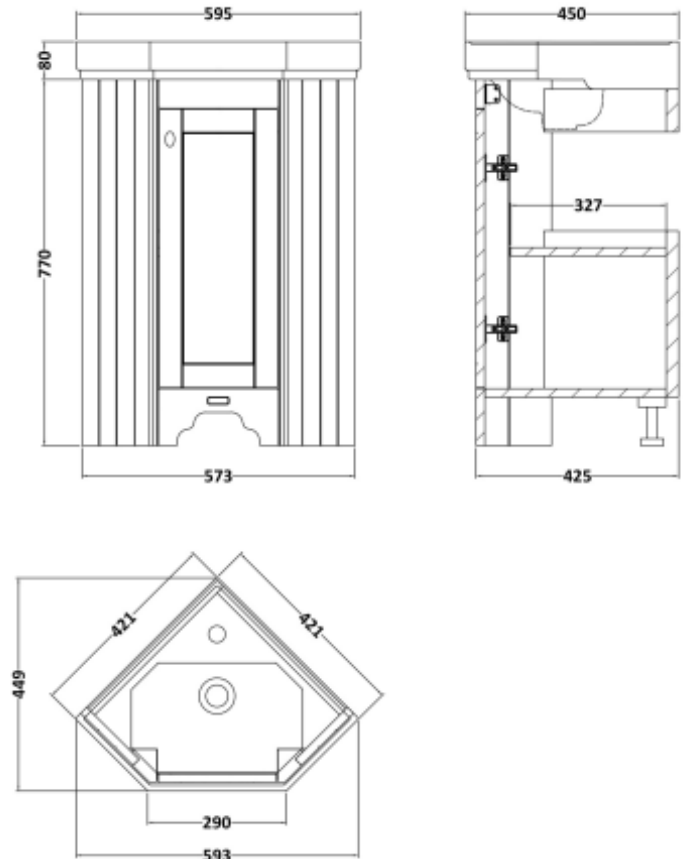
B A Y S W A T E R

London W.2

CODE: BAYF175

DESCRIPTION: Corner Basin Unit

CATEGORY: Furniture



PRODUCT DIMENSIONS

Height (mm)	Width (mm)	Depth (mm)	Nett Wgt Kg
770	573	425	17.2

PACKAGING DIMENSIONS

Height (mm)	Width (mm)	Depth (mm)	Gross Wgt Kg
800	436	436	17.7

PACKAGING DATA

Box Colour	White Cardboard Box		
Box Qty	1	Label Colour	White Label
Label Size	116 x 100	Label Qty	2

OUTER BOX DIMENSIONS (If Applicable)

Height (mm)	Width (mm)	Depth (mm)	Gross Wgt Kg
Barcode	5056211868941		

PRODUCT DETAILS

Country of Origin	Ukraine		Certification	FSC	Yes	CE	
Fitting Instruction	No		Colour	Plummett Grey			
Constr' Method	Cam & Wood Dowel		Constr' Type	Rigid			
Cabinet Finish	MFC Painted Matt		Fascia Finish	Mdf Painted Matt			
Cab Thickness (mm)	16		Fas Thickness (mm)	18			
Drawer Included	No		Drawer Type	Not Applicable			
No of Shelves	1		Hinge Type	95 Degree Inset Clip-On S/C			
Hinge Inc'	Yes		Adjustable Legs	Not Applicable			
Fixings Inc'	Not Required		Handle Style	Traditional			
Handle Inc'	Yes		Waste Shroud	No			
Handle Type	Knob						

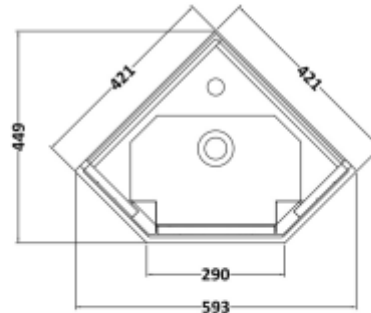
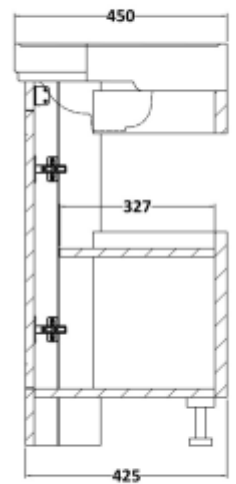
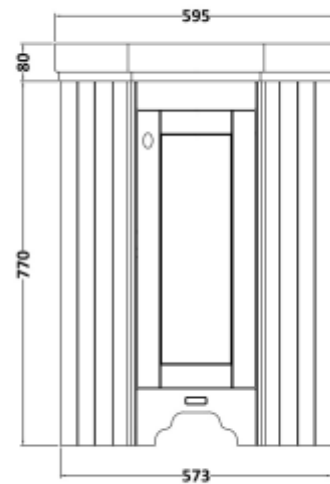
B A Y S W A T E R

London W.2

CODE: BAYF176

DESCRIPTION: Corner Basin Unit

CATEGORY: Furniture



PRODUCT DIMENSIONS

Height (mm)	Width (mm)	Depth (mm)	Nett Wgt Kg
770	573	425	17.2

PACKAGING DIMENSIONS

Height (mm)	Width (mm)	Depth (mm)	Gross Wgt Kg
800	436	436	17.7

PACKAGING DATA

Box Colour	White Cardboard Box		
Box Qty	1	Label Colour	White Label
Label Size	116 x 100	Label Qty	2

OUTER BOX DIMENSIONS (If Applicable)

Height (mm)	Width (mm)	Depth (mm)	Gross Wgt Kg
Barcode	5056211868958		

PRODUCT DETAILS

Country of Origin	Ukraine			
Fitting Instruction	No			
Constr' Method	Cam & Wood Dowel			
Cabinet Finish	MFC Painted Matt			
Cab Thickness (mm)	16			
Drawer Included	No			
No of Shelves	1			
Hinge Inc'	Yes			
Fixings Inc'	Not Required			
Handle Inc'	Yes			
Handle Type	Knob			
Certification	FSC	Yes	CE	
Colour	Stiffkey Blue			
Constr' Type	Rigid			
Fascia Finish	Mdf Painted Matt			
Fas Thickness (mm)	18			
Drawer Type	Not Applicable			
Hinge Type	95 Degree Inset Clip-On S/C			
Adjustable Legs	Not Applicable			
Handle Style	Traditional			
Waste Shroud	No			

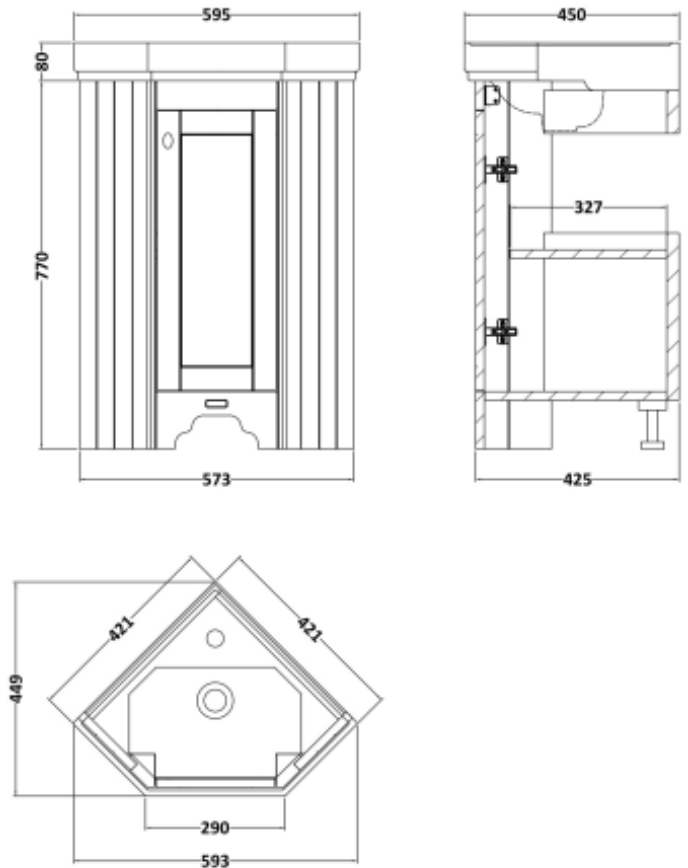
B A Y S W A T E R

London W.2

CODE: BAYF177

DESCRIPTION: Corner Basin Unit

CATEGORY: Furniture



PRODUCT DIMENSIONS

Height (mm)	Width (mm)	Depth (mm)	Nett Wgt Kg
770	573	425	17.2

PACKAGING DATA

Box Colour	White Cardboard Box		
Box Qty	1	Label Colour	White Label
Label Size	116 x 100	Label Qty	2

PACKAGING DIMENSIONS

Height (mm)	Width (mm)	Depth (mm)	Gross Wgt Kg
800	436	436	17.7

OUTER BOX DIMENSIONS (If Applicable)

Height (mm)	Width (mm)	Depth (mm)	Gross Wgt Kg
Barcode	5056211868965		

PRODUCT DETAILS

Country of Origin	Ukraine	Certification	FSC	Yes	CE
Fitting Instruction	No	Colour	Pointing White		
Constr' Method	Cam & Wood Dowel	Constr' Type	Rigid		
Cabinet Finish	MFC Painted Matt	Fascia Finish	Mdf Painted Matt		
Cab Thickness (mm)	16	Fas Thickness (mm)	18		
Drawer Included	No	Drawer Type	Not Applicable		
No of Shelves	1	Hinge Type	95 Degree Inset Clip-On S/C		
Hinge Inc'	Yes	Adjustable Legs	Not Applicable		
Fixings Inc'	Not Required	Handle Style	Traditional		
Handle Inc'	Yes	Waste Shroud	No		
Handle Type	Knob				

CODE: BAYF475

